



# BARTON OAKS PLAZA II

901 S Mopac Expressway - 78746



## Available Space

Suite	RSF
120	1,465
350	4,091
360	4,582
565*	1,668

*\*Available September 2022*

## Building Features



Class A Office



Downtown and  
Greenbelt Views



Various Restaurants  
and Food Trucks



On-site Management  
Office



Food Delivery Provided  
by **fooda**



Structured Parking  
Garage



Nearby Hike and  
Bike Trails



Located at MoPac and  
Bee Caves Intersection



LEED Gold Certified

**RICHARD PADDOCK**  
(512) 538-0057  
[paddock@hpitx.com](mailto:paddock@hpitx.com)

**J.D. LEWIS**  
(512) 538-0064  
[jdlewis@hpitx.com](mailto:jdlewis@hpitx.com)

No warranty or representation, expressed or implied, is made as to the accuracy of the information contained herein, and same is submitted subject to errors, omissions, change of price, rental or other conditions, withdrawal without notice, and to any special listing conditions imposed by the principals.



# BARTON OAKS PLAZA II

1st Floor - Floor Plan

**SUITE 120**

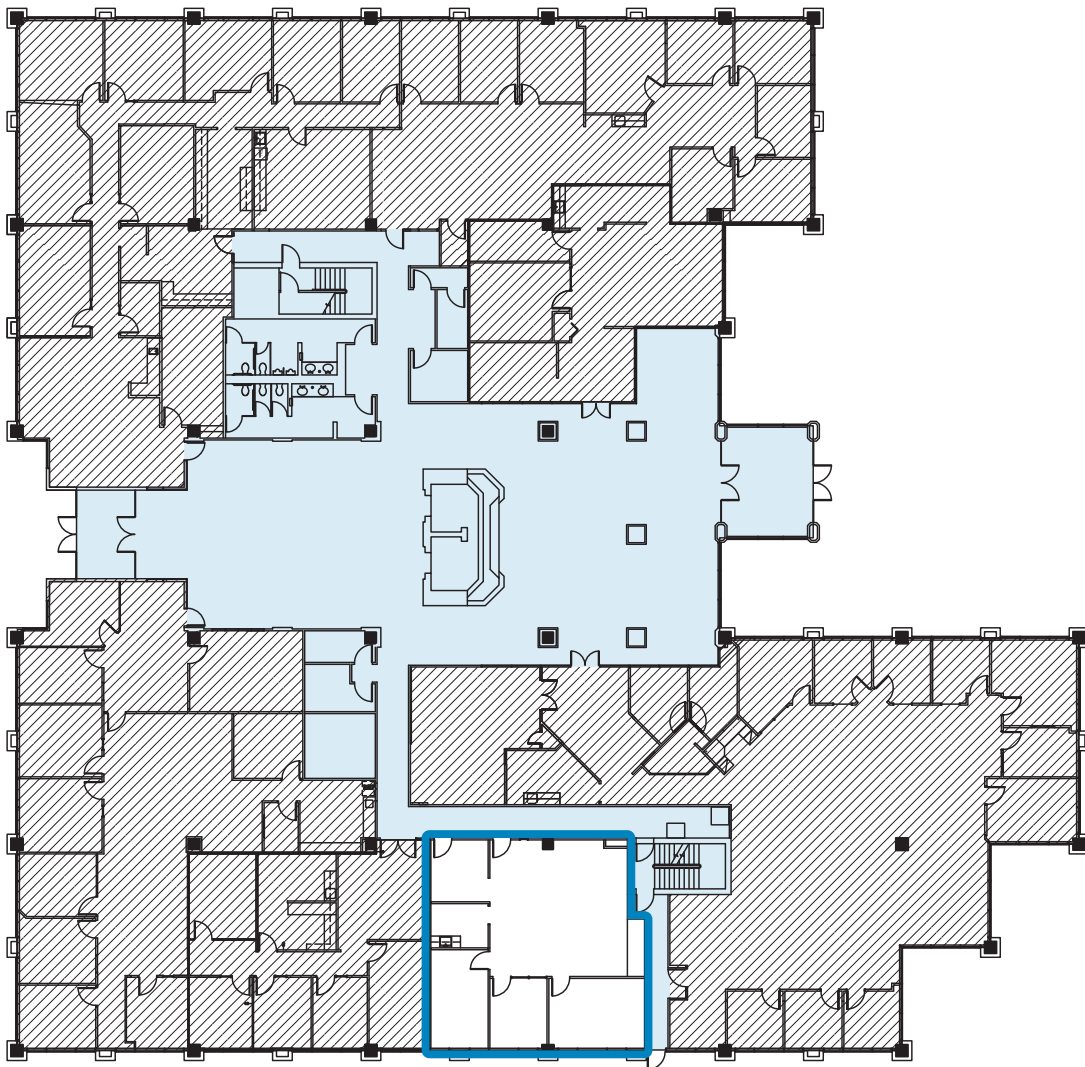
AVAILABLE NOW

**1,465 SF**

AVAILABLE SF

**STANDARD OFFICE**

SPACE TYPE



**RICHARD PADDOCK**  
(512) 538-0057  
[paddock@hpitx.com](mailto:paddock@hpitx.com)

**J.D. LEWIS**  
(512) 538-0064  
[jdlewis@hpitx.com](mailto:jdlewis@hpitx.com)

No warranty or representation, expressed or implied, is made as to the accuracy of the information contained herein, and same is submitted subject to errors, omissions, change of price, rental or other conditions, withdrawal without notice, and to any special listing conditions imposed by the principals.



# BARTON OAKS PLAZA II

3rd Floor - Floor Plan

**SUITE 350**

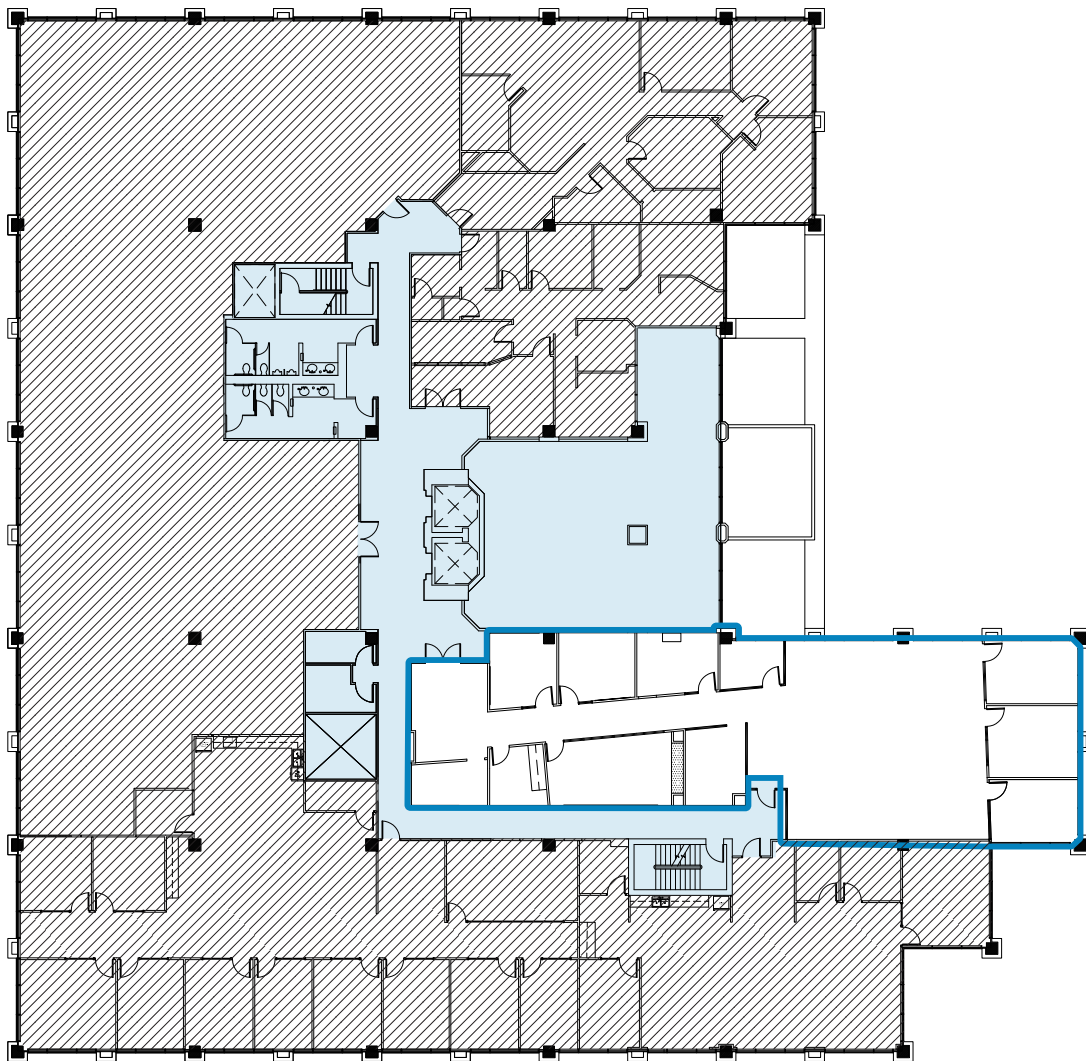
AVAILABLE NOW

**4,091 SF**

AVAILABLE SF

**STANDARD OFFICE**

SPACE TYPE



**RICHARD PADDOCK**  
(512) 538-0057  
[paddock@hpitx.com](mailto:paddock@hpitx.com)

**J.D. LEWIS**  
(512) 538-0064  
[jdlewis@hpitx.com](mailto:jdlewis@hpitx.com)

No warranty or representation, expressed or implied, is made as to the accuracy of the information contained herein, and same is submitted subject to errors, omissions, change of price, rental or other conditions, withdrawal without notice, and to any special listing conditions imposed by the principals.



# BARTON OAKS PLAZA II

3rd Floor - Floor Plan

**SUITE 360**

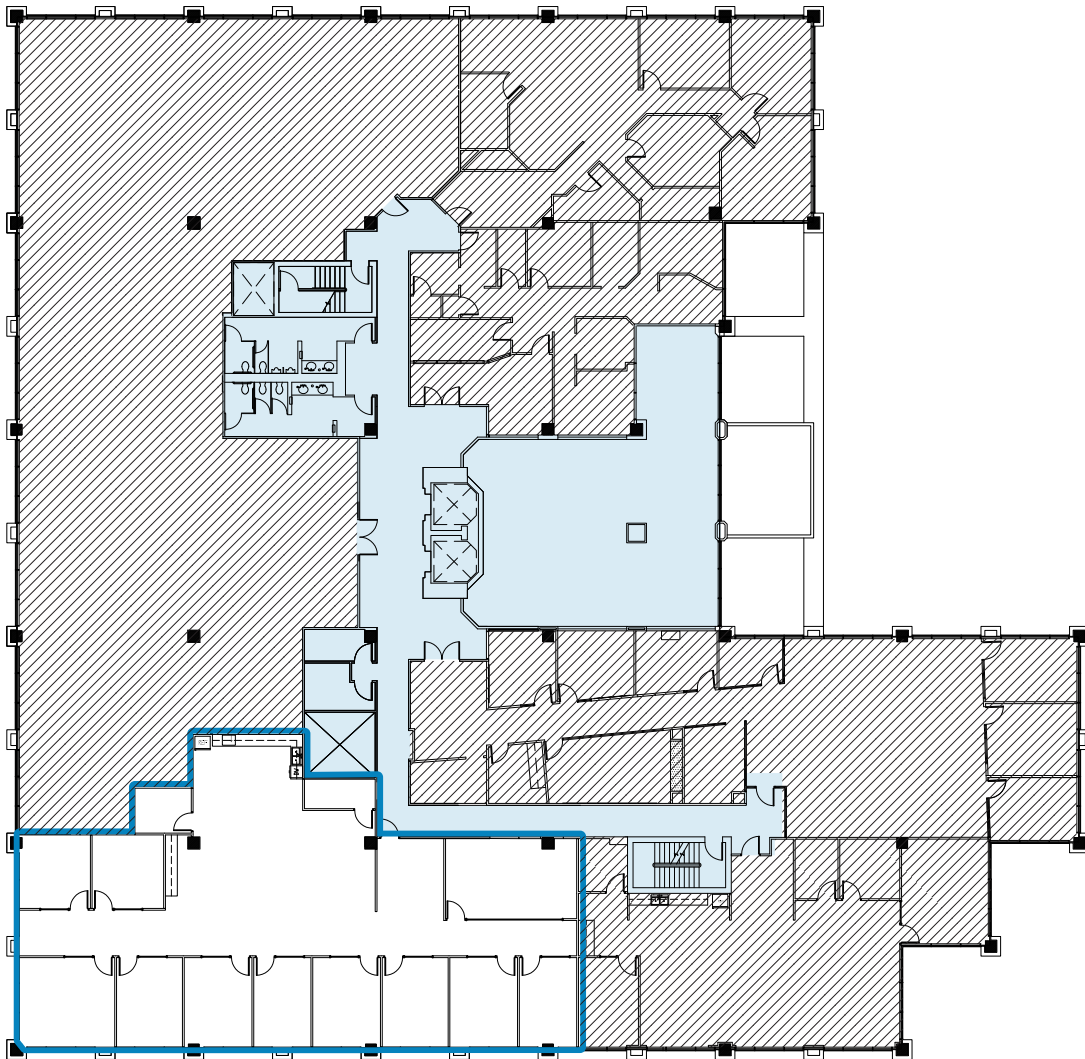
AVAILABLE NOW

**4,582 SF**

AVAILABLE SF

**STANDARD OFFICE**

SPACE TYPE



**RICHARD PADDOCK**  
(512) 538-0057  
[paddock@hpitx.com](mailto:paddock@hpitx.com)

**J.D. LEWIS**  
(512) 538-0064  
[jdlewis@hpitx.com](mailto:jdlewis@hpitx.com)

No warranty or representation, expressed or implied, is made as to the accuracy of the information contained herein, and same is submitted subject to errors, omissions, change of price, rental or other conditions, withdrawal without notice, and to any special listing conditions imposed by the principals.



# BARTON OAKS PLAZA II

5th Floor - Floor Plan

**SUITE 565**

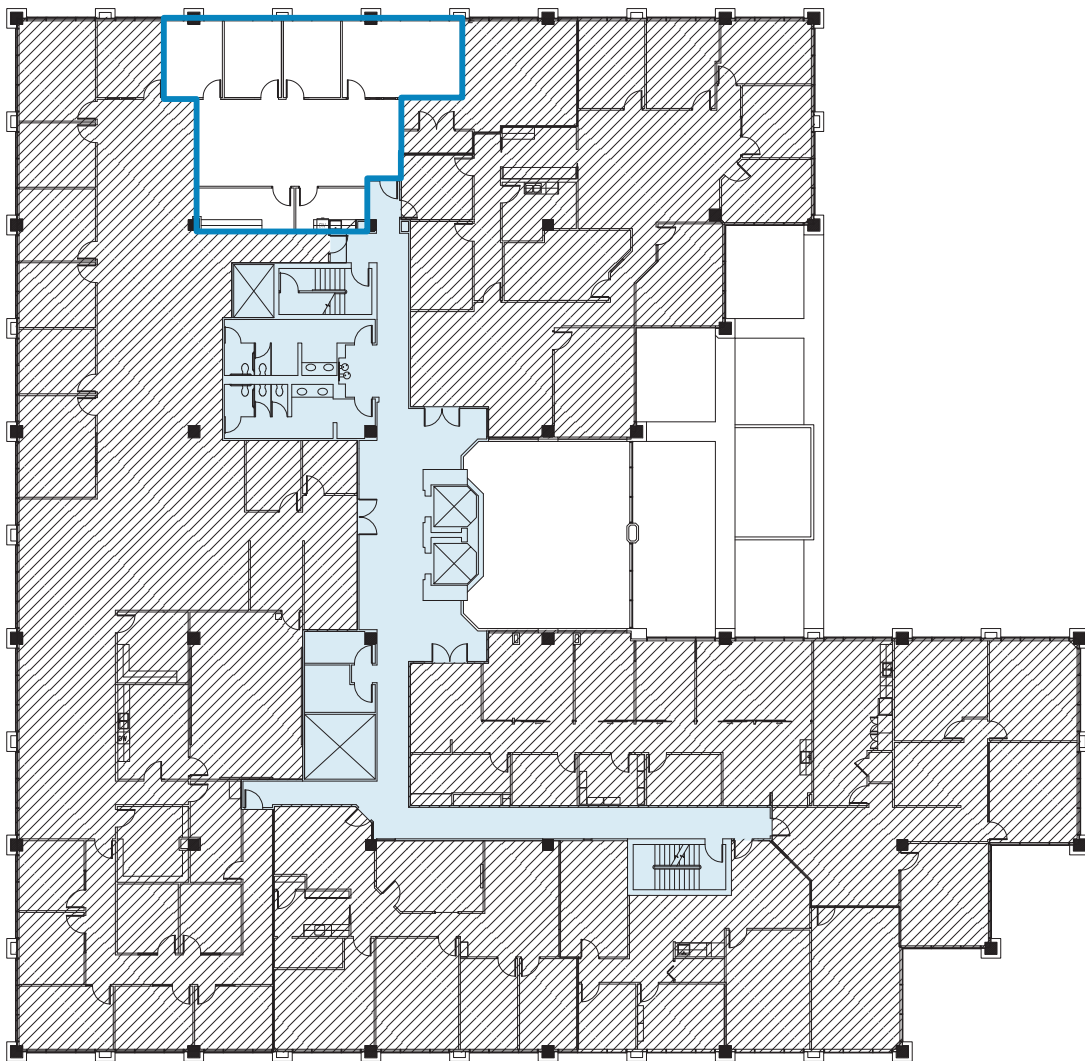
AVAILABLE SEPT. 2022

**1,668 SF**

AVAILABLE SF

**STANDARD OFFICE**

SPACE TYPE



**RICHARD PADDOCK**  
(512) 538-0057  
[paddock@hpitx.com](mailto:paddock@hpitx.com)

**J.D. LEWIS**  
(512) 538-0064  
[jdlewis@hpitx.com](mailto:jdlewis@hpitx.com)

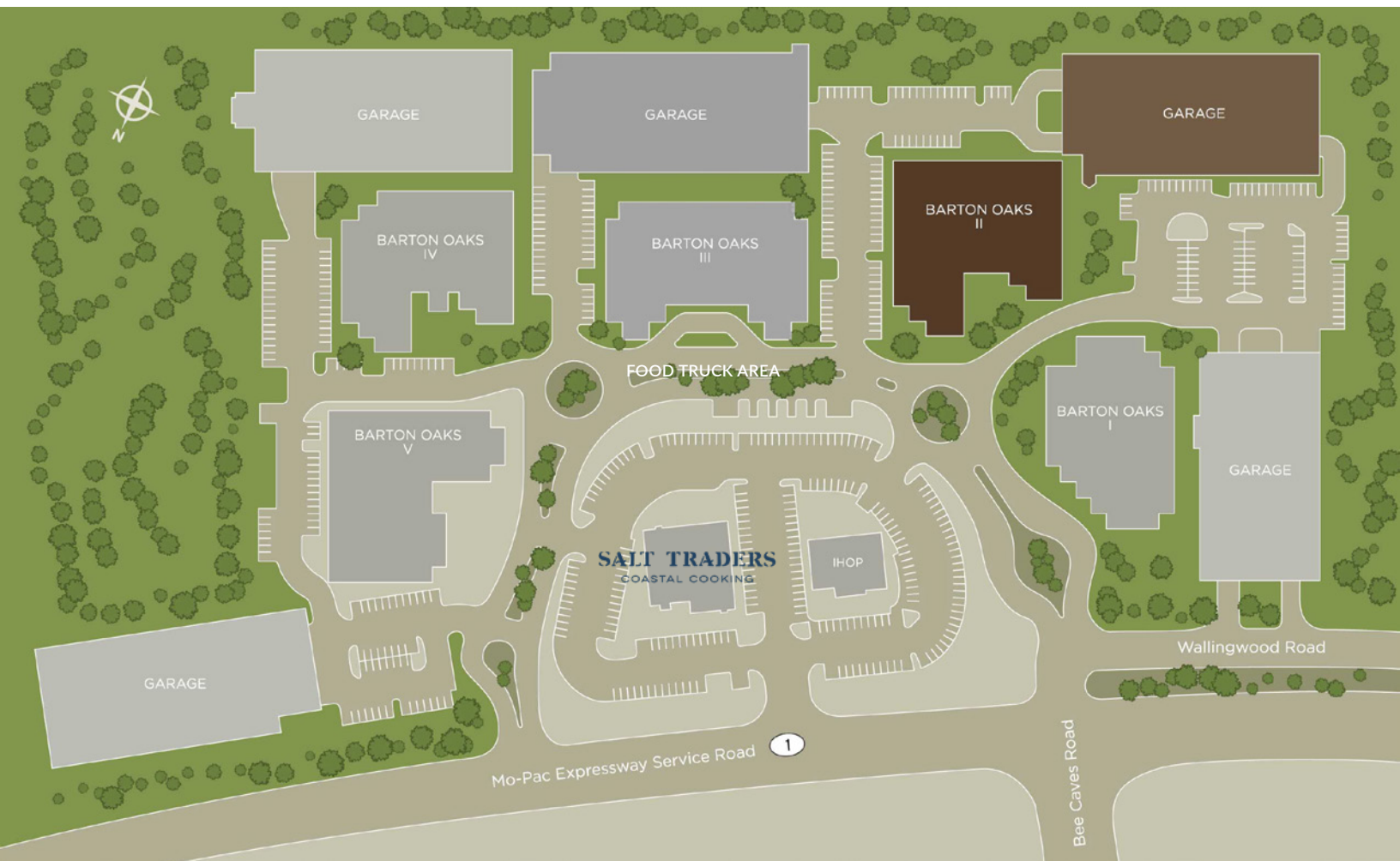
No warranty or representation, expressed or implied, is made as to the accuracy of the information contained herein, and same is submitted subject to errors, omissions, change of price, rental or other conditions, withdrawal without notice, and to any special listing conditions imposed by the principals.





# BARTON OAKS PLAZA

## Site Plan



**RICHARD PADDOCK**  
(512) 538-0057  
[paddock@hpitx.com](mailto:paddock@hpitx.com)

**J.D. LEWIS**  
(512) 538-0064  
[jdlewis@hpitx.com](mailto:jdlewis@hpitx.com)

No warranty or representation, expressed or implied, is made as to the accuracy of the information contained herein, and same is submitted subject to errors, omissions, change of price, rental or other conditions, withdrawal without notice, and to any special listing conditions imposed by the principals.