

# AVAILABLE



**338 NASSAU STREET  
PRINCETON NJ**

**CORNER OF NASSAU &  
HARRISON STREETS**

- **4,000 +/- SF OFFICE**
- Parking for 13 spaces
- **Two (2) One Bedroom Apartments**
- Private Outside decks
- Remote Control Gas Fireplaces in some offices & both apartments
- **Live/Work Possibilities**

Convenient to local business  
& bus services

**High Visibility**

Exciting New Restoration &  
Multifunction Development



**KING REALTY GROUP**

342 Nassau Street  
Princeton, NJ 08540  
Ph 609.921.1331

**VICTOR B. MURRAY**  
Mobile: 609.658.0851

**VICTOR.B.MURRAY@GMAIL.COM**



King Realty



King Construction

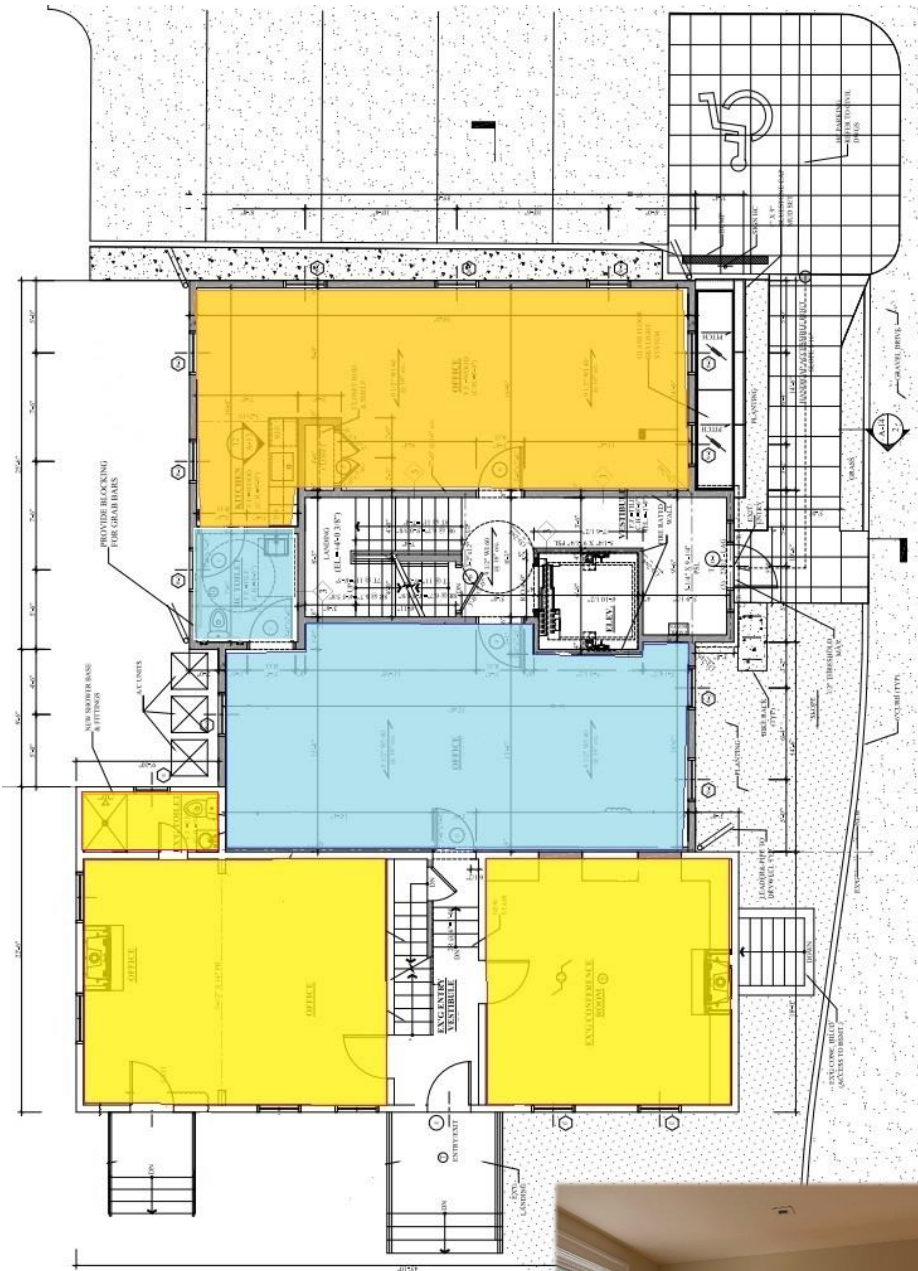


King Management



King Investments

## 13 ON SITE PARKING SPACES



1<sup>st</sup> FLOOR TENANT SUITES PLAN



*Warm & inviting / daylight offices*



King Realty



King Construction



King Management



King Investments

## 338 NASSAU STREET

6,000 SQ FT

338 Nassau Street is the former HQ of Princeton-famed architect, **Michael Graves**.

Totally renovated and expanded frame building contain **4,000 +/- Square Feet** of office suites.

The building has gone through major expansions and renovations.

All **three floors** accessible via oak stairwell and new interior elevator.

The building offers **emergency power** and is serviced by **public water and sewer** and has 400-amp at 208-volt three phase service. There are **independent HVAC units** & are **separately metered**.