

FOR LEASE
222 Old Bridge Street

East Syracuse, New York 13057


PRIME RETAIL/OFFICE EASTERN SUBURBS

7,000± SF Office/Retail Building

Property Highlights

- Zoned General Commercial
- Located across from BJ's Wholesale, Staples and Dunkin'; Walmart Supercenter close by
- Minutes from Downtown and convenient to Bridge Street, Route 290, I-690, I-481, I-81 and I-90 (NYS Thruway)
- Five (5) miles from Hancock International Airport
- Prime retail/office location with great exposure
- Large open areas with perimeter offices
- Great parking
- Ready to occupy
- Endless design opportunities and upgrades for exterior façade

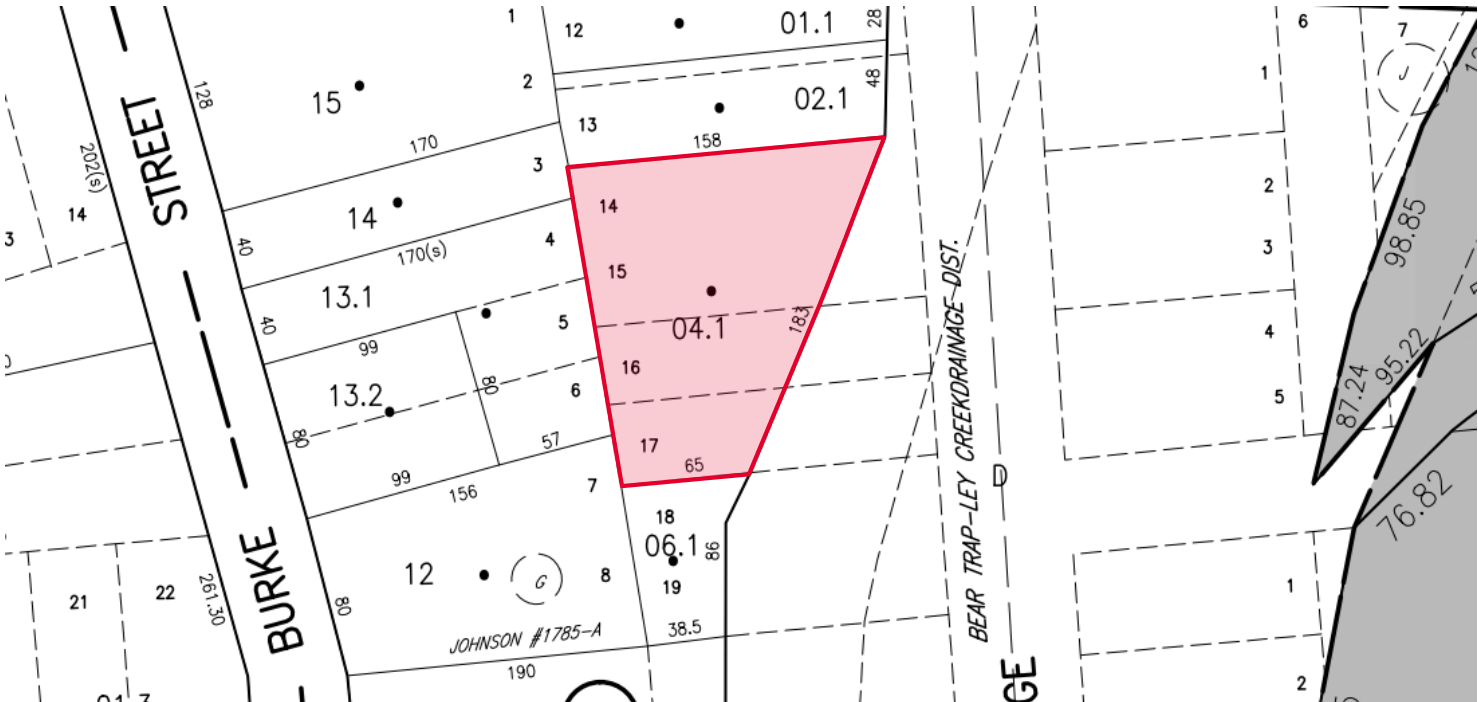
Demographic	1 Mile	3 Miles	5 Miles
Population	4,850	57,520	159,104
Households	2,292	24,686	63,862
Average Income	\$61,778	\$76,447	\$66,202
Daytime Employees	5,746	49,264	161,526
Source: ESRI Business Analyst 2016			

Traffic Counts	
Bridge Street	31,650 AADT
Route 290	13,526 AADAT
Source: NYS DOT 2016	

For more information, please contact:

Michael Bovalino
Real Estate Salesperson
 +1 315.445.8512
 mbovalino@pyramidbrokerage.com

5786 Widewaters Pkwy, P.O. Box 3
 Syracuse, New York 13214
 phone: +1 315 445 1030
 pyramidbrokerage.com





FOR LEASE

222 Old Bridge Street

East Syracuse, New York 13057





FOR LEASE

222 Old Bridge Street

East Syracuse, New York 13057

