

14635 E. JEFFERSON AVENUE  
1021 MANISTIQUE STREET  
DETROIT, MICHIGAN

FORMER CHURCH & PARISH HALL  
36,520 Square Feet For Sale



**SIGNATURE  
ASSOCIATES**  
KNOW SIGNATURE | KNOW RESULTS

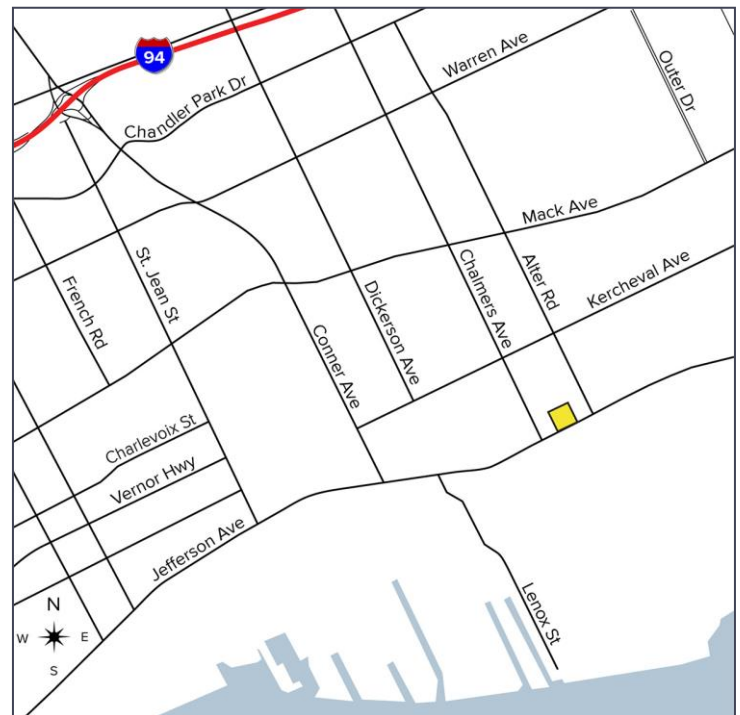
**EXCITING OPPORTUNITY!**



## PROPERTY FEATURES

- 36,520 square feet total for sale
- Additional lots:
  - 1089 Manistique St. (Parcel 21061708)
  - 1095 Manistique St. (Parcel 21061707)
  - 1099 Manistique St. (Parcel 21061706)
  - 1105 Manistique St. (Parcel 21061705)
  - 1111 Manistique St. (Parcel 21061704)
- Zoned B4, R2
- Recent capital improvements
- Located in the Historic Jefferson-Chalmers Corridor
- Ample parking
- Sale Price: \$1,500,000 (\$41.07/sq.ft.)

**Comments:** 14635 E. Jefferson Avenue: 21,800 sq. ft. fellowship hall, 3-story building with offices. 1021 Manistique Street: 14,720 sq. ft. church with seating for 275, choir loft, baptismal, stained glass windows, and new boiler.



For more information, please contact:

**CHRIS MONSOUR**  
(248) 948 0107  
cmonsour@signatureassociates.com

**SIGNATURE ASSOCIATES**  
One Towne Square, Suite 1200  
Southfield, MI 48076  
www.signatureassociates.com

# 14635 E. Jefferson Ave. & 1021 Manistique St. – Detroit, MI

## Former Church & Parish Hall For Sale

36,520  
Square Feet  
AVAILABLE



For more information, please contact:

**CHRIS MONSOUR**

(248) 948 0107

[cmonsour@signatureassociates.com](mailto:cmonsour@signatureassociates.com)

**SIGNATURE ASSOCIATES**

One Towne Square, Suite 1200

Southfield, MI 48076

[www.signatureassociates.com](http://www.signatureassociates.com)

# 14635 E. Jefferson Ave. & 1021 Manistique St. – Detroit, MI

Former Church & Parish Hall For Sale

36,520  
Square Feet  
AVAILABLE



For more information, please contact:

**CHRIS MONSOUR**  
(248) 948 0107  
cmonsour@signatureassociates.com

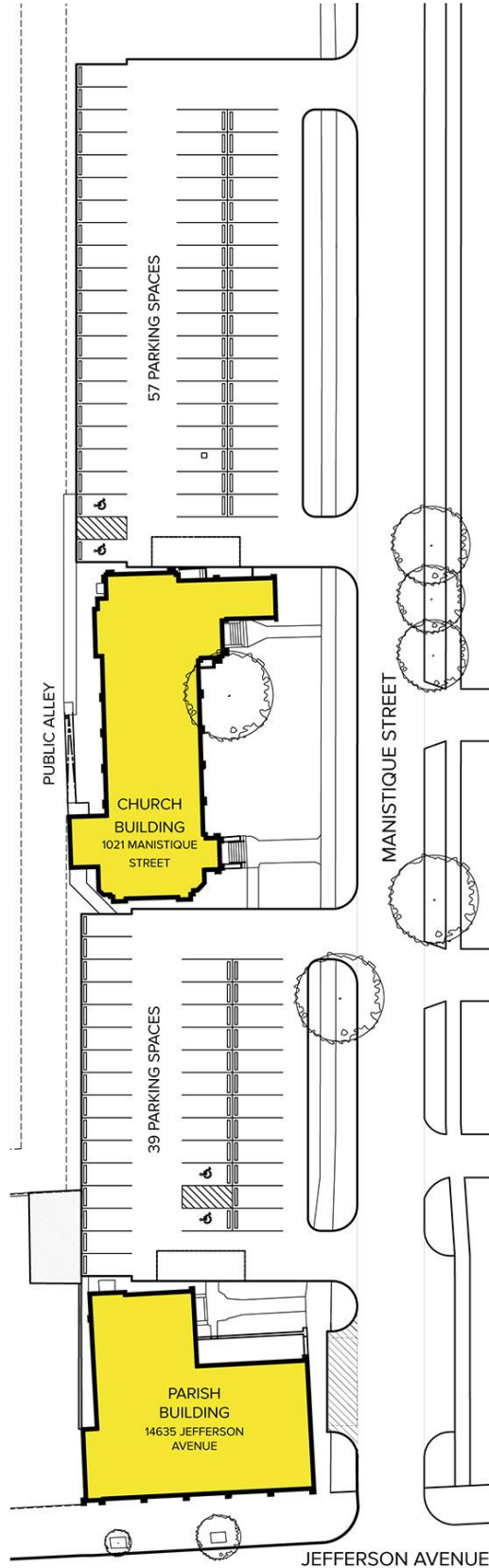
**SIGNATURE ASSOCIATES**  
One Towne Square, Suite 1200  
Southfield, MI 48076  
www.signatureassociates.com

# 14635 E. Jefferson Ave. & 1021 Manistique St. – Detroit, MI

## Former Church & Parish Hall For Sale

36,520  
Square Feet  
AVAILABLE

### Site Plan



For more information, please contact:

**CHRIS MONSOUR**  
(248) 948 0107  
cmonsour@signatureassociates.com

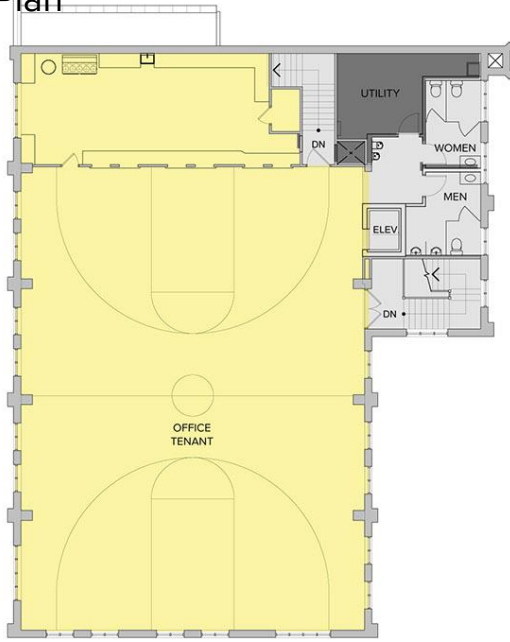
**SIGNATURE ASSOCIATES**  
One Towne Square, Suite 1200  
Southfield, MI 48076  
www.signatureassociates.com

# 14635 E. Jefferson Ave. & 1021 Manistique St. – Detroit, MI

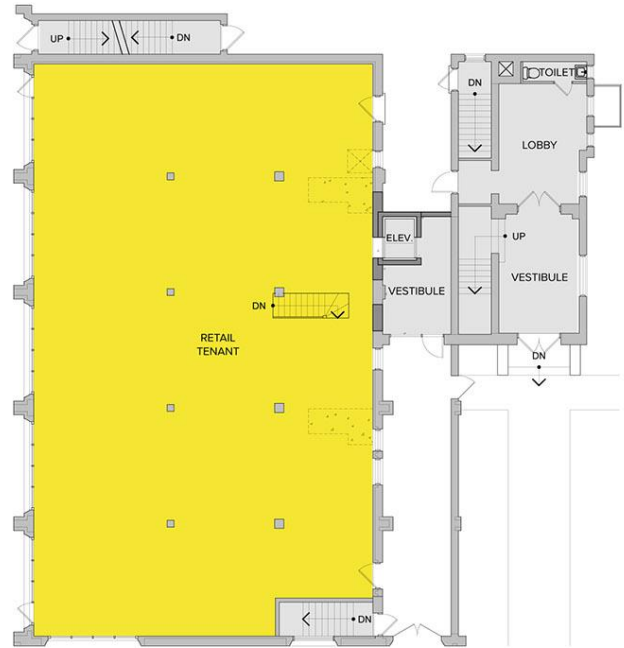
## Former Church & Parish Hall For Sale

36,520  
Square Feet  
AVAILABLE

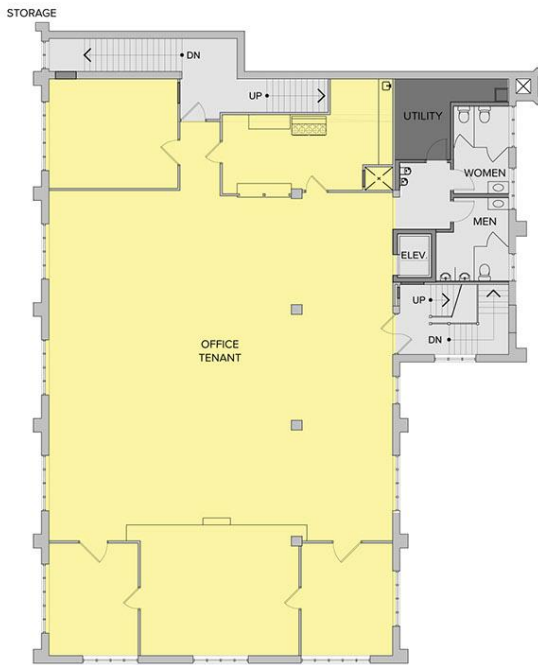
### 14635 E. Jefferson Ave. Proposed Floor Plan



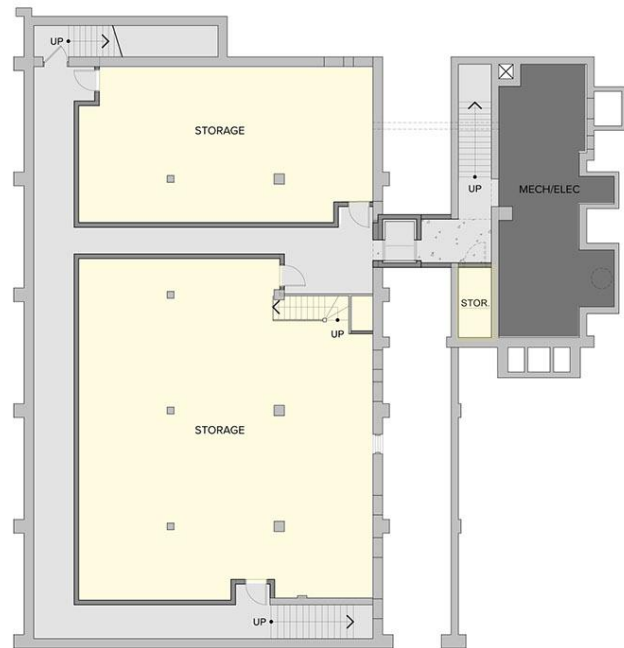
PARISH THIRD FLOOR PLAN



PARISH FIRST FLOOR PLAN



PARISH SECOND FLOOR PLAN



PARISH BASEMENT FLOOR PLAN



For more information, please contact:

**CHRIS MONSOUR**  
(248) 948 0107  
cmonsour@signatureassociates.com

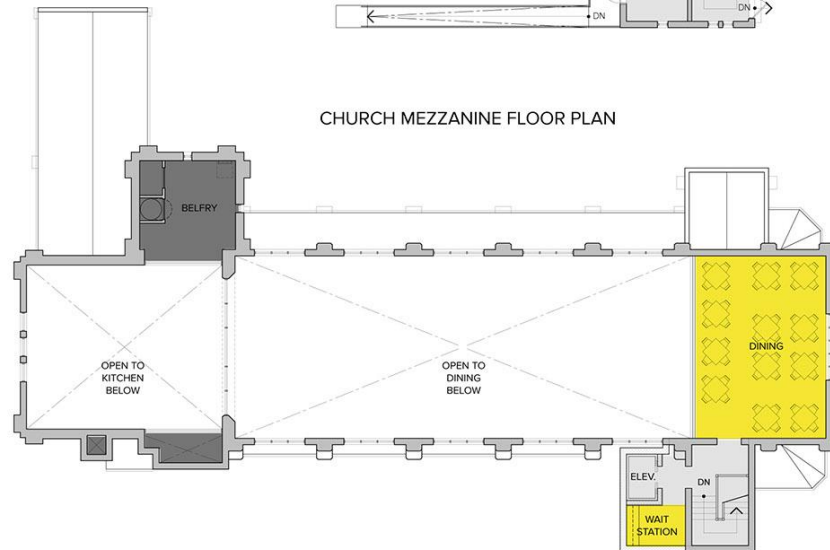
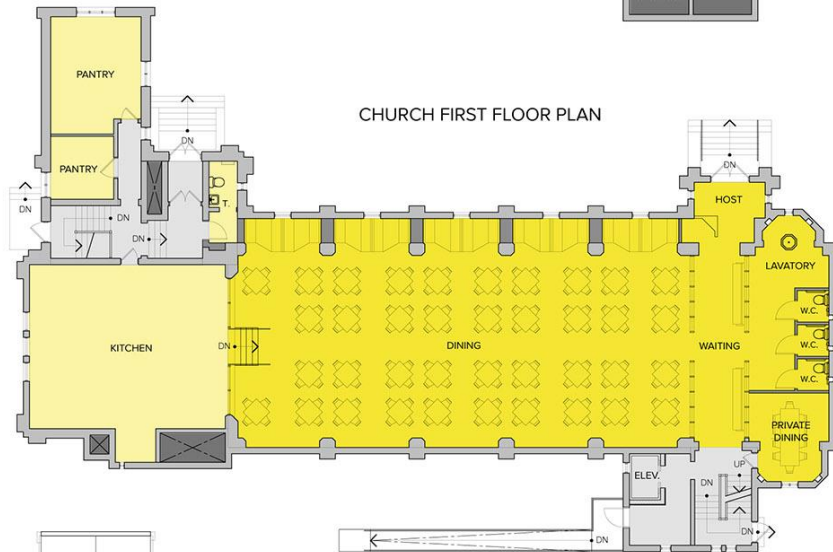
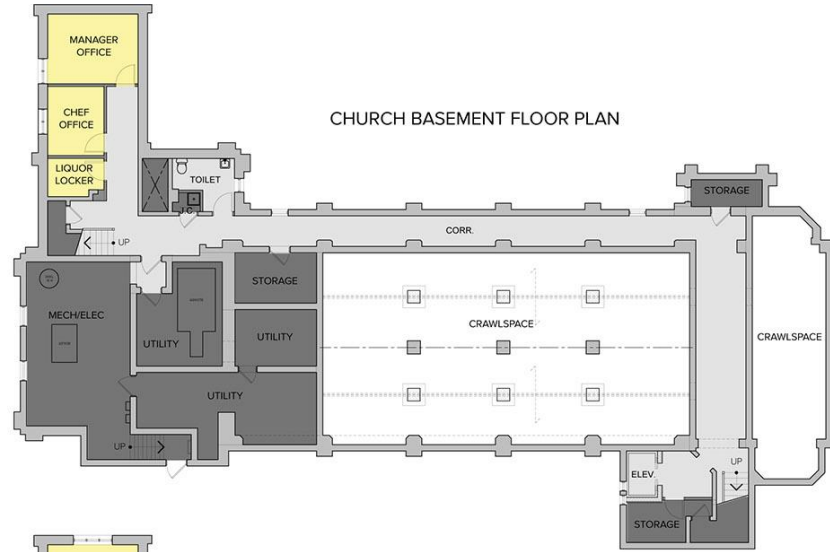
**SIGNATURE ASSOCIATES**  
One Towne Square, Suite 1200  
Southfield, MI 48076  
www.signatureassociates.com

# 14635 E. Jefferson Ave. & 1021 Manistique St. – Detroit, MI

## Former Church & Parish Hall For Sale

36,520  
Square Feet  
AVAILABLE

### 1021 Manistique St. Proposed Floor Plan



For more information, please contact:

**CHRIS MONSOUR**  
(248) 948 0107  
cmonsour@signatureassociates.com

**SIGNATURE ASSOCIATES**  
One Towne Square, Suite 1200  
Southfield, MI 48076  
www.signatureassociates.com

# 14635 E. Jefferson Ave. & 1021 Manistique St. – Detroit, MI

Former Church & Parish Hall For Sale

36,520  
Square Feet  
AVAILABLE

## DEMOGRAPHICS

	POPULATION	MED. HH INCOME
1 MILE	14,916	\$68,339
3 MILE	80,466	\$62,326
5 MILE	191,784	\$54,753

## TRAFFIC COUNTS (TWO-WAY)

15,697	Jefferson Ave. & Lakepointe
22,035	Jefferson Ave. & Eastlawn St.



For more information, please contact:

**CHRIS MONSOUR**  
(248) 948 0107  
cmonsour@signatureassociates.com

**SIGNATURE ASSOCIATES**  
One Towne Square, Suite 1200  
Southfield, MI 48076  
www.signatureassociates.com