

51231 CHESTERFIELD ROAD
CHESTERFIELD TWP., MICHIGAN

VACANT LAND FOR SALE
8.84 Acres Available



**SIGNATURE
ASSOCIATES**
KNOW SIGNATURE | KNOW RESULTS



PROPERTY FEATURES

- 8.84 acres available
- Zoned M2
- All utilities at site
- This area has strong retail gravity, high traffic, and good residential density
- Excellent opportunity for small, mid-sized and big box retailers, Company Headquarters, church and many other uses
- Possible multi-family development
- Close access to I-94 with excellent visibility
- Sale Price: \$825,000 (\$93,325.79/acre)



For more information, please contact:

CHRIS MONSOUR

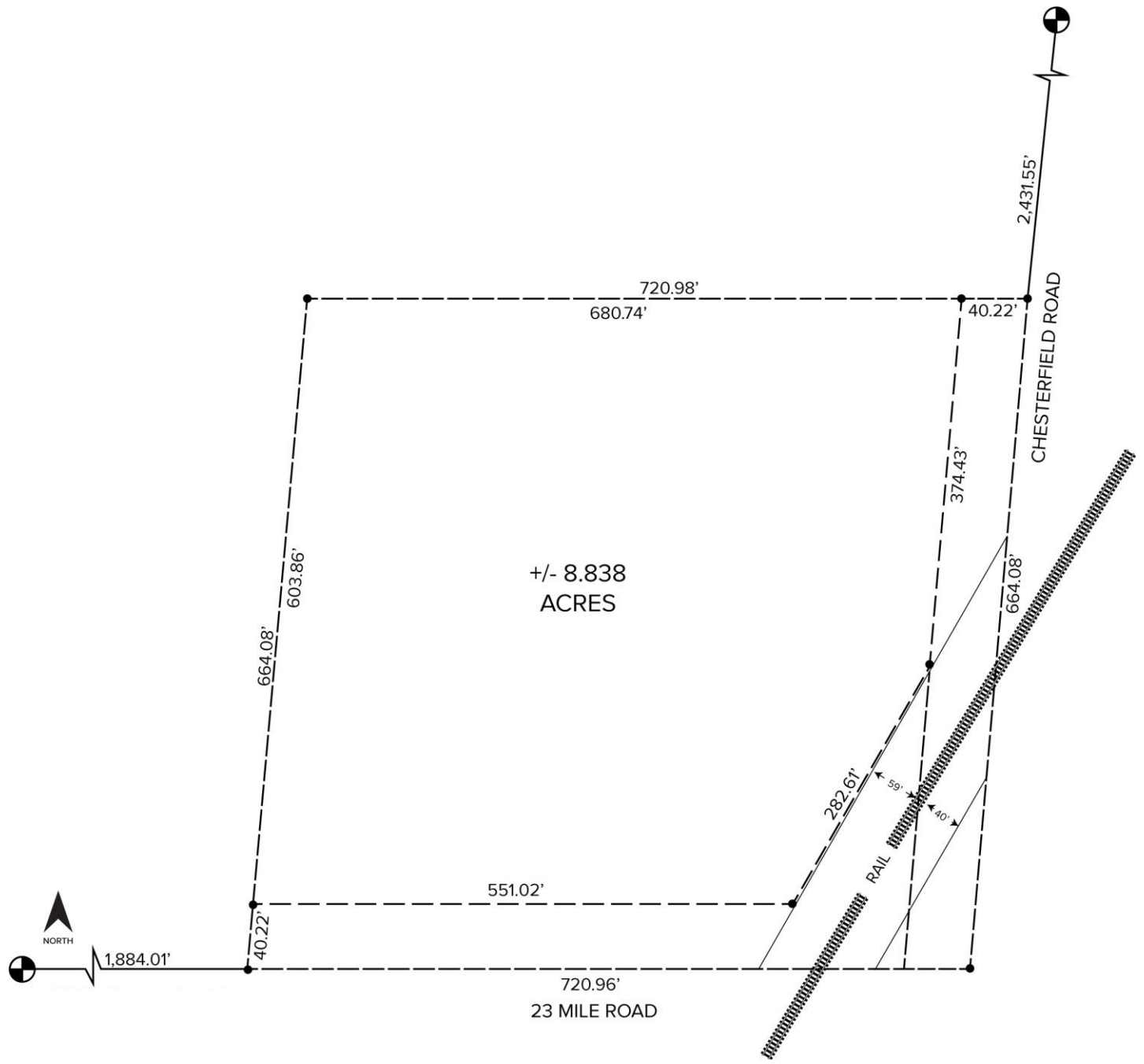
(248) 948 0107

cmonsour@signatureassociates.com

SIGNATURE ASSOCIATES
One Towne Square, Suite 1200
Southfield, MI 48076
www.signatureassociates.com

Information is subject to verification and no liability for errors or omissions is assumed. Price is subject to change and listing withdrawal.

Site Plan



For more information, please contact:
CHRIS MONSOUR
(248) 948 0107
cmonsour@signatureassociates.com

SIGNATURE ASSOCIATES
One Towne Square, Suite 1200
Southfield, MI 48076
www.signatureassociates.com