

FOR LEASE

The Green at Bloomfield

56 BROAD STREET AT LIBERTY STREET, BLOOMFIELD, NEW JERSEY

RETAIL

AVAILABLE IMMEDIATELY



PROPERTY INFO

FEATURES

- + **Space Available:**
±1,493 to ±7,000 SF
- + **Asking Rent:**
Upon Request
- + **NNN:** ±\$5.00 psf
- + **Comments:**
 - Adjacent to Bloomfield College Campus with approximately 2,100 students
 - Municipal parking available
- Close proximity to Bloomfield High School with approximately 1,950 students
- Dense Market
- 140 Luxury residential units-fully occupied
- + **Co-Tenants:**



NEIGHBORING OCCUPIERS



2017 Estimated Demographics

	.25 Mile	.5 Mile	1 Mile	3 Miles
Population	2,552	7,701	28,125	314,176
Households	1,097	3,326	12,155	116,872
Average Household Income	\$76,174	\$87,642	\$95,937	\$79,477
Daytime Population	5,032	9,003	24,196	250,848

FOR LEASE

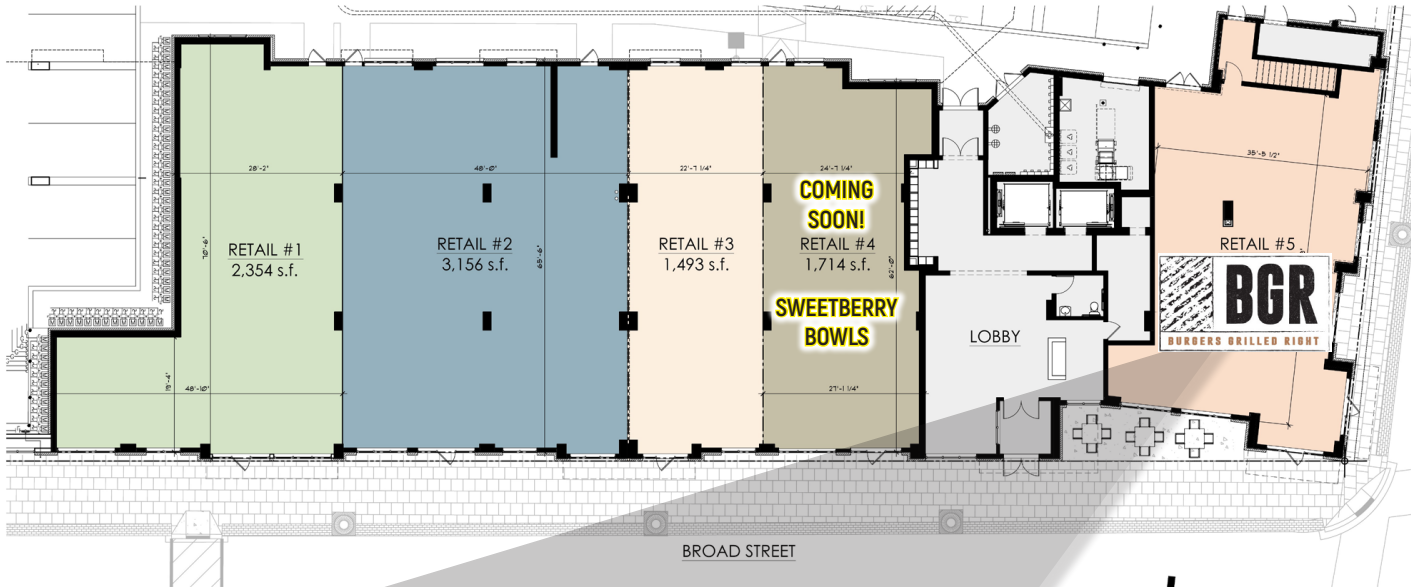
The Green at Bloomfield

56 BROAD STREET AT LIBERTY STREET, BLOOMFIELD, NEW JERSEY

RETAIL



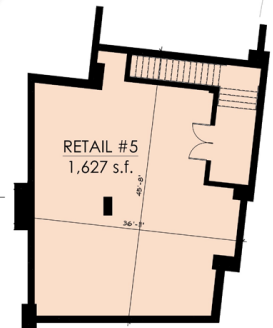
SITE PLAN



NOTE:
RETAIL SQUARE FOOTAGE CAN BE
ADJUSTED OR COMBINED



BASEMENT BUILDING PLAN
1/8" = 1'-0"
(EXCLUSIVELY FOR RETAIL #5)



3 MILE RADIUS

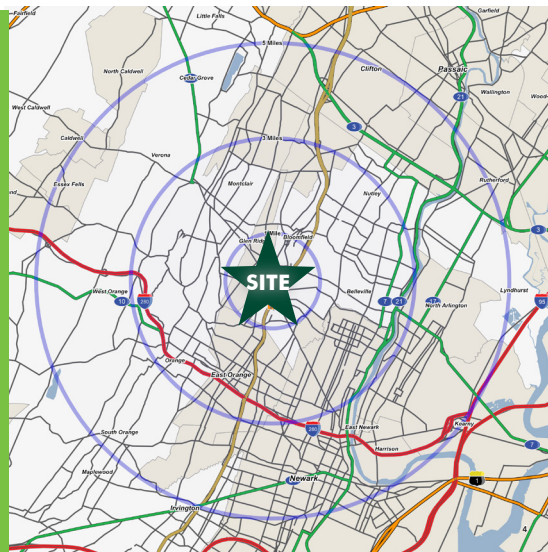
310,544
Overall Population

91,838
Employee Population

\$81,738
Average HHI

30.4%
Bachelor's Degree or Higher

26.5%
Annual HHI of \$100k+s



FOR LEASE

The Green at Bloomfield

56 BROAD STREET AT LIBERTY STREET, BLOOMFIELD, NEW JERSEY

RETAIL



RETAIL AERIAL



CONTACT US

Ira Kerner

First Vice President
+1 201 712 5836
ira.kerner@cbre.com

Nicole Nannola

Associate
+1 201 712 5821
nicole.nannola@cbre.com

© 2018 CBRE, Inc. This information has been obtained from sources believed reliable. We have not verified it and make no guarantee, warranty or representation about it. Any projections, opinions, assumptions or estimates used are for example only and do not represent the current or future performance of the property. You and your advisors should conduct a careful, independent investigation of the property to determine to your satisfaction the suitability of the property for your needs. Photos herein are the property of their respective owners and use of these images without the express written consent of the owner is prohibited. CBRE and the CBRE logo are service marks of CBRE, Inc. and/or its affiliated or related companies in the United States and other countries. All other marks displayed on this document are the property of their respective owners.

www.cbre.us

CBRE