



Woodlands Medical Office Building

1909 214 ST SE, BOTHELL, WA

FOR LEASE



SUITE 101: 4,667 RSF (first floor off main lobby, available now)

SUITE 210: 2,073 RSF
(available 08/01/2020)

LOCATED in a booming Eastside suburb, which is experiencing substantial residential growth

SUBSTANTIAL tenant improvement packages available

IMMEDIATE access to I-405, Bothell-Everett Highway

ROBUST fiber optic network

WALKING distance to numerous retail, food and service amenities

OTHER medical tenants include: Pacific Medical, EvergreenHealth, and Western Washington Medical Group

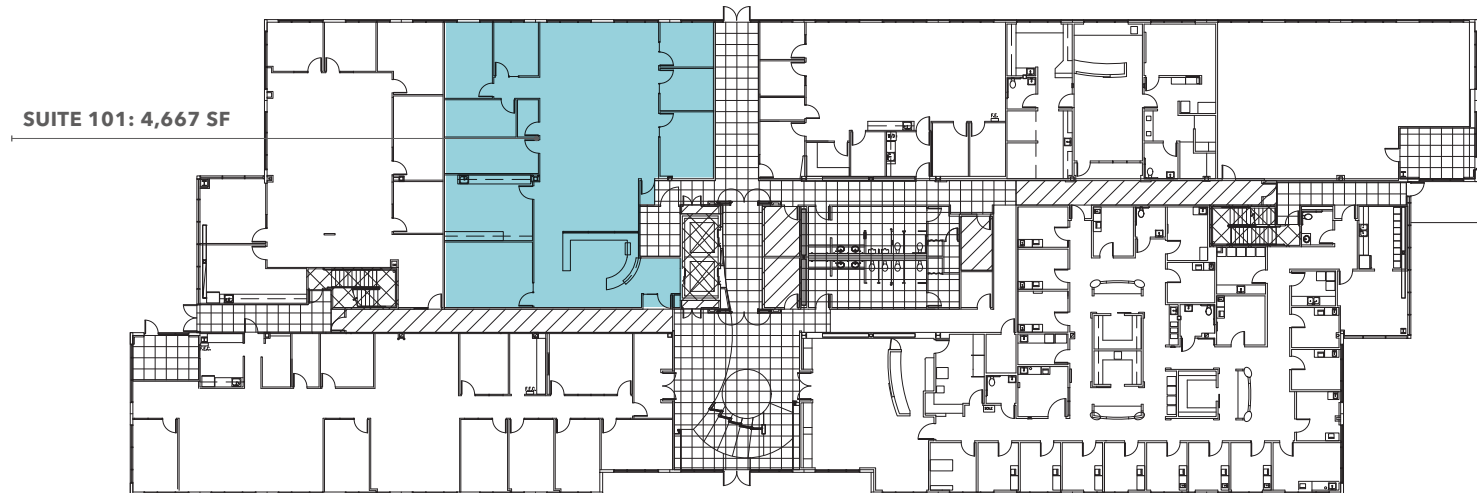
LEED Silver Certified Building quality and sustainability

FOR LEASE

Woodlands Medical Office Building

1909 214 STREET SE, BOTHELL, WA

First Floor Site Plan



NOW

DATE AVAILABLE

4,667

SQUARE FEET

KEITH HONSBERGER

425.450.1107

keith.honsberger@kidder.com

TODD BATTISON

206.296.9621

todd.battison@kidder.com

KIDDER.COM

This information supplied herein is from sources we deem reliable. It is provided without any representation, warranty, or guarantee, expressed or implied as to its accuracy. Prospective Buyer or Tenant should conduct an independent investigation and verification of all matters deemed to be material, including, but not limited to, statements of income and expenses. Consult your attorney, accountant, or other professional advisor.

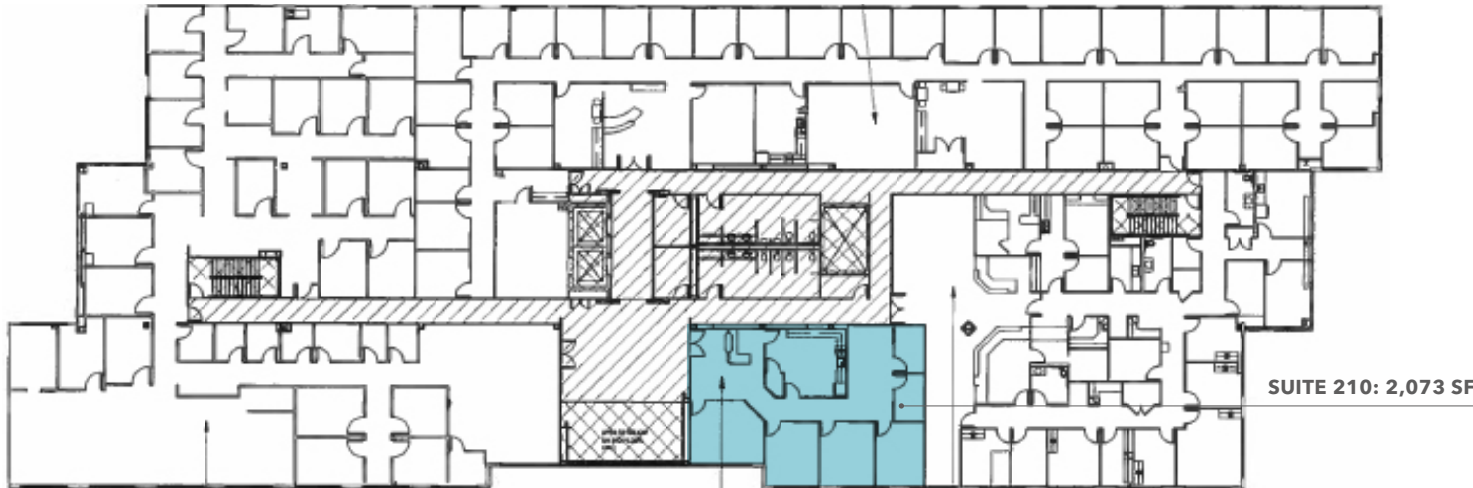


FOR LEASE

Woodlands Medical Office Building

1909 214 STREET SE, BOTHELL, WA

Second Floor Site Plan



NOW

DATE AVAILABLE

2,073

SQUARE FEET

KEITH HONSBERGER

425.450.1107

keith.honsberger@kidder.com

TODD BATTISON

206.296.9621

todd.battison@kidder.com

KIDDER.COM

This information supplied herein is from sources we deem reliable. It is provided without any representation, warranty, or guarantee, expressed or implied as to its accuracy. Prospective Buyer or Tenant should conduct an independent investigation and verification of all matters deemed to be material, including, but not limited to, statements of income and expenses. Consult your attorney, accountant, or other professional advisor.

km Kidder
Mathews