

1681 94TH LANE NE

BLAINE | MN 55449



FOR LEASE



AVAILABLE SPACE:

5,400 Sq. Ft. - Office

34,200 Sq. Ft. - Warehouse

39,600 Sq. Ft. - Total

LEASE RATE:

\$9.00 Per Sq. Ft. - Office

\$4.50 Per Sq. Ft. - Warehouse

EST. 2019 TAX & CAM:

\$2.42 Per Sq. Ft.

LOADING:

Two (2) 12'x14' Drive-In Doors

Four (4) 8'x10' Dock Doors

CLEAR HEIGHT:

22.5'

PROPERTY ID:

29-31-23-44-0001

PROPERTY HIGHLIGHTS

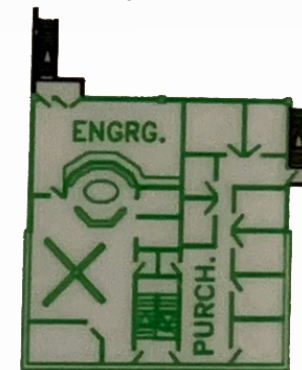
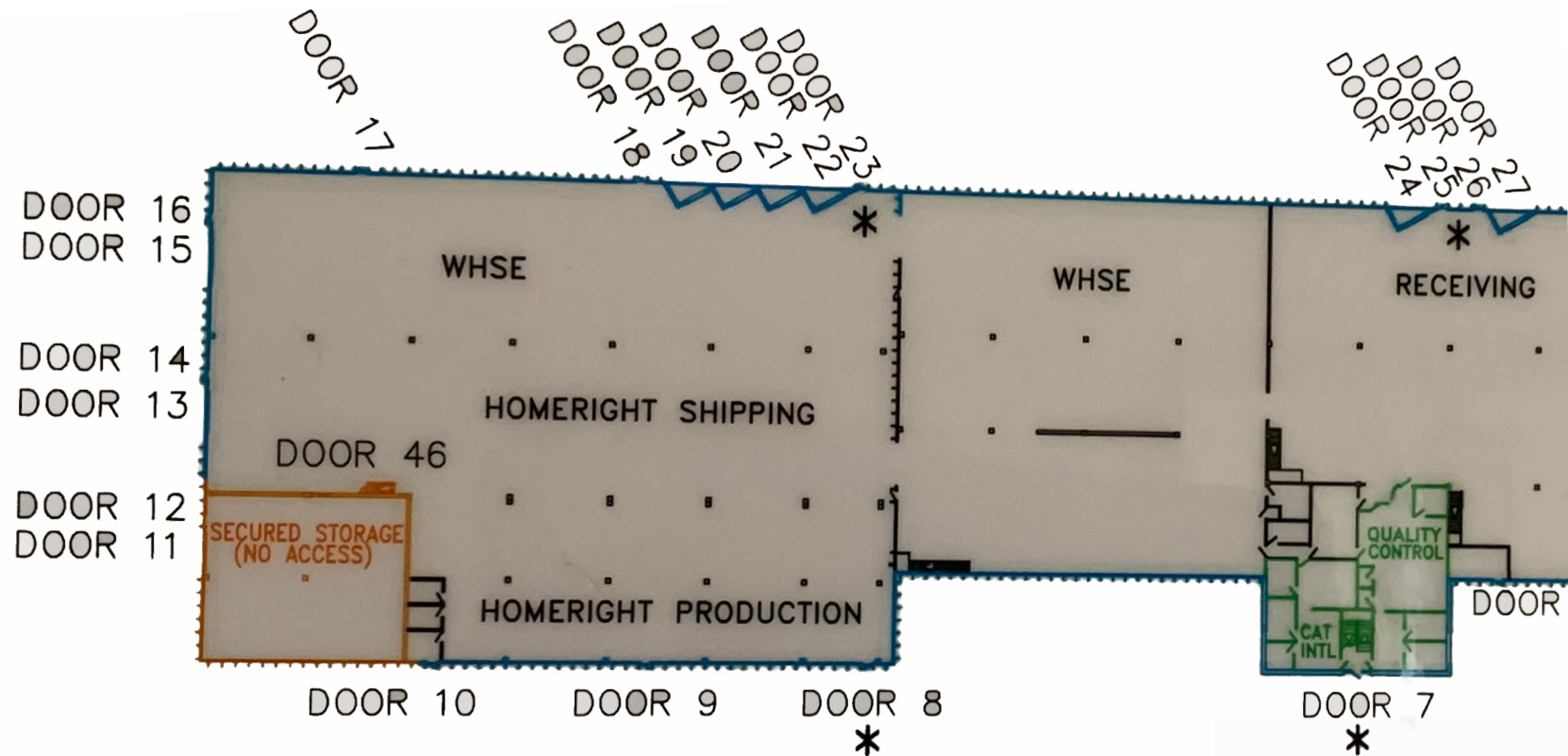
- Easy access to US-10 and MN-65
- Built in 1980
- Ample parking
- Heavy power
- AVAILABLE NOW!



1681 94TH LANE NE

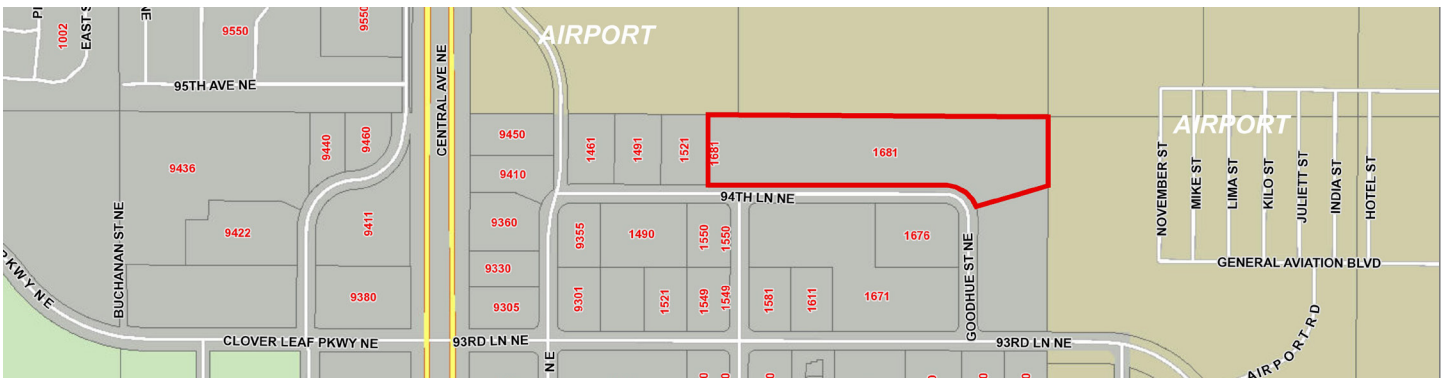
BLAINE | MN 55449

FLOOR PLAN



1681 94TH LANE NE

BLAINE | MN 55449



DAN FRIEDNER
Managing Director
D +1 612 430 9991
M +1 612 599 7864
dan.friedner@ngkf.com

JAY CHMIELESKI
Managing Director
D +1 612 430 9982
M +1 612 275 3772
jay.chmielecki@ngkf.com

PATRICK CULLEN
Associate
D +1 612 430 9995
M +1 651 308 4271
patrick.cullen@ngkf.com

www.ngkf.com

The information contained herein has been obtained from sources deemed reliable but has not been verified and no guarantee, warranty or representation, either express or implied, is made with respect to such information. Terms of sale or lease and availability are subject to change or withdrawal without notice.

