

1510 SOUTH CENTRAL

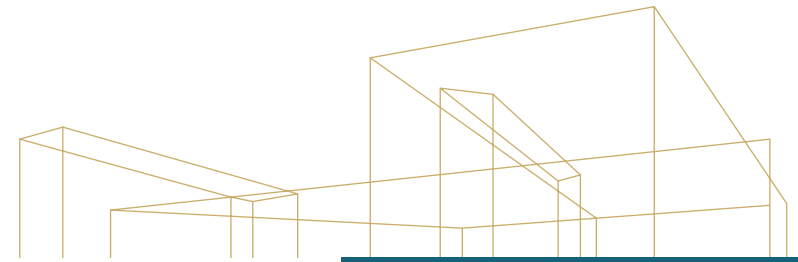
Medical Office Space For Lease

1510 SOUTH CENTRAL AVENUE | GLENDALE, CALIFORNIA

 **Kidder
Mathews**

CENTRAL

1510 SOUTH CENTRAL AVENUE



AVAILABILITIES

Suite	RSF	Rate	Description
400	4,063	\$3.45/RSF per month FSG	Identity off of the elevator lobby with 9 exam rooms, 3 offices, break room, restroom, open work area, storage, and reception. Suite is divisible.
520	1,399	\$3.45/RSF per month FSG	Contiguous with Suite 530, 540 and Suite 550 to 6,315 RSF.
530	1,938	\$3.45/RSF per month FSG	Contiguous with Suite 520, 540 and Suite 550 to 6,315 RSF.
540	1,668	\$3.45/RSF per month FSG	Contiguous with Suite 520, 530 and Suite 550 to 6,315 RSF.
550	1,310	\$3.45/RSF per month FSG	Contiguous with Suite 520, 530 and Suite 540 to 6,315 RSF.
610	1,903	\$3.45/RSF per month FSG	4 exam rooms, 1 office, restroom, reception area, break room, storage and open work area. Available with 60 days notice. Contiguous with Suite 615 to 3,024 RSF.
615	1,121	\$3.45/RSF per month FSG	2 exam rooms, 1 office, restroom and reception. Contiguous with Suite 610 to 3,024 RSF.
630	1,681	\$3.45/RSF per month FSG	3 exam rooms, 2 offices, restroom, open work area and reception.
650	1,548	\$3.45/RSF per month FSG	3 exam rooms, 1 office, restroom, open work area and storage.

ON CAMPUS location at Glendale Memorial Hospital

BUILDING ENTRY and common area renovations underway

LABCORP and pharmacy onsite

ONSITE management with 24/7 building access

CONVENIENT access to the 5, 2 and 134 freeways

PARKING RATIO of 5 per 1,000 RSF leased, currently at \$20.00 per unreserved stall per month

BILL BOYD
626.873.1801
bill.boyd@kidder.com
LIC N° 00816177

LINDA LEE
626.873.1802
linda.lee@kidder.com
LIC N° 01278768

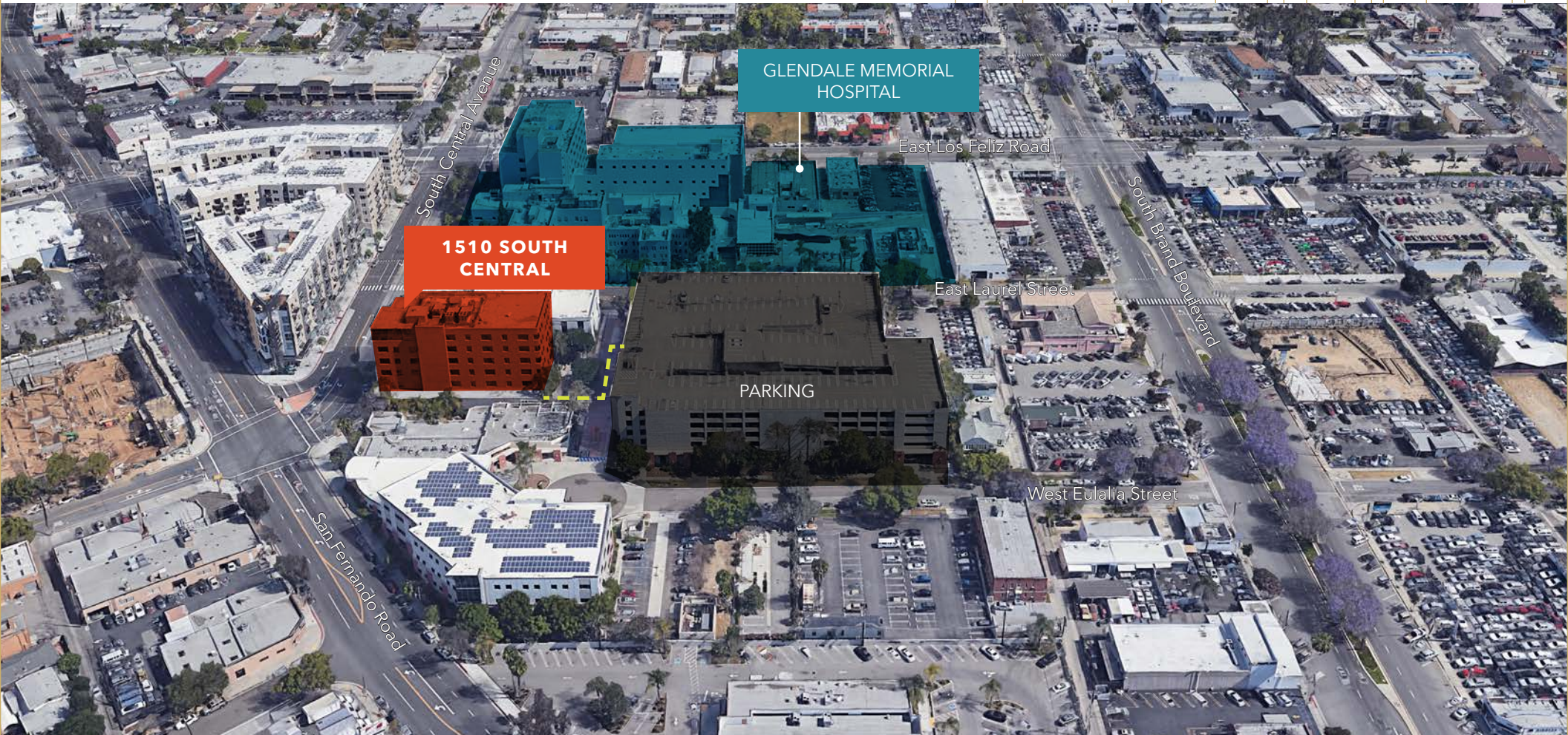
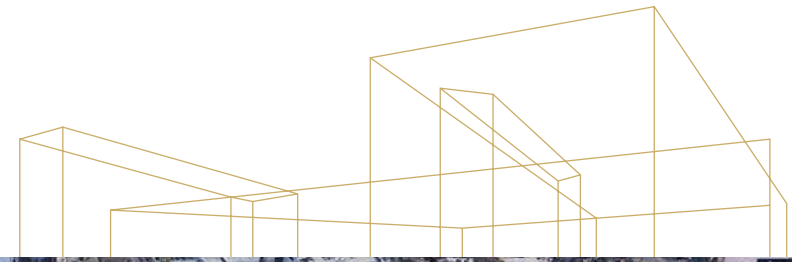
SCOTT UNGER
626.873.1803
scott.unger@kidder.com
LIC N° 01855517

KIDDER.COM

This information supplied herein is from sources we deem reliable. It is provided without any representation, warranty, or guarantee, expressed or implied as to its accuracy. Prospective Buyer or Tenant should conduct an independent investigation and verification of all matters deemed to be material, including, but not limited to, statements of income and expenses. Consult your attorney, accountant, or other professional advisor.



1510 SOUTH CENTRAL AVENUE



BILL BOYD
626.873.1801
bill.boyd@kidder.com
LIC N° 00816177

LINDA LEE
626.873.1802
linda.lee@kidder.com
LIC N° 01278768

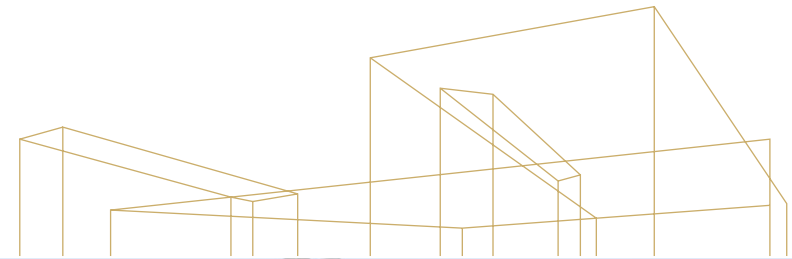
SCOTT UNGER
626.873.1803
scott.unger@kidder.com
LIC N° 01855517

[KIDDER.COM](https://www.kidder.com)

This information supplied herein is from sources we deem reliable. It is provided without any representation, warranty, or guarantee, expressed or implied as to its accuracy. Prospective Buyer or Tenant should conduct an independent investigation and verification of all matters deemed to be material, including, but not limited to, statements of income and expenses. Consult your attorney, accountant, or other professional advisor.



1510 SOUTH CENTRAL AVENUE



BILL BOYD
626.873.1801
bill.boyd@kidder.com
LIC N° 00816177

LINDA LEE
626.873.1802
linda.lee@kidder.com
LIC N° 01278768

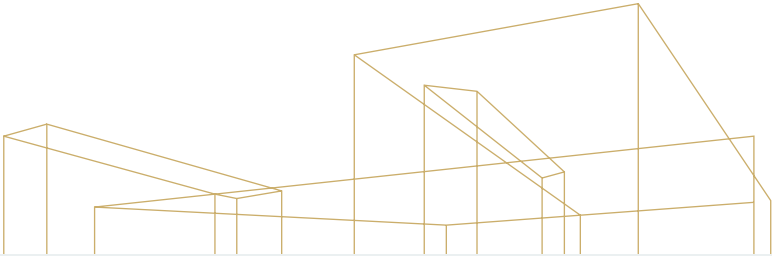
SCOTT UNGER
626.873.1803
scott.unger@kidder.com
LIC N° 01855517

KIDDER.COM

This information supplied herein is from sources we deem reliable. It is provided without any representation, warranty, or guarantee, expressed or implied as to its accuracy. Prospective Buyer or Tenant should conduct an independent investigation and verification of all matters deemed to be material, including, but not limited to, statements of income and expenses. Consult your attorney, accountant, or other professional advisor.



1510 SOUTH CENTRAL AVENUE



Fourth Floor

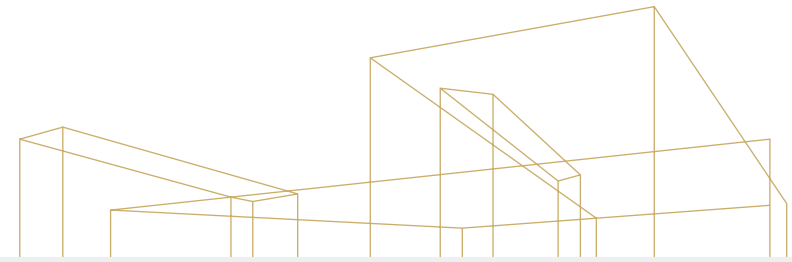


AVAILABILITIES

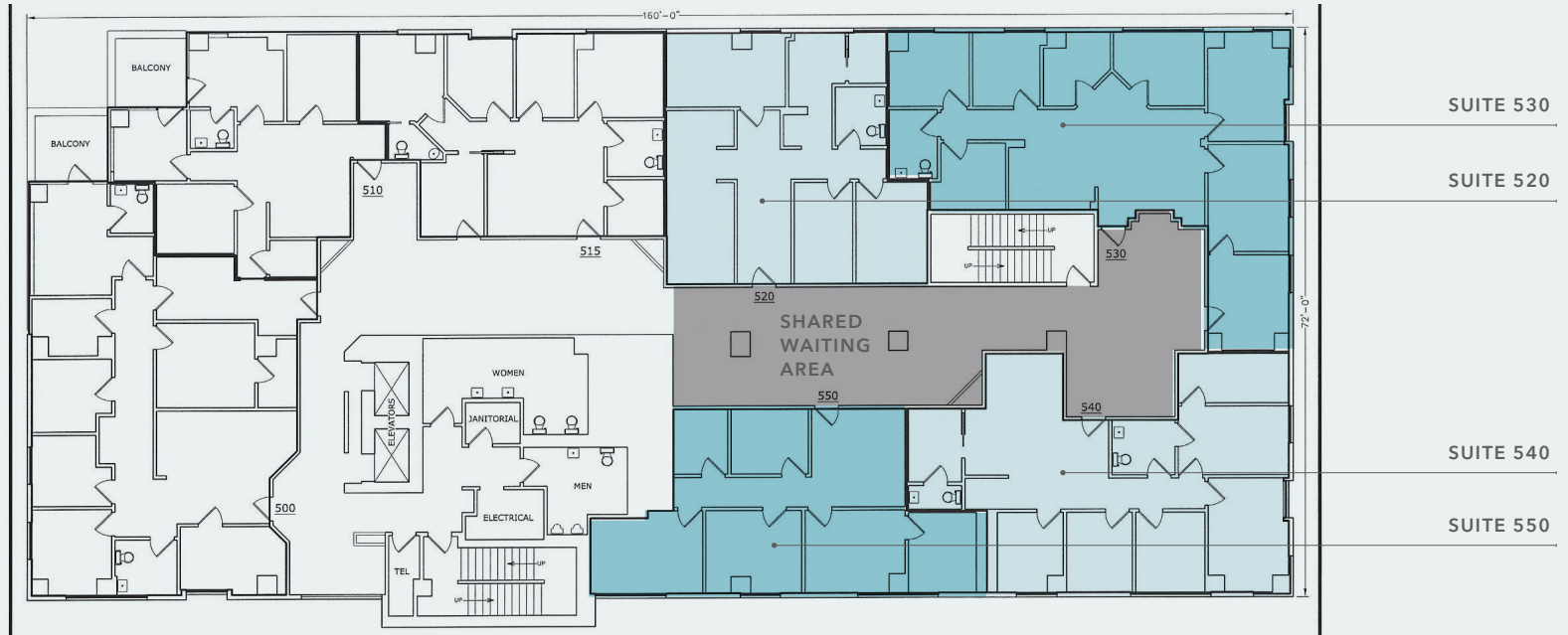
Suite	RSF	Features
400	4,063	Identity off of the elevator lobby with 9 exam rooms, 3 offices, break room, restroom, open work area, storage, and reception. Suite is divisible.

This information supplied herein is from sources we deem reliable. It is provided without any representation, warranty, or guarantee, expressed or implied as to its accuracy. Prospective Buyer or Tenant should conduct an independent investigation and verification of all matters deemed to be material, including, but not limited to, statements of income and expenses. Consult your attorney, accountant, or other professional advisor.

1510 SOUTH CENTRAL AVENUE



Fifth Floor



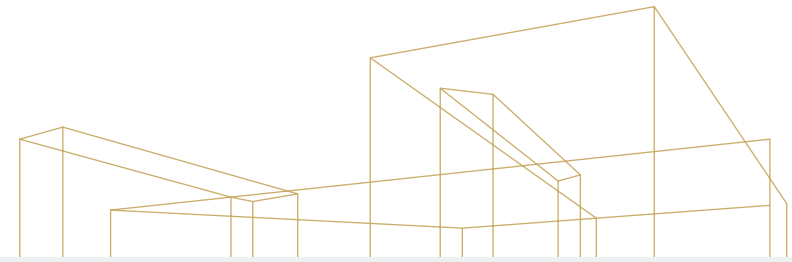
AVAILABILITIES

UP TO 6,315 RSF CONTIGUOUS SPACE AVAILABLE

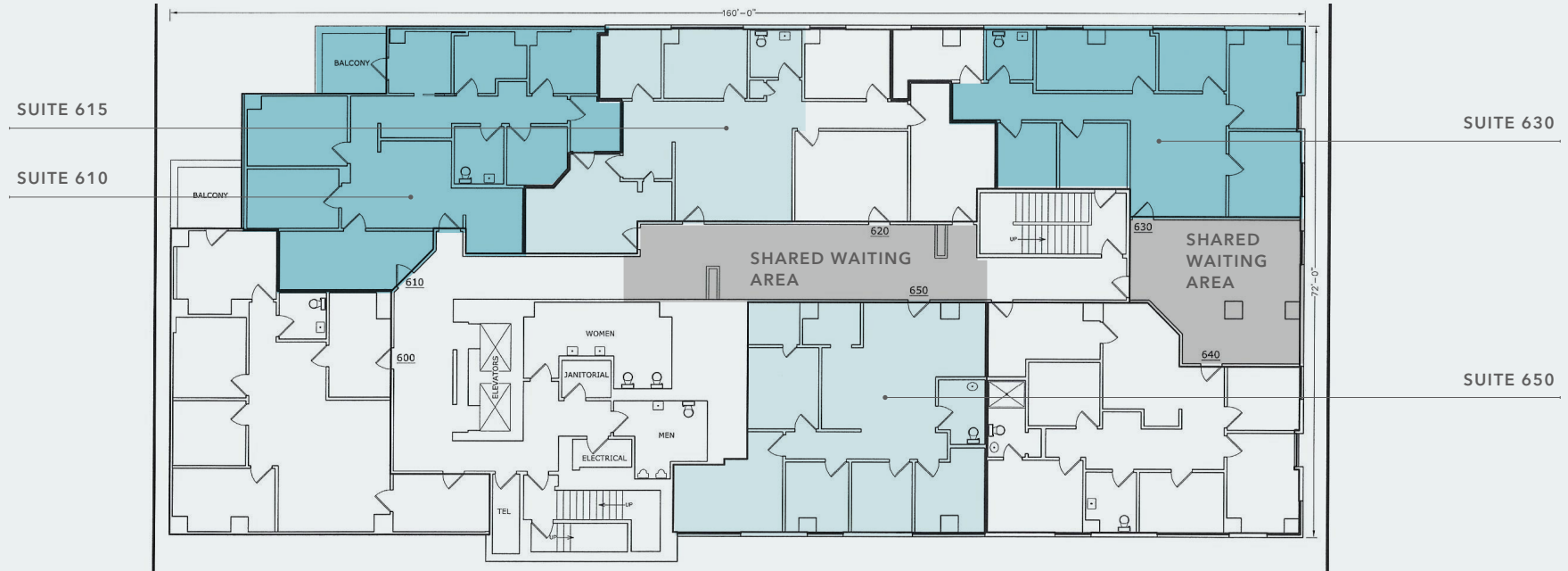
Suite	RSF	Features
520	1,399	Contiguous with Suite 530, 540 and 550 to 6,315 RSF.
530	1,938	Contiguous with Suite 520, 540 and Suite 550 to 6,315 RSF.
540	1,668	Contiguous with Suite 520, 530 and Suite 550 to 6,315 RSF.
550	1,310	Contiguous with Suite 520, 530 and Suite 540 to 6,315 RSF.

This information supplied herein is from sources we deem reliable. It is provided without any representation, warranty, or guarantee, expressed or implied as to its accuracy. Prospective Buyer or Tenant should conduct an independent investigation and verification of all matters deemed to be material, including, but not limited to, statements of income and expenses. Consult your attorney, accountant, or other professional advisor.

1510 SOUTH CENTRAL AVENUE



Sixth Floor



AVAILABILITIES

UP TO 9,188 RSF CONTIGUOUS SPACE POTENTIALLY AVAILABLE

Suite	RSF	Features
610	1,903	4 exam rooms, 1 office, restroom, reception area, break room, storage and open work area. Available with 60 days notice. Contiguous with Suite 615 to 3,024 RSF.
615	1,121	2 exam rooms, 1 office, restroom and reception. Contiguous with Suite 610 to 3,024 RSF.
630	1,681	3 exam rooms, 2 offices, restroom, open work area and reception.
650	1,548	3 exam rooms, 1 office, restroom, open work area and storage.

This information supplied herein is from sources we deem reliable. It is provided without any representation, warranty, or guarantee, expressed or implied as to its accuracy. Prospective Buyer or Tenant should conduct an independent investigation and verification of all matters deemed to be material, including, but not limited to, statements of income and expenses. Consult your attorney, accountant, or other professional advisor.