

# LAKESHORE TOWERS III

1811 VON KARMAN AVENUE  
IRVINE | CALIFORNIA



SUITE	RSF	RATE	BUILD-OUT DESCRIPTION	AVAILABILITY
570	6,696	\$3.44 FSG	14 offices, large conference room, kitchen, storage, reception area, open area	Immediate
900	19,457	\$3.52 FSG	47 offices, 5 conference rooms, 2 copy rooms, breakroom, restrooms, open area, storage	Immediate

**Parking: 3.75 per 1,000 usable square feet**

Unreserved: \$75.00 per stall, per month

**Building Size: 233,750 rentable square foot**

**GREG BROWN**  
EXECUTIVE DIRECTOR  
949.930.9218  
GREG.BROWN@CUSHWAKE.COM  
LIC. #00834223

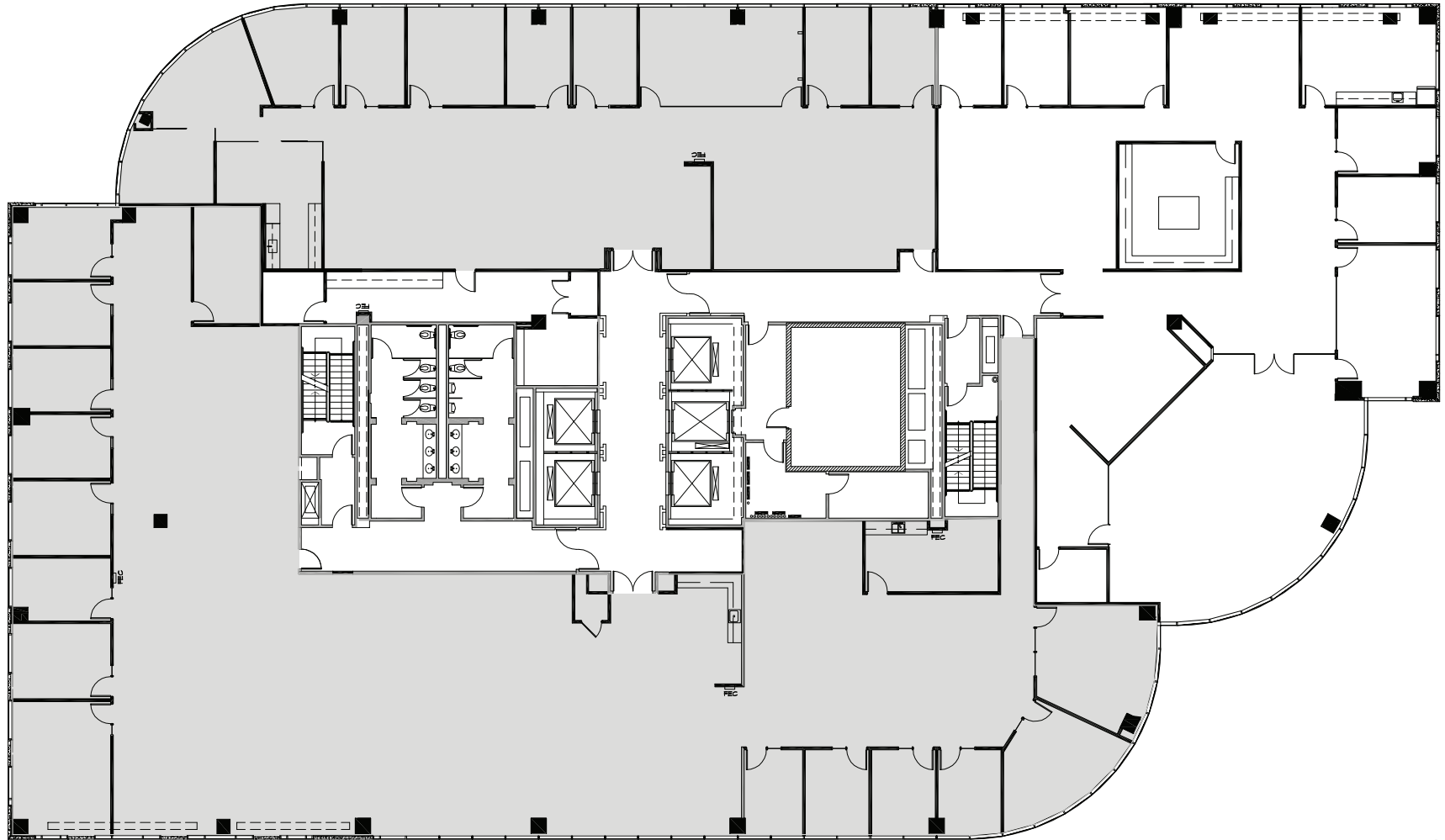
**ROBERT LAMBERT**  
EXECUTIVE DIRECTOR  
949.930.9212  
ROBERT.LAMBERT@CUSHWAKE.COM  
LIC. #01758074

**RICK KAPLAN**  
EXECUTIVE VICE CHAIRMAN  
949.955.7643  
RICK.KAPLAN@CUSHWAKE.COM  
LIC. #00863069

**CUSHMAN & WAKEFIELD OF CALIFORNIA, INC.**  
2020 MAIN STREET, SUITE 1000  
IRVINE, CALIFORNIA 92614  
WWW.CUSHMANWAKEFIELD.COM  
LIC. #00616335

SUITE 550  
5,059 USF  
5,939 RSF

"AVAILABLE"  
SUITE 570  
5,705 USF  
6,696 RSF



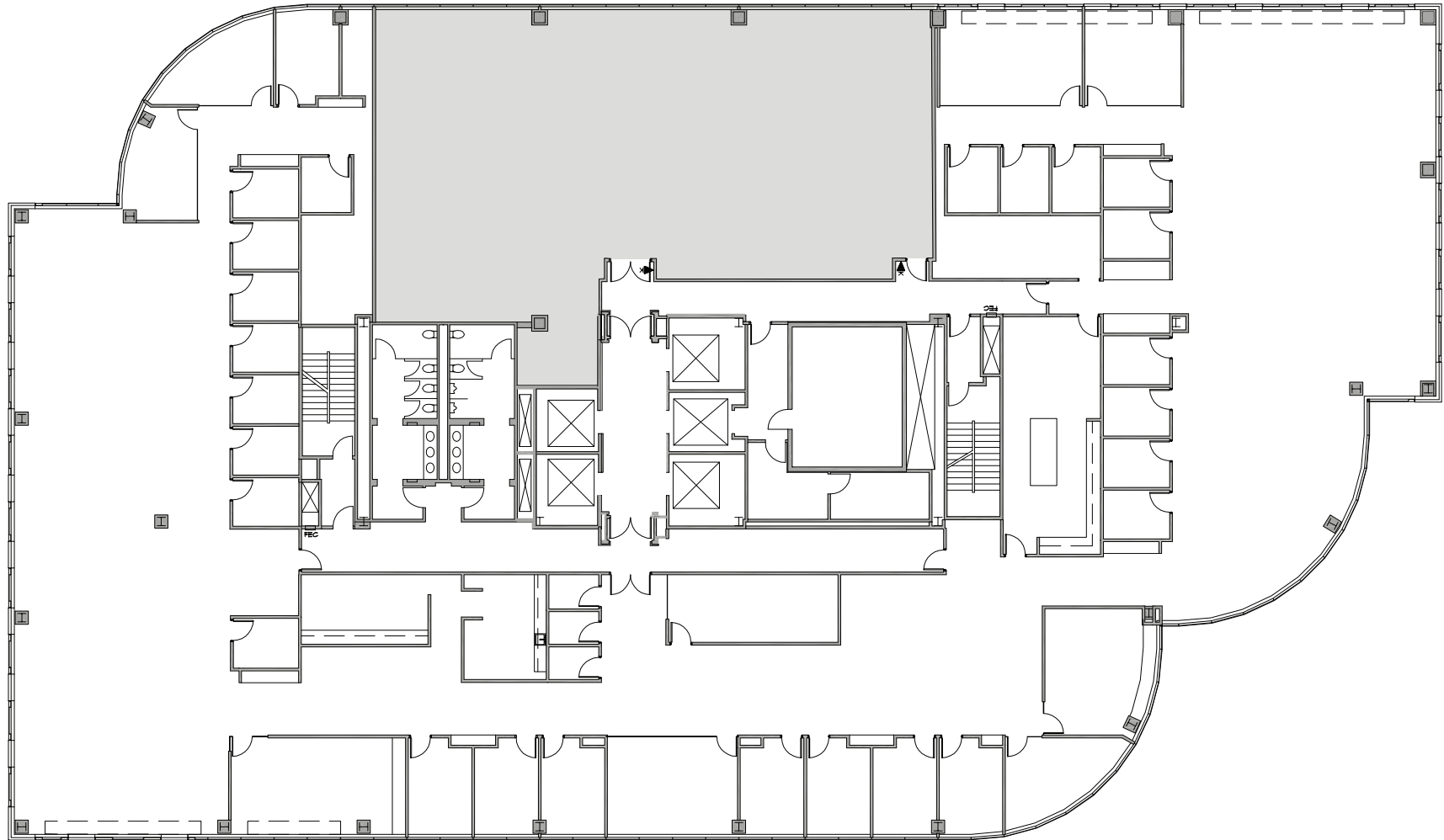
SUITE 500  
9,629 USF  
11,303 RSF



ROBERT LAMBERT  
(949) 930-9212  
robert.lambert@cushwake.com  
RICK KAPLAN  
(949) 955-7643  
rick.kaplan@cushwake.com  
GREG BROWN  
(949) 930-9218  
greg.browncushwake.com

REVISED: 07/19/17

SUITE 950  
4,030 USF  
4,479 RSF



"AVAILABLE"  
SUITE 900  
17,509 USF  
19,457 RSF

SCALE: N.T.S.



REVISED: 07/19/17