



# 1905-13 N. MILWAUKEE AVE.

CHICAGO, IL 60647



**HIGH  
DAYTIME &  
NIGHTTIME  
FOOT  
TRAFFIC!**

**FOR RENT | RETAIL**

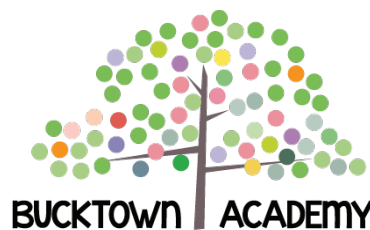
JUST OFF THE 6 CORNER INTERSECTION OF MILWAUKEE, WESTERN AND ARMITAGE. 1/2 BLOCK FROM BLUE LINE WESTERN STOP. ONE SPACE LEFT IN MIXED-USE BUILDING. MCDONALD'S, WALGREENS, ART THEATER AND MANY NEW CONDOS AND HOMES IN THE AREA.

- SPACE AVAILABLE | 1,000 SF**
- ANNUAL NET RENT\* | \$19 / SF**
- CAM & TAX | \$6.75 / SF**
- POPULATION | 60,000+ WITHIN 1 MILE**
- AVERAGE HH INCOME | \$80,000+ WITHIN 1 MILE**
- TRAFFIC | 12,000 VEHICLES PER DAY**

\*Available space only.



NEARBY



CONTACT

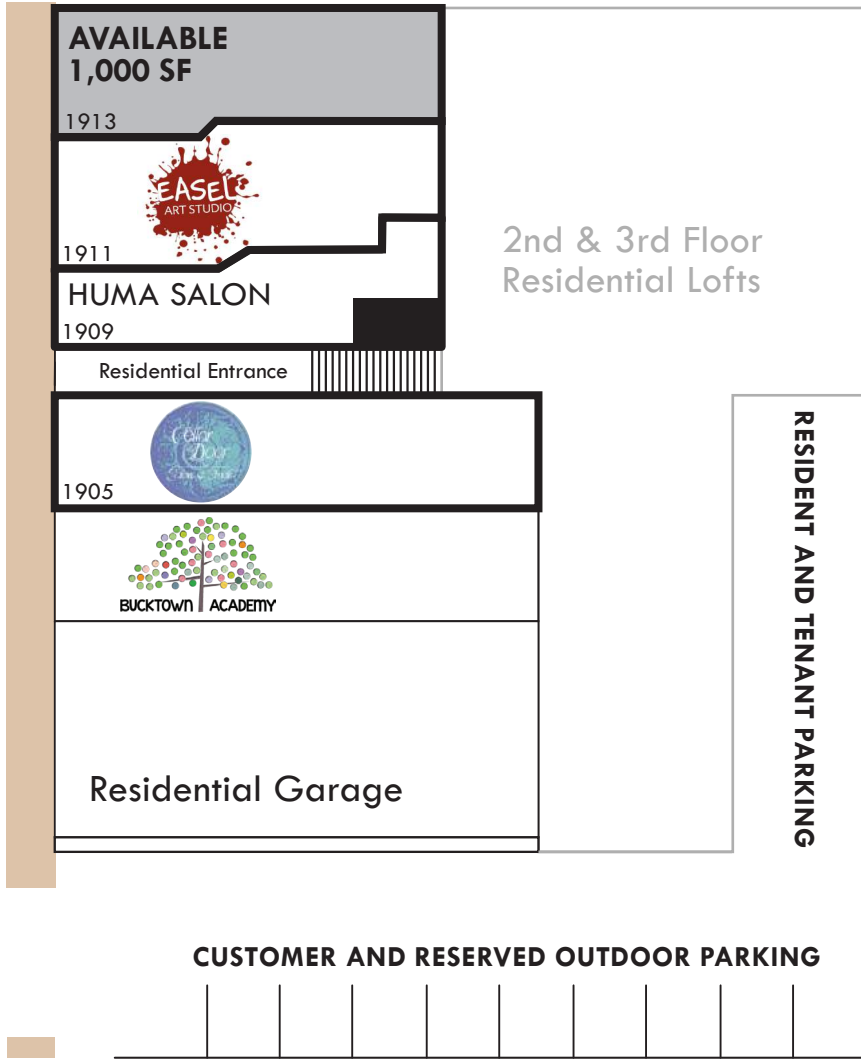
**TERRI COX** 312-337-1001 ext. 2028 [tcov@matanky.com](mailto:tcov@matanky.com)

# 1905-13 N. MILWAUKEE AVE.

CHICAGO ILLINOIS 60647

SITE PLAN

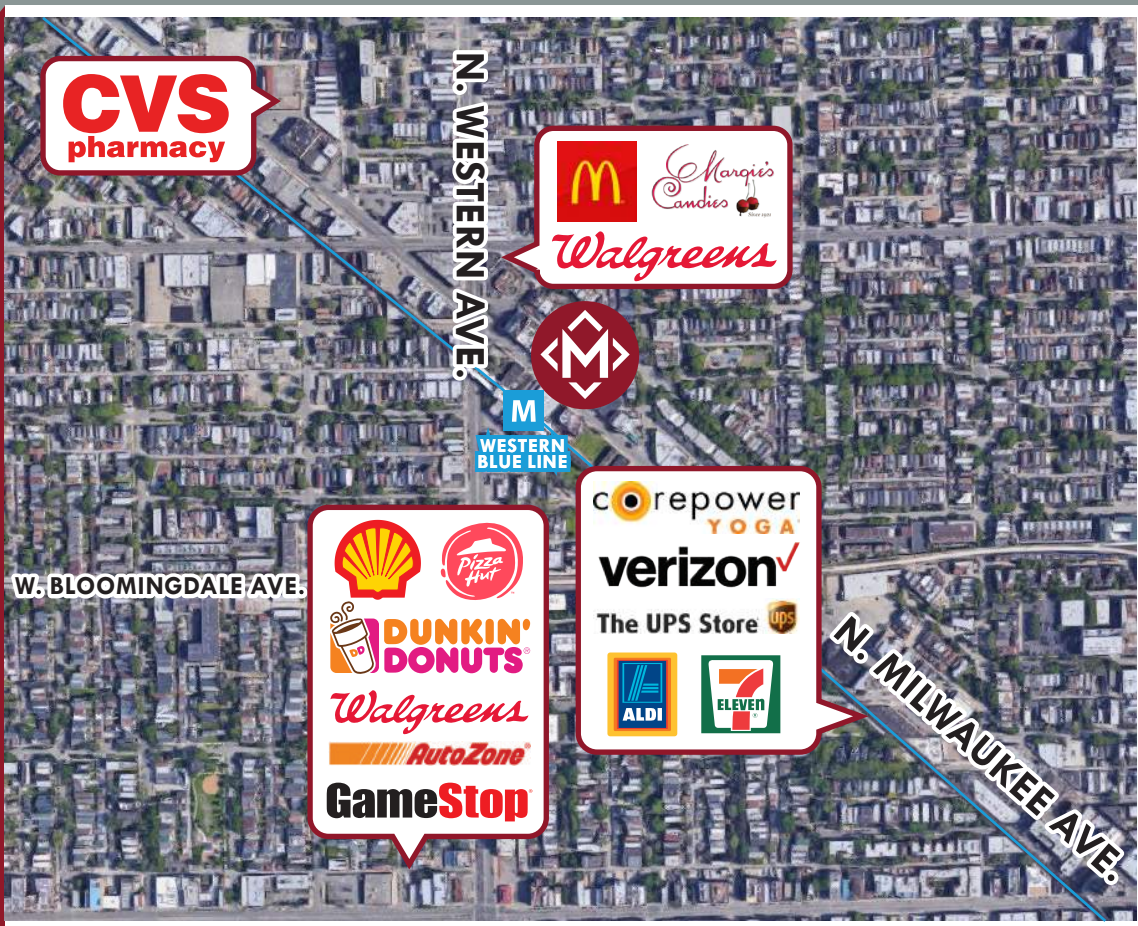
MILWAUKEE AVE.



#	SF	TENANT
1905	1,390	Cellar Door Salon
1909	789	Huma Salon
1911	1,060	Easel Art Studio
1913	1,000	AVAILABLE



AERIAL



MAP



312-337-1001



TERRI COX

JOIN US ON:



MATANKY REALTY GROUP

WWW.MATANKY.COM