



Clover Park Professional Square

Clover Park Professional Square is a two story multi tenant office building in the heart of Lakewood. Located within minutes of I-5, it is an easy walk to the Lakewood Towne Centre. Directory signage is located in the landscaped courtyard and panel signage hangs overhead along the walkways. A lift at the end of the building makes it accessible. One lower floor suite is available, as well as four upper floor suites.

Property Overview

AVAILABLE SPACES:

- Suite 110 of 900 SF
- Suite 201 of 2,000 SF
- Suite 203B of 400 SF
- Suite 205 of 1,040 SF
- Suite 210 of 878 SF

- Service lift for ADA accessibility
- Ample parking in lighted lot
- Lease Rate for lower floor: \$20/sf/yr modified gross
- Lease Rate for upper floor: \$18/sf/yr modified gross
- Within minutes of I-5 and Lakewood Town Centre
- NNN is included in the rent
- Tenant pays power directly to utility company

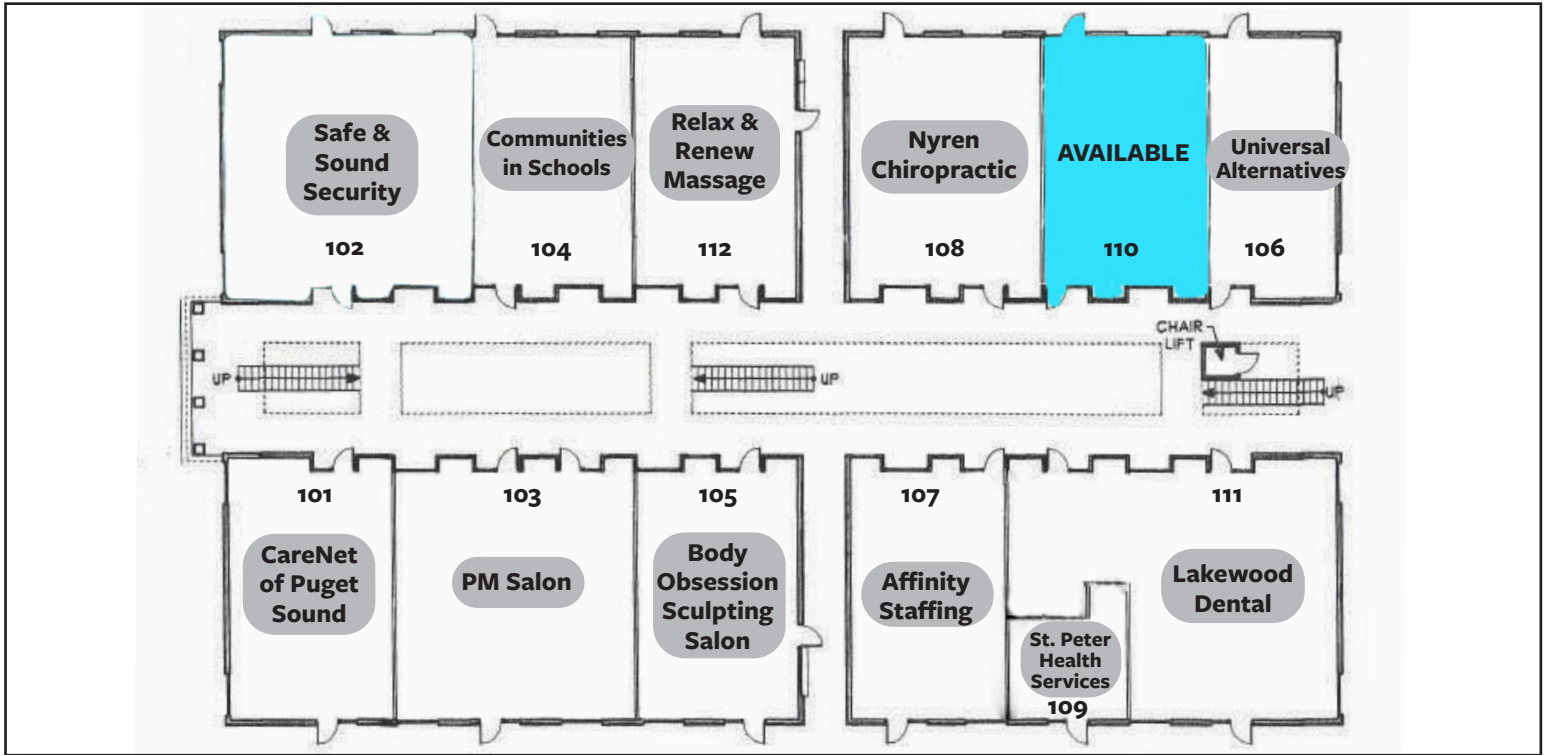
DISCLAIMER: The above information has been secured from sources believed to be reliable, however, no representations are made to its accuracy. Prospective tenants or buyers should consult their professional advisors and conduct their own independent investigation. Properties are subject to change in price and/or availability without notice.



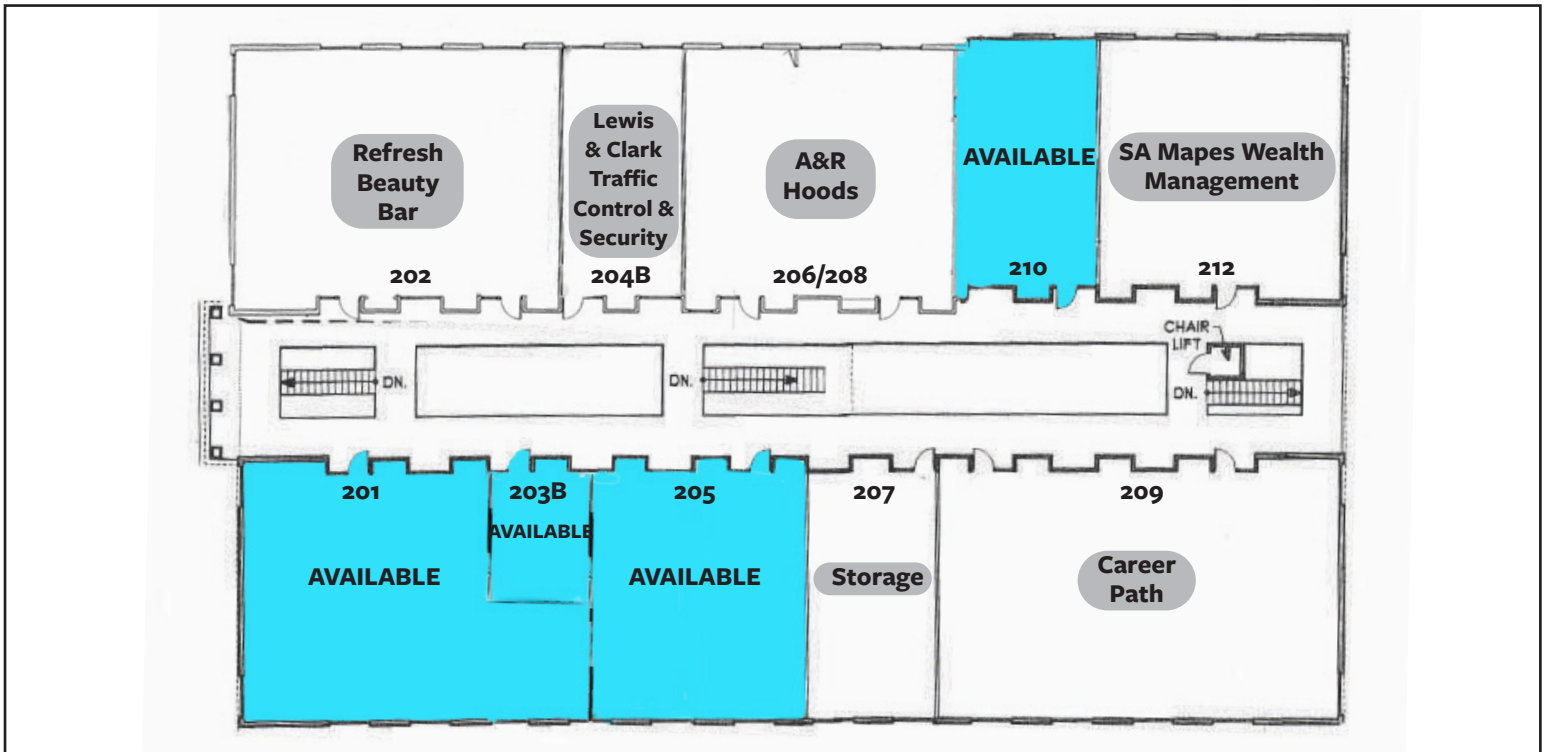


Retail/Office Space for Lease

LOWER FLOOR AVAILABILITY



UPPER FLOOR AVAILABILITY





Retail/Office Space for Lease

EXTERIOR PHOTOS



INTERIOR PHOTOS - Suite 110







Retail/Office Space for Lease

INTERIOR PHOTOS - Suite 203B



INTERIOR PHOTOS - Suite 205





INTERIOR PHOTOS - Suite 210

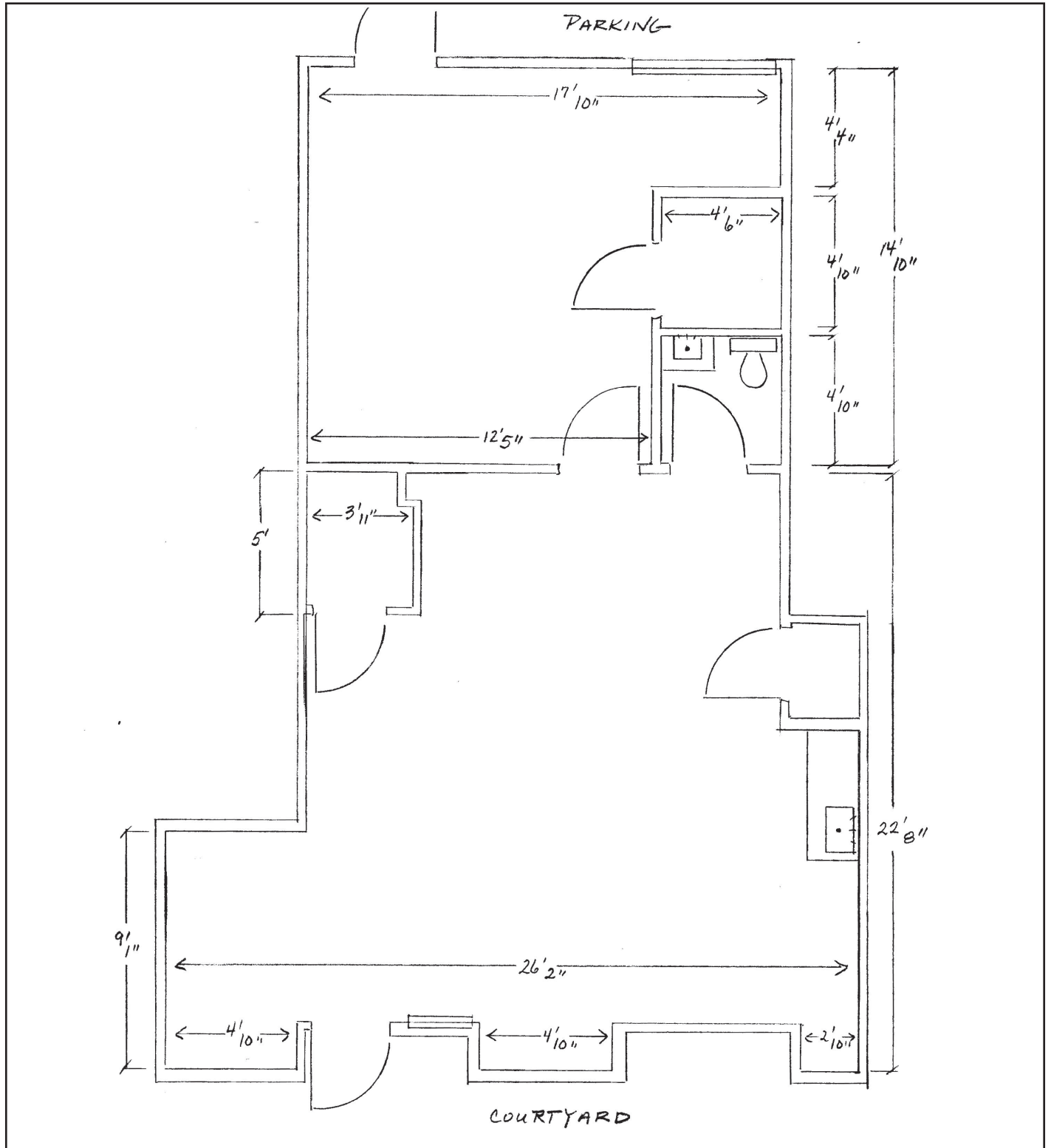


11120 Gravelly Lake Dr SW Ste 2
Lakewood, Washington 98499
johnson-commercial.com

Margot Johnson
margot@johnson-commercial.com
(253) 209-9998

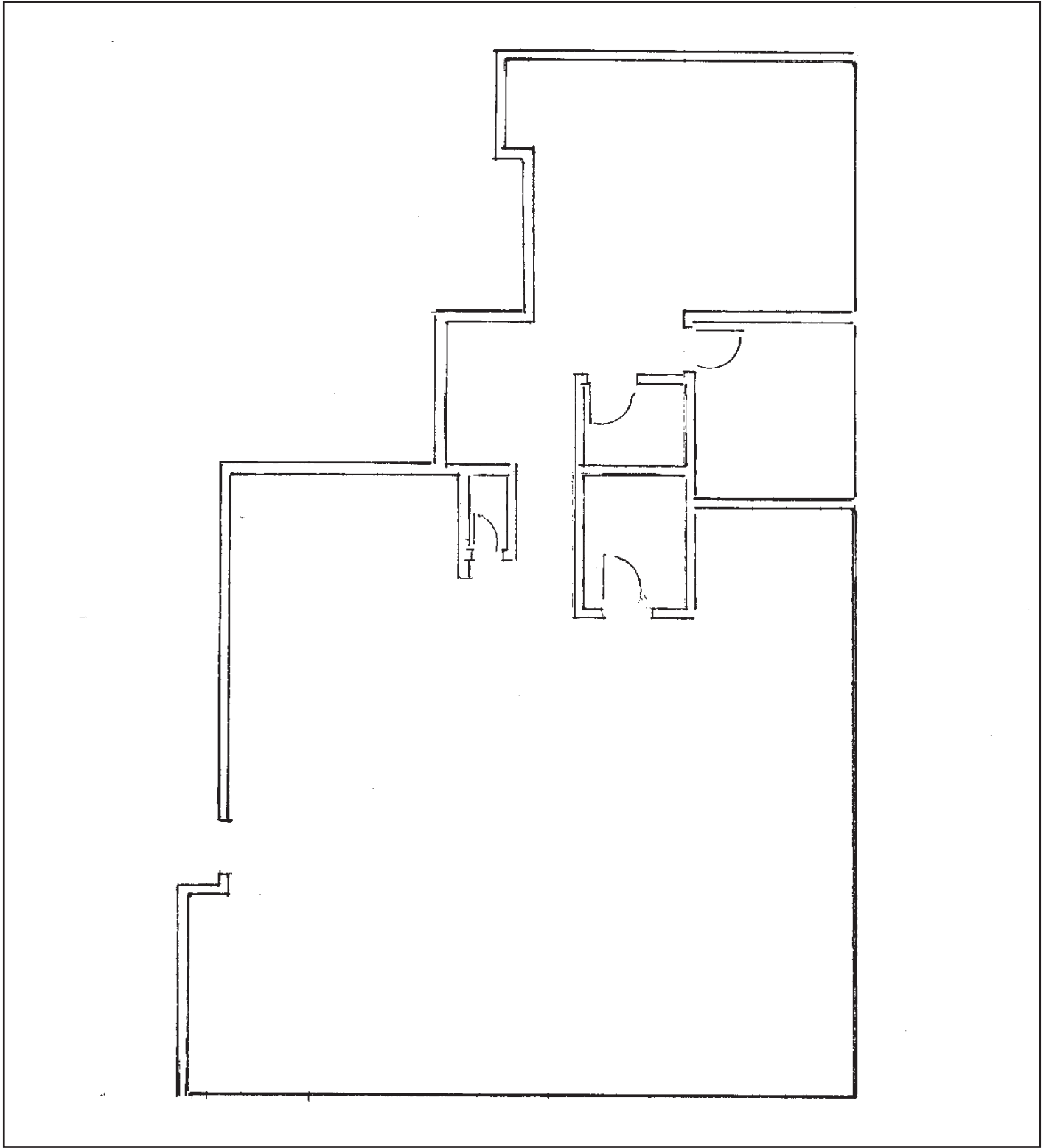


Floor Plan - Suite 110



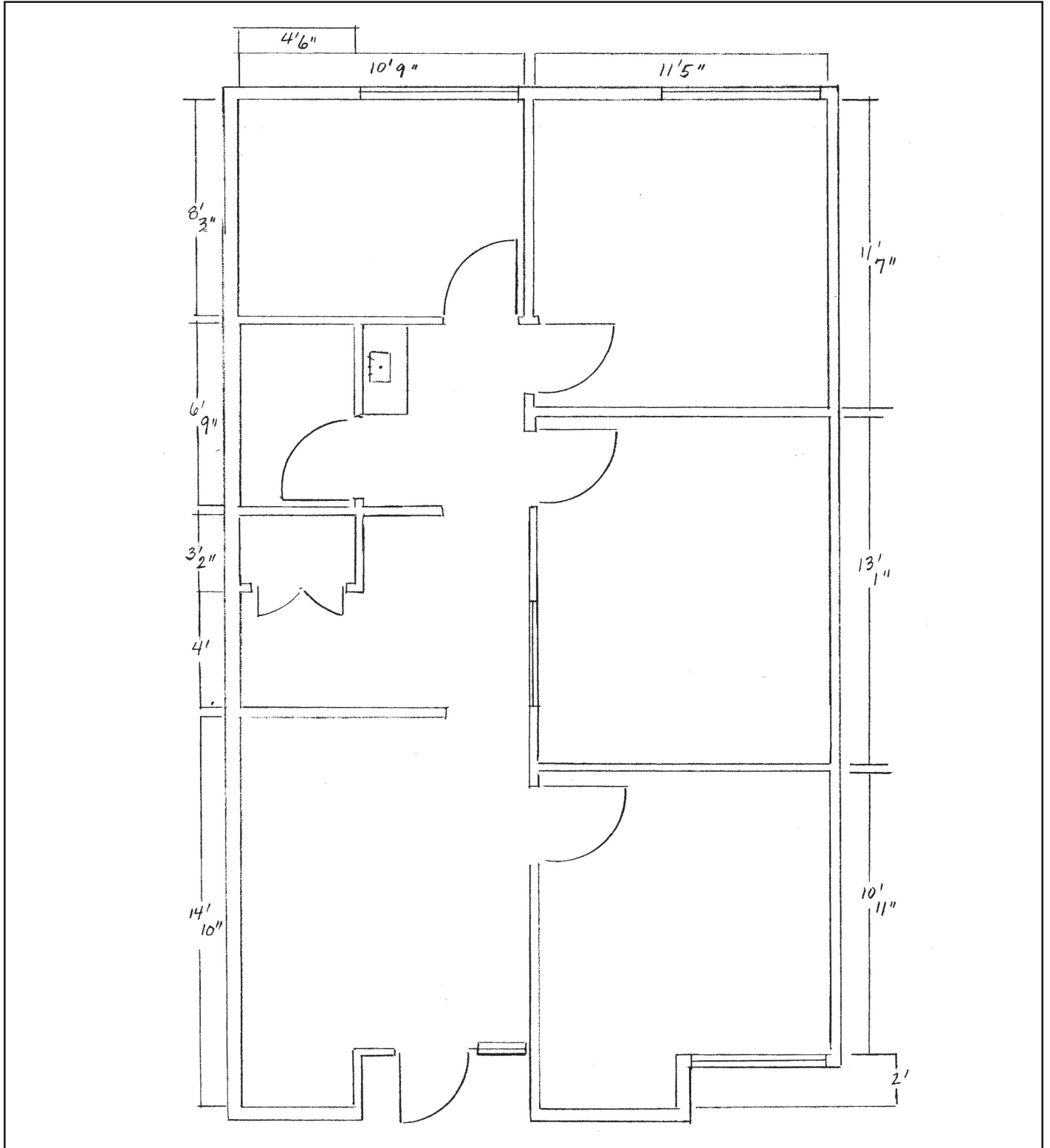


Floor Plan - Suite 201





Floor Plan - Suite 205



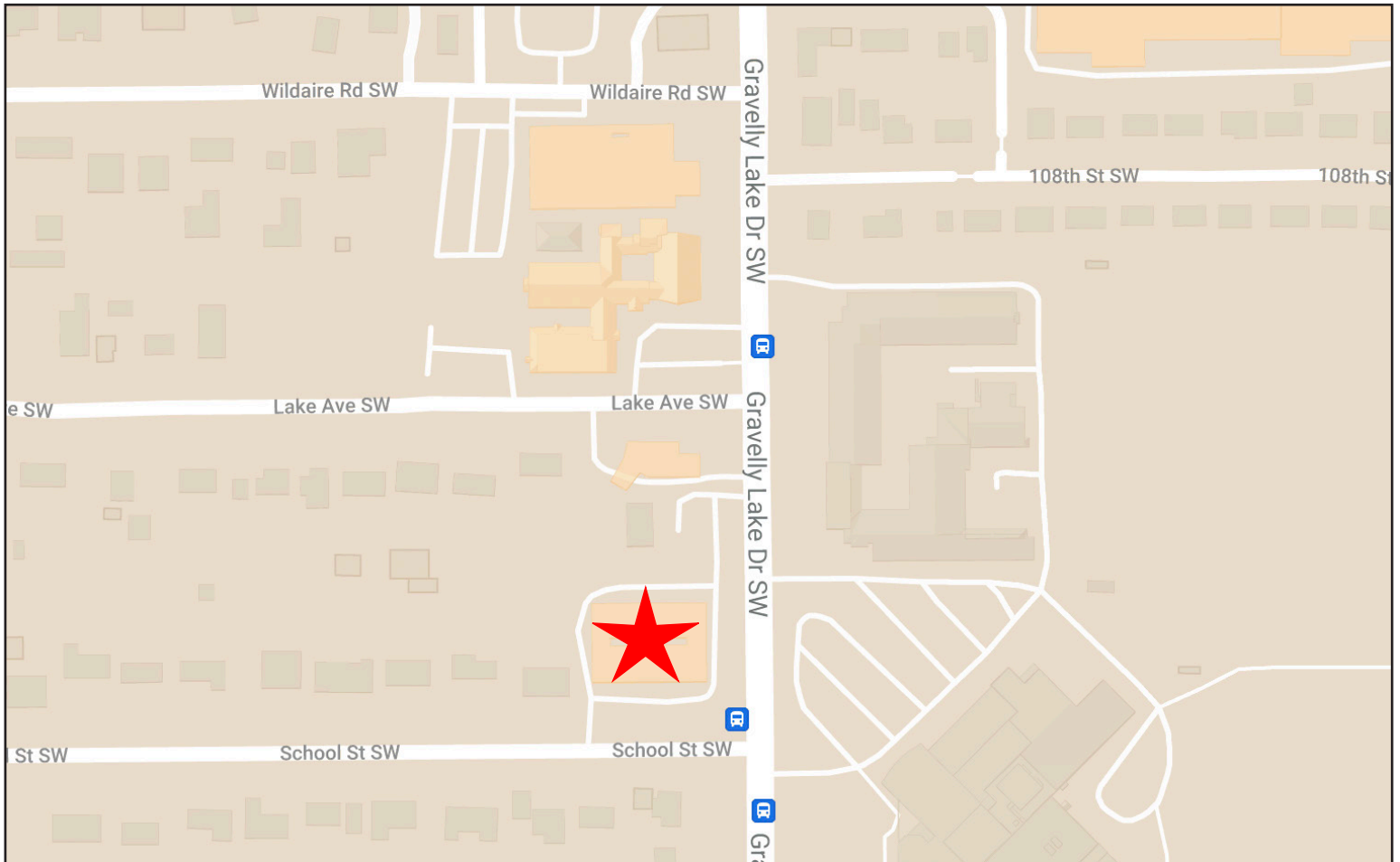


Retail/Office Space Available

REGIONAL MAP



NEIGHBORHOOD MAP



11120 Gravelly Lake Dr SW Ste 2
Lakewood, Washington 98499
johnson-commercial.com

Margot Johnson
margot@johnson-commercial.com
(253) 209-9998