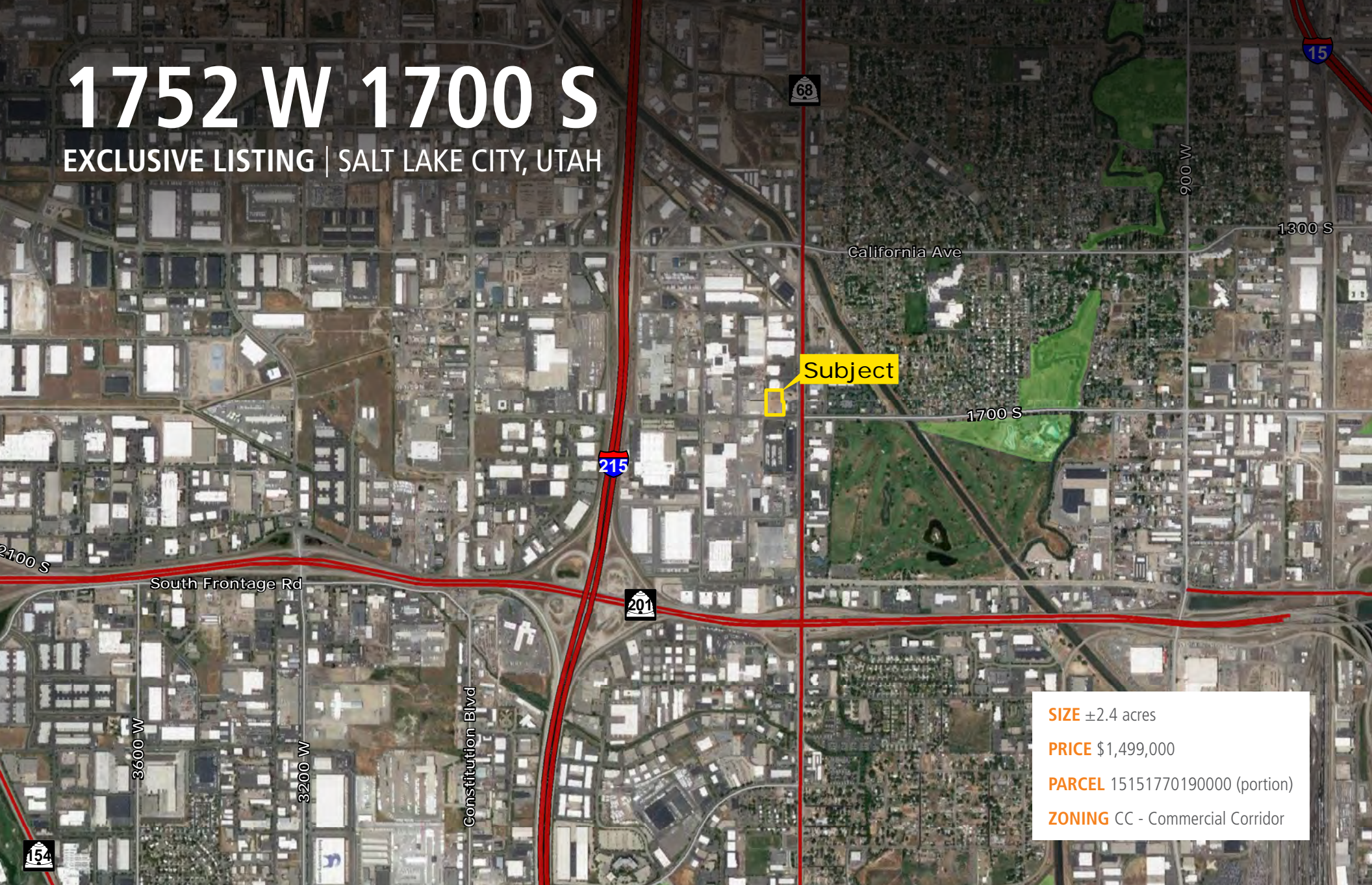


# 1752 W 1700 S

EXCLUSIVE LISTING | SALT LAKE CITY, UTAH



Subject

**SIZE** ±2.4 acres  
**PRICE** \$1,499,000  
**PARCEL** 15151770190000 (portion)  
**ZONING** CC - Commercial Corridor

Zachary Hartman | zhartman@landadvisors.com

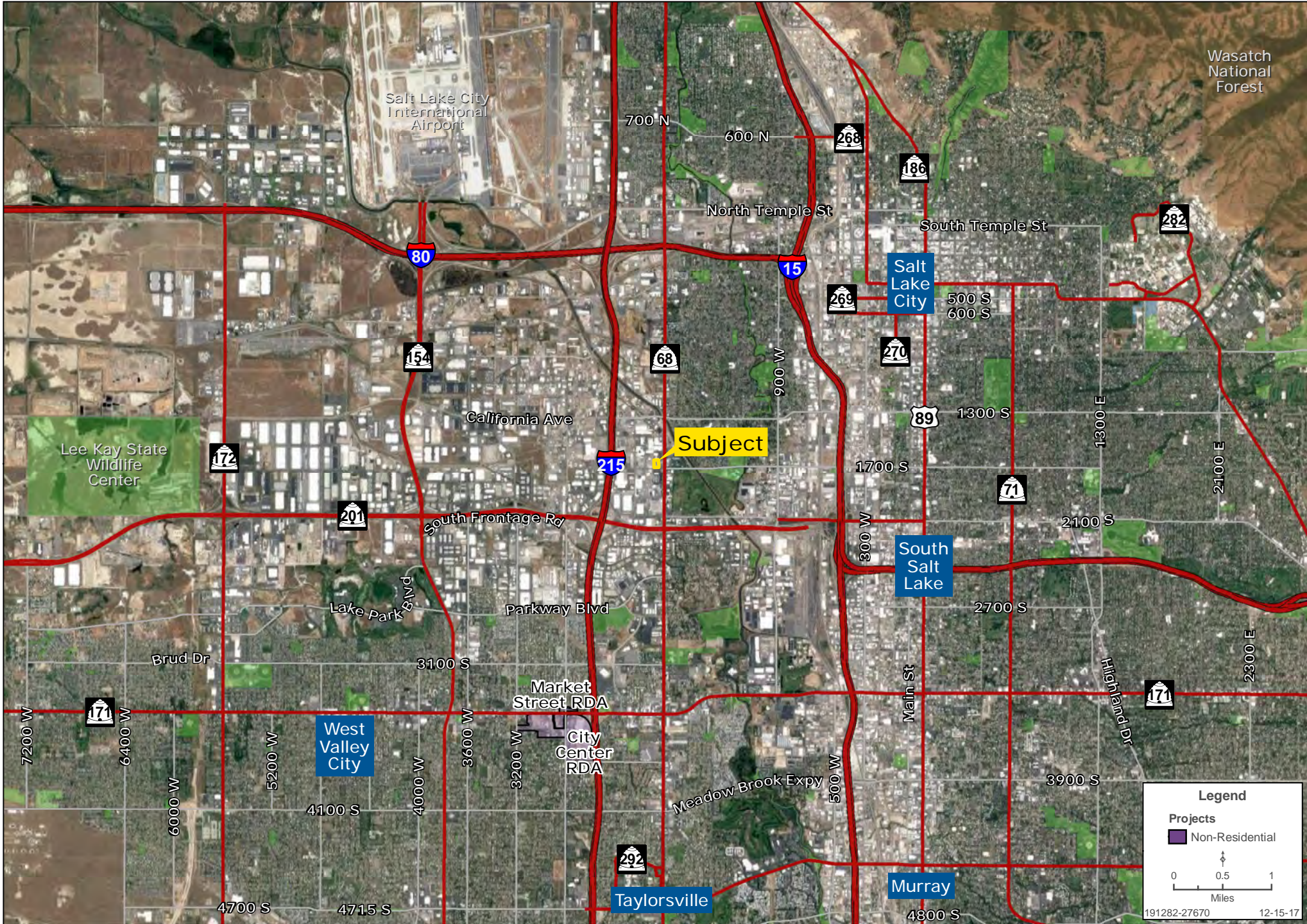
6443 North Business Park Loop Road, Suite 12, Park City, Utah 84098 ph. 801.573.9181 | www.landadvisors.com

The information contained herein is from sources deemed reliable. We have no reason to doubt its accuracy but do not guarantee it. It is the responsibility of the person reviewing this information to independently verify it. This package is subject to change, prior sale or complete withdrawal. UTSaltLake191282 -3.16.18



# 2.4 ACRES 1700 SOUTH SURROUNDING DEVELOPMENT MAP

Zachary Hartman | 435.333.3311 | www.landadvisors.com



# 2.4 ACRES 1700 SOUTH PROPERTY DETAIL MAP

Zachary Hartman | 435.333.3311 | www.landadvisors.com

