

For Lease
±1,200 SF
Three Retail Suites

Available Available

Available



Leesburg Village Shopping Center

2900 Leesburg Road - Columbia, South Carolina

Property Features

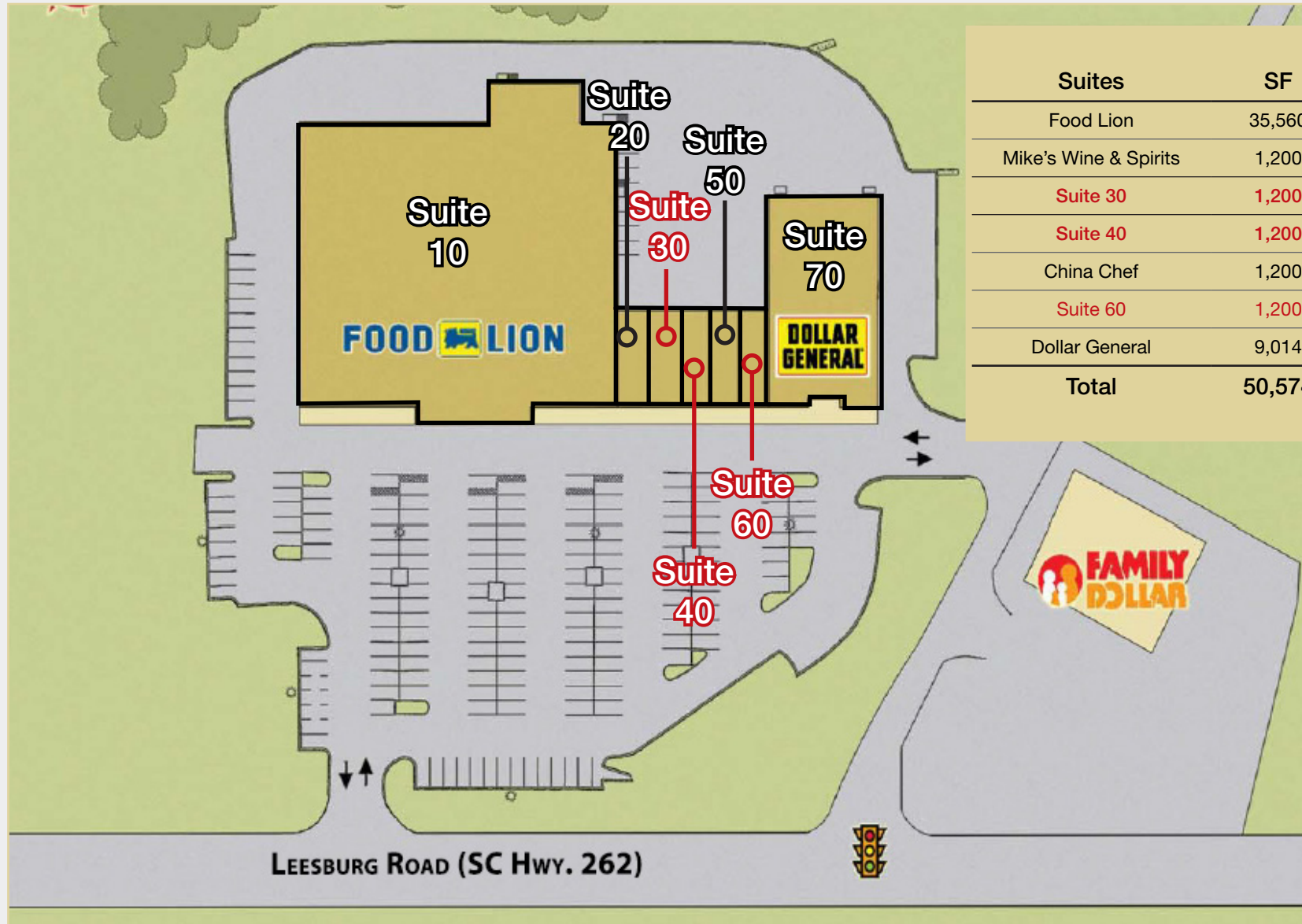
- ±50,574 SF shopping center anchored by a Food Lion
- Three suites available for lease:
 - Suite 30: ±1,200 SF
 - Suite 40: ±1,200 SF
 - Suite 60: ±1,200 SF
- Conveniently located near I-77, Weston Lake, and Fort Jackson
- Lease Rate: \$11.00 per SF, NNN

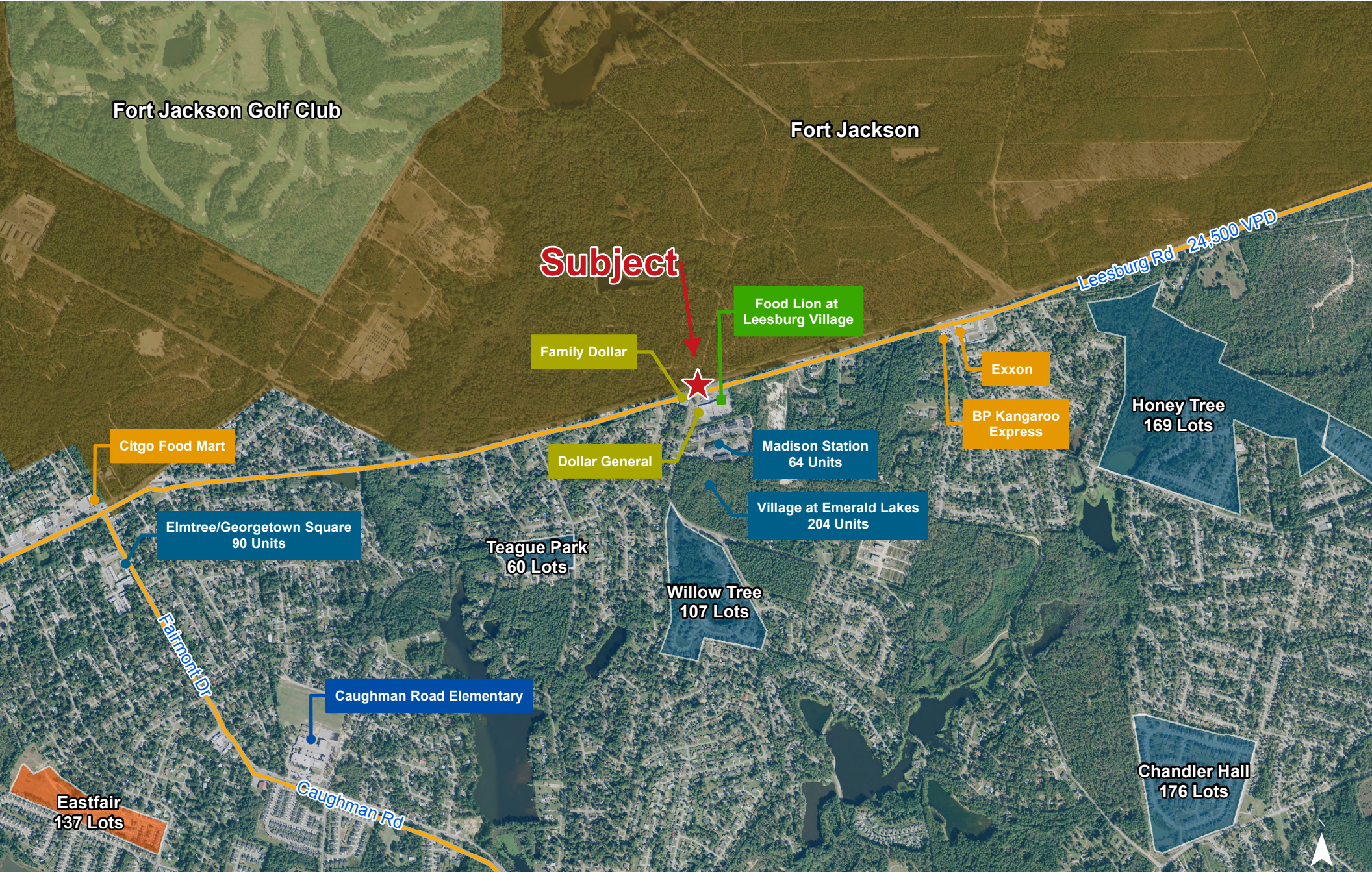


For more information: **Patrick Palmer, CCIM**
+1 803 556 3340
ppalmer@naicolumbia.com

NAIColumbia

807 Gervais Street, Suite 301
Columbia, South Carolina 29201
+1 803.254.0100
www.naicolumbia.com





Map Updated: Monday, March 23, 2015. This information submitted is not guaranteed. Although obtained from reliable sources, all information should be confirmed prior to use or reliance upon the information. This document may not be reproduced in whole or in part without the express written consent of NAI Avant.

NAI Columbia

Demographic Profile

Demographic Profile

2900 Leesburg Road - Columbia, South Carolina

	1 Mile	3 Miles	5 Miles		1 Mile	3 Miles	5 Miles		1 Mile	3 Miles	5 Miles
Population				2018 Age Dist.				Median Household Income			
2010 Census	3,447	27,242	70,248	0 - 4	6.5%	7.0%	5.5%	2018 Estimate	\$55,994	\$51,594	\$54,732
2018 Estimate	3,777	29,571	74,162	5 - 9	7.1%	7.1%	5.5%	2023 Projection	\$61,391	\$57,409	\$61,199
2023 Projection	4,003	31,078	77,030	10 - 14	7.1%	6.6%	5.4%				
% Chg. 2018-2023	6.0%	5.1%	3.9%	15 - 19	6.0%	7.3%	9.2%	Average Household Income			
				20 - 24	5.3%	9.4%	12.8%	2018 Estimate	\$69,428	\$69,943	\$81,584
Households				25 - 34	14.4%	17.3%	17.0%	2023 Projection	\$78,105	\$79,108	\$90,976
2010 Census	1,293	9,997	24,041	35 - 44	11.9%	12.4%	11.4%				
2018 Estimate	1,420	10,943	25,807	45 - 54	12.0%	10.7%	9.9%	Per Capita Household Income			
2023 Projection	1,504	11,536	27,005	55 - 64	14.4%	11.0%	10.8%	2018 Estimate	\$26,810	\$26,934	\$30,948
				65 - 74	9.8%	6.9%	7.5%	2023 Projection	\$30,141	\$30,363	\$34,365
Families				75 - 84	4.5%	3.3%	3.5%				
2010 Census	934	6,727	14,996	85+	1.1%	1.0%	1.4%	2018 Household Income Dist.			
2018 Estimate	1,007	7,189	15,677					Less than \$15,000	7.7%	11.0%	10.3%
2023 Projection	1,058	7,512	16,241	Median Age				\$15,000 - \$24,999	8.4%	8.4%	9.1%
				2010 Census	36.6	30.8	29.9	\$25,000 - \$34,999	9.6%	11.0%	10.2%
2018 Dist. by Race & Ethnicity				2018 Estimate	37.7	32.2	31.5	\$35,000 - \$49,999	16.1%	17.8%	15.9%
White Alone	30.9%	37.8%	51.5%	2023 Projection	38.5	32.4	32.1	\$50,000 - \$74,999	24.5%	19.6%	18.0%
Black Alone	63.3%	54.3%	39.7%					\$75,000 - \$99,999	12.7%	12.6%	12.1%
American Indian Alone	0.2%	0.3%	0.4%	Average Household Size				\$100,000 - \$149,999	16.6%	12.5%	13.1%
Asian Alone	1.8%	2.2%	2.4%	2010 Census	2.66	2.54	2.40	\$150,000 - \$199,999	2.1%	3.6%	4.6%
Pacific Islander Alone	0.2%	0.2%	0.2%	2018 Estimate	2.66	2.53	2.40	\$200,000 and Up	2.3%	3.6%	6.8%
Some Other Race Alone	1.2%	1.8%	2.6%	2023 Projection	2.66	2.53	2.40				
Two or More Races	2.4%	3.3%	3.1%					2018 Business Data			
Hispanic Origin (Any Race)	3.5%	5.6%	7.2%	2018 Housing Data				Total Businesses:	26	588	1,744
				Owner Occ. Housing Units	1,062	6,637	15,332	Total Employees:	128	6,898	22,537
				Renter Occ. Housing Units	358	4,306	10,475				