

# Furnished Palo Alto Office for Sublease

195 Page Mill Road, Ground Floor

Palo Alto, CA



## Property Size: ±2,572 SF

As the exclusive agents, we are pleased to offer the following space:



- ◆ Spaces is Fully Furnished with Desks, Chairs, Conference Room Furniture
- ◆ Kitchen
- ◆ Underground Parking
- ◆ Walking Distance to California Avenue Amenities and Caltrain
- ◆ Short Term Sublease Preferred – 12 months
- ◆ Call to Tour



**Matt Winters** 650.688.8490 [matt.winters@ngkf.com](mailto:matt.winters@ngkf.com) CA RE License #01405284  
**Paul Griffiths** 408.982.8475 [pgriffiths@ngkf.com](mailto:pgriffiths@ngkf.com) CA RE License #01432670

245 Lytton Avenue, Suite 150, Palo Alto, CA 94301

[www.ngkf.com](http://www.ngkf.com)

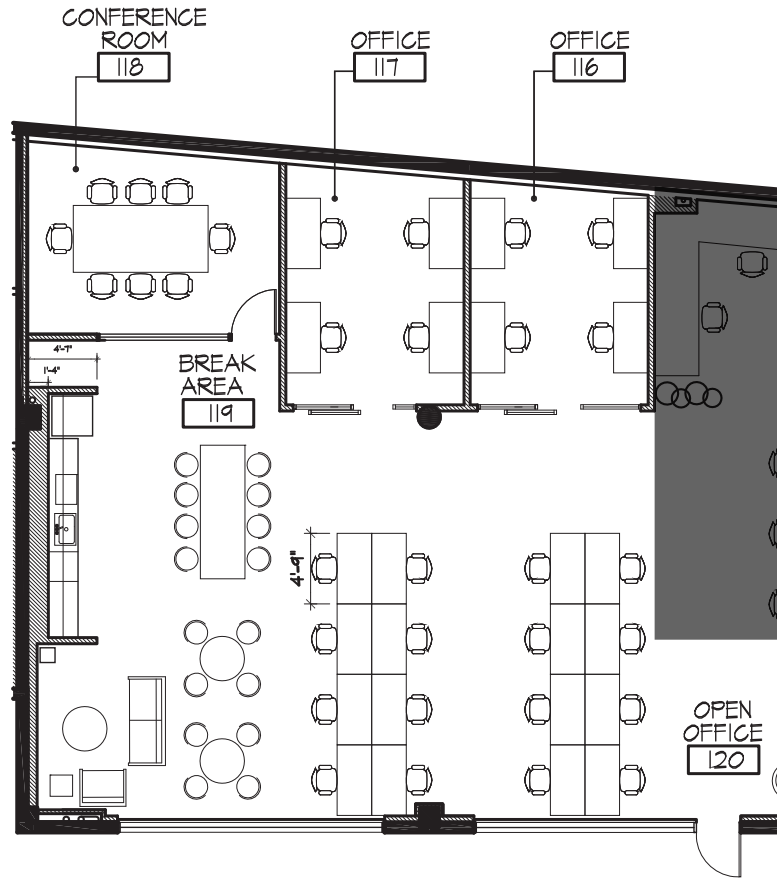
The distributor of this communication is performing acts for which a real estate license is required. The information contained herein has been obtained from sources deemed reliable but has not been verified and no guarantee, warranty or representation, either express or implied, is made with respect to such information. Terms of sale or lease and availability are subject to change or withdrawal without notice.

16-1520 • 10/18

# Furnished Palo Alto Office for Sublease

195 Page Mill Road, Ground Floor

Palo Alto, CA



**Matt Winters** 650.688.8490 [matt.winters@ngkf.com](mailto:matt.winters@ngkf.com) CA RE License #01405284  
**Paul Griffiths** 408.982.8475 [pgriffiths@ngkf.com](mailto:pgriffiths@ngkf.com) CA RE License #01432670

245 Lytton Avenue, Suite 150, Palo Alto, CA 94301

[www.ngkf.com](http://www.ngkf.com)

The distributor of this communication is performing acts for which a real estate license is required. The information contained herein has been obtained from sources deemed reliable but has not been verified and no guarantee, warranty or representation, either express or implied, is made with respect to such information. Terms of sale or lease and availability are subject to change or withdrawal without notice.