

SOUTH MULLEN BUILDING

4701 S 19TH ST | TACOMA, WA

FOR LEASE

2,430 SF
AVAILABLE

OFFICE SPACE FOR LEASE AVAILABLE NOW



LEASE INFO

Suite 100:	2,430 SF
Lease Rate:	\$18.00/SF, NNN
Available:	Now

PROPERTY HIGHLIGHTS

- Great location close to many amenities
- Ample parking
- Located on the bus line
- Excellent access to Hwy-16 and proximity to Allenmore Hospital



CAMERON VALENTINE
253.779.2427
cvalentine@neilwalter.com

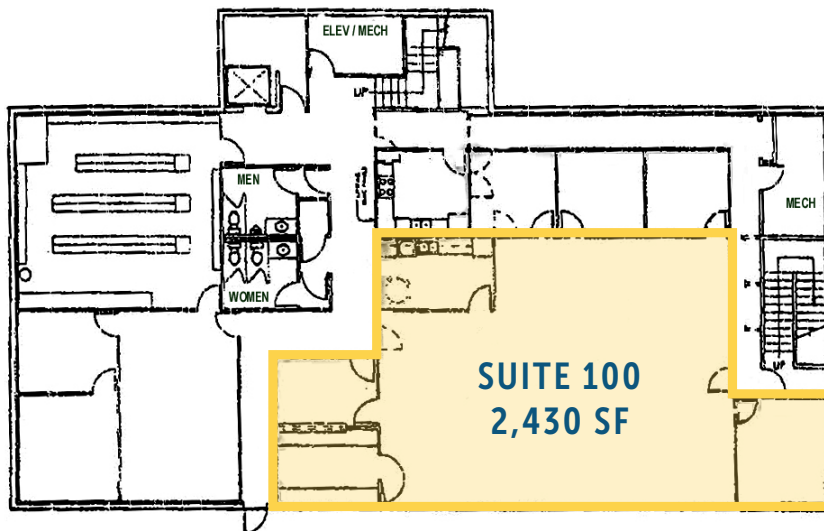
BRUCE VALENTINE
253.779.2400
bvalentine@neilwalter.com

SOUTH MULLEN BUILDING



4701 S 19TH ST | TACOMA, WA

NEIL WALTER
COMPANY



All square footage references are approximate. The information contained herein is from sources deemed reliable. It is provided without representation, warranty or guarantee, expressed or implied as to its accuracy. Prospective Buyer or Tenant should conduct an independent investigation of all matters.

CAMERON VALENTINE
253.779.2427
cvalentine@neilwalter.com

BRUCE VALENTINE
253.779.2400
bvalentine@neilwalter.com

1940 East D St #100
Tacoma, WA 98402
www.neilwalter.com