

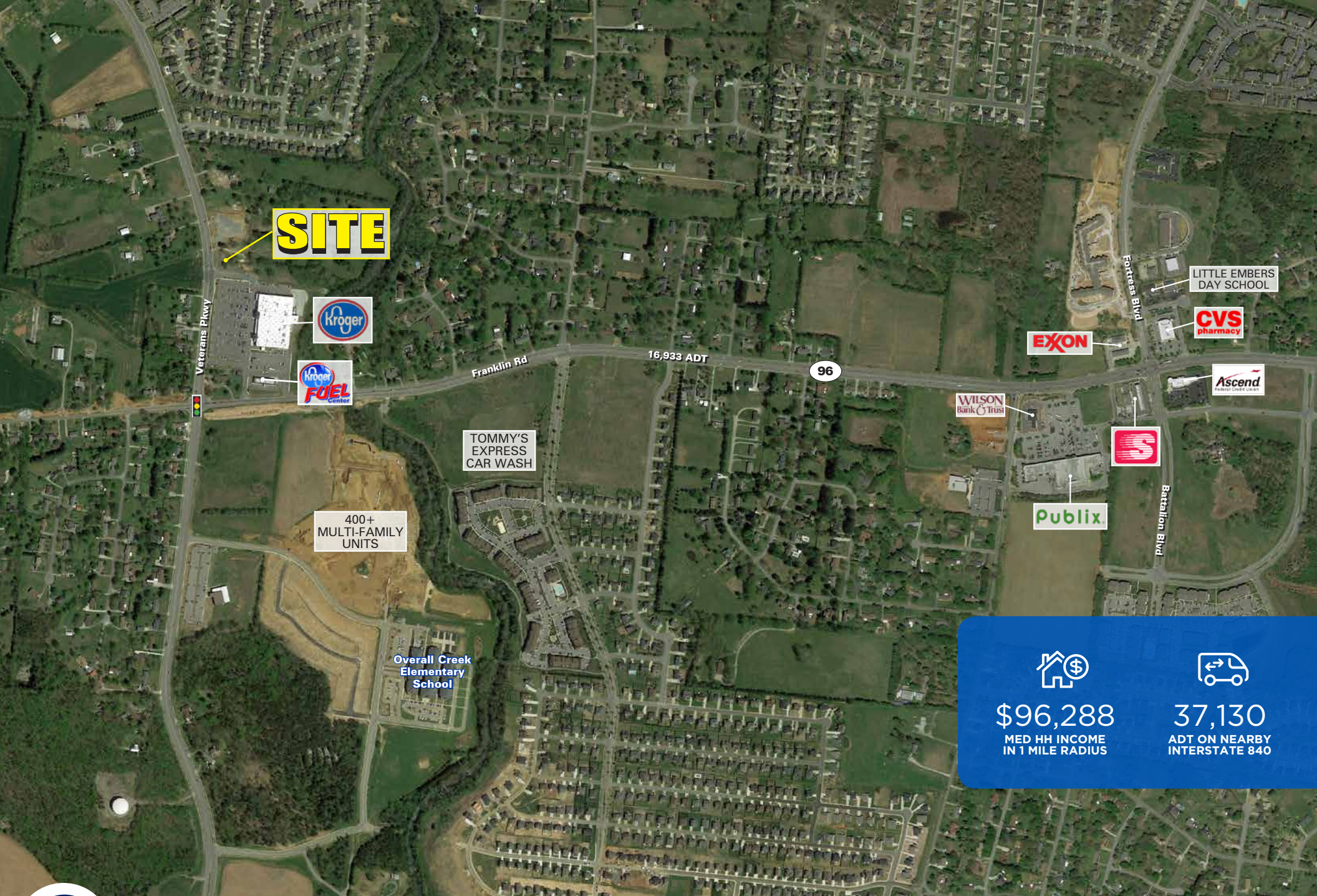
4,875 SF Available

- Excellent opportunity for Retail, Medical or Fast Casual Restaurants
- Site is located at the main entrance to a brand new Kroger
- Adjacent to a new family Dentistry office (Heartland Dental)
- Well located in a high growth area of Murfreesboro

2019 DEMOGRAPHICS	1 MILE	3 MILE	5 MILE
Population	4,185	40,615	72,671
Med HH Income	\$96,288	\$76,810	\$76,959

Robey Spratt
704.697.1901
rspratt@atlanticretail.com

Roy Crain
704.697.1903
rcrain@atlanticretail.com



SITE

Veterans Pkwy

Franklin Rd

16,933 ADT

96

Fortress Blvd

Battalion Blvd

LITTLE EMBERS DAY SCHOOL

CVS pharmacy

EXXON

WILSON Bank & Trust

Ascend Federal Credit Union

TOMMY'S EXPRESS CAR WASH

S

400+ MULTI-FAMILY UNITS

Publix

Overall Creek Elementary School



\$96,288
MED HH INCOME
IN 1 MILE RADIUS



37,130
ADT ON NEARBY
INTERSTATE 840



MURFREESBORO, TENNESSEE
4432 Veterans Parkway

Robey Spratt
704.697.1901
rspratt@atlanticretail.com

Roy Crain
704.697.1903
rcrain@atlanticretail.com

SITE AERIAL

ATLANTICRETAIL.COM



SITE

PLANNED
HEARTLAND

Veterans Pkwy

Franklin Rd



MURFREESBORO, TENNESSEE

4432 Veterans Parkway

BIRD'S EYE

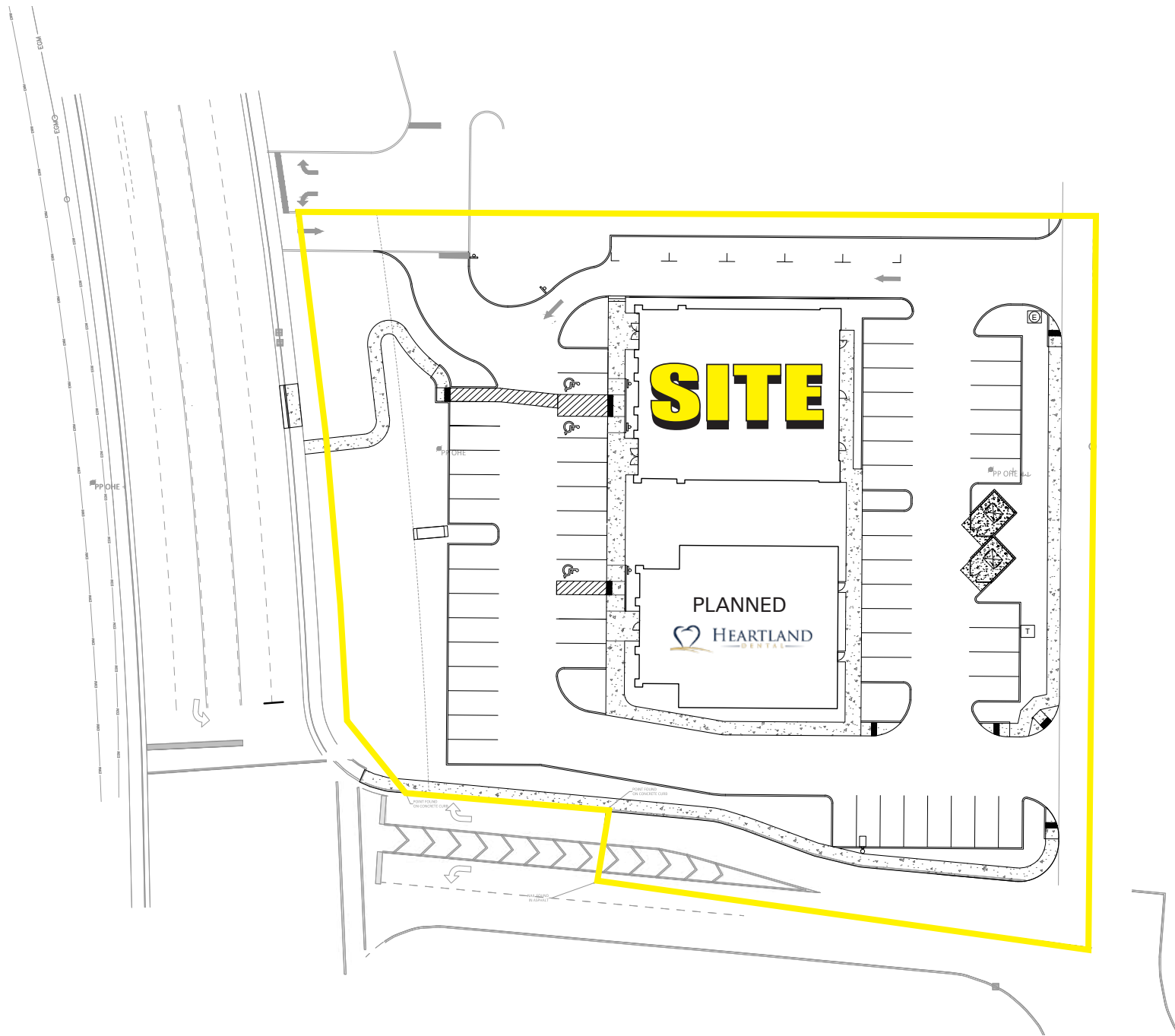
Robey Spratt

704.697.1901
rspratt@atlanticretail.com

Roy Crain

704.697.1903
rcrain@atlanticretail.com

ATLANTICRETAIL.COM



MURFREESBORO, TENNESSEE

4432 Veterans Parkway

SITE PLAN

Robey Spratt

704.697.1901

rspratt@atlanticretail.com

Roy Crain

704.697.1903

rcrain@atlanticretail.com

ATLANTICRETAIL.COM