

FOR LEASE

Highway 101 & Del Guzzi Drive
Port Angeles, WA 98362



OLYMPIC PLAZA

Jamie Firth | Justin Holmes

First Western Properties—Tacoma Inc. | 253.472.0404
6402 Tacoma Mall Blvd, Tacoma, WA 98409 | fwp-inc.com

HIGHWAY 101 & DEL GUZZI DR:

- 1,476 SF \$15.00 PSF PLUS NNN
SPACES CAN BE COMBINED
- 1,487 SF \$15.00 PSF PLUS NNN
- 1,920 SF \$18.00 PSF PLUS NNN
ENDCAP

- Site has great visibility
- Location has great access from Highway 101
- Site is located just 13 miles from Sequim
- Located just minutes from downtown Port Angeles
- Located on a lighted intersection
- Excellent retail/office opportunities
- Large pylon sign available on Highway 101
- Only 2 miles from the Port Angeles ferry landing



Regis - 2020

Population

Average HH Income

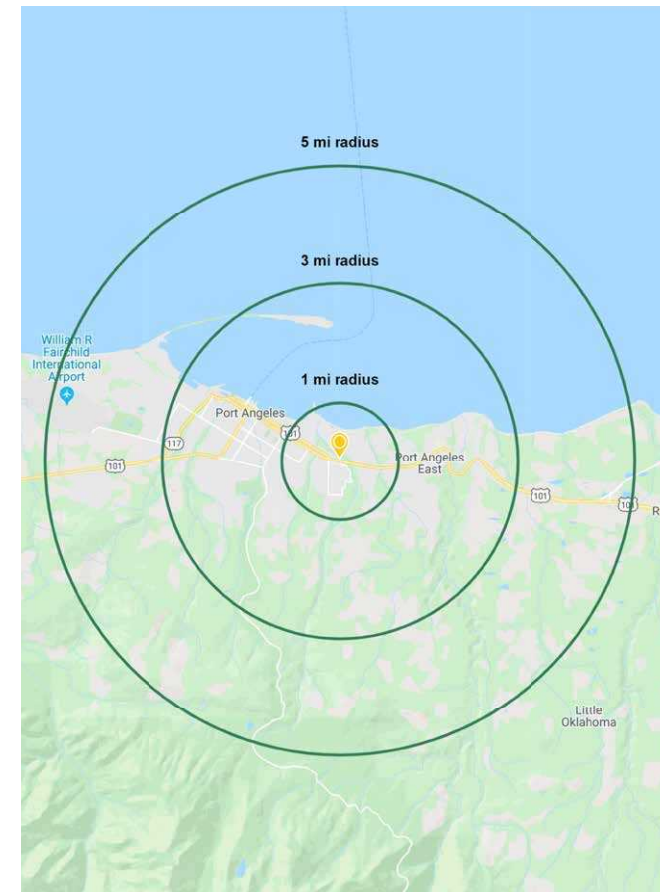
Daytime Population

Mile 1 3,806 \$66,377 4,803

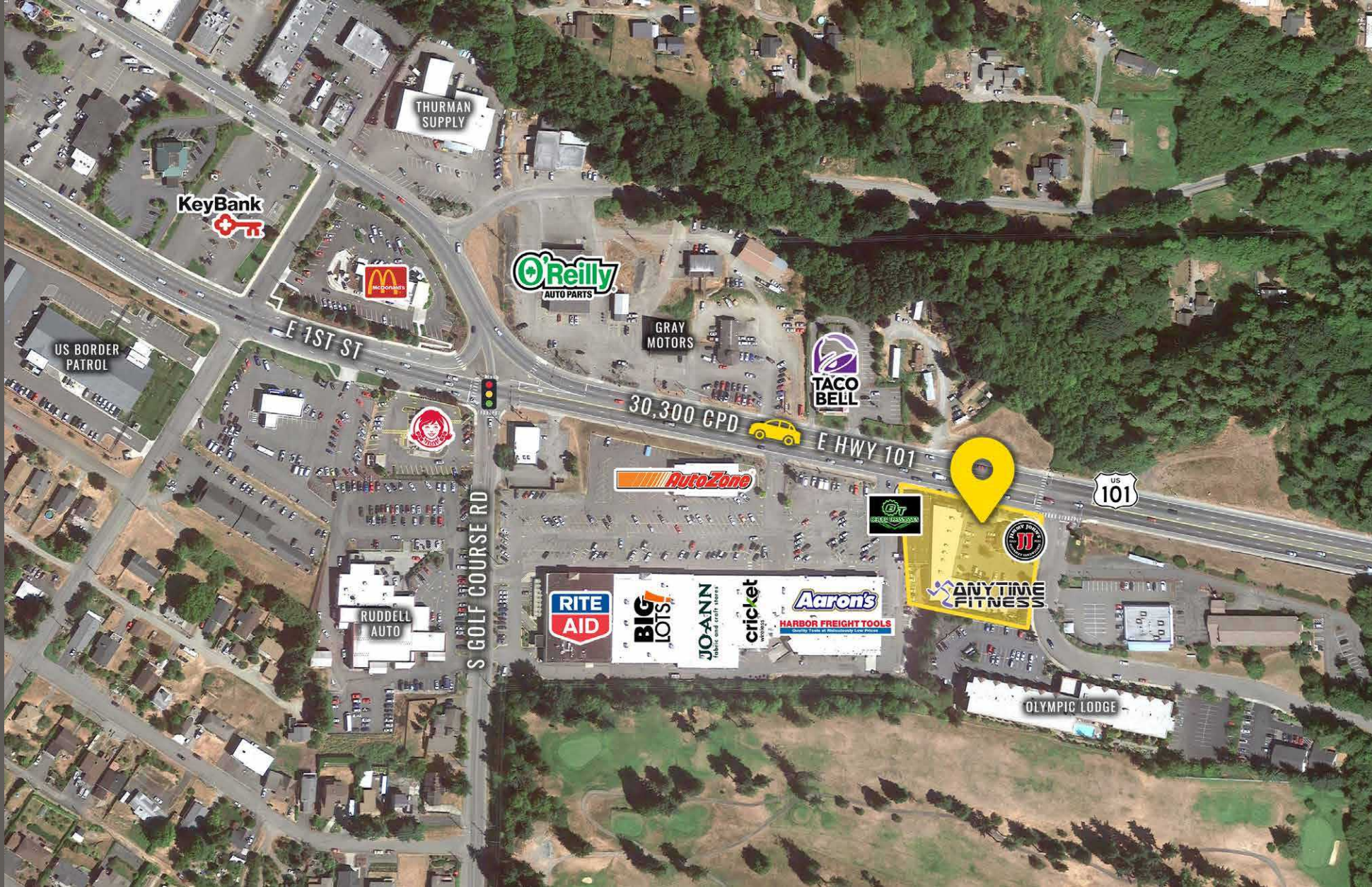
Mile 3 18,990 \$70,055 20,795

Mile 5 29,387 \$70,392 26,881

NEARBY TENANTS



LOCATION DETAILS



Located directly along
HWY 101

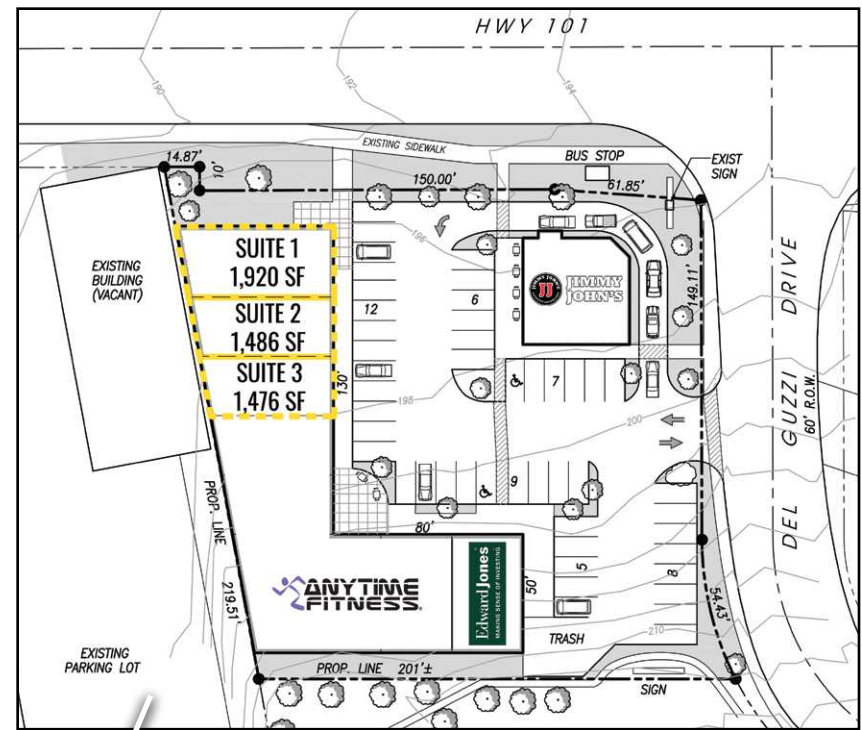


Located moments from
downtown Port Angeles



30,300 CPD
HWY 101

SITE PLAN



TACOMA | KIRKLAND | PORTLAND | SEATTLE



RELATIONSHIP FOCUSED. RESULTS DRIVEN.

JAMIE FIRTH

253.284.3649
jamie@firstwesternproperties.com

JUSTIN HOLMES

253.447.2282
justin@firstwesternproperties.com



First Western Properties—Tacoma Inc. | 253.472.0404
6402 Tacoma Mall Blvd, Tacoma, WA 98409 | fwp-inc.com

© First Western Properties, Inc. DISCLAIMER: The above information has been secured from sources believed to be reliable, however, no representations are made to its accuracy. Prospective tenants or buyers should consult their professional advisors and conduct their own independent investigation. Properties are subject to change in price and/or availability without notice.