

VIDEO TOURS

Uber
STATISTICS

- Base Fare: \$1.05
- Per Minute: \$0.17
- Per Mile: \$0.80
- Cancellation Fee: \$5
- Service Fees: \$2.80
- Minimum Fare: \$6.80



PROPERTY HIGHLIGHTS

- 2,103 SF of prime retail located near the corner of W. 6th St. and W. St. Clair Ave.
- Over 79,000 daytime employees within a one mile radius
- Less than one mile from the FirstEnergy Stadium and Quicken Loans Arena
- Join Taza, Studio Palmieri, Starbucks, Bar Louie, and more!

TRADE AREA DEMOGRAPHICS

	POPULATION	AVG. HH INCOME	DAYTIME EMPLOYEES
1 Mile	13,201	\$78,097	79,326
3 Miles	79,745	\$52,847	148,514
5 Miles	240,262	\$48,298	322,350
5 Minute	107,291	\$51,091	153,987

QUICK LINKS *(click to view)*

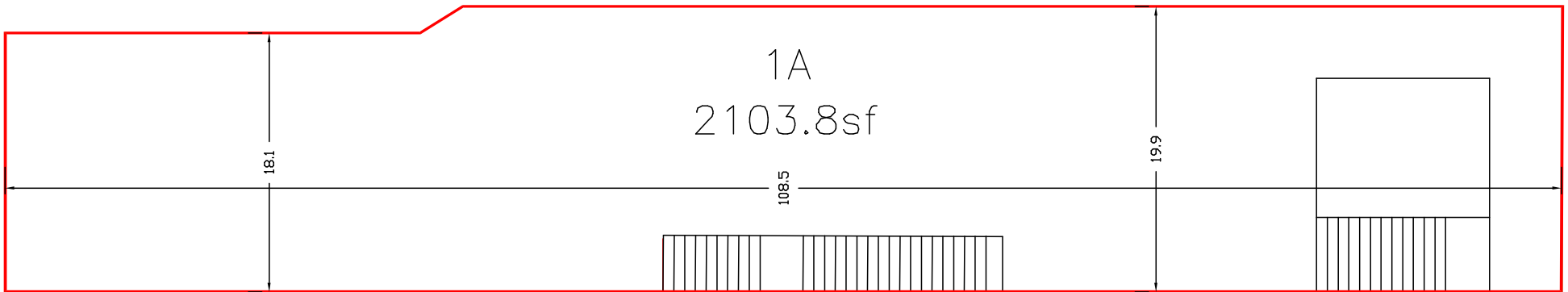
3401 Richmond Rd., Suite 200
Beachwood, OH 44122

www.passovgroup.com

FOR MORE INFORMATION, CONTACT: 216.831.8100

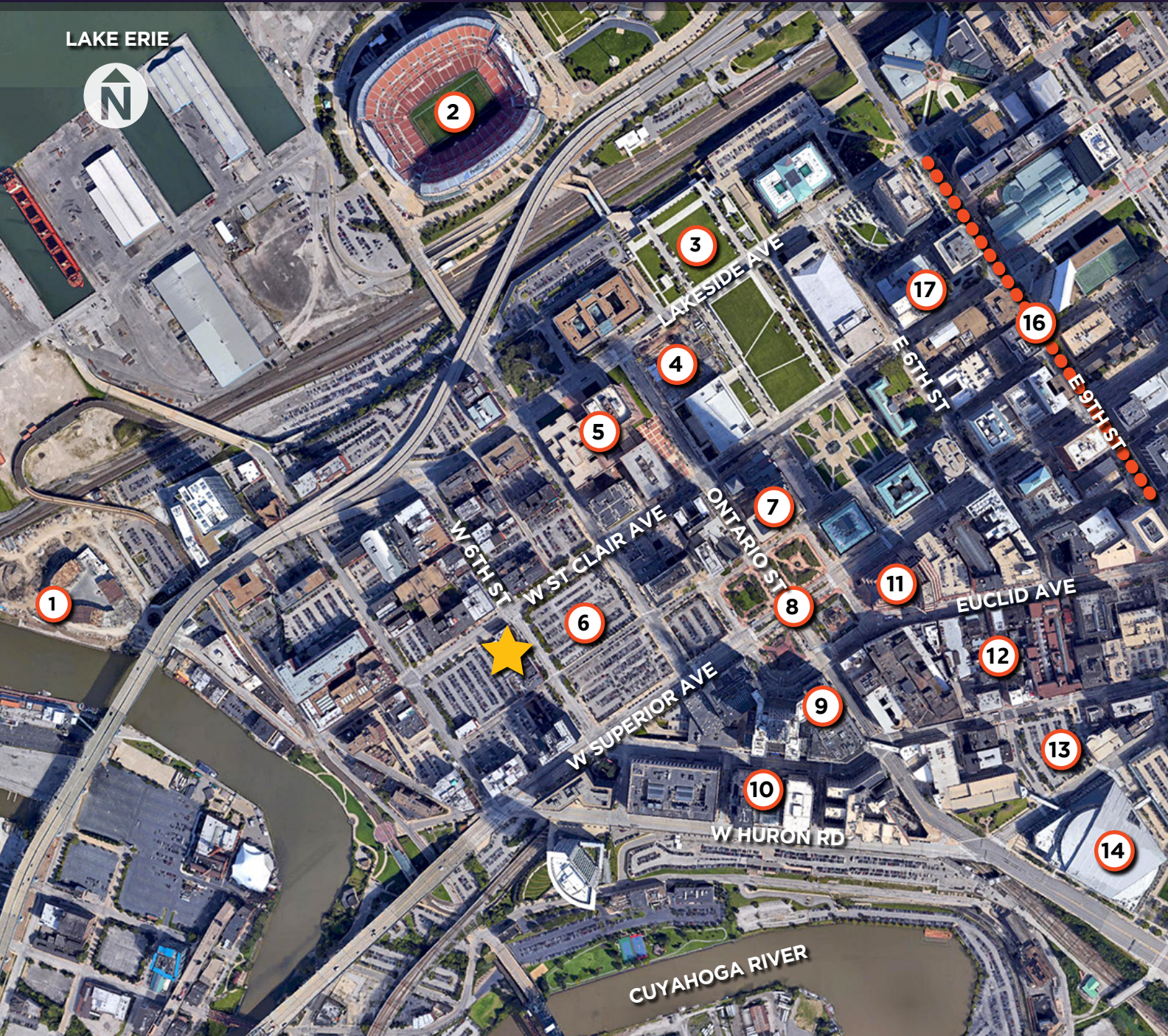
Allison Giomuso / agiomuso@passovgroup.com • Catherine Lueckel / clueckel@passovgroup.com

FIRST FLOOR - FLOOR PLAN



WEST 6TH STREET

LAKE ERIE



CENTRALLY LOCATED IN THE HEART OF DOWNTOWN CLEVELAND, OHIO



- 1. East Bank of the Flats..... 8 Minute Walk
- 2. FirstEnergy Stadium 10 Minute Walk
- 3. Convention Center..... 8 Minute Walk
- 4. The Hilton Hotel..... 6 Minute Walk
- 5. County Common Pleas 5 Minute Walk
- 6. Proposed Mixed Use 3 Minute Walk
- 7. Key Tower..... 6 Minute Walk
- 8. Public Square..... 6 Minute Walk
- 9. The JACK Casino..... 10 Minute Walk
- 10. Tower City 9 Minute Walk
- 11. Huntington Building..... 11 Minute Walk
- 12. East 4th Street..... 12 Minute Walk
- 13. Proposed nuCLEus..... 14 Minute Walk
- 14. Quicken Loans Arena..... 14 Minute Walk
- 15. Progressive Field..... 19 Minute Walk
- 16. E 9th Business District..... 14 Minute Walk
- 17. The Westin Hotel..... 10 Minute Walk



CENTRALLY LOCATED IN THE HEART OF DOWNTOWN CLEVELAND, OHIO

Parking Near 1392 W. 6th St

- 1. Key Tower/Marriott Hotel.....6 minute walk
- 2. W. St. Clair/W. 3rd St.....3 minute walk
- 3. Hilton Cleveland Downtown.....3 minute walk
- 4. 1280 W. 3rd St.....4 minute walk
- 5. W. 3rd St/Lakeside Ave.....4 minute walk
- 6. W. 3rd St/Frankfort Ave.....5 minute walk
- 7. 8159 Knightsbridge Ln4 minute walk
- 8. LAZ Parking - W. 9th St Warehouse District Parking.....3 minute walk
- 9. 850 W. Saint Clair Ave.....3 minute walk

ADCOM BUILDING OPPORTUNITY CLEVELAND, OH

TRADE AERIAL



EAST 4TH STREET

Zocalo, RED, Zava, Duff's, Batches and Brews, Sages, CLEVELAND CLOTHING CO.

PROGRESSIVE FIELD

TOWER CITY CENTER, RENAISSANCE HOTELS & RESORTS, JACK CLEVELAND CASINO, PNC, MORTON'S THE STEAKHOUSE

WESTIN HOTELS & RESORTS, URBAN FARMER

CLEVELAND PUBLIC AUDITORIUM, HUNTINGTON CONVENTION CENTER OF CLEVELAND

Marriott

Hilton, THE BURNHAM, THE LOBBY BAR, THE NOSHERY BAR 32

UPS, Starbucks

wahlburgers

DINO PALMIERI, LAZA A LEBANESE GRILL

Johnny's DOWNTOWN, Johnny's TITTLE BAR

SITE

Verde, UPS, XO

CLEVELAND CHOP, JJ

The information contained herein was obtained from sources believed to be reliable. Passov Real Estate Group makes no guarantees, warranties or representations as to the completeness or accuracy thereof. The presentation of this property is submitted subject to errors, omissions, change of price or condition, prior sale or lease, or withdrawal without notice. All information should be verified prior to purchase or lease.



1392 W 6th St Cleveland, OH 44113		1 mi radius	3 mi radius	5 mi radius	5 min drivetime
POPULATION	2018 Estimated Population	13,201	79,745	240,262	107,291
	2023 Projected Population	12,814	80,503	244,623	109,138
	2010 Census Population	11,177	80,218	246,656	108,418
	2000 Census Population	7,083	85,482	290,365	121,155
	Projected Annual Growth 2018 to 2023	-0.6%	0.2%	0.4%	0.3%
	Historical Annual Growth 2000 to 2018	4.8%	-0.4%	-1.0%	-0.6%
	2018 Median Age	33.8	32.3	34.3	32.7
HOUSEHOLDS	2018 Estimated Households	7,098	35,136	108,253	47,434
	2023 Projected Households	6,902	35,715	111,014	48,605
	2010 Census Households	5,182	32,544	104,149	44,433
	2000 Census Households	3,103	32,434	116,138	46,660
	Projected Annual Growth 2018 to 2023	-0.6%	0.3%	0.5%	0.5%
	Historical Annual Growth 2000 to 2018	7.2%	0.5%	-0.4%	0.1%
	2018 Estimated White	43.4%	41.5%	44.9%	41.3%
2018 Estimated Black or African American	46.3%	39.8%	41.1%	40.9%	
2018 Estimated Asian or Pacific Islander	5.9%	4.3%	2.9%	3.6%	
2018 Estimated American Indian or Native Alaskan	0.2%	0.5%	0.4%	0.5%	
2018 Estimated Other Races	4.2%	13.9%	10.7%	13.7%	
2018 Estimated Hispanic	5.5%	21.5%	15.7%	20.9%	
INCOME	2018 Estimated Average Household Income	\$78,097	\$52,847	\$48,298	\$51,091
	2018 Estimated Median Household Income	\$39,952	\$31,809	\$31,822	\$30,811
	2018 Estimated Per Capita Income	\$45,616	\$24,421	\$22,234	\$23,458
EDUCATION (AGE 25+)	2018 Estimated Elementary (Grade Level 0 to 8)	3.4%	6.9%	5.6%	6.7%
	2018 Estimated Some High School (Grade Level 9 to 11)	12.3%	16.3%	14.9%	16.3%
	2018 Estimated High School Graduate	19.6%	26.7%	30.7%	28.4%
	2018 Estimated Some College	17.5%	19.8%	22.2%	20.4%
	2018 Estimated Associates Degree Only	3.5%	5.3%	6.3%	5.6%
	2018 Estimated Bachelors Degree Only	23.3%	14.2%	12.6%	13.0%
	2018 Estimated Graduate Degree	20.3%	10.8%	7.7%	9.6%
BUSINESS	2018 Estimated Total Businesses	3,999	8,267	14,479	8,943
	2018 Estimated Total Employees	79,326	148,514	322,350	153,987
	2018 Estimated Employee Population per Business	19.8	18.0	22.3	17.2
	2018 Estimated Residential Population per Business	3.3	9.6	16.6	12.0

RS1

Map data



FOR MORE INFORMATION, CONTACT: 216.831.8100

Allison Giomuso / agiomuso@passovgroup.com • Catherine Lueckel / clueckel@passovgroup.com

The information contained herein was obtained from sources believed to be reliable. Passov Real Estate Group makes no guarantees, warranties or representations as to the completeness or accuracy thereof. The presentation of this property is submitted subject to errors, omissions, change of price or condition, prior sale or lease, or withdrawal without notice. All information should be verified prior to purchase or lease.