



AMERICAN TOWERS OFFICE SPACE FOR LEASE

48 WEST BROADWAY (300 SOUTH), SALT LAKE CITY 84101



Property Information

- 2,000 RSF - 10,825 RSF Office Available
- Newly Remodeled Common Areas & Lobby
- Covered On Site Parking Available *
- Excellent Views of Downtown
- Walking Distance to TRAX Station
- Easy Access to I-15

Demographics

	1 Mile	3 Mile	5 Mile
Population	18,080	148,815	240,698
Households	14,270	61,056	93,813
Avg. Household Income	\$71,062	\$81,146	\$87,078

Traffic Counts

West Temple: 31,752 Annual Average Daily Traffic

1300 South: 12,161 Annual Average Daily Traffic

LEASE RATE : \$25.00/SF YEAR FULL SERVICE

DEREK KLOPFER

801.617.1700

COLTER SMITH

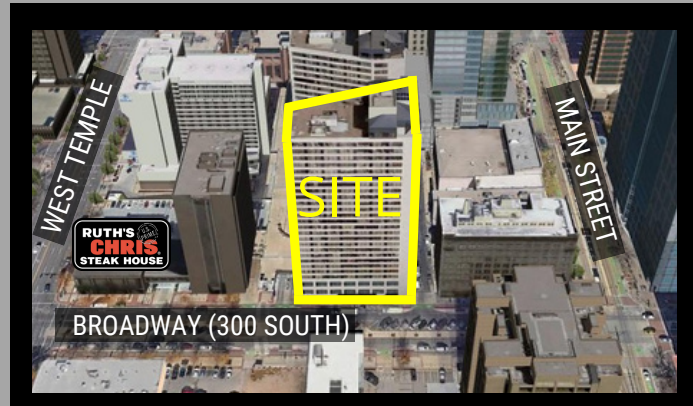
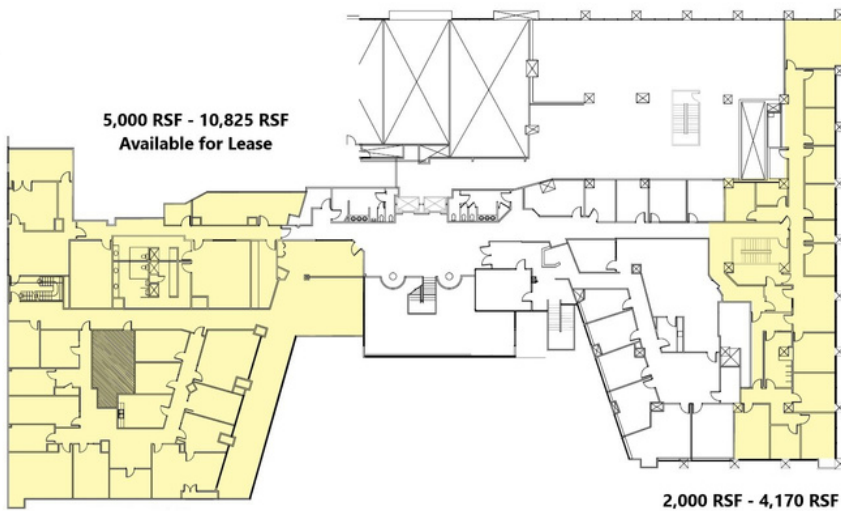
derek.klopfers@crcnationwide.com

colter.smith@crcnationwide.com



AMERICAN TOWERS OFFICE SPACE FOR LEASE

48 WEST BROADWAY (300 SOUTH), SALT LAKE CITY 84101



This information is given with the understanding that all negotiations and/or real estate activity related to the property described above shall be conducted through this cRc Nationwide office. The above information while not guaranteed, was obtained from sources we believe to be reliable.

DEREK KLOPFER

801.617.1700

COLTER SMITH

derek.klopfers@crcnationwide.com

colter.smith@crcnationwide.com