

REDUCED RATE

GIBRALTAR TOWER

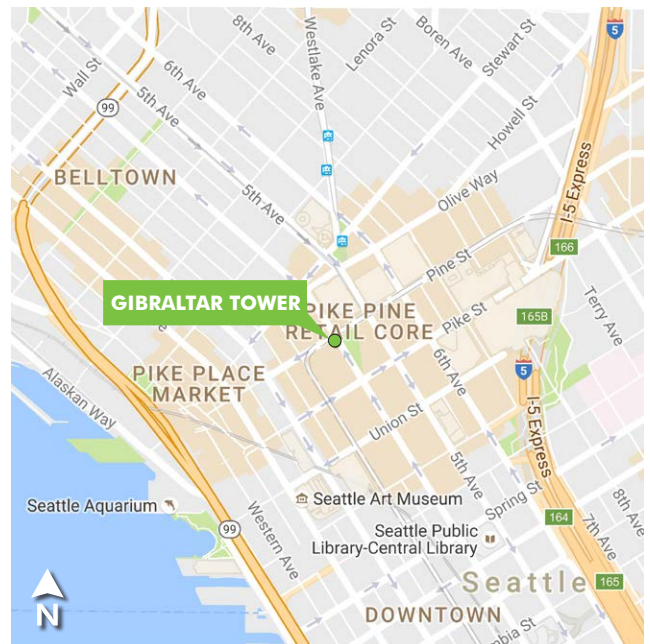
1525
FOURTH AVENUE

Seattle, WA 98101



BUILDING FEATURES

- + Asking rate \$36.00 FSG/monthly; fully serviced
- + Suite 401: ±1,312 RSF w/ conference room
- + ±1,080 RSF w/o conference room
- + TI's negotiable
- + Abundant natural light
- + Private exterior deck
- + Exposed ceiling
- + Creative space
- + Core CBD location
- + Fantastic retail amenities
- + Mass transit at the front door



CONTACT US

DAN STUTZ
+1 206 292 6097
dan.stutz@cbre.com

EVAN STEINRUCK
+1 206 292 6022
evan.steinruck@cbre.com

CBRE, Inc.
1420 Fifth Avenue, Suite 1700
Seattle, WA 98101

www.cbre.us/seattle

CBRE

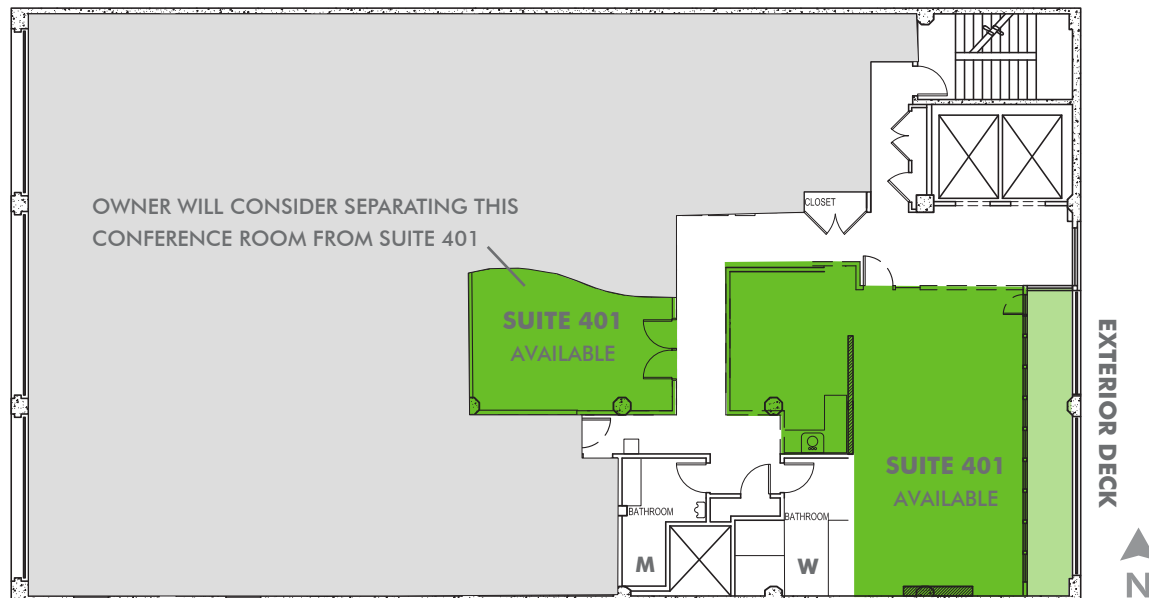
OFFICE SPACE FOR LEASE GIBRALTAR TOWER

1525
FOURTH AVENUE
Seattle, WA 98101



FLOOR PLAN

SUITE 401 | 1,312 TOTAL RSF W/ CONFERENCE ROOM
±1,080 RSF W/O CONFERENCE ROOM
\$3,936/MONTH YEAR 1 RENTAL RATE W/ CONFERENCE ROOM
\$3,240/MONTH YEAR 1 RENTAL RATE W/O CONFERENCE ROOM



© 2019 CBRE, Inc. All rights reserved. This information has been obtained from sources believed reliable, but has not been verified for accuracy or completeness. You should conduct a careful, independent investigation of the property and verify all information. Any reliance on this information is solely at your own risk. CBRE and the CBRE logo are service marks of CBRE, Inc. All other marks displayed on this document are the property of their respective owners. Photos herein are the property of their respective owners. Use of these images without the express written consent of the owner is prohibited. amf 042619