



MEDICAL &/OR OFFICE SUITE FOR LEASE

FOOTHILLS PKWY & CHESSER DR / RIGHT OFF HWY 280 NEXT TO DOMINO'S

109 Foothills Pkwy-Chelsea, AL 35043



Suite 103-109 is approx. 4,800± SF and leases for \$4,600/mo rent plus utilities
Ideal for a medical and/or office user

Ponder Properties CRE is NOW

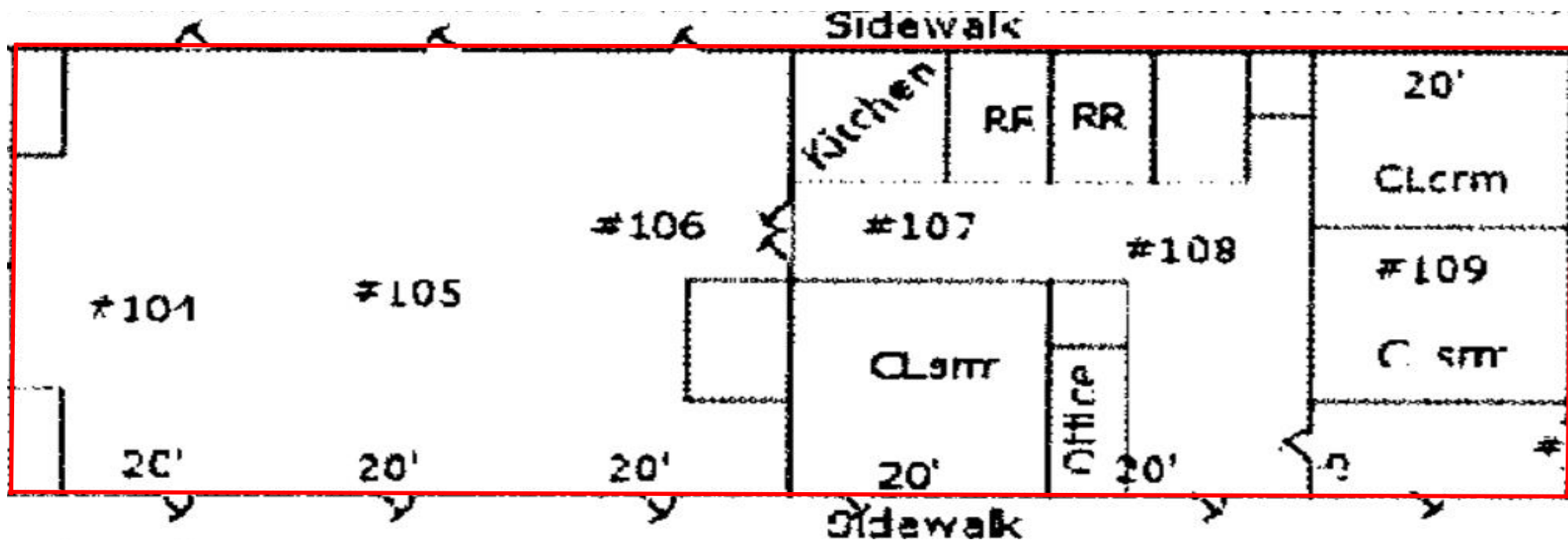


Randy Thomas Glenn Ponder Pg 1 of 3
(205)229-5417 (205)356-9884 R041321CC

NO WARRANTY OR REPRESENTATION, EXPRESS OR IMPLIED IS MADE TO THE ACCURACY OF THE INFORMATION CONTAINED HEREIN, AND THE SAME IS SUBMITTED SUBJECT TO ERRORS, OMISSIONS, CHANGE OF PRICE, RENTAL OR OTHER CONDITIONS, PROR SALE, LEASE OR FINANCING, OR WITHDRAWAL WITH OUT NOTICE, AND OF ANY SPECIAL LISTING CONDITIONS IMPOSED BY OUR PRINCIPLES NO WARRANTIES OR REPRESENTATIONS ARE MADE AS TO THE CONDITION OF THE PROPERTY OR ANY HAZARDS CONTAINED THEREIN ARE ANY TO BE IMPLD.

MEDICAL &/OR OFFICE SUITE FOR LEASE

FOOTHILLS PKWY & CHESSER DR / RIGHT OFF HWY 280 NEXT TO DOMINO'S



Suite 103-109 is approx. 4,800± SF and leases for \$4,600/mo rent plus utilities

Ideal for an medical and/or office user

Not possible to split up—Call for your showing

MEDICAL &/OR OFFICE SUITE FOR LEASE

FOOTHILLS PKWY & CHESSER DR / RIGHT OFF HWY 280 NEXT TO DOMINO'S



Ponder Properties CRE is NOW