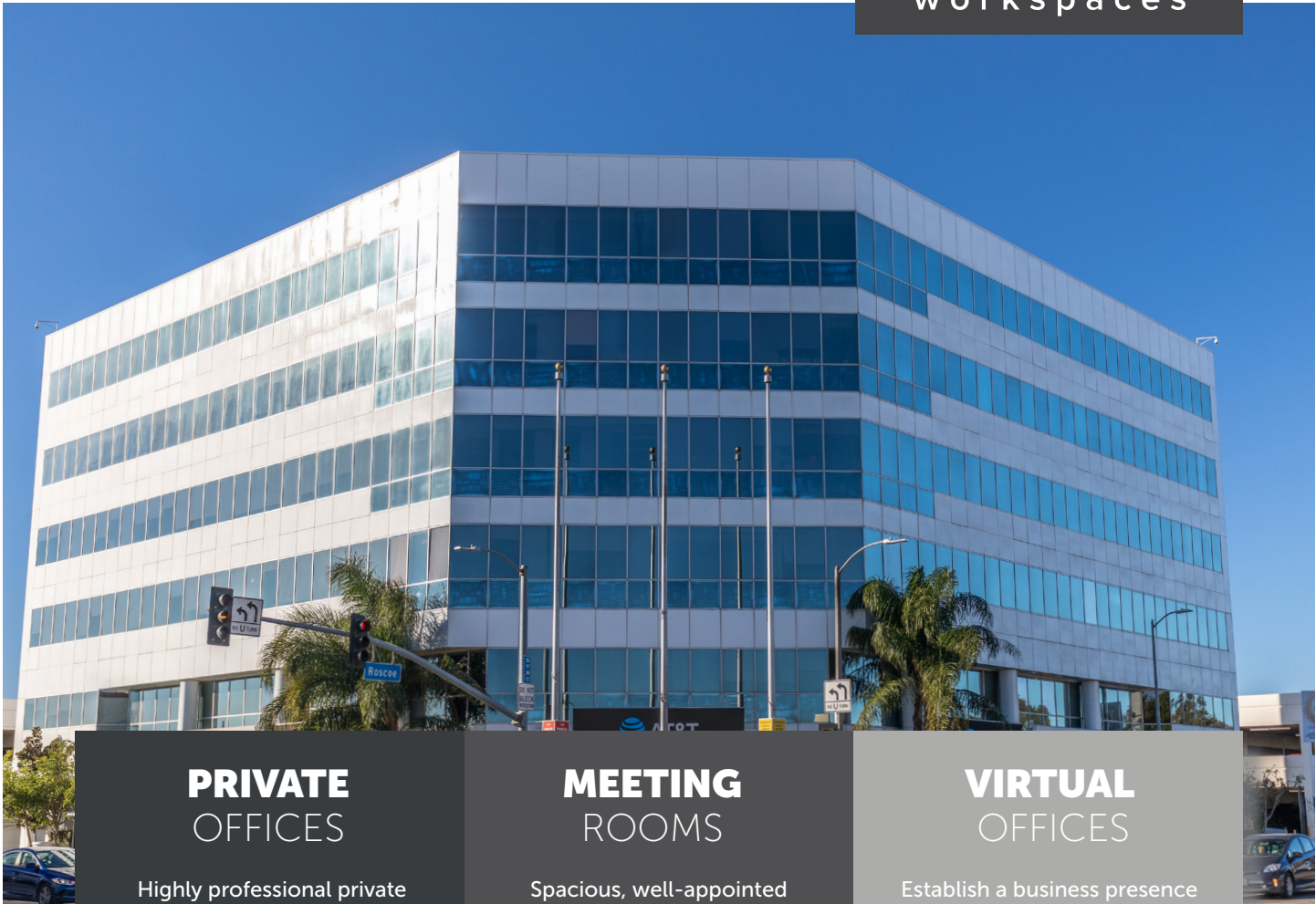


Panorama City

14500 Roscoe Blvd, 4th Floor, Panorama City, CA 91402



PRIVATE OFFICES

Highly professional private offices for individuals and teams that are flexible and scaled for growth.

MEETING ROOMS

Spacious, well-appointed meeting rooms with on-site administrative support. Available for an hour, day or longer.

VIRTUAL OFFICES

Establish a business presence with mail handling, phone answering or meeting room time.

ABOUT THIS LOCATION

The Valley Gateway Building is centrally located near the intersection of Roscoe Boulevard and Van Nuys Boulevard, providing a high level of exposure. Enjoy the view from a well-appointed office or nearby shops and restaurants. It's also moments away from the Van Nuys Courthouse West and other amenities.

CONTACT US

Let's touch base! Contact the on-site General Manager at 818-714-2000 or PANmanager@premierworkspaces.com to schedule a tour.



PREMIER AMENITIES

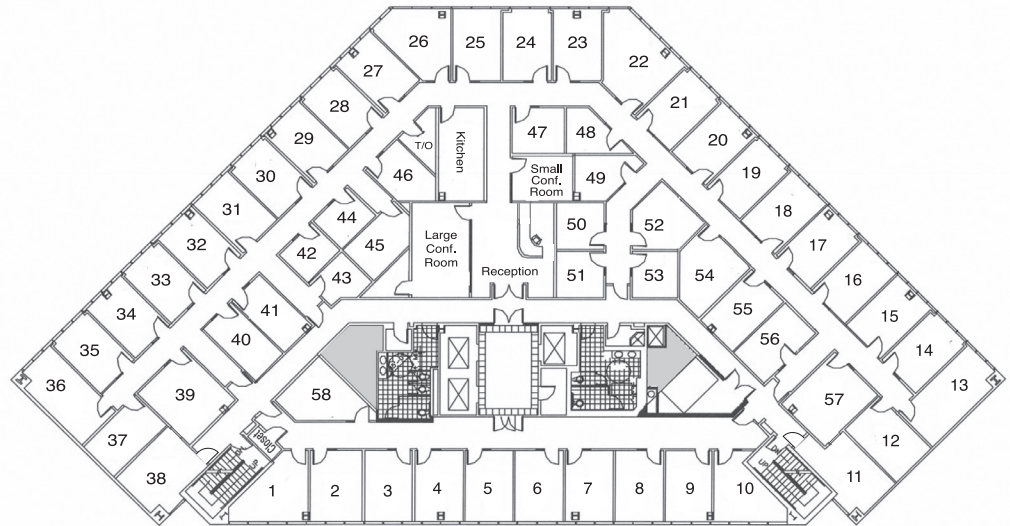
Our private suites can be easily customized to fit your desired aesthetic and brand.

- Private Offices
- Team Rooms
- High Speed Internet
- Telephone Answering
- Mail Collection
- Equipped Kitchen
- Day Offices
- Meeting Rooms
- Daily Janitorial

PREMIER DIFFERENCE

We've been perfecting the professional workspace for over 17 years.

- Highly-Professional Atmosphere
- On-Site Manager & Support Staff
- Scalable Solutions for Individuals and Teams
- On-Site Billing
- 90+ Locations Nationwide



NEARBY AMENITIES

Panorama City is centrally located in the San Fernando Valley. It features the highest population density in the Valley, making it a popular destination for growing businesses.

Nearby Amenities:

- 24 Hour Fitness
- Dignity Health, Northridge
- California State University Northridge
- Mission Community Hospital
- The Plant Shopping Center
- Valley Presbyterian Hospital
- Van Nuys Courthouse West
- US Census Bureau

Nearby Transit:

- Freeways – 405, 101, 118, 170
- Hollywood Burbank Airport (BUR)

CONTACT US

Let's touch base! Contact the on-site General Manager at 818-714-2000 or PANmanager@premierworkspaces.com to schedule a tour.