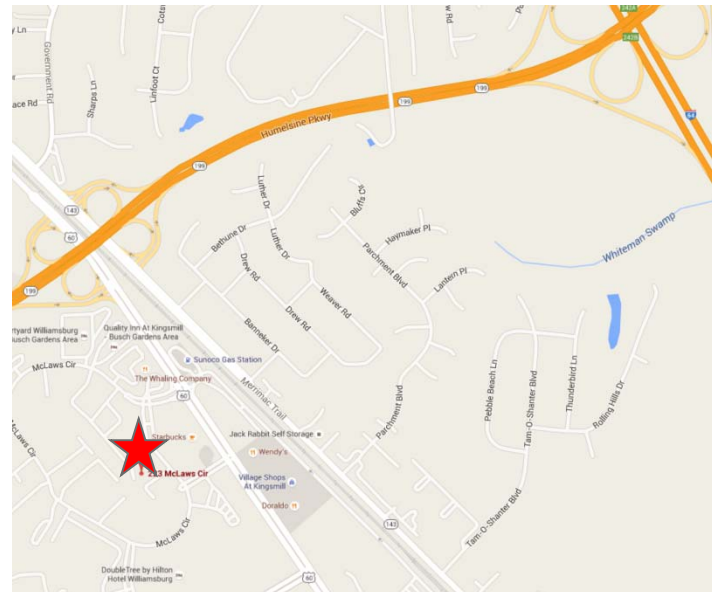




Property Features

- 1,692 ± SF first floor space and 864 SF mezzanine space
- Sale Price: \$255,000
- Excellent professional/medical office opportunity
- Located in the Quarterland Commons section of Busch Corporate Center; built in 1992
- Parking ratio 5:1,000 sf
- Busch Corporate Center is a mix of office, limited business, and light industrial uses. It is centrally located at the intersection of Rt. 60 & Rt. 199
- Located 1 mile from I-64
- Zoned M-1



For more information, contact:

DAWN GRIGGS, SIOR
First Vice President
757 873 1210
dawn.griggs@thalhimer.com

One BayPort Way, Suite 100
Newport News, VA 23606
www.thalhimer.com

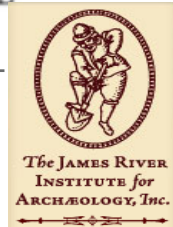
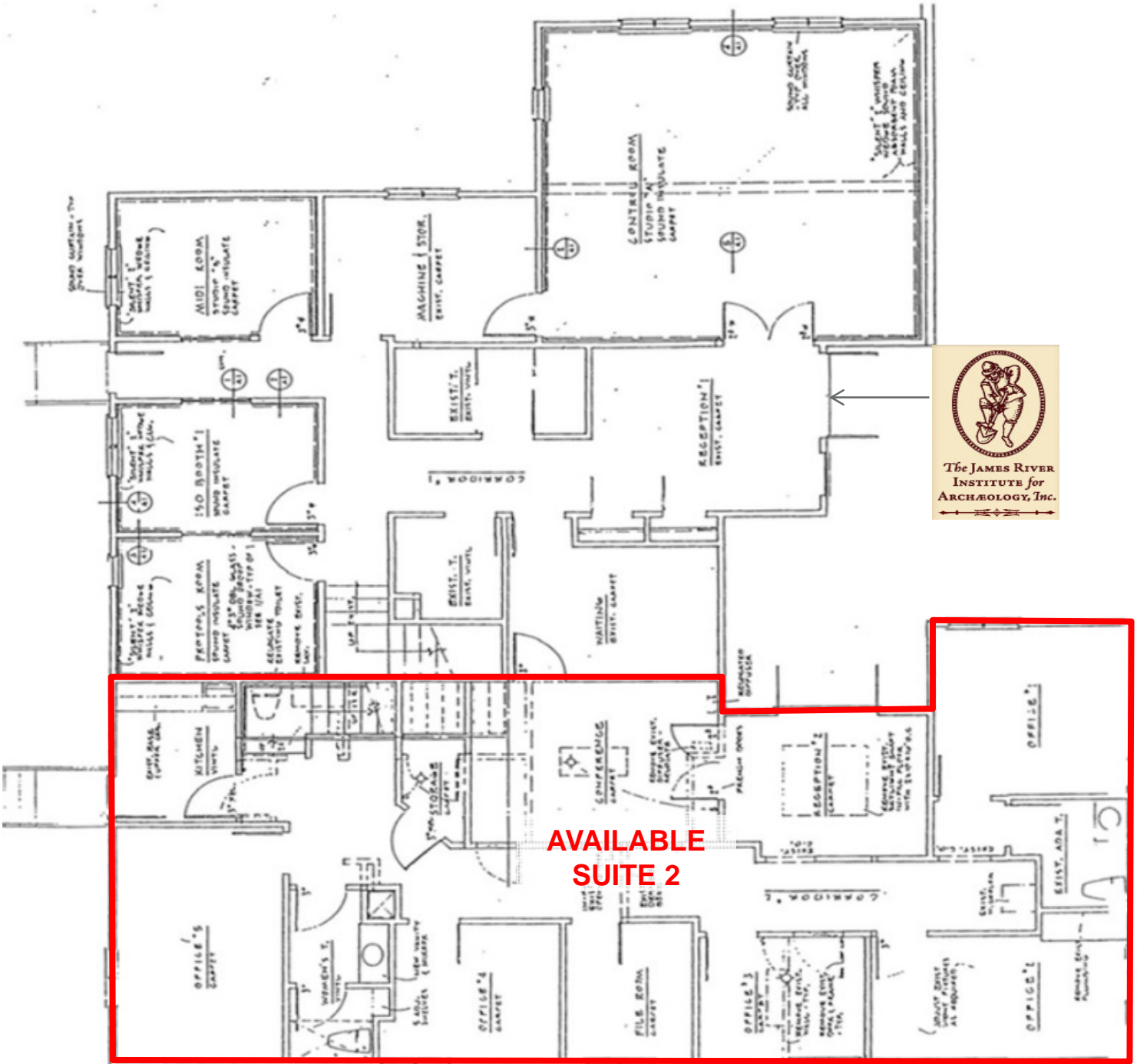


SITE PLAN

For more information, contact:

DAWN GRIGGS, SIOR
 First Vice President
 757 873 1210
 dawn.griggs@thalhimer.com

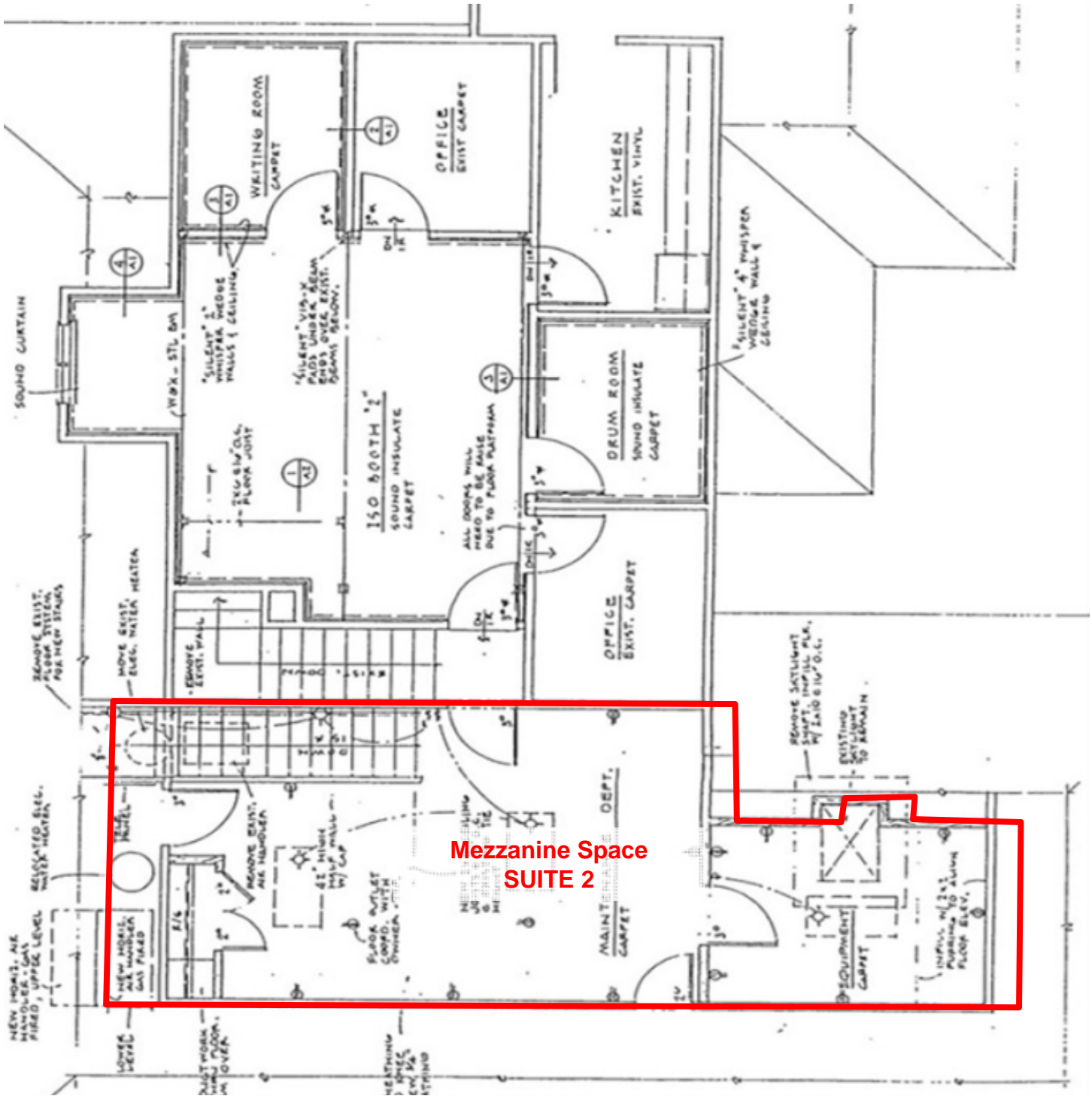
One BayPort Way, Suite 100
 Newport News, VA 23606
 www.thalhimer.com



For more information, contact:

DAWN GRIGGS, SIOR
 First Vice President
 757 873 1210
 dawn.griggs@thalhimer.com

One BayPort Way, Suite 100
 Newport News, VA 23606
 www.thalhimer.com



For more information, contact:

DAWN GRIGGS, SIOR
 First Vice President
 757 873 1210
 dawn.griggs@thalhimer.com

One BayPort Way, Suite 100
 Newport News, VA 23606
 www.thalhimer.com