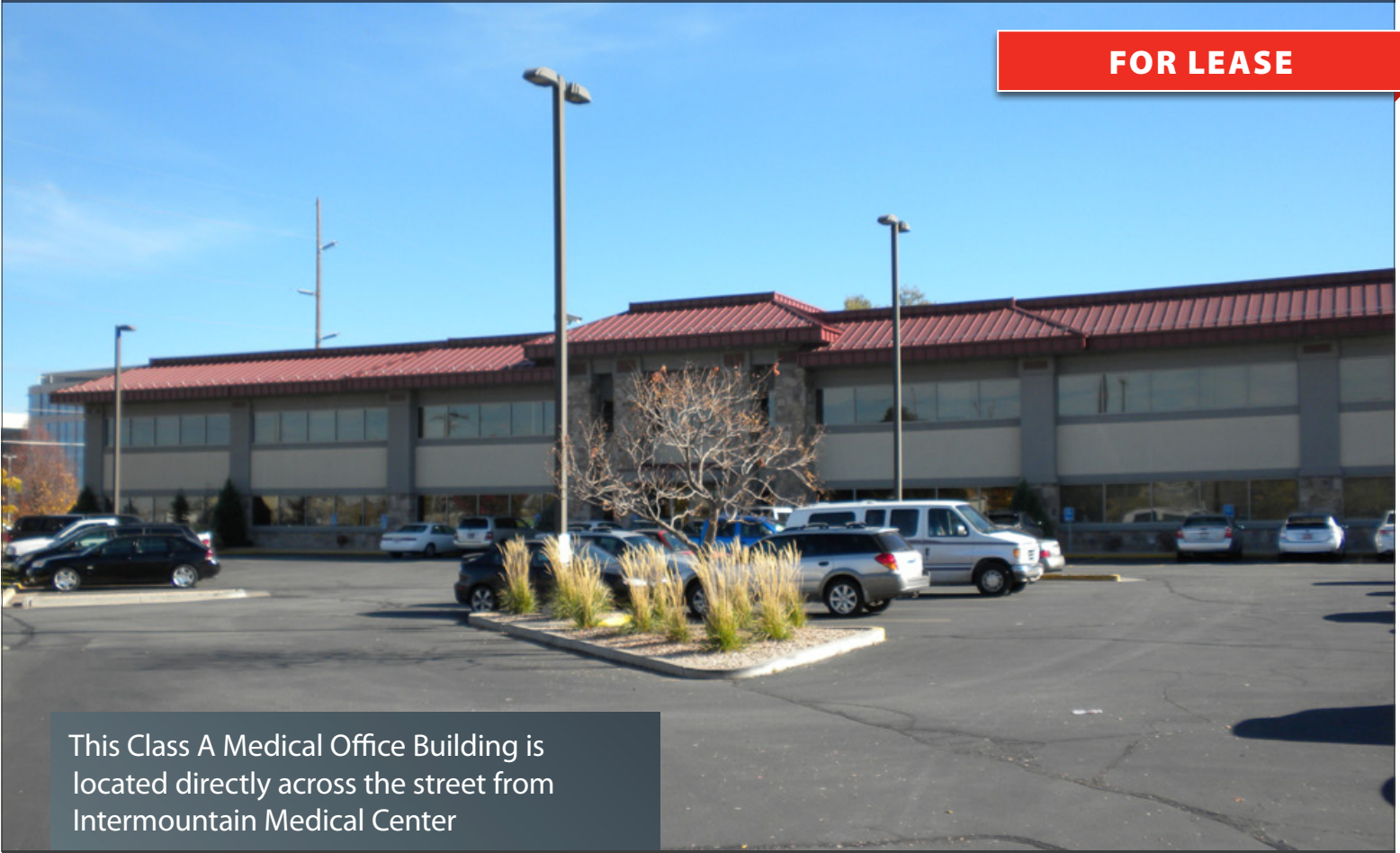


MURRAY MEDICAL ARTS BUILDING

FOR LEASE



This Class A Medical Office Building is located directly across the street from Intermountain Medical Center

5300 South Woodrow Street
Murray, Utah

property information

- Suite 201 3,760 SF
- Lease Rate \$18.00 NNN
- 4-6 Operatories
- New Space
- Class "A" Medical
- ADA Restroom in Suite

marketed by:

Ralph Riedel, CCIM **801.303.5466**
riedel@comre.com



**CUSHMAN &
WAKEFIELD®**

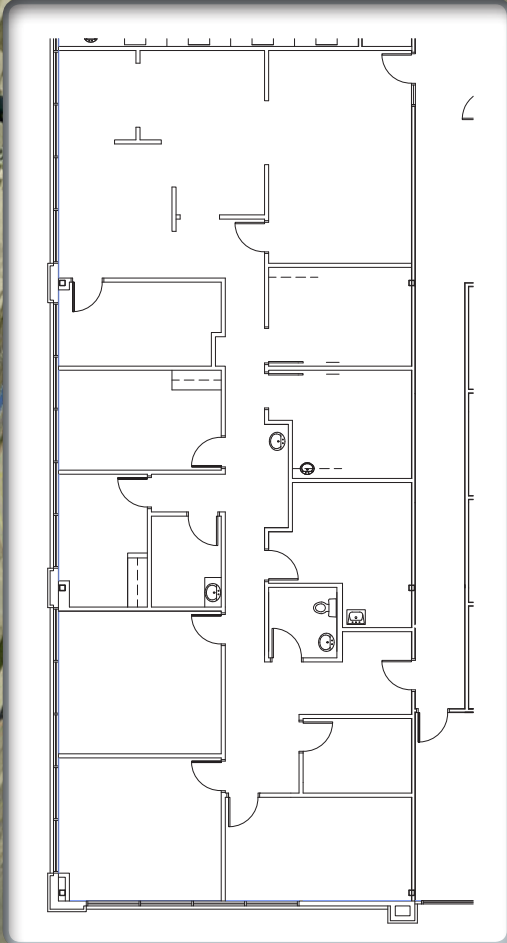
COMMERCE

REAL ESTATE SOLUTIONS • COMRE.COM

INDEPENDENTLY OWNED AND OPERATED

170 South Main Street, Suite 1600 • Salt Lake City, Utah 84101
Tel 801-322-2000 Fax 801-322-2040 • comre.com

MURRAY MEDICAL ARTS BUILDING



5300 South Woodrow Street
Murray, Utah

2011 Average Daily Traffic (ADT) courtesy of Utah Department of Transportation.



170 South Main Street, Suite 1600 • Salt Lake City, Utah 84101
Tel 801-322-2000 Fax 801-322-2040 • www.comre.com

marketed by:

Ralph Riedel, CCIM 801.303.5466
riedel@comre.com

©2014, Commerce Real Estate Solutions. Disclaimer: The above information is given with the obligation that all negotiations relating to the purchase, renting, or leasing of the property described above shall be conducted through Commerce Real Estate Solutions. No warranty or representation, express or implied, is made as to the accuracy of the information contained herein, and same is submitted subject to errors, omissions, change of price, rental or other encumbrances, withdrawal without notice, and to any special listing conditions imposed by the seller. Prospective buyers should conduct their own due diligence. Some aerial photography by DigitalGlobe or Aerials Express.
path: G:\1 - Projects\Riedel_Ralph\1 - Flyers\5300sWoodrowSt