

3,350 SF MEDICAL / OFFICE BUILDING FOR LEASE

MEDICAL / PROFESSIONAL OFFICE SPACE

BUILDING FEATURES	
Available	3,350 ± Sq. Ft.
Lot Size	.06 ± Acres
Zoning	C-2

Property Highlights

- Downtown Buffalo medical / office building available for lease
- Close to the Central Business District
- 3,350 ± Sq. Ft. available
- Former clinical space
- Excellent visibility
- On-site parking available with street parking directly in front
- Proximate to Route 33 and the I-190
- Ideal for: medical and clinical office space, CPA, tax services, public health, behavioral health, attorney's office, professional office, dentist, quasi-retail / office



For more information, contact:

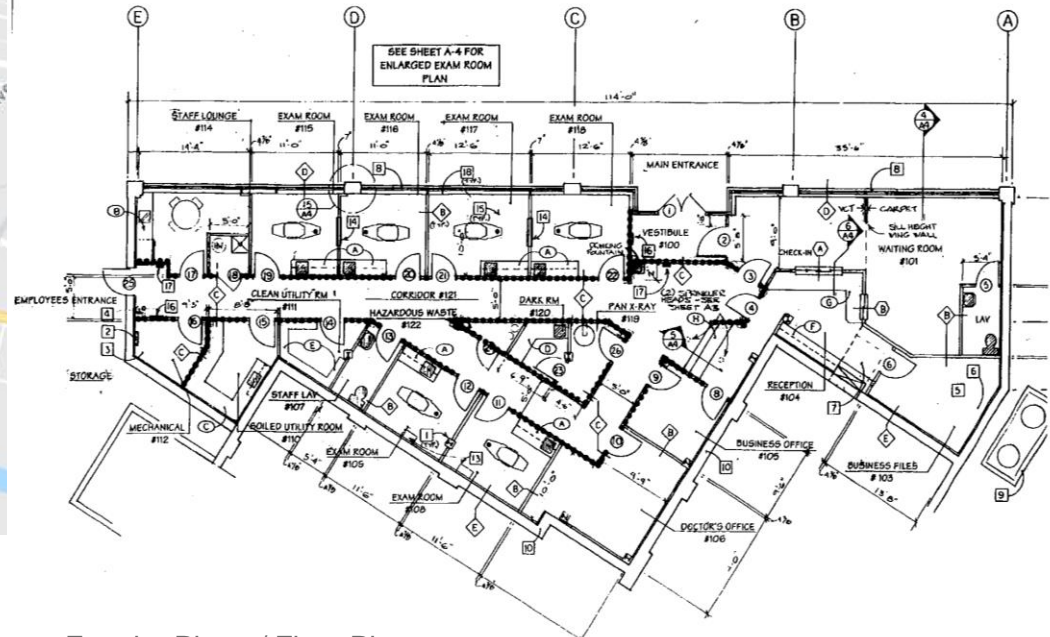
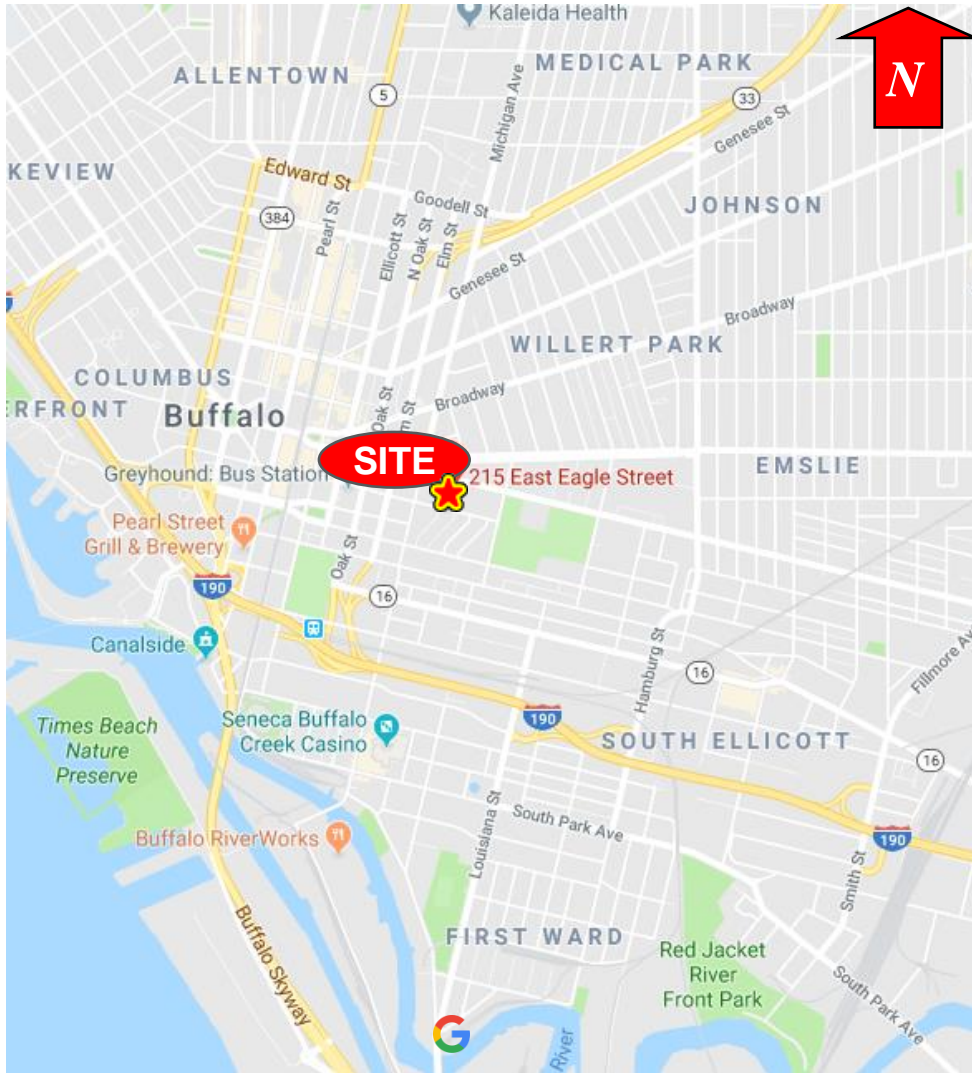
Michael R. Demyan
 Real Estate Salesperson
 716.852.7500 x127 – office
mdemyan@pyramidbrokerage.com

14 Lafayette Square
 Suite 1900
 Buffalo, New York 14203
 phone: +1 716 852-7500

pyramidbrokerage.com

DEMOGRAPHIC	1 MILE	3 MILE	5 MILE
Population	15,104	106,609	269,098
Average Household Income	\$54,141	\$50,238	\$52,096

FOR LEASE
215 East Eagle Street
 Buffalo, New York



Location Map

Exterior Photo / Floor Plan