

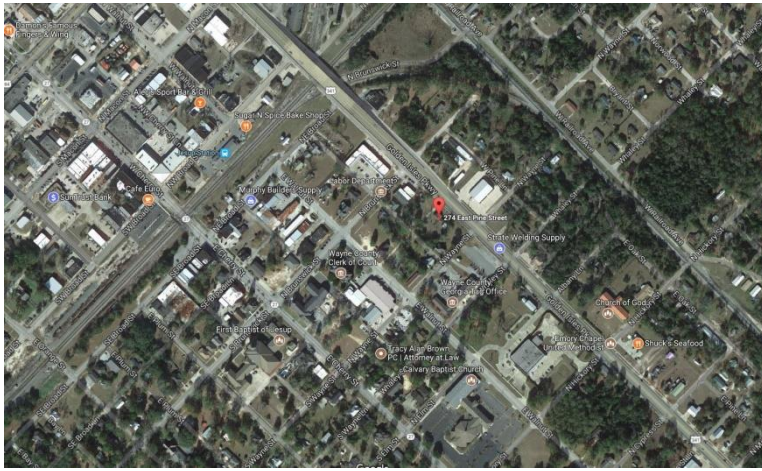
LOT

FOR SALE

\$100,000



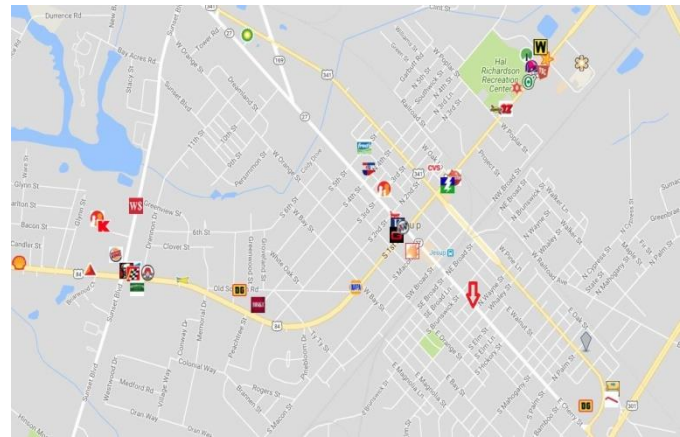
PLATINUM PARTNERS



274 E. Pine Street, Jesup GA 31546 1/2 acre corner lot

Lot size: 1/2 acre
Parcel #: J14-15

One half acre corner lot facing State Highway 341. This high traffic four lane highway links Brunswick/Jacksonville up and through the middle of Georgia and into the heart of Suburban Metropolitan Atlanta. This lot is ideally situated in an industrial area one block from the heart of Jesup, GA . Ideal location for day care, antique or resale shop.
100'x200'



Contact: Linda Soliman
912-663-9685 Cell
912-232-7120 Office
linda.soliman@coldwellbanker.com

CBCWORLDWIDE.COM

©2017 Coldwell Banker Real Estate LLC, dba Coldwell Banker Commercial Affiliates. All Rights Reserved. Coldwell Banker Real Estate LLC, dba Coldwell Banker Commercial Affiliates fully supports the principles of the Equal Opportunity Act. Each Office is Independently Owned and Operated. Coldwell Banker Commercial and the Coldwell Banker Commercial Logo are registered service marks owned by Coldwell Banker Real Estate LLC, dba Coldwell Banker Commercial Affiliates.

**Coldwell Banker Commercial
PLATINUM PARTNERS
6349 Abercorn Street
Savannah, GA 31405
888-232-7120 Office
912-356-3622 Fax**