

# FOR LEASE

3008 Harborview Drive Units 5&6  
Gig Harbor, WA 98335



## HARBORVIEW DRIVE OFFICE




First Western Properties—Tacoma Inc. | 253.472.0404  
6402 Tacoma Mall Blvd, Tacoma, WA 98409 | fwp-inc.com

**HARBORVIEW DRIVE** is located in the heart of Downtown Gig Harbor. Enjoy a short walk to visit downtown retailers, restaurants, and more. Beautiful office space with Gig Harbor waterfront views.

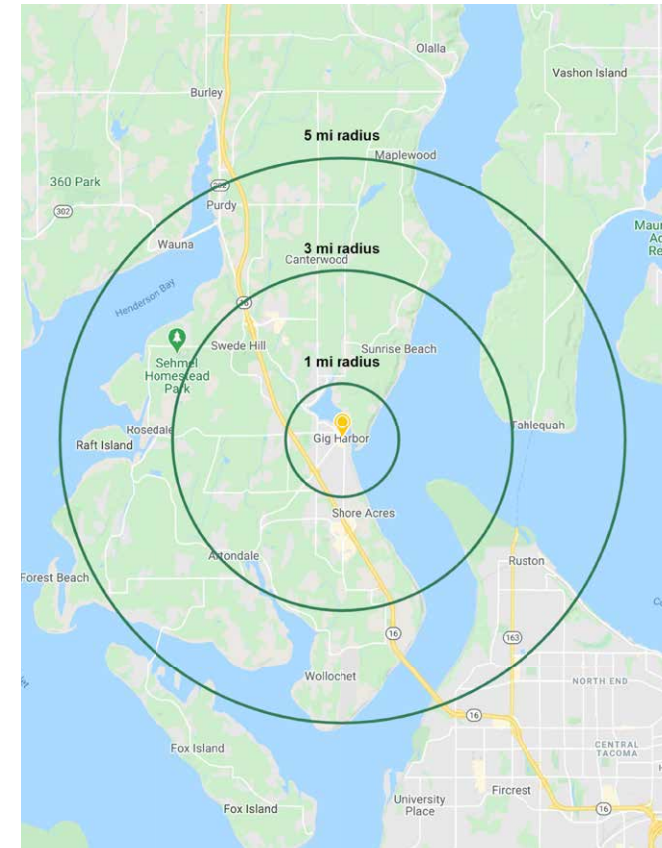
**3008 HARBORVIEW DRIVE UNITS 5&6:**

**2,092 ± SF      \$24.00 PSF      PLUS \$6.53 NNN**

- Rare opportunity in beautiful, downtown Gig Harbor
- Great parking available on site
- 5 private offices, kitchenette, and private restrooms
- Zoned Downtown Business within the City of Gig Harbor
- Close access to Highway 16

Regis - 2020	 Population	 Average HH Income	 Daytime Population
Mile 1	4,042	\$121,262	5,671
Mile 3	24,973	\$130,087	24,950
Mile 5	65,420	\$133,226	45,491

**NEARBY TENANTS**



LOCATION DETAILS



6,700 CPD  
Harborview Drive



11,600 CPD  
Pioneer Way



3 Minutes to  
Highway 16



8 minutes to  
Gig Harbor North



LOCATION AERIAL



GIG HARBOR BAY

DOWNTOWN GIG HARBOR



**FredMeyer** **AutoZone**

**HOP JACK'S** **Starbucks** **JJ**

**PETSMART** **TacoTime**

**OCEAN5** **Columbia Bank** **KeyBank**

**goodwill** **RadioShack** **BARTELL DRUGS** **GNC**

**McDonald's** **Round Table** **GOODYEAR** **Carl's Jr.**

**Bank of America** **Michaels** **SAFEWAY**

**Applebee's** **KOHL'S**

**RITE AID** **ACE Hardware** **O'Reilly**

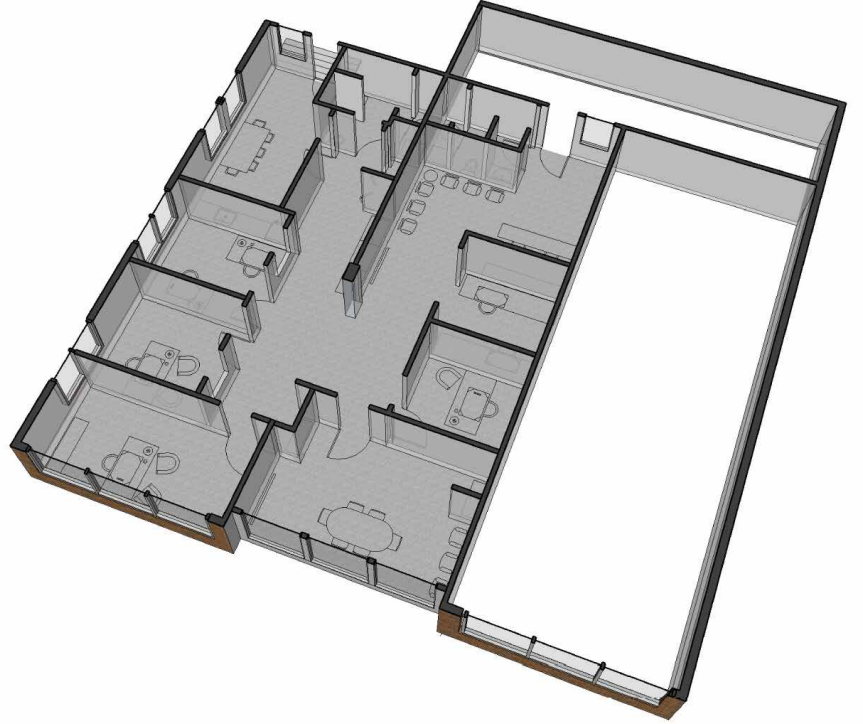
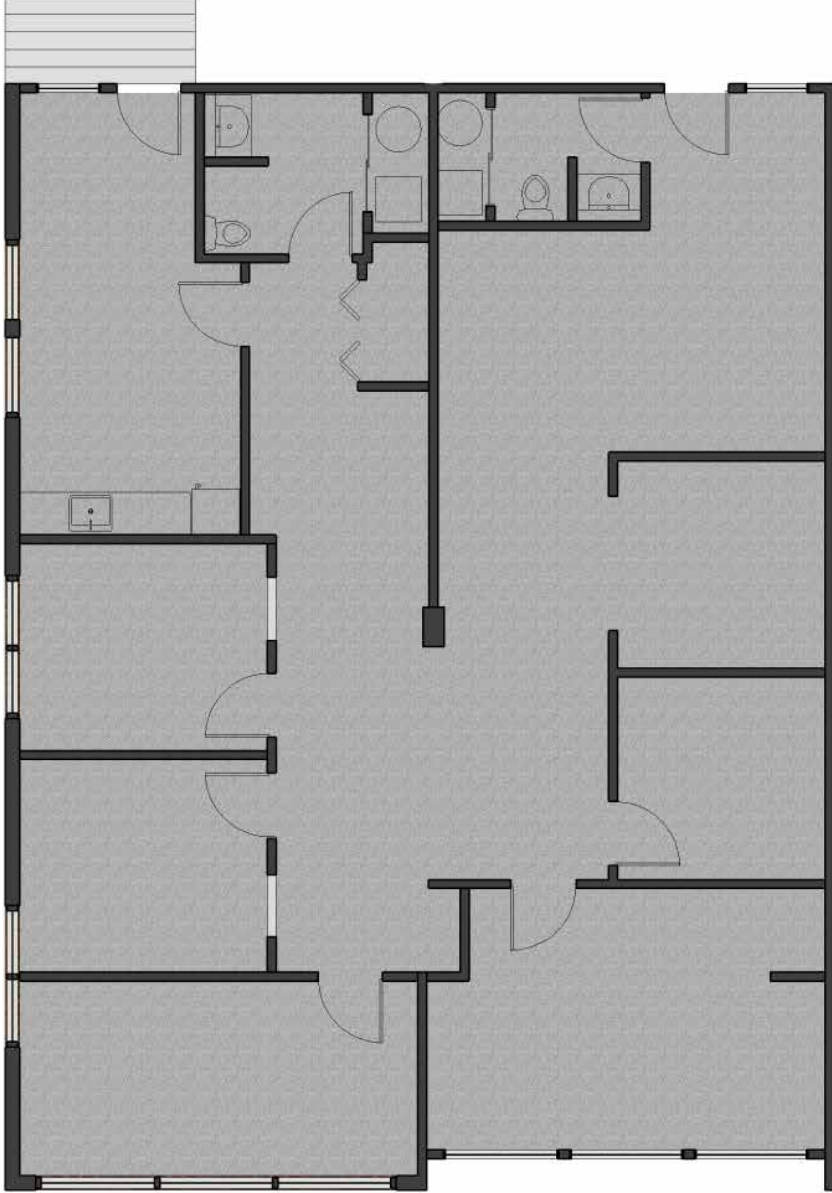
**MUDBAY CHASE**

**Panera BREAD** **J.Jill** **LOFT**

**Blazing Union** **Coldwater Creek** **GALAXY THEATRES**

**CUTTERS POINT COFFEE CO.** **BEN & JERRY'S** **Marshalls**

# FLOOR PLAN





**GIG HARBOR, WA** is both a bay on the Puget Sound and a harbor town that has been named one of the Smithsonian Magazines Top Five Small Towns for culture, heritage and charm. Its unique location, close to metropolitan centers, yet positioned on a quiet, beautiful and historic peninsula - provides visitors and residents with excellent site-seeing, history, culture, dining, shopping and more.

TACOMA | KIRKLAND | PORTLAND | SEATTLE

RELATIONSHIP FOCUSED. RESULTS DRIVEN.

**JAMIE FIRTH**

253.284.3649  
jamie@firstwesternproperties.com

**LISA TALLMAN**

253.471.5504  
lisa@firstwesternproperties.com



First Western Properties—Tacoma Inc. | 253.472.0404  
6402 Tacoma Mall Blvd, Tacoma, WA 98409 | fwp-inc.com

© First Western Properties, Inc. DISCLAIMER: The above information has been secured from sources believed to be reliable, however, no representations are made to its accuracy. Prospective tenants or buyers should consult their professional advisors and conduct their own independent investigation. Properties are subject to change in price and/or availability without notice.