



## Property Highlights

- Adjacent to Florida Atlantic University and the Boca Raton Executive Airport
- Access to Tri-Rail by Palm Tram or El Rio walking/bike trail
- University collaboration among park tenants
- On-site management

## Availability

- Full Building: 26,056 sf

## Rental Rate

- \$20.00 NNN

## Operating Expenses

- \$10.00  
*Net of electric & janitorial*

## Benefits for Research Park Companies

[CLICK TO VIEW](#)

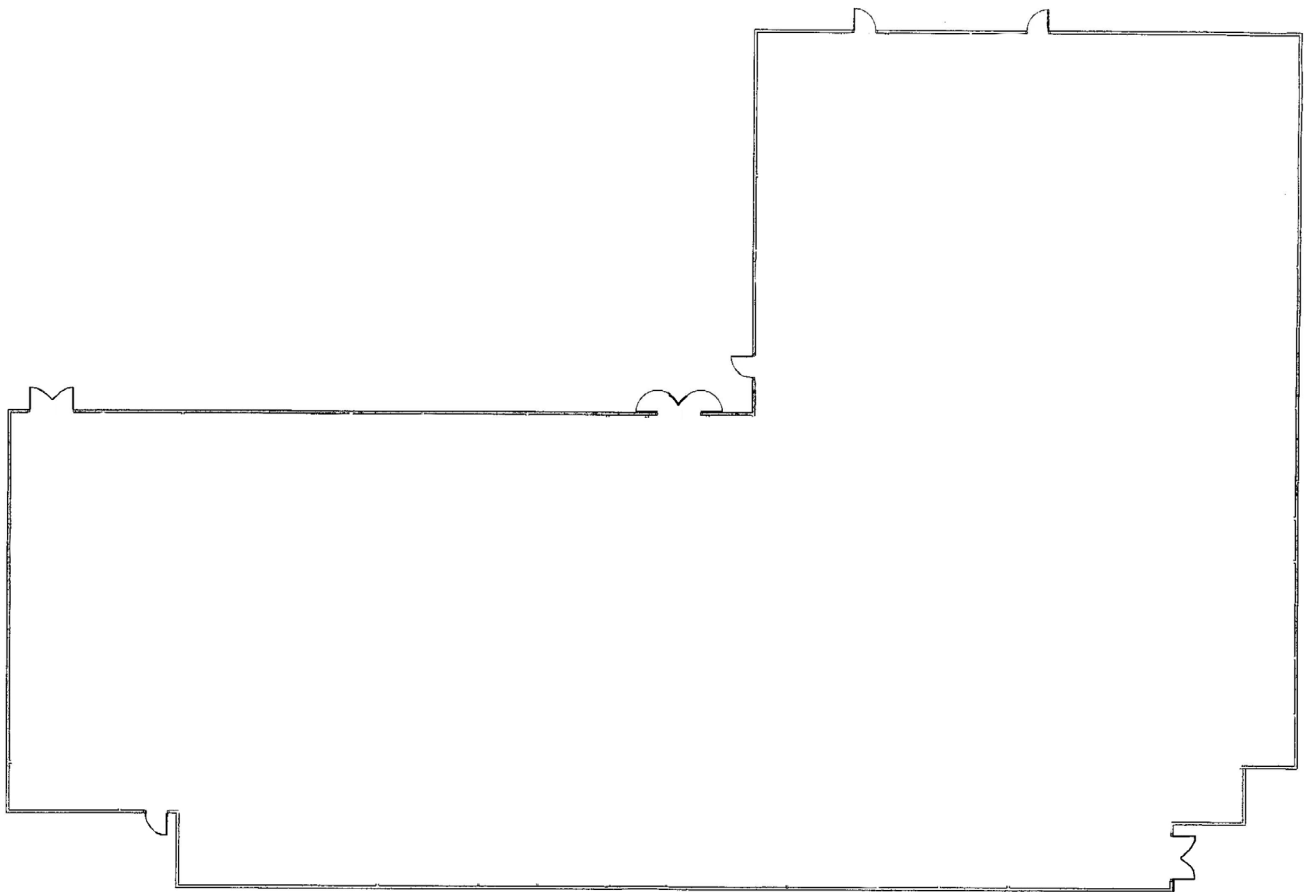
**Greg Martin**, Principal  
D 954 903 3900  
greg.martin@avisonyoung.com

**Justin Cope**, Principal  
D 954 903 3701  
justin.cope@avisonyoung.com

**Lisa Blumer**, Senior Associate  
D 954 903 3703  
lisa.blumer@avisonyoung.com

500 W Cypress Creek Road  
Suite 550  
Fort Lauderdale, FL 33309

## Full Building



Interior is demolished and well-suited for a single user.

---

**Greg Martin**, Principal  
D 954 903 3900  
greg.martin@avisonyoung.com

**Justin Cope**, Principal  
D 954 903 3701  
justin.cope@avisonyoung.com

**Lisa Blumer**, Senior Associate  
D 954 903 3703  
lisa.blumer@avisonyoung.com

500 W Cypress Creek Road  
Suite 550  
Fort Lauderdale, FL 33309

## Property Location



**RESTAURANTS**

- 1 Houston's
- 2 Seasons 52
- 3 New York Prime
- 4 Morton's Steakhouse

**MISCELLANEOUS**

- 1 Florida Atlantic University
- 2 Whole Foods
- 3 Boca Raton Museum of Art
- 4 Mizner Park
- 5 Boca Raton Airport Authority

**Greg Martin**, Principal  
D 954 903 3900  
greg.martin@avisonyoung.com

**Justin Cope**, Principal  
D 954 903 3701  
justin.cope@avisonyoung.com

**Lisa Blumer**, Senior Associate  
D 954 903 3703  
lisa.blumer@avisonyoung.com

500 W Cypress Creek Road  
Suite 550  
Fort Lauderdale, FL 33309