

KRUGER MEDICAL BUILDING

21600 Highway 99 | Edmonds, Washington 98026

Medical Space
FOR LEASE



CBRE

AVAILABLE SPACE

- Suite 270: 1,945 RSF
- Lease Rate: \$28.00/SF/YR/NNN
- Available immediately

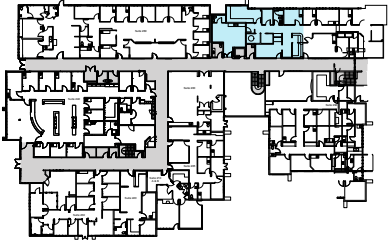


PROPERTY FEATURES

- Total building size: 44,776 SF
- Adjacent to Swedish Edmonds Campus
- Located at main entrance to hospital
- Parking: 5/1,000 SF
- Excellent Highway 99 exposure
- 2-story multi-tenant medical building
- Renovated in 2009
- Great transit options with 10+ bus lines nearby

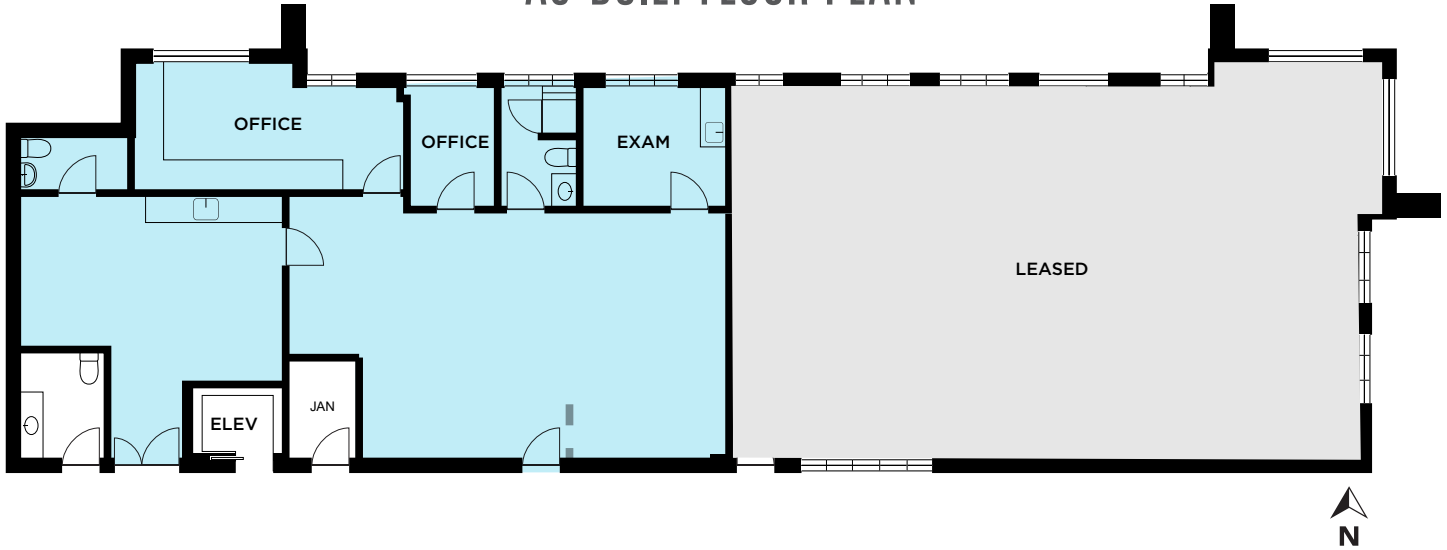


KEY PLAN



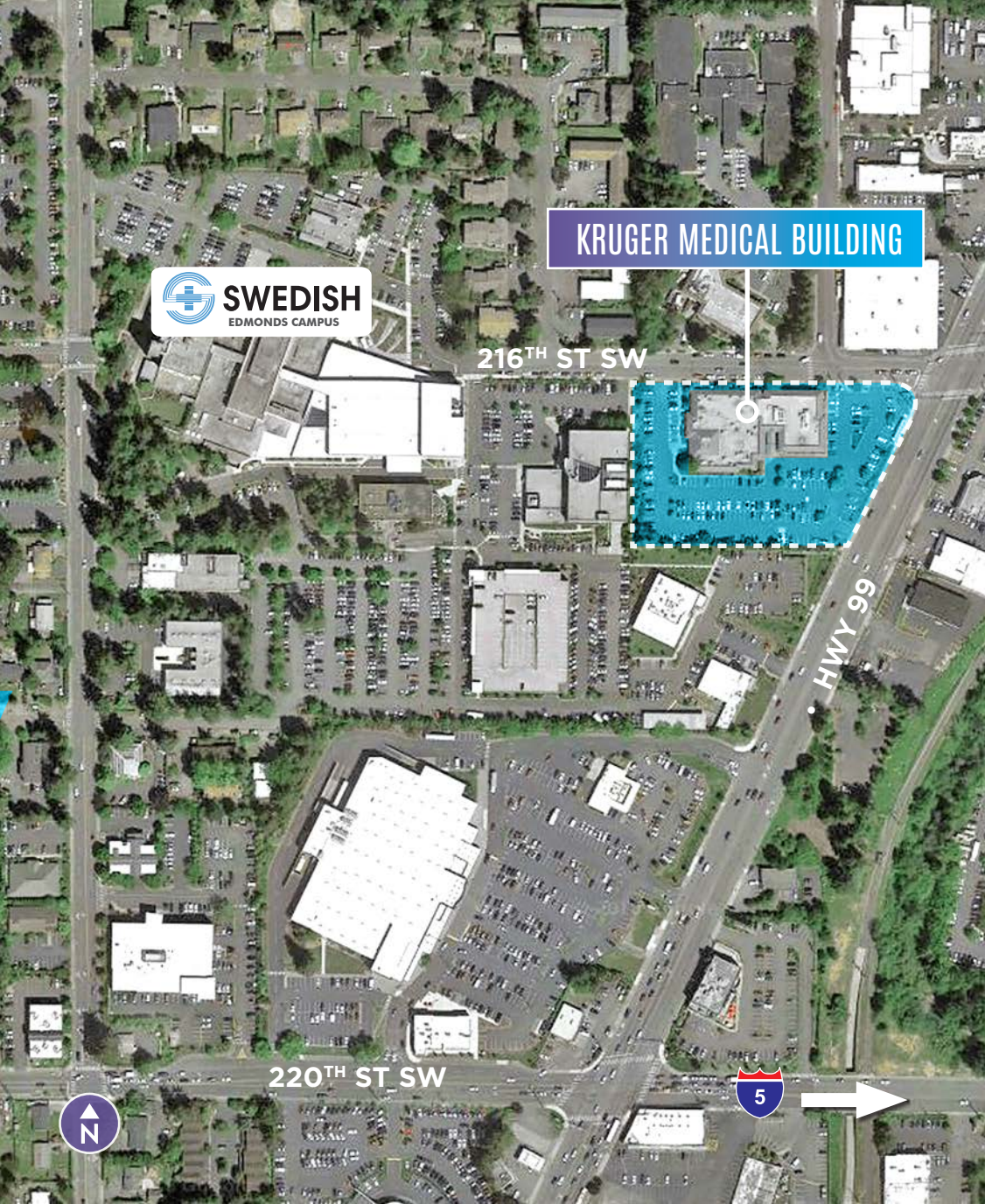
SUITE 270 | 1,945 RSF | SECOND FLOOR

AS-BUILT FLOOR PLAN



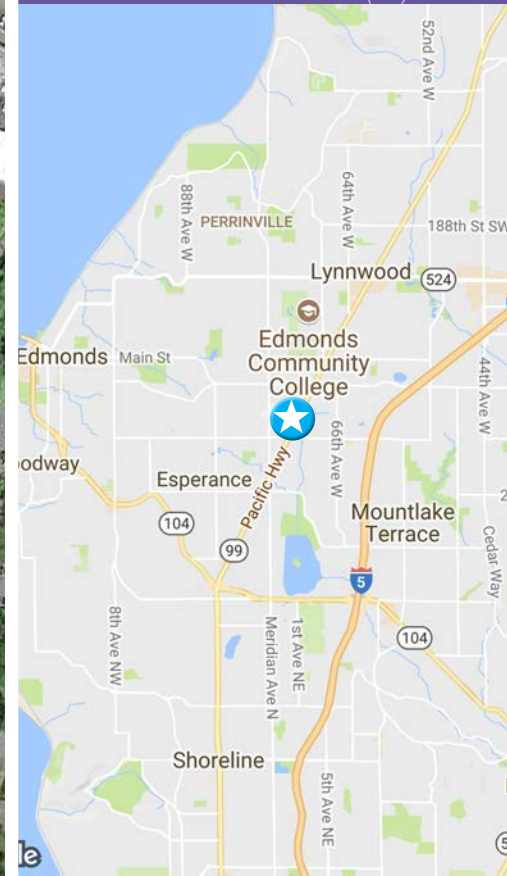
CONCEPTUAL FLOOR PLAN





KRUGER MEDICAL BUILDING

21600 Highway 99
Edmonds, WA



FOR LEASING INFORMATION, CONTACT:

JOHN BAUER
Senior Vice President
+1 425 462 6906
john.bauer@cbre.com

RIC BRANDT
Senior Vice President
+1 425 462 6901
ric.brandt@cbre.com

ERIK LARSON
Vice President
+1 425 462 6954
erik.larson@cbre.com

CBRE, INC.
929 108th Avenue NE
Suite 700
Bellevue, WA 98004

© 2020 CBRE, Inc. This information has been obtained from sources believed reliable. We have not verified it and make no guarantee, warranty or representation about it. Any projections, opinions, assumptions or estimates used are for example only and do not represent the current or future performance of the property. You and your advisors should conduct a careful, independent investigation of the property to determine to your satisfaction the suitability of the property for your needs. CBRE and the CBRE logo are service marks of CBRE, Inc. and/or its affiliated or related companies in the United States and other countries. All other marks displayed on this document are the property of their respective owners. Photos herein are the property of their respective owners and use of these images without the express written content of the owner is prohibited.
PMSTUDIO_October_2020

CBRE