

168-14 Jamaica Avenue, Jamaica, NY

BEST PRICE IN JAMAICA!

Property Features

- ❖ Excellent location
- ❖ Large windows with natural light
- ❖ Prominent signage available
- ❖ Walk-up
- ❖ Possible lift installation

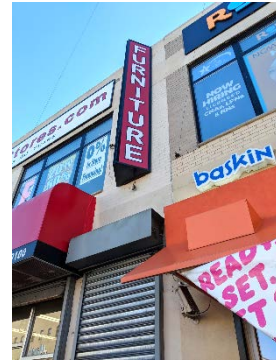
Location

Easy access Van Wyck Expressway and Grand Central Parkway
Steps from 800 unit residential development coming soon

Transportation

Short walk to Q6, Q8, Q17, Q24, Q30, Q31, Q41, Q54, Q56, Q110 with connection to the E, J & Z subway lines

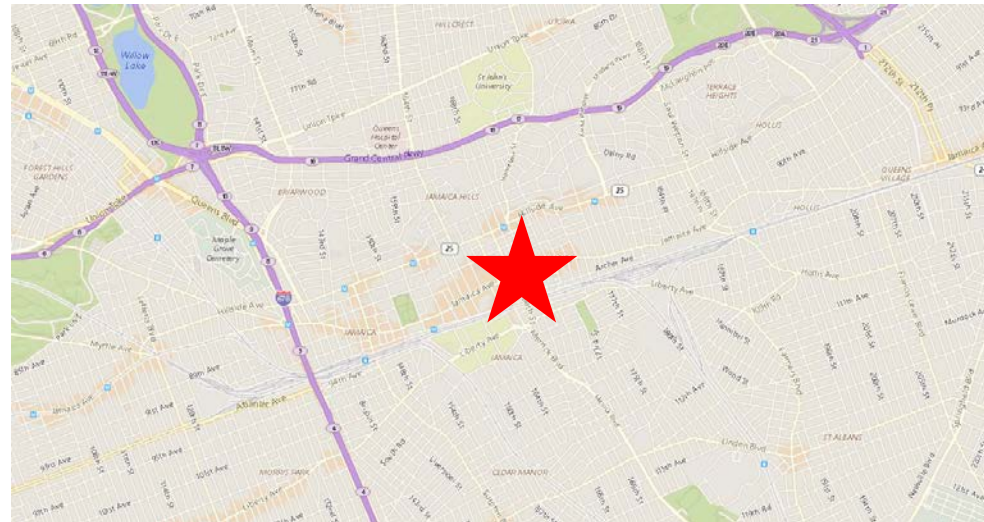
CALL FOR PRICING



7,000 Sq. Ft.
Prime 2nd Floor
Space For Lease

Possible
Additional
Ground Floor
1,200 Sq. Ft.

*~ Ideal for Retail,
General Office, Creative
Use, Art Gallery ~*

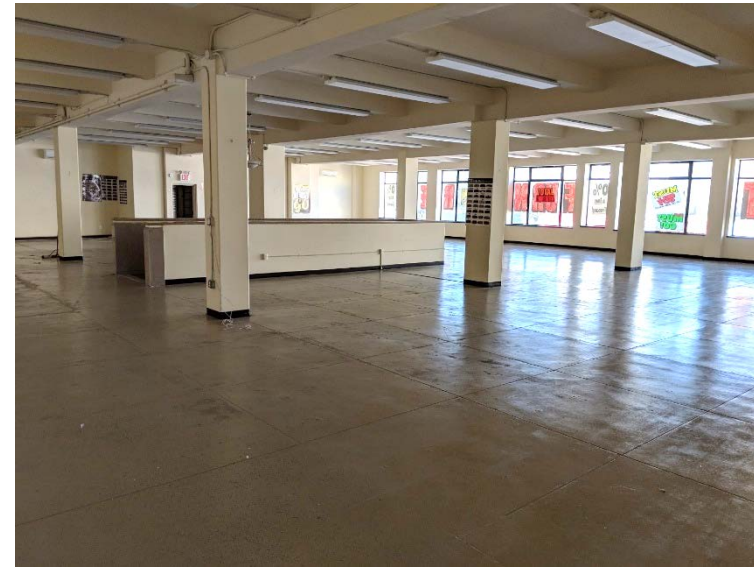


For Further Information and Inspection, Please Contact Exclusive Agent:

Melissa Grasso • Salesperson • (718) 371-0127 • mgrasso@s-z.com Marc Durst • Assoc. Broker • (718) 732-0626 • mdurst@s-z.com

Kaufman Astoria Studios 35-11 35th Avenue, Long Island City, NY 11106 • (718) 392-5959 • Fax (718) 937-6546
www.s-z.com

168-14 Jamaica Avenue, Jamaica, NY



For Further Information and Inspection, Please Contact Exclusive Agent:

Melissa Grasso • Salesperson • (718) 371-0127 • mgrasso@s-z.com Marc Durst • Assoc. Broker • (718) 732-0626 • mdurst@s-z.com

Kaufman Astoria Studios 35-11 35th Avenue, Long Island City, NY 11106 • (718) 392-5959 • Fax (718) 937-6546

www.s-z.com