

1850 CHESTNUT PLACE



1850 CHESTNUT PLACE

DENVER, CO 80202 | RETAIL SPACE FOR LEASE



This document has been prepared by Colliers International for advertising purposes only. The information contained herein has been obtained from sources we deem reliable. While we have no reason to doubt its accuracy, no warranty or representation is made of the foregoing information. Terms of sale or lease and availability are subject to change or withdrawal without notice.

JAWARA PARTEE | 720 833 4634 | JAWARA.PARTEE@COLLIERS.COM





## BUILDING INFO

Broker: **Jawara Partee**  
720 833 4634  
jawara.partee@colliers.com

Lease Rate: \$35.00/SF NNN  
NNN: TBD  
Total Available: 1,100 RSF

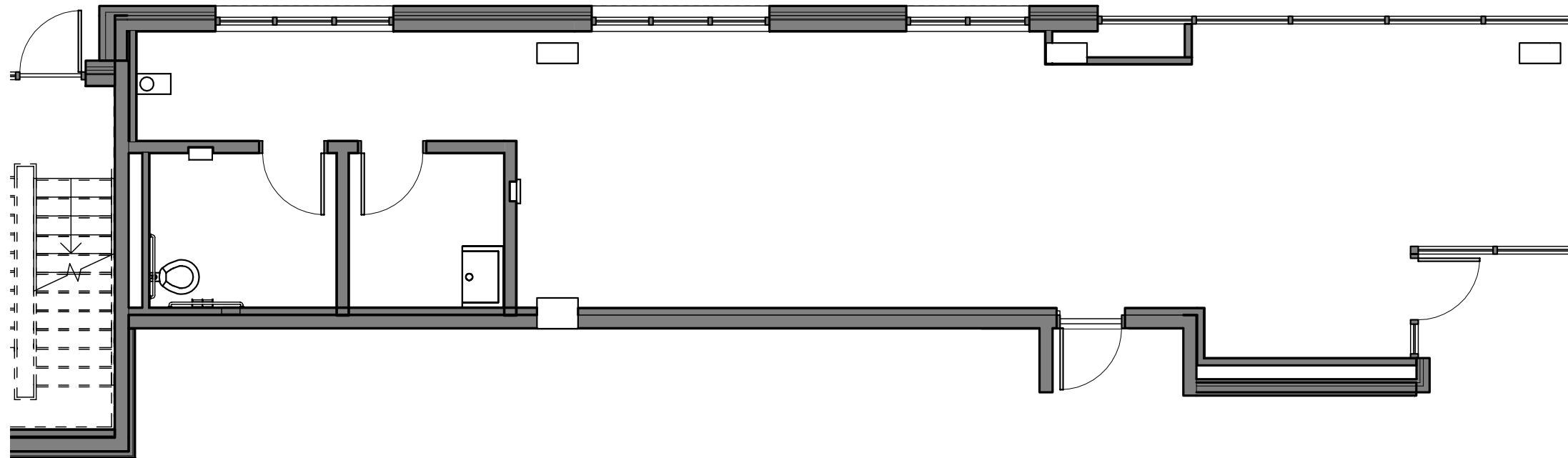
## Demographics

	0.25 Miles	0.5 Miles	1 Mile
Total Population	5,567	13,554	32,981
Daytime Population	4,882	31,821	102,082
Average HH Income	\$181,720	\$147,153	\$124,234

ESRI 2018 Estimate

## HIGHLIGHTS

- Ground floor retail space in the heart of Union Station
- Located on the ground floor of Ashley Union Station, a 107 unit multi-family building
- Grease trap and hood in place
- 3 designated retail parking spaces
- Directly across from Hotel Indigo
- Extremely high income area
- Conveniently located between King Soopers and Whole Foods Market



1850  
CHESTNUT  
PLACE

