

FOR LEASE

8435 Georgetown Road

Indianapolis, IN 46268



North by Northwest: Building IV Office/Warehouse Facility

- Area** Building IV: 59,605 total SF (divisible)
- Availability** Suite 300 (7,444 SF with ± 1,917 SF office build-out*)
- Loading** Docks with seals and levelers, drive-ins
- Zoning** I-2-S
- Fire Protection** Wet sprinkler system
- Ceiling Height** 18' clear height
- Year Built** 1995
- Other** Individual exterior entries, convenient I-465 access, close local amenities



For more information, contact:

Michael W.M. Weishaar, SIOR
+1 317 639 0494
michael.weishaar@cushwake.com

Todd T. Vannatta, SIOR
+1 317 639 0455
todd.vannatta@cushwake.com

One American Square, Suite 1800
Indianapolis, IN 46282

Main: +1 317 634 6363

Fax: +1 317 639 0504

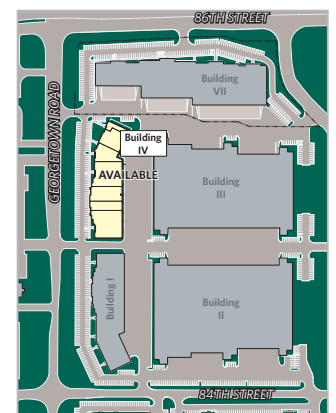
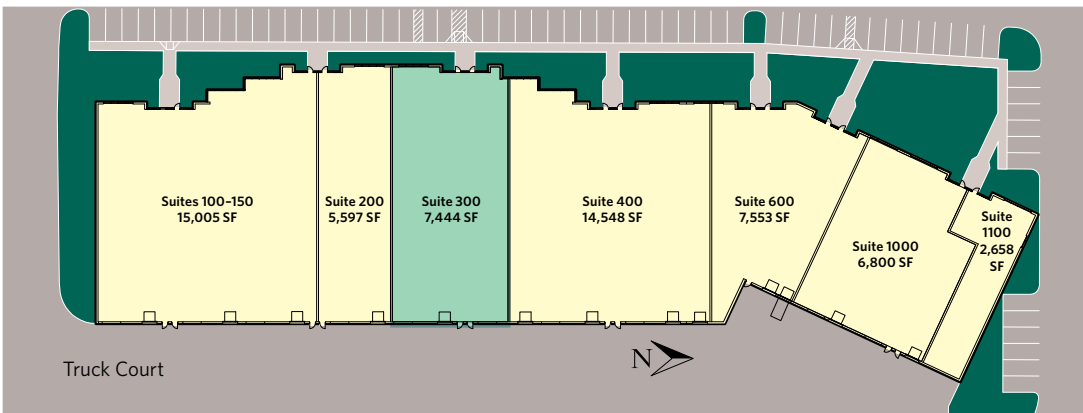
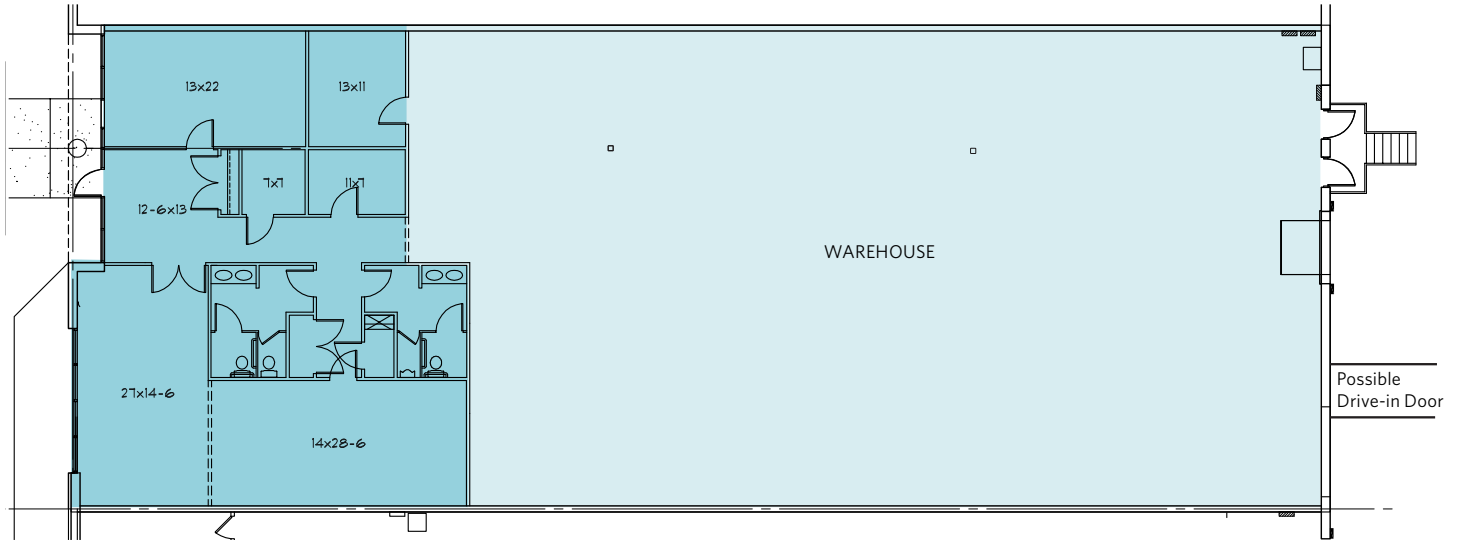
cushmanwakefield.com

FOR LEASE
8435 Georgetown Road
Indianapolis, IN 46268



Suite 300

- 7,444 SF available
- One dock
- ± 1,917 SF office
- 18' ceilings
- One drive-in can be added



For more information contact:

Michael W.M. Weishaar, SIOR
Executive Director
+1 317 639 0494
michael.weishaar@cushwake.com

Todd T. Vannatta, SIOR
Senior Director
+1 317 639 0455
todd.vannatta@cushwake.com

One American Square
Suite 1800
Indianapolis, IN 46282
cushmanwakefield.com