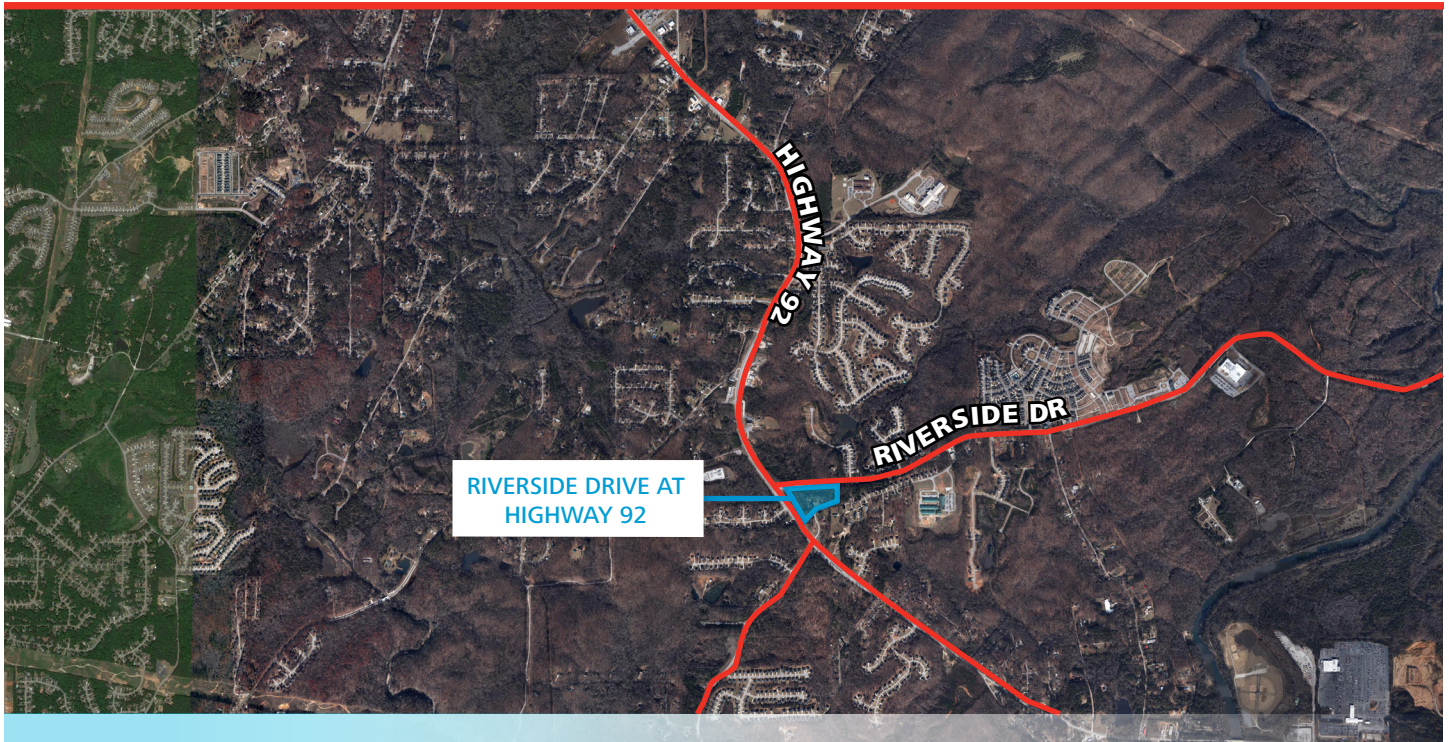


Riverside Drive at Highway 92

Douglas County, Georgia

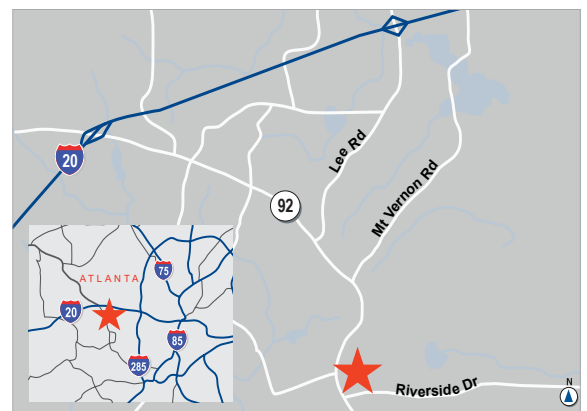


5.3 ACRES: CORNER SITE

SALE PRICE: \$550,000.00

HIGHLIGHTS

- Daily traffic count of 25,000 ±
- 1,300 feet total road frontage
- Current zoning residential R-LD, Douglas County
- Community village center designated future land use
- Property is located in Highway 92 Village Overlay District



Ackerman & Co.

LARRY WOOD
770.913.3902
lwood@ackermanco.net

 **PIONEER**
LAND GROUP

KYLE GABLE
404.867.3332
kgable@pioneerlandga.com

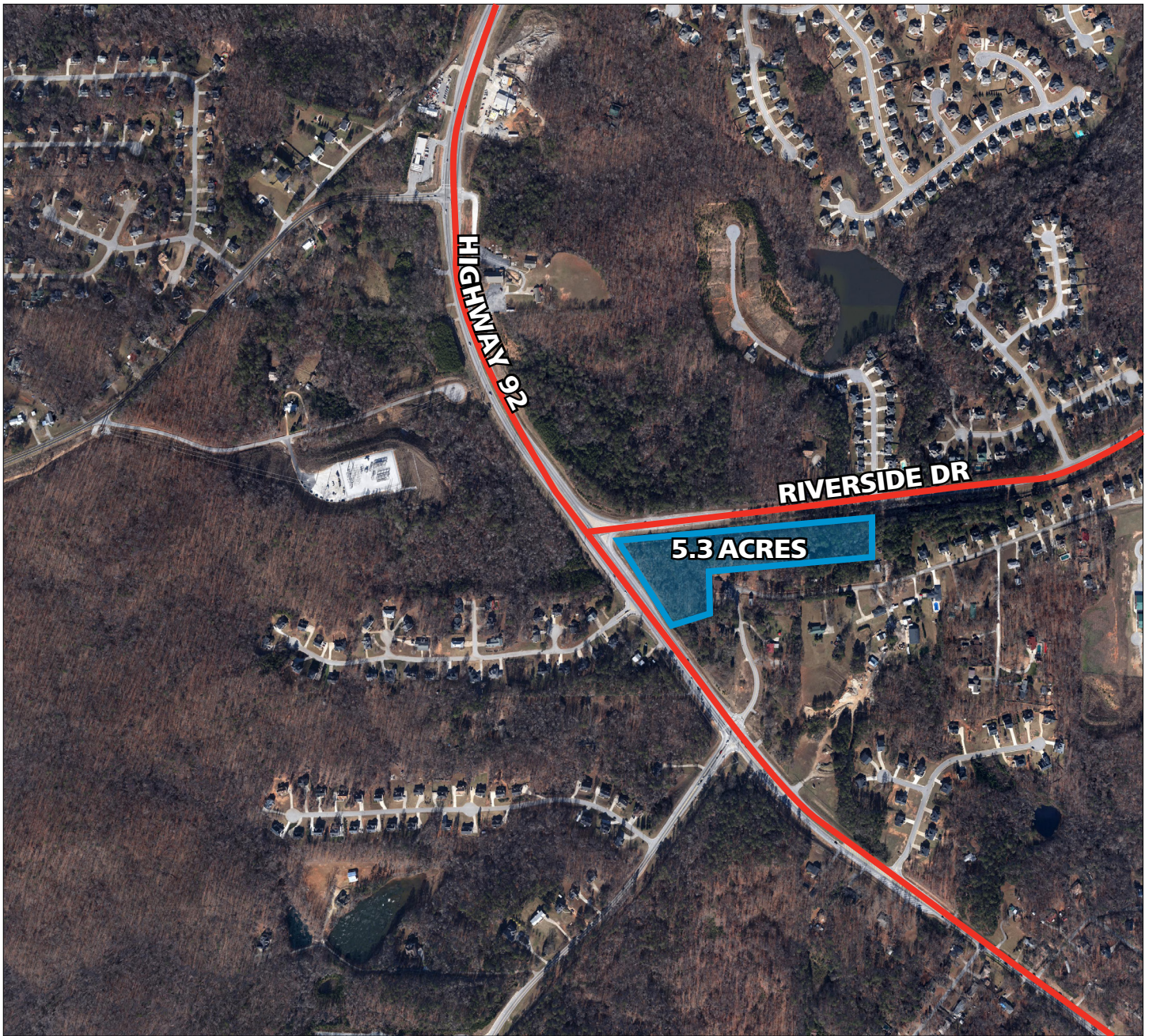
www.ackermanco.com

©2015 Ackerman & Co. All rights reserved. While we have no reason to doubt the accuracy of the information provided from sources we deem reliable, we cannot guarantee it and therefore assume no liability for errors, omissions or changes to this content.

Riverside Drive at Highway 92

Douglas County

AERIAL



Ackerman & Co.

LARRY WOOD
770.913.3902
lwood@ackermanco.net



KYLE GABLE
404.867.3332
kgable@pioneerlandga.com

www.ackermanco.com

©2015 Ackerman & Co. All rights reserved. While we have no reason to doubt the accuracy of the information provided from sources we deem reliable, we cannot guarantee it and therefore assume no liability for errors, omissions or changes to this content.

