

LEGACY LOGISTICS CENTER BUILDING II

620 South 5700 West, Salt Lake City, Utah 84104

**UNDER CONSTRUCTION
DELIVERY: Q2 2019**



FOR LEASE

383,892 SF
\$0.44 PSF/MONTH NNN

PROPERTY FEATURES

- 383,892 Total Square Feet
- Office Build to Suit
- Seventy-Six (76) Dock High Doors (8'x10')
- Twenty-Nine (29) Docks Equipped with Levelers, Seals and Bumpers
- Eight (8) Ground Level Doors (12'x14')
- 36' Minimum Clear Height
- 51' x 56' Column Spacing
- 2,500 Amps / 480 / 277 Volt / 3 Phase Power Supply
- ESFR Fire Suppression System
- Cross Dock Load Configuration
- Natural Light
 - Skylights Throughout
 - Large Glass Front Entryways
 - Clerestory Windows Throughout
- On Site Trailer Parking (132) Trailer Stalls
- 281 Auto Parking Stalls
- 463.5' Building Depth
- Minutes to Salt Lake International Airport
- Excellent Access to I-15, I-215, Bangerter Highway, Highway 201 and I-80

FOR MORE
INFORMATION
CONTACT

LUCAS M. BURBANK
801.578.5522
lburbank@ngacres.com

KYLE ROBERTS, CCIM, SIOR
801.578.5525
kroberts@ngacres.com

JEFF HEATON, CCIM, SIOR
801.578.5539
jheaton@ngacres.com

KELSIE AKIYAMA
801.578.5504
kakiyama@ngacres.com

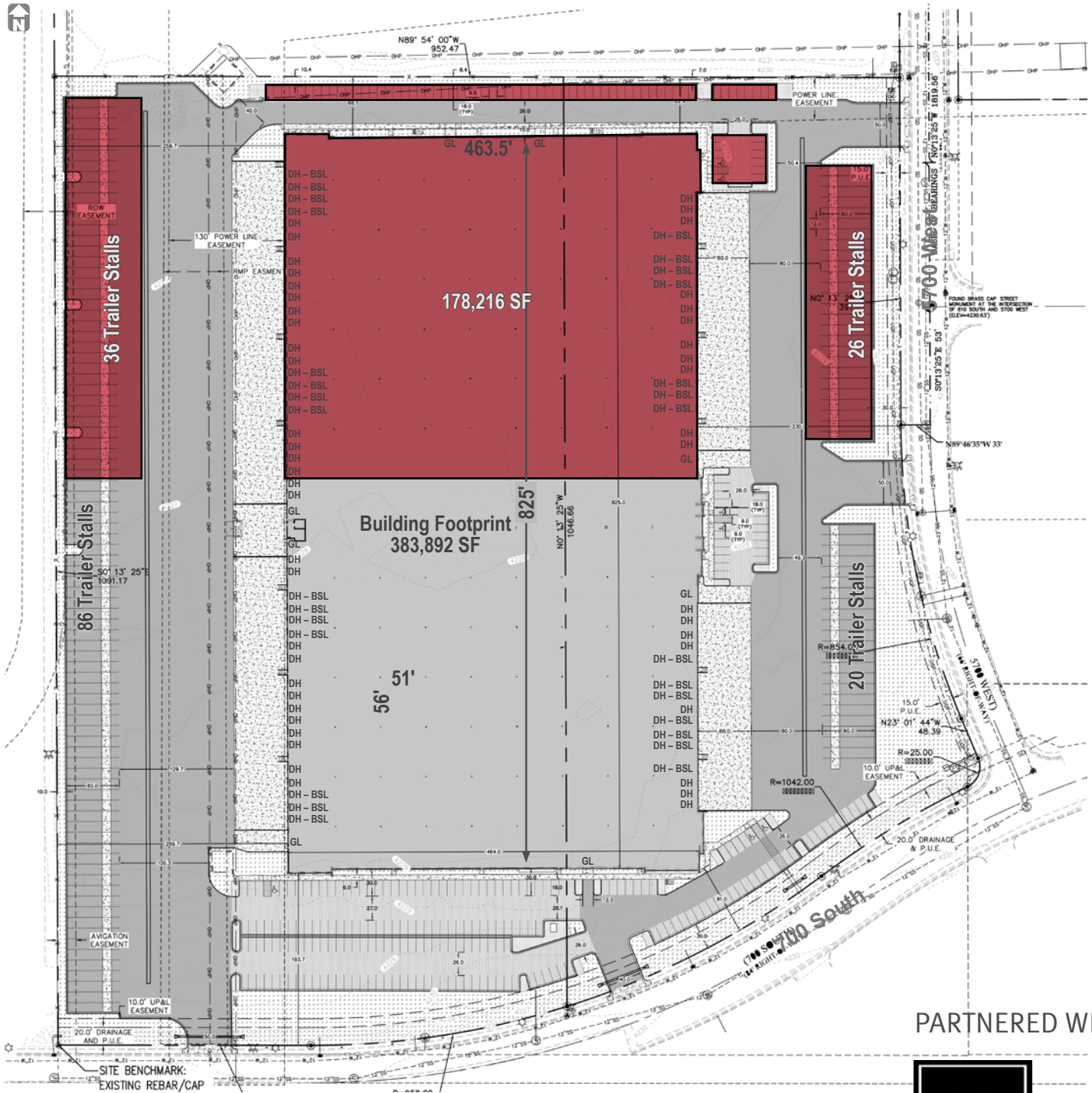
 **Newmark Grubb**
ACRES

376 East 400 South, Suite 120 | Salt Lake City, Utah 84111 | 801.578.5555 | www.ngacres.com

This document has been prepared by Newmark Grubb ACRES for advertising and general information purposes only. While the information contained herein has been obtained from what are believed to be reliable sources, the same has not been verified for accuracy or completeness. Newmark Grubb ACRES accepts no responsibility or liability for the information contained in this document. Any interested party should conduct an independent investigation to verify the information contained herein.

LEGACY LOGISTICS CENTER BUILDING II

620 South 5700 West, Salt Lake City, Utah 84104



PARTNERED WITH:



PROPERTY STATS

- Building Depth: 463' 6"
- Building Length: 825'
- Column Spacing: 51' x 56'
- Clear Height: 36'
- Dock High Doors: 76
- Ground Level Doors: 8
- Total Auto Parking Stalls: 281
- Total On Site Trailer Parking Stalls: 132
- Skylights: 91
- Storefront Windows: 32
- Clerestory Windows: 122



376 East 400 South, Suite 120 | Salt Lake City, Utah 84111 | 801.578.5555 | www.ngacres.com

This document has been prepared by Newmark Grubb ACRES for advertising and general information purposes only. While the information contained herein has been obtained from what are believed to be reliable sources, the same has not been verified for accuracy or completeness. Newmark Grubb ACRES accepts no responsibility or liability for the information contained in this document. Any interested party should conduct an independent investigation to verify the information contained herein.

LEGACY LOGISTICS CENTER BUILDING II

620 South 5700 West, Salt Lake City, Utah 84104



LEGACY LOGISTICS CENTER BUILDING II

620 South 5700 West, Salt Lake City, Utah 84104



DRIVE TIME TO:

 1 Minutes

 3 Minutes

 4 Minutes