

120 East 73rd Street Between Park & Lexington Avenue

Boutique Medical Office Offered by Prime Manhattan Realty

EXCLUSIVE LISTING



Ground Floor Medical Office Space in an Upper East Side Townhouse

Area approximately: 923 RSF.
Asking Rent: \$5,000 per month
Rental Rate: \$65.00 Per Square Foot

- Great Upper East Side Location
- Between Park & Lexington Avenue
- Potential for (2) To (3) Private Offices
- (2) Offices with direct access to Private Court Yard
- (2) Private Bathrooms
- One of the Bathrooms is part of the large Office overlooking court yard
- Second ADA Bathroom is in Waiting Area
- Waiting Area can accommodate (6) To (8) People
- Wet Pantry
- Tenant Controlled Air-Conditioning
- Ideal Space for Therapists, Dentists, Acupuncturist, Physical Therapy or any other Boutique type of Medical Practice.
- 24/7 Day Building Access
- Convenient Location to #6 Train plus Lexington & Madison Avenue Bus.

Stanley J. Piesh

Executive Managing Director

Prime Manhattan Realty

Direct: 212-594-7354

Mobile: 917-282-8590

E-mail: spiesh@primemanhattan.com

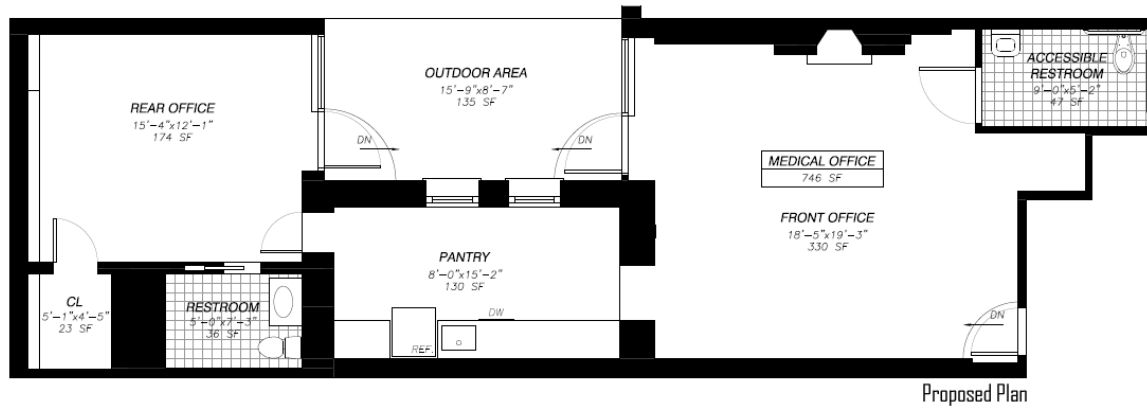
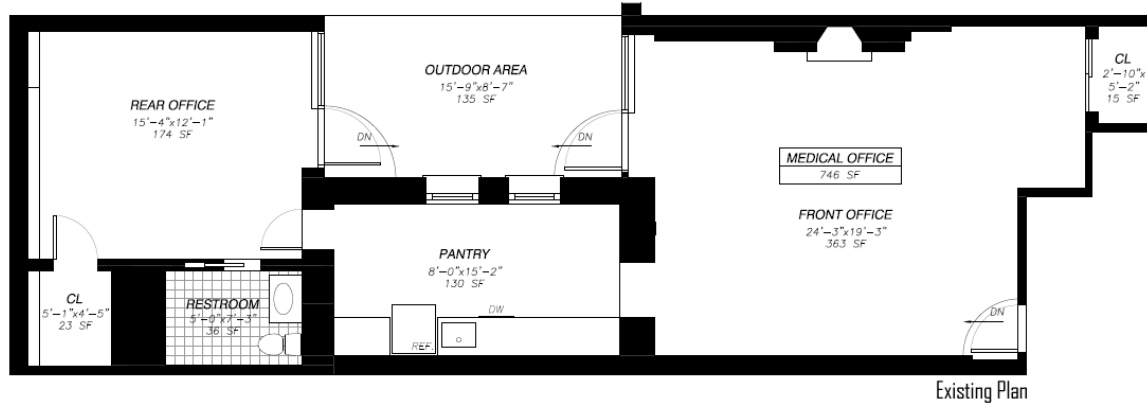


120 East 73rd Street

Between Park & Lexington Avenue

Boutique Medical Office Offered by Prime Manhattan Realty

EXCLUSIVE LISTING



BASEMENT LEVEL MEDICAL OFFICE
120 EAST 73RD ST
NEW YORK, NY 10021

120 East 73rd Street

Between Park & Lexington Avenue

Boutique Medical Office Offered by Prime Manhattan Realty

EXCLUSIVE LISTING

