

FOR SALE

510

±2,858 SF MEDICAL/OFFICE CONDO

N. 13TH AVENUE, UPLAND, CA 91786

PRICE REDUCED!

SELLER WANTS LAST DEAL DONE!



PROPERTY OVERVIEW

- Fully Built Out Medical/Office Suites for Immediate Occupancy
- Rare Opportunity for Doctors to Own their Own Offices
- Newly Renovated Building
- High End Professional Common Areas
- Great Upland Location near San Antonio Hospital



FOR MORE INFORMATION PLEASE CONTACT:

Jeff Bischofberger
 Senior Vice President/Principal
 D • 909.373.2708
 E • jbischof@lee-assoc.com
 DRE #01512151

Greg Martin
 Senior Vice President/Principal
 D • 909.373.2904
 E • gmartin@lee-assoc.com
 DRE #01001749



All information furnished regarding property for sale, rental or financing is from sources deemed reliable, but no warranty or representation is made to the accuracy thereof and same is submitted to errors, omissions, change of price, rental or other conditions prior to sale, lease or financing or withdrawal without notice. No liability of any kind is to be imposed on the broker herein.

AVAILABLE SUITES / PRICING

Suite	Size (RSF)	Price/SF
101	±1,490	SOLD
104	±1,351	SOLD
202	±2,858	SOLD
204	±3,700	SOLD
301	±1,465	\$534,725/\$365
302	±1,393	\$508,445/\$365
**301/302	±2,858	\$986,010/\$345
304/306	±3,700	SOLD

**Now Asking:
\$850,000/\$297**

*Could possibly be split into two units

GARAGE AVAILABILITY

1	\$50,000	7	\$50,000
2	\$45,000	8	\$45,000
3	\$45,000	9	\$45,000
4	\$45,000	10	\$45,000
5	\$50,000	11	\$45,000
6	\$55,000	12	\$45,000
		13	\$50,000

FOR MORE INFORMATION PLEASE CONTACT:

Jeff Bischofberger
Senior Vice President/Principal
D • 909.373.2708
E • jbischof@lee-assoc.com
DRE #01512151

Greg Martin
Senior Vice President/Principal
D • 909.373.2904
E • gmartin@lee-assoc.com
DRE #01001749



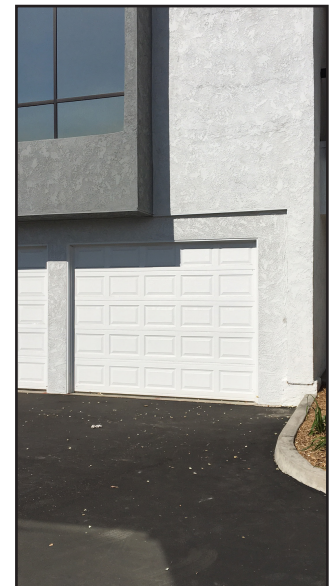
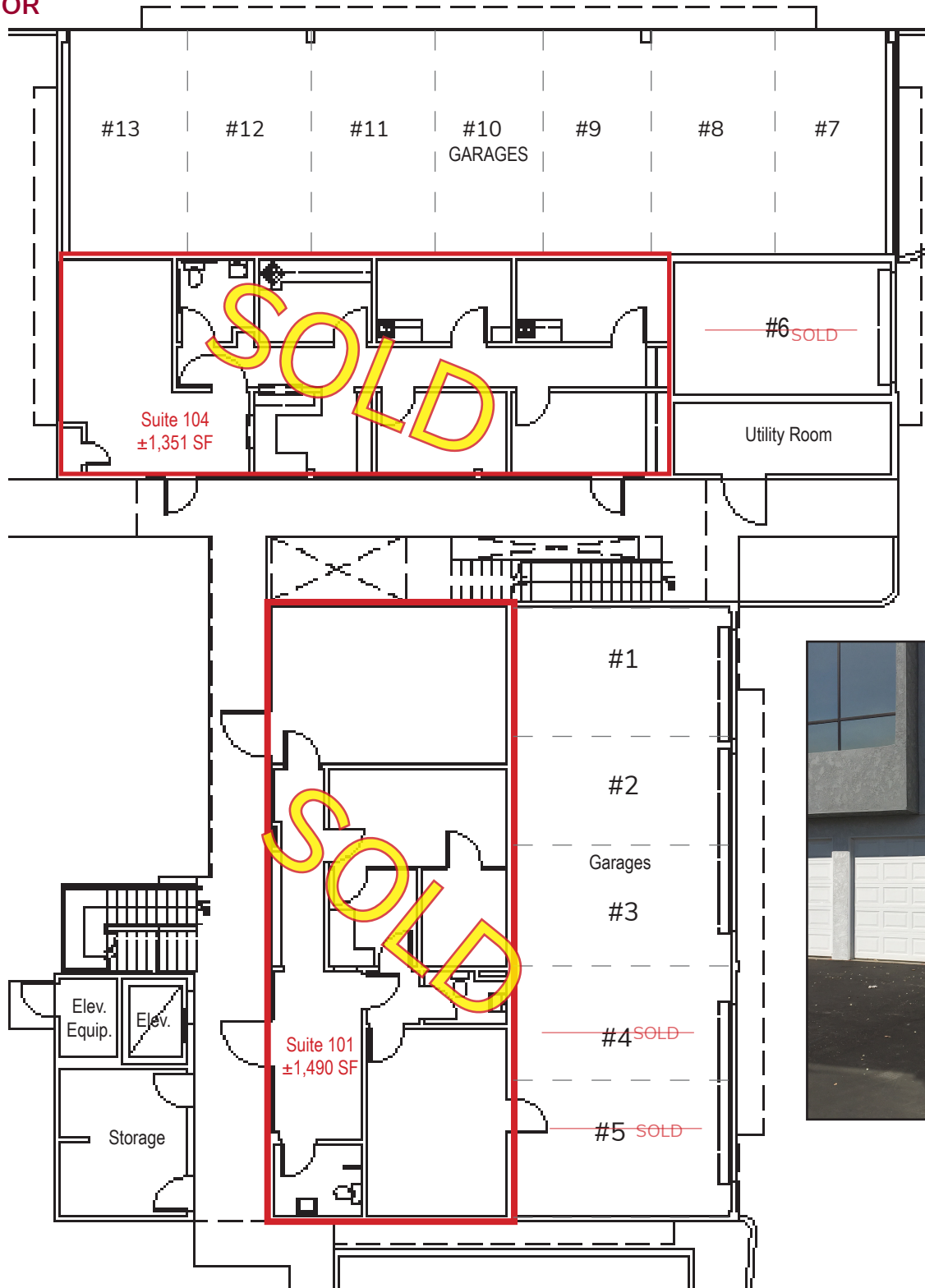
FOR SALE

510

±2,858 SF MEDICAL/OFFICE CONDO

N. 13TH AVENUE, UPLAND, CA 91786

FIRST FLOOR



FOR MORE INFORMATION PLEASE CONTACT:

Jeff Bischofberger
Senior Vice President/Principal
D • 909.373.2708
E • jbischof@lee-assoc.com
DRE #01512151

Greg Martin
Senior Vice President/Principal
D • 909.373.2904
E • gmartin@lee-assoc.com
DRE #01001749

Lee & Associates® - Ontario
3535 Inland Empire Blvd, Ontario, CA 91764
909.989.7771 | lee-assoc.com
Corp ID 00976995

All information furnished regarding property for sale, rental or financing is from sources deemed reliable, but no warranty or representation is made to the accuracy thereof and same is submitted to errors, omissions, change of price, rental or other conditions prior to sale, lease or financing or withdrawal without notice. No liability of any kind is to be imposed on the broker herein.

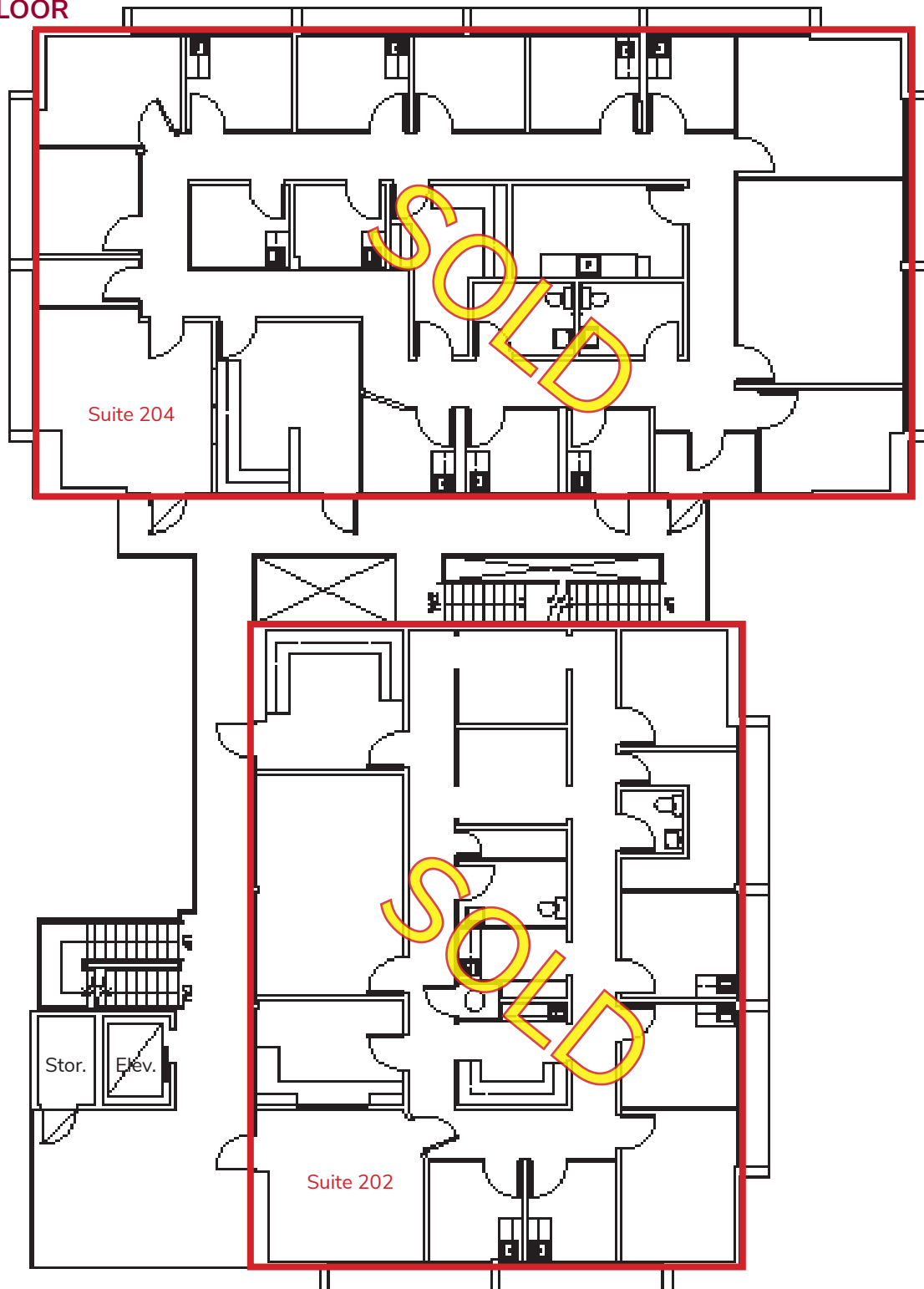
FOR SALE

510

±2,858 SF MEDICAL/OFFICE CONDO

N. 13TH AVENUE, UPLAND, CA 91786

SECOND FLOOR



FOR MORE INFORMATION PLEASE CONTACT:

Jeff Bischofberger
Senior Vice President/Principal
D • 909.373.2708
E • jbischof@lee-assoc.com
DRE #01512151

Greg Martin
Senior Vice President/Principal
D • 909.373.2904
E • gmartin@lee-assoc.com
DRE #01001749



All information furnished regarding property for sale, rental or financing is from sources deemed reliable, but no warranty or representation is made to the accuracy thereof and same is submitted to errors, omissions, change of price, rental or other conditions prior to sale, lease or financing or withdrawal without notice. No liability of any kind is to be imposed on the broker herein.

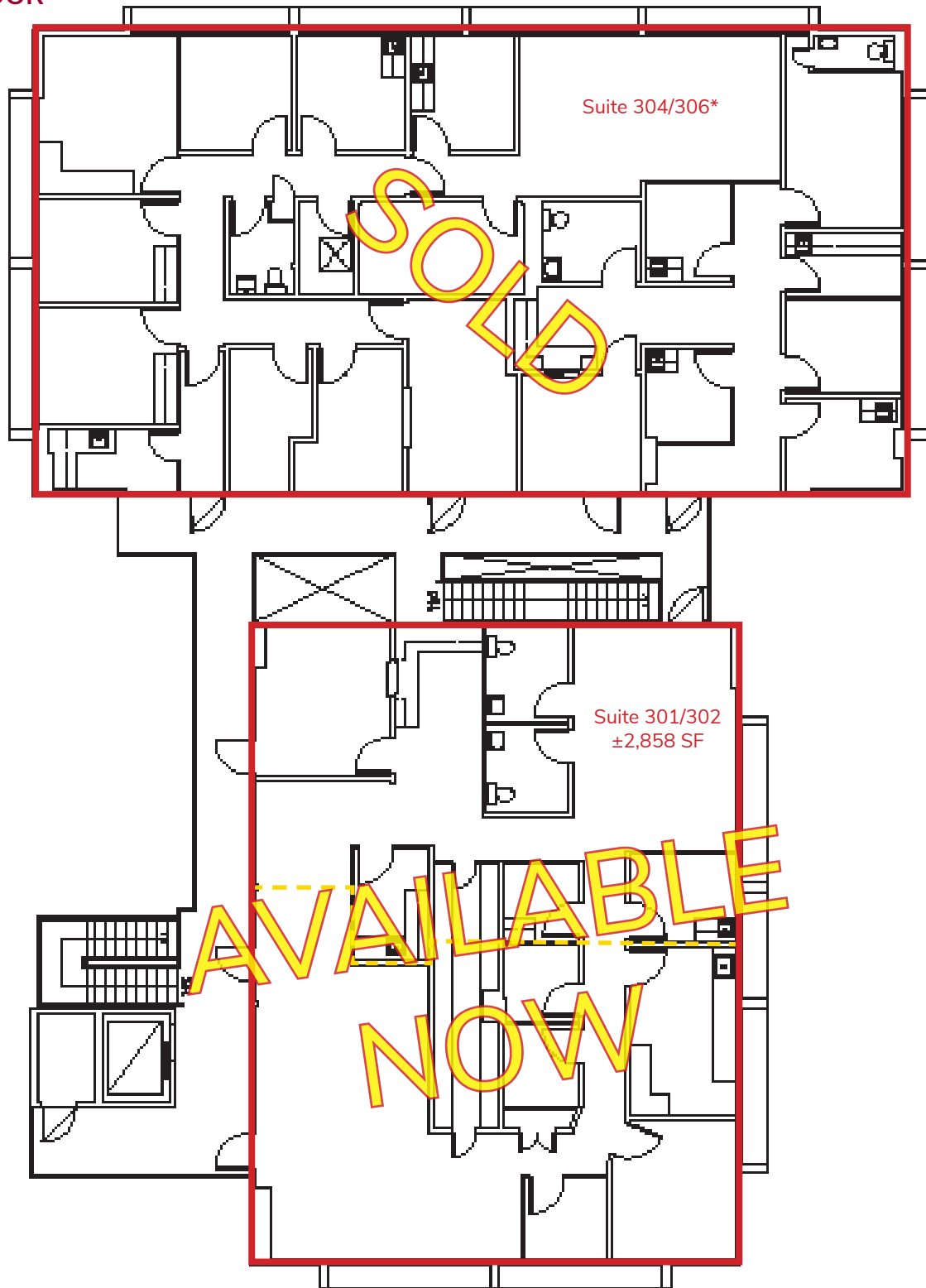
FOR SALE

510

±2,858 SF MEDICAL/OFFICE CONDO

N. 13TH AVENUE, UPLAND, CA 91786

THIRD FLOOR



FOR MORE INFORMATION PLEASE CONTACT:

Jeff Bischofberger
Senior Vice President/Principal
D • 909.373.2708
E • jbischof@lee-assoc.com
DRE #01512151

Greg Martin
Senior Vice President/Principal
D • 909.373.2904
E • gmartin@lee-assoc.com
DRE #01001749



All information furnished regarding property for sale, rental or financing is from sources deemed reliable, but no warranty or representation is made to the accuracy thereof and same is submitted to errors, omissions, change of price, rental or other conditions prior to sale, lease or financing or withdrawal without notice. No liability of any kind is to be imposed on the broker herein.