

The Village at Town Center

Route 516 & Cottrell Rd | OLD BRIDGE, NJ

AVAILABLE FOR LEASE



- 1,567 SF retail space
- 1,425 SF 2nd floor office space
- Mixed-use and office upscale neighborhood convenience center located in the heart of Old Bridge
- Centrally located at the corner of Route 516 and Cottrell Road
- Anchored by a free standing Rite Aid, Dunkin Donuts, Provident Bank, and Ponte Vecchio Italian Seafood Grill
- Colonial-style architecture with a courtyard for outdoor dining



For more information, please contact:

Joel Dicker
908.610.8488 • joel@bennettrealtyllc.com

Bennett Realty & Development LLC • Licensed Real Estate Brokers NJ, NY, CT • 24 S Holmdel Road, Holmdel, NJ 07733 • 732.837.4060 • www.bennettrealtyllc.com
ALTHOUGH ALL INFORMATION REGARDING PROPERTY FOR SALE, RENTAL OR FINANCING IS FROM SOURCES DEEMED RELIABLE SUCH INFORMATION HAS NOT BEEN VERIFIED, AND NO EXPRESS REPRESENTATION IS MADE NOR IS ANY TO BE IMPLIED AS TO THE ACCURACY THEREOF, AND IT IS SUBMITTED SUBJECT TO ERRORS, OMISSIONS, CHANGE OF PRICE, RENTAL OR OTHER CONDITIONS, PRIOR SALE, LEASE OR FINANCING, OR WITHDRAWAL WITHOUT NOTICE.

bennett
REALTY & DEVELOPMENT

Site Plan

Route 516 & Cottrell Rd | OLD BRIDGE, NJ



For more information, please contact:

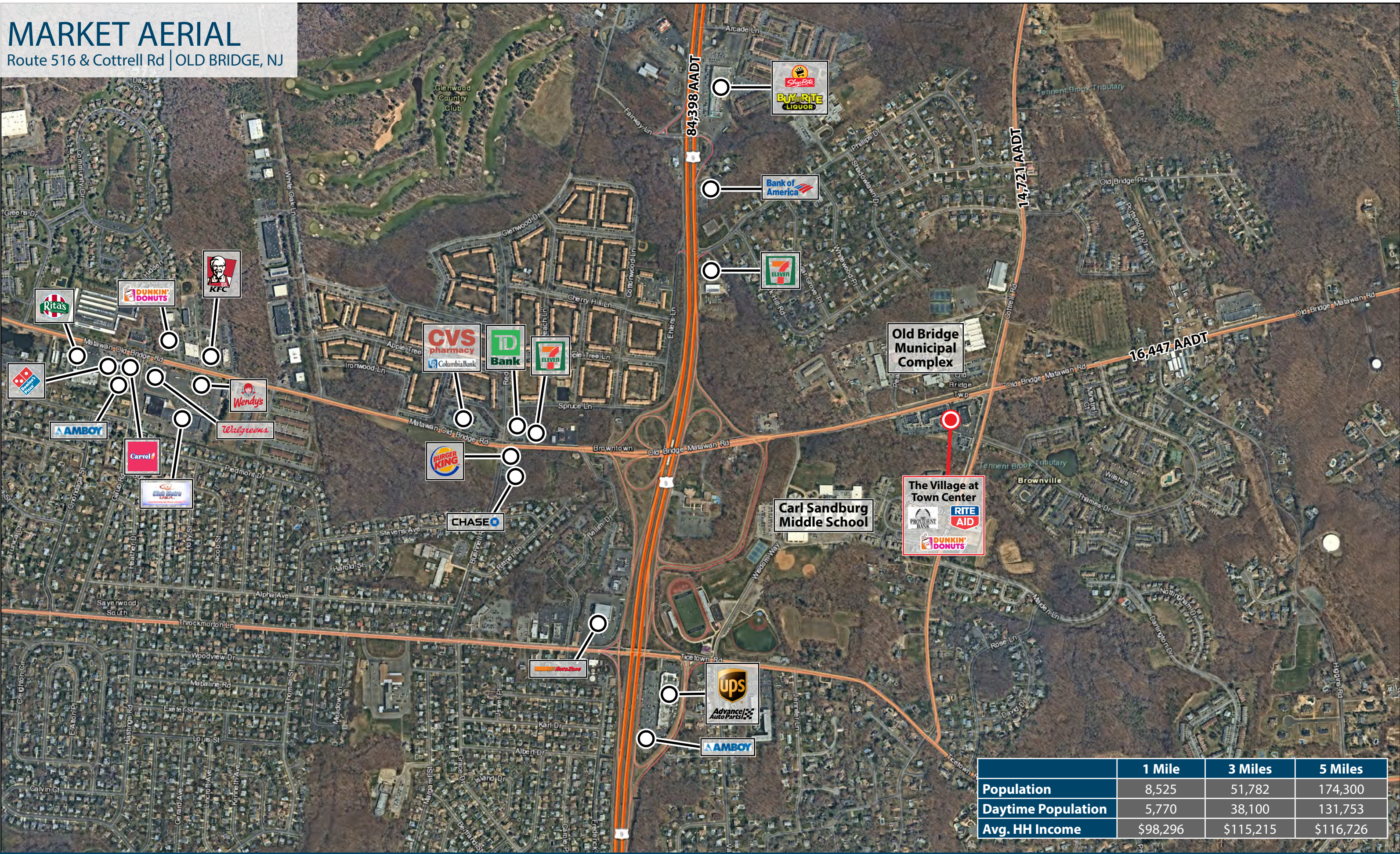
Joel Dicker
908.610.8488 • joel@bennettrealtyllc.com

Bennett Realty & Development LLC • Licensed Real Estate Brokers NJ, NY, CT • 24 S Holmdel Road, Holmdel, NJ 07733 • 732.837.4060 • www.bennettrealtyllc.com
ALTHOUGH ALL INFORMATION REGARDING PROPERTY FOR SALE, RENTAL OR FINANCING IS FROM SOURCES DEEMED RELIABLE SUCH INFORMATION HAS NOT BEEN VERIFIED, AND NO EXPRESS REPRESENTATION IS MADE NOR IS ANY TO BE IMPLIED AS TO THE ACCURACY THEREOF, AND IT IS SUBMITTED SUBJECT TO ERRORS, OMISSIONS, CHANGE OF PRICE, RENTAL OR OTHER CONDITIONS, PRIOR SALE, LEASE OR FINANCING, OR WITHDRAWAL WITHOUT NOTICE.

bennett
REALTY & DEVELOPMENT

MARKET AERIAL

Route 516 & Cottrell Rd | OLD BRIDGE, NJ



	1 Mile	3 Miles	5 Miles
Population	8,525	51,782	174,300
Daytime Population	5,770	38,100	131,753
Avg. HH Income	\$98,296	\$115,215	\$116,726