

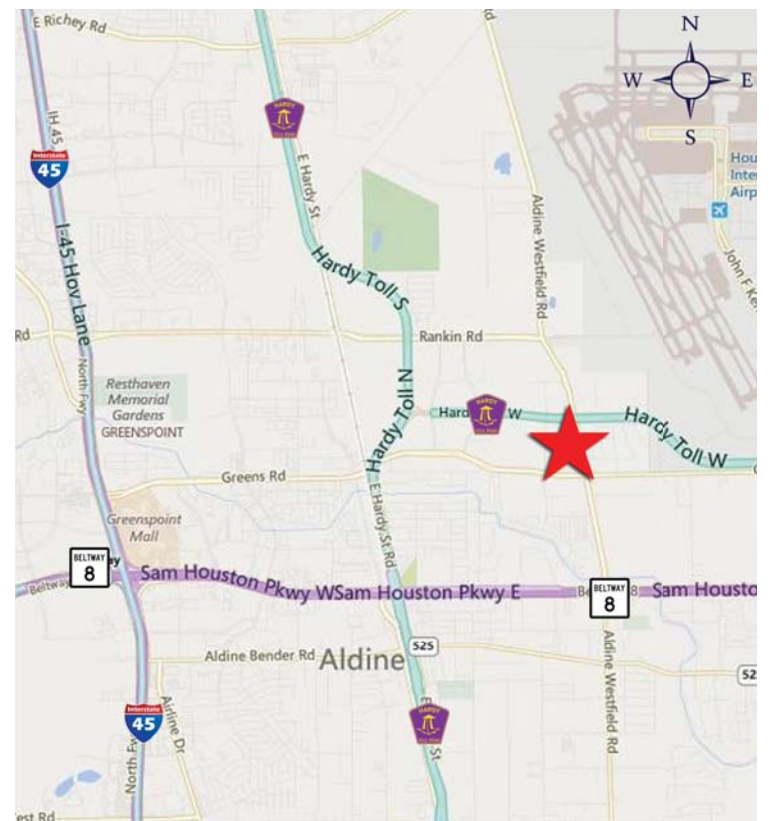
For Lease

16226 Waverly Dr. Houston, Texas 77032



PROPERTY OVERVIEW

Total SF:	±5,000 SF
Office:	±3,200 SF
Warehouse:	±1,800 SF
Land:	±0.75 Acres
Loading:	Two (2) 10'x12' Overhead Doors
400' of Frontage on Hardy Toll Rd. Connector	
Built in 2000	
Lease Rate:	\$4,000.00/Mo. NNN



15120 Northwest Freeway
Suite 190
Houston, Texas 77040
P 713.744.7400
F 832.564.1895

For more information contact:

Thomas Leger
tleger@lee-associates.com
D 713.744.7430

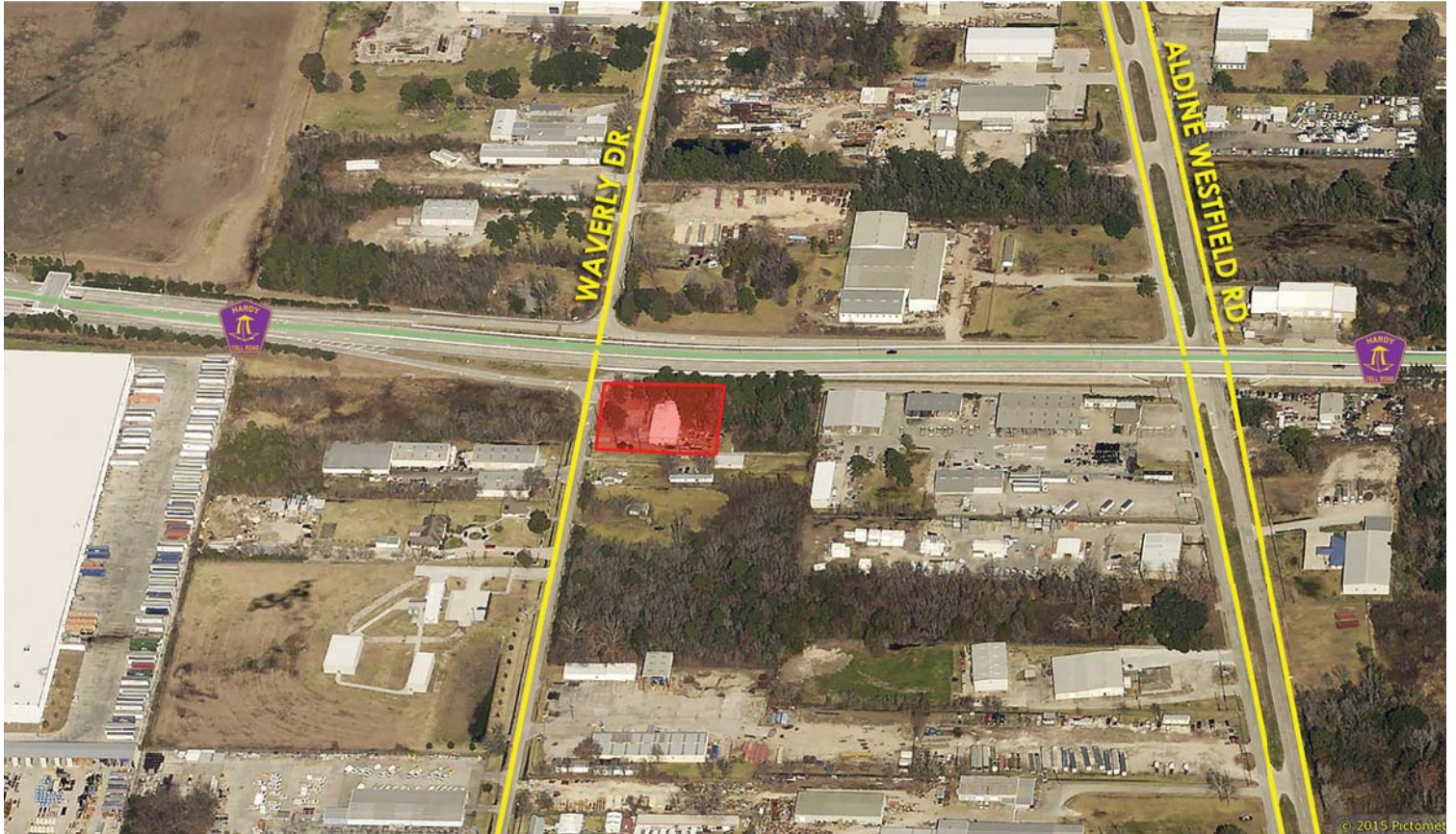
Mike Spears, SIOR, CCIM
mspears@lee-associates.com
D 713.744.7404

lee-associates.com



For Lease

16226 Waverly Dr.
Houston, Texas 77032



All information furnished regarding property for sale, rental or financing is from sources deemed reliable, but no warranty or representation is made to the accuracy thereof and same is submitted to errors, omissions, change of price, rental or other conditions prior to sale, lease or financing or withdrawal without notice. No liability of any kind is to be imposed on the broker herein.



15120 Northwest Freeway
Suite 190
Houston, Texas 77040
P 713.744.7400
F 832.564.1895

For more information contact:

Thomas Leger
tleger@lee-associates.com
D 713.744.7430

Mike Spears, SIOR, CCIM
mspears@lee-associates.com
D 713.744.7404

lee-associates.com

