



245 WEST 29TH STREET, New York, NY 10001



99,588.00 SF

Up to 9,894 SF Available

Office building with street-level retail
24 hour access, concrete floors and
easy access to Bus Lines, Metro/Subway
Built: 1929 Architect: Julius Eckmann

Tenants

QUICK RESPONSE SERVICE, INC.
METARHYTHM, INC.
RON WENDT DESIGN, LTD.
PAUL GELSOBELLO, an individual
BUCK MOORHEAD ARCHITECT

For more information call

1- 212- 249- 1550

KOEPEL ROSEN

40 East 69th Street

New York, NY 10021

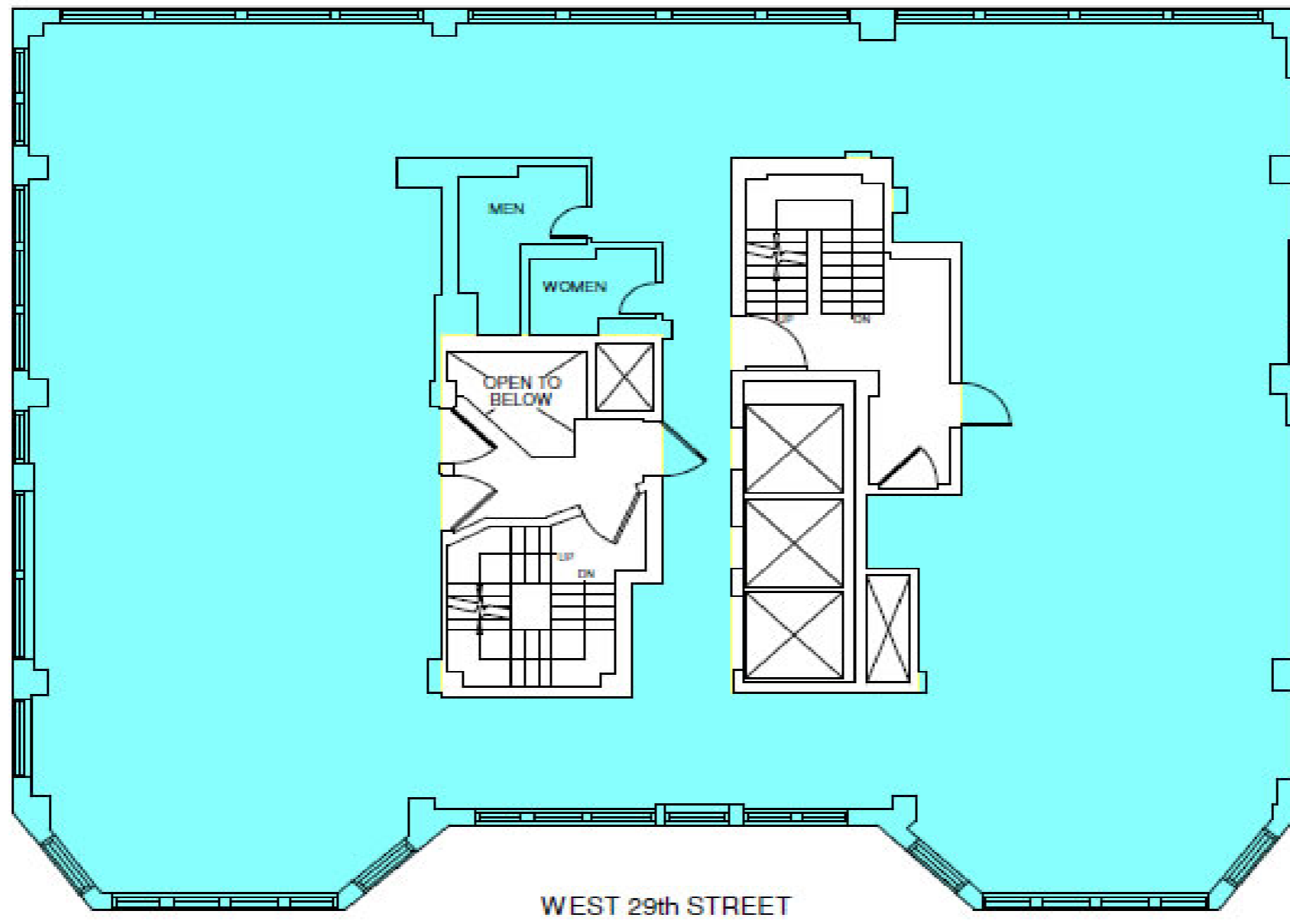
dkoeppel@koeppelrosen.com

245 WEST 29TH STREET, New York, NY 10001

245 West 29th Street



Typical Floor Plan



 **Koeppel Rosen LLC**
 40 East 69th Street
 New York, NY 10021
 212-249-1550
 www.koeppe Rosen.com

Note: All dimensions and conditions are approximate and for information only

Scale: NTS
Date: February 18, 2016



For more information call
 1- 212- 249- 1550
 KOEPEL ROSEN
 40 East 69th Street
 New York, NY 10021
 dkoeppe l@koeppe Rosen.com