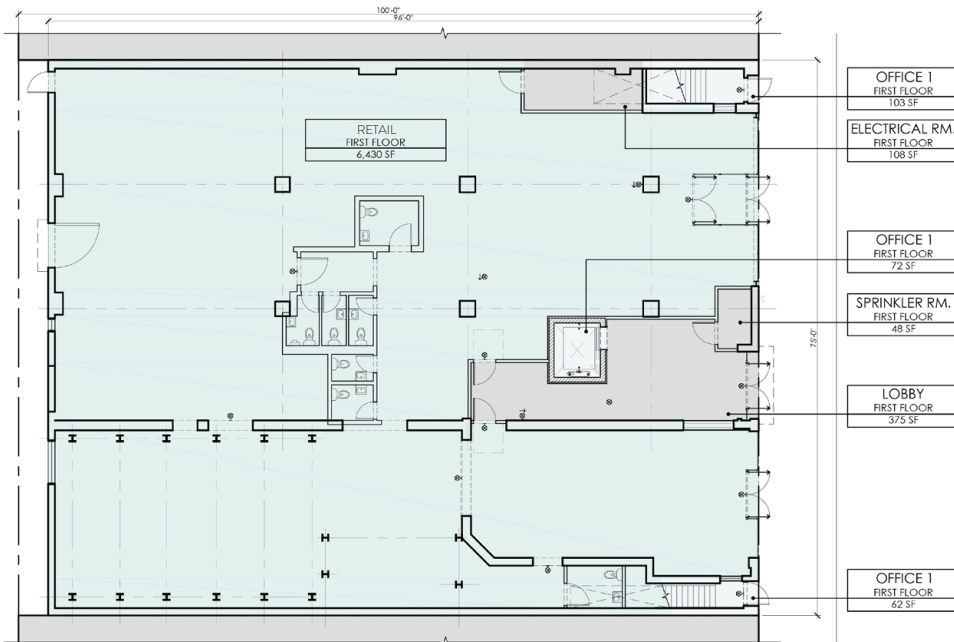


ASANA PARTNERS

# 70 North 6th St williamsburg

BROOKLYN | NY



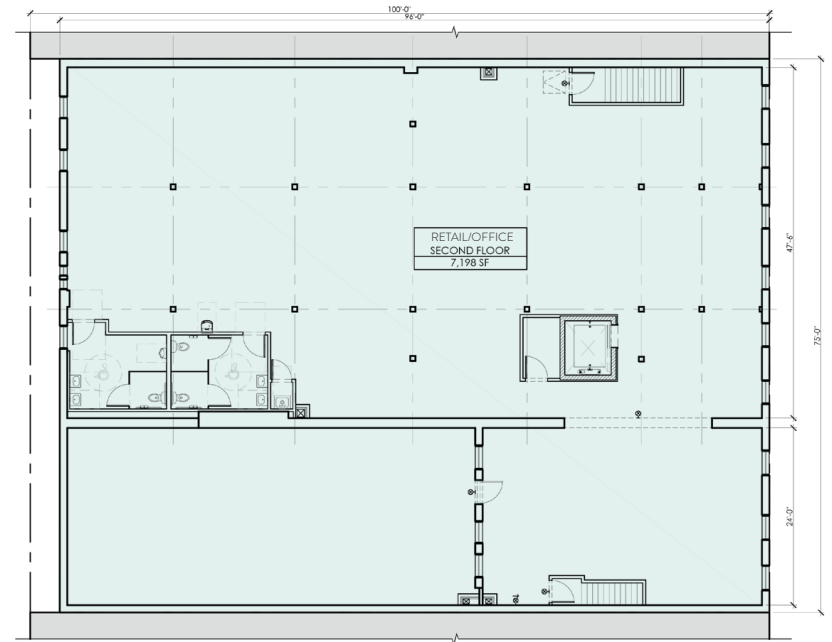


**GROUND FLOOR\***

RETAIL - 6,430 SF

OFFICE - 237 SF

COMMON - 531 SF



**SECOND FLOOR\***

RETAIL/OFFICE - 7,198 SF

\*OWNERSHIP WILL CONSIDER ALL LOGICAL DIVISIONS

# The Neighborhood



<p>Ride Brooklyn Red White and Green Wine and Spirits</p> <p>smartertoddler</p> <p>N6 ST</p> <p>SLT</p> <p>Fabbrica</p> <p>CVS pharmacy</p>	<p>Central Pharmacy</p> <p>KENT AVE</p> <p>ARTISTS &amp; FLEASH <small>artist, designer and vintage market</small></p> <p>Rosarito Fishshack Mezeal Tequila Bar</p> <p>s a n d r o</p> <p>maje</p>	<p>N7 ST</p> <p>House of Small Wonder</p> <p>credo</p> <p>marine layer</p> <p>Sweetwater</p>	<p>ups</p> <p>CITYMD NEW YORK'S URGENT CARE</p> <p>Arthichoke Pizza</p> <p>Partners COFFEE ROASTERS</p> <p>lululemon</p> <p>athletica</p> <p>Dziupla</p> <p>Surf Bar</p> <p>BEDFORD AVE</p>
<p>drybar</p> <p>70 North 6th</p> <p>Original Music Workshop at National Sawdust</p> <p>Brooklyn Harvest Market</p>	<p>The Pok'e</p> <p>meq</p> <p>Original Music Workshop at National Sawdust</p> <p>Northwell Health</p> <p>GoHealth</p> <p>URGENT CARE</p> <p>DIME</p> <p>ovenly</p> <p>MUJI</p> <p>WYTHE AVE</p>	<p>ÅLAND</p> <p>URBAN OUTFITTERS</p> <p>EVERLANE</p> <p>SEA</p> <p>LE LABO GRASSE - NEW YORK</p> <p>GENERAL</p> <p>N5 ST</p>	<p>THE NORTH FACE</p> <p>MARIANELLA</p> <p>Brooklyn Fox Lingerie</p> <p>Red Pearl</p> <p>Red Bowl</p> <p>Delaware &amp; Hudson</p> <p>Pure Lion Lighting</p> <p>juice GENERATION</p> <p>PIZZA</p> <p>DIME</p> <p>Juliette</p> <p>BERRY ST</p>



EVERLANE



LE LABO  
GRASSE - NEW YORK



Madswell



marine layer

maje

s a n d r o

SEPHORA

VANS

WARBY PARKER



For more information please contact exclusive agents:

Matthew Krell [mkrell@ngkf.com](mailto:mkrell@ngkf.com) 212.372.2254

Tyler King [tyler.king@ngkf.com](mailto:tyler.king@ngkf.com) 212.309.2822

