

PROPERTY FOR SALE

1130 S Philadelphia Blvd
Aberdeen, MD



- Sale Price: \$299,000
 - Acreage: 0.85+/- Acre
 - Zoning: General Commercial
 - Tax Parcel Number: 00580003D0530
 - Demographics
- | | 1 mile | 3 miles | 5 miles |
|-----------------|--------|---------|---------|
| Population 2013 | 1,440 | 24,490 | 45,050 |
| Med Income 2013 | 63,104 | 59,937 | 66,702 |

Property was previously used as a gas station.



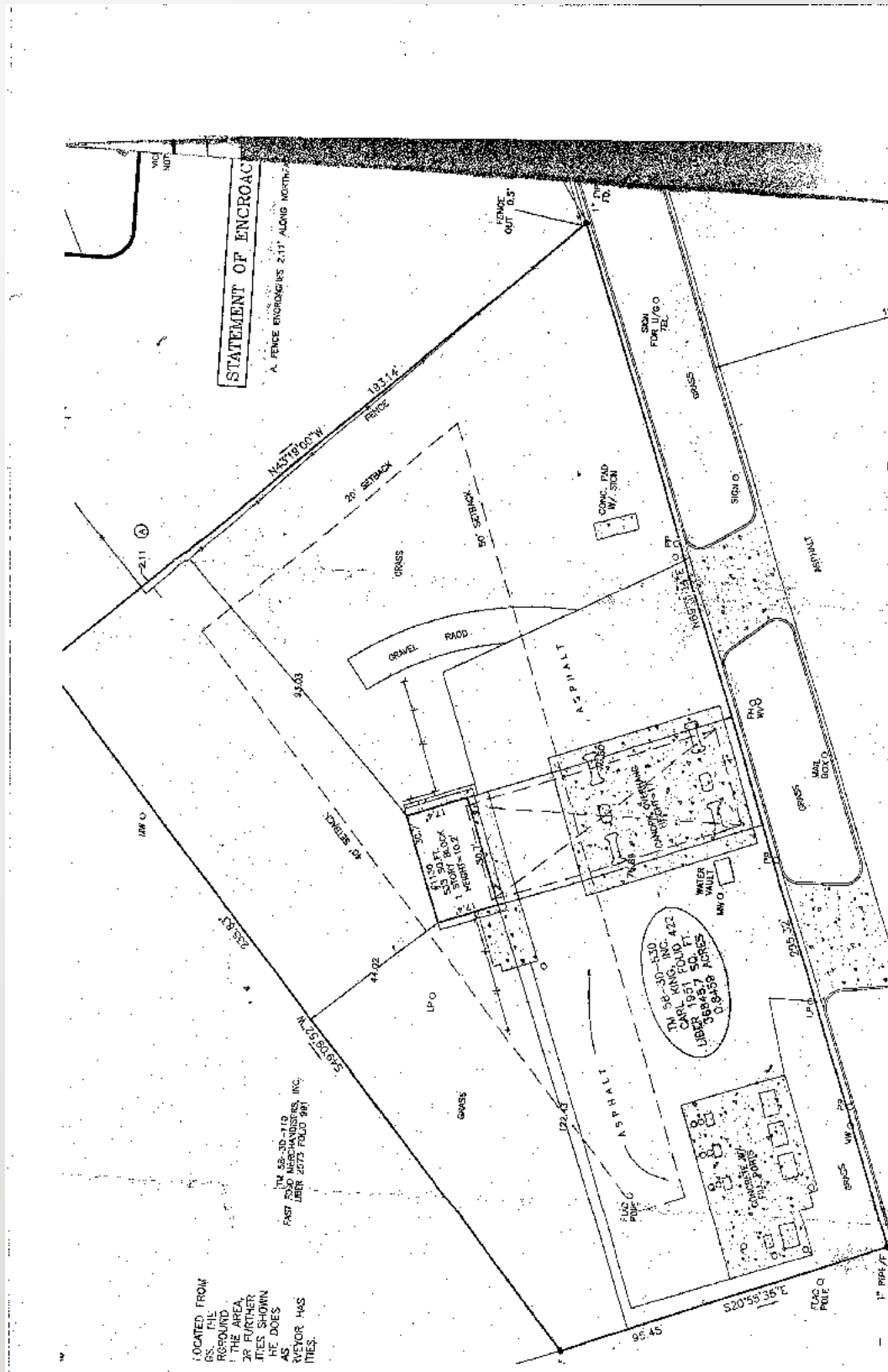
FOR MORE INFORMATION PLEASE CONTACT:

Keith Walpole
302-674-3400
keithwalpole@yahoo.com

46 S State Street
Dover, DE 19901
302-674-3400 Office
302-674-8479 Fax

www.randrcommercialrealty.com

PROPERTY FOR SALE
1130 S Philadelphia Blvd
Aberdeen, MD



All information contained herein is believed to be accurate, however was obtained from third parties and R&R Commercial Realty, Inc. does not warrant as to the accuracy submitted subject to changes or modification without notice. Listing Broker represents the Sellers interest.