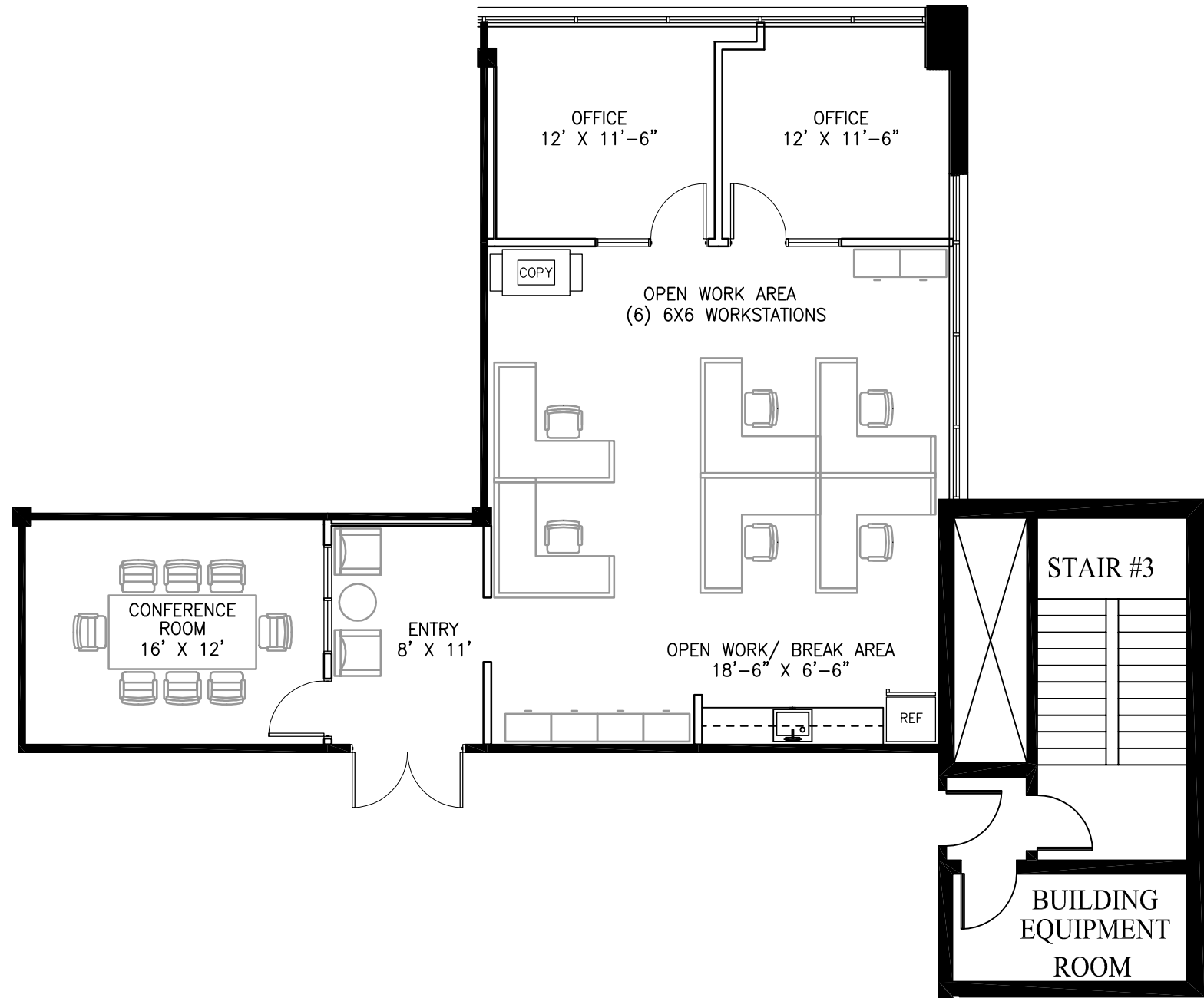


5080 Spectrum Drive  
Suite 115 East  
Addison, TX 75001  
T: 972.385.3991  
interprisedesign.com

**106 DECKER COURT**

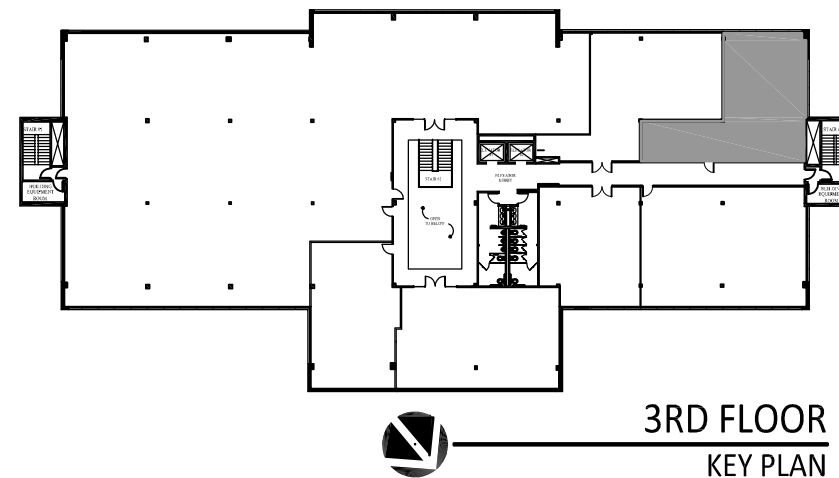
106 DECKER COURT  
IRVING, TX 75062

| NO | ISSUED FOR:         | DATE     |
|----|---------------------|----------|
|    | REVIEW/APPROVAL     | 03-13-19 |
|    | PRICING             |          |
|    | ENGINEERING         |          |
|    | TAS REVIEW          |          |
|    | BID                 |          |
|    | PERMIT/CONSTRUCTION |          |



| WALL LEGEND |                                       |
|-------------|---------------------------------------|
| SYMBOL      | DESCRIPTION                           |
|             | NEW BUILDING STANDARD WALL TO CEILING |
|             | EXISTING WALL TO REMAIN               |
|             | GLASS IN BUILDING STANDARD FRAME      |
|             | NEW WALL TO DECK WITH INSULATION      |

\*\*ALL ROOM SIZES ARE APPROXIMATE\*\*



**3RD FLOOR  
KEY PLAN**

**SARAH M. RUEB**  
TEXAS REGISTERED INTERIOR DESIGNER  
TBAE REGISTRATION NO. 10733  
03-13-19  
NOT TO BE USED FOR  
REGULATORY APPROVAL,  
PERMIT OR CONSTRUCTION.

**SPEC SUITE  
SUITE 320**

| TITLE      | SCALE      |
|------------|------------|
| SPACE PLAN | 1/8"=1'-0" |
| DATE       | 03-13-19   |
| DRAWN BY   | CS         |
| CHECKED BY | SMH/KLC    |
| RF         | N/A        |
| PROJ NO    | 1,683      |
| SHEET NO   | 39069      |



**SP#1**