



Office Space Available

# FOR LEASE

200 New Stine Road ■ Bakersfield, CA



## Property Features

- Professionally maintained and managed by MD Atkinson Company
- Recent exterior remodel includes new building fascia and monument signage.
- Just off of the California Avenue and Stockdale Highway intersection, which is one of the City's most heavily trafficked intersections.

**Martin J. Starr** ■ Principal ■ 661 616 3567 ■ [mjstarr@asuassociates.com](mailto:mjstarr@asuassociates.com) ■ CA RE #01179469

**Matthew E. Starr, SIOR, CCIM** ■ Principal ■ 661 616 3570 ■ [matthew@asuassociates.com](mailto:matthew@asuassociates.com) ■ CA RE #01367855

11601 Bolthouse Drive Suite 110 ■ Bakersfield, CA 93311 ■ 661 862 5454 main ■ 661 862 5444 fax

*The information contained herein may have been obtained from sources other than ASU Commercial. We have not verified such information and make no guarantees, warranties or representations about such information. It is your responsibility to independently confirm its accuracy and completeness prior to purchasing/leasing the property.*

# NOW LEASING ■ OFFICE SPACE AVAILABLE

200 New Stine Road ■ Bakersfield, CA

## Availability | First and Second Floor Stacking Plans

### Available Spaces

#### ■ Second Floor

Suite 120 - 1,129 Square Feet

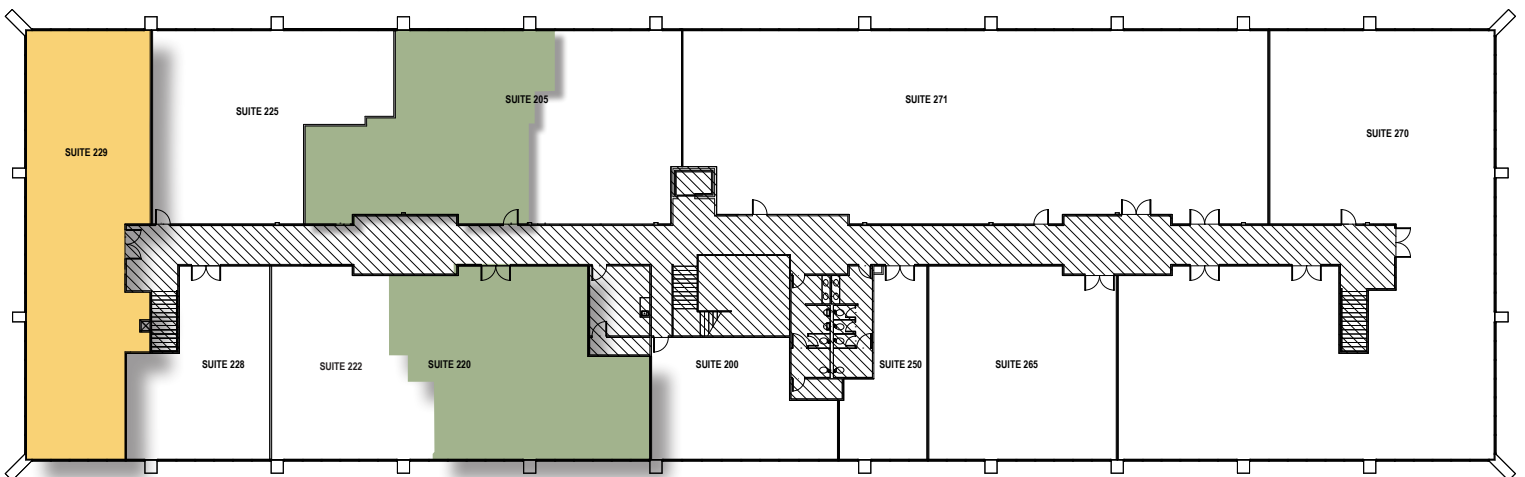
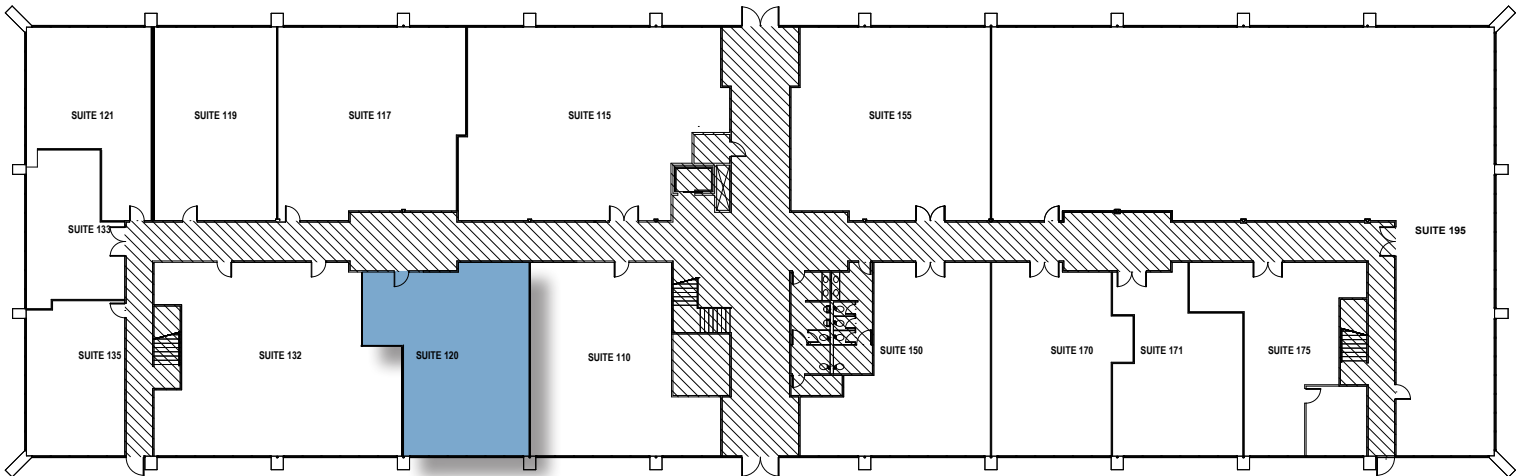
Suite 205 - 1,660 Square Feet

Suite 220 - 1,817 Square Feet

Suite 229 - 2,255 Square Feet

■ \$1.40 psf excluding utilities and janitorial services

■ *Rent ready model suites with new finishes throughout*

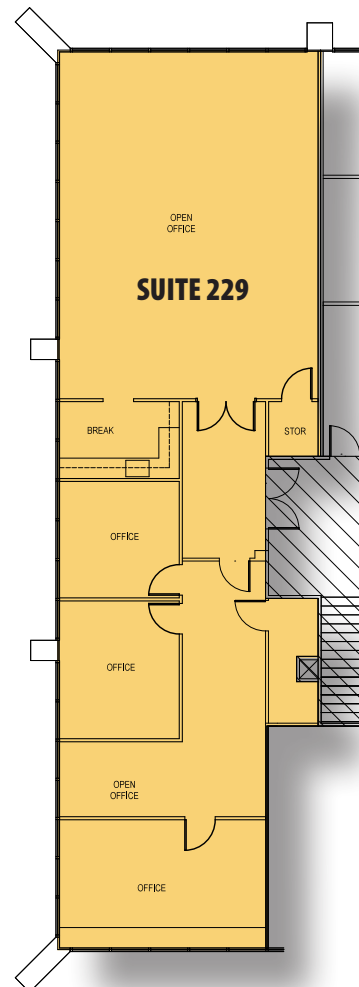
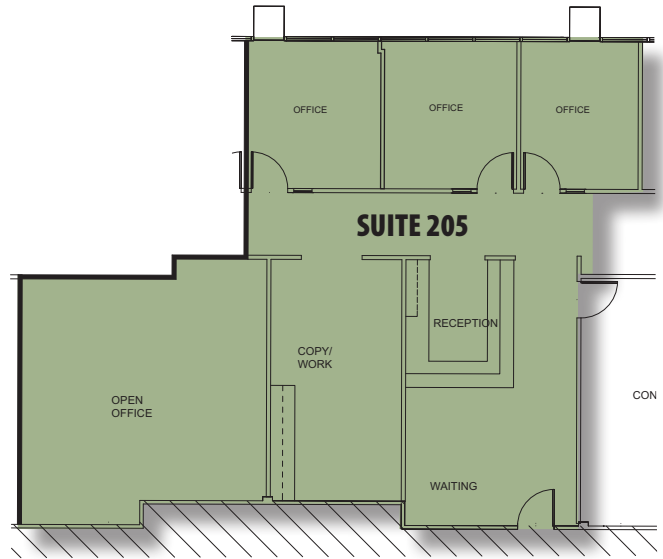
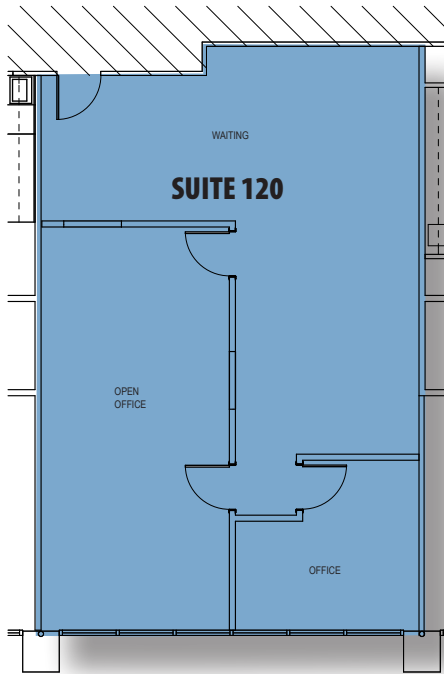


\*Plans deemed to be accurate, but not guaranteed. Plan not to scale.

# NOW LEASING ■ OFFICE SPACE AVAILABLE

200 New Stine Road ■ Bakersfield, CA

## First & Second Floor Individual Suite Floor Plans

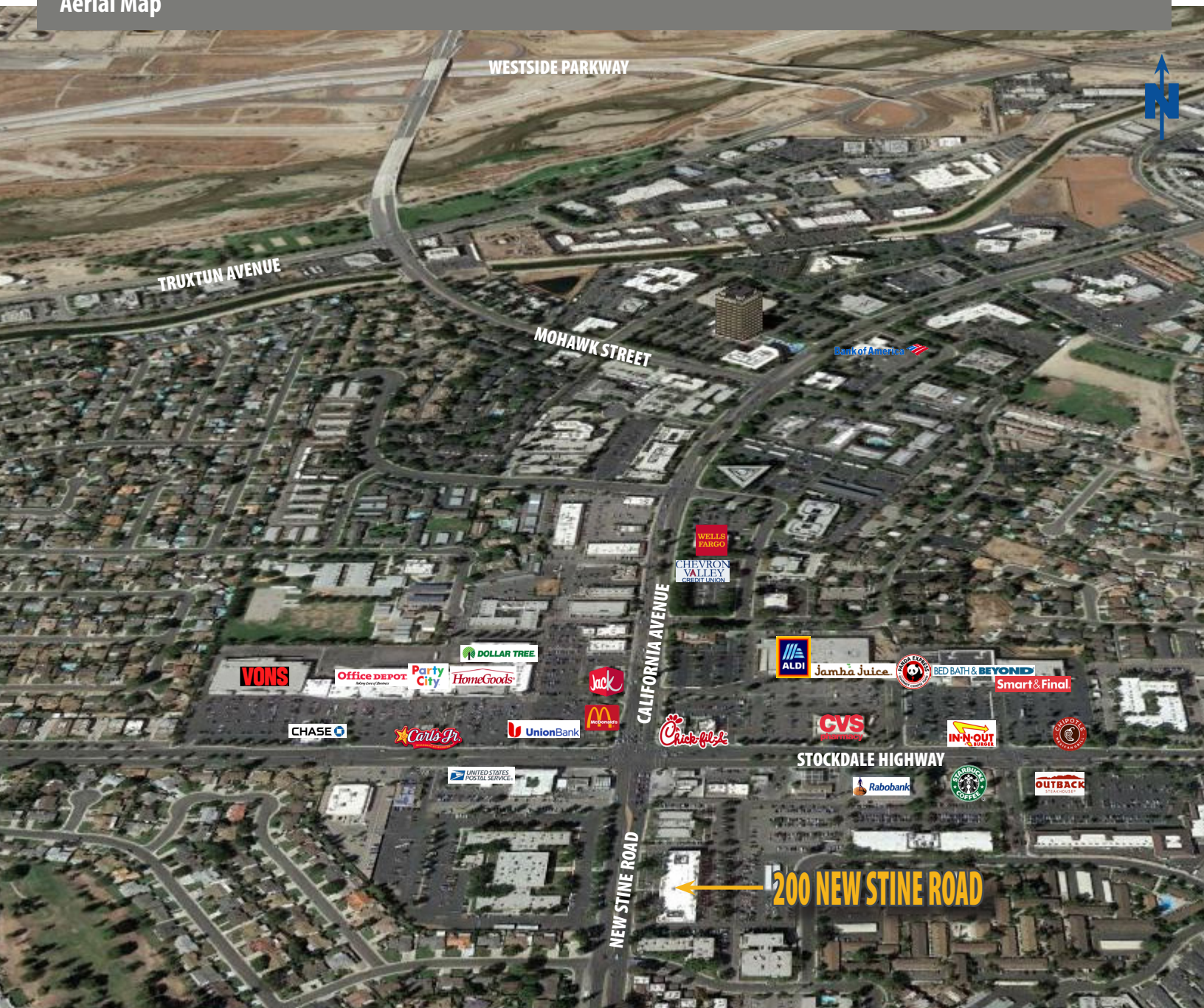


*\*Plans deemed to be accurate, but not guaranteed. Plan not to scale.*

# NOW LEASING ■ OFFICE SPACE AVAILABLE

200 New Stine Road ■ Bakersfield, CA

Aerial Map



**Martin J. Starr** ■ Principal ■ 661 616 3567 ■ [mjstarr@asuassociates.com](mailto:mjstarr@asuassociates.com) ■ CA RE #01179469  
**Matthew E. Starr, SIOR, CCIM** ■ Principal ■ 661 616 3570 ■ [matthew@asuassociates.com](mailto:matthew@asuassociates.com) ■ CA RE #01367855  
11601 Bolthouse Drive Suite 110 ■ Bakersfield, CA 93311 ■ 661 862 5454 main ■ 661 862 5444 fax

