



**360-370-015**  
**9.12 Acres**



**384-130-003**  
**4.16 Acres**

**FOR SALE**

**±13.28**

**GROSS ACRES**  
**VACANT LAND**

**CAN BE PURCHASED SEPARATELY**



**OWNER IS WILLING TO CONSIDER CARRYING A NOTE ON THE PROPERTY**

**SCOTT ROAD | MENIFEE, CA**



**GORDON C. MIZE**

**951.445.4504**

[gmize@lee-associates.com](mailto:gmize@lee-associates.com)

License #01275376

**SCOTT STEWART**

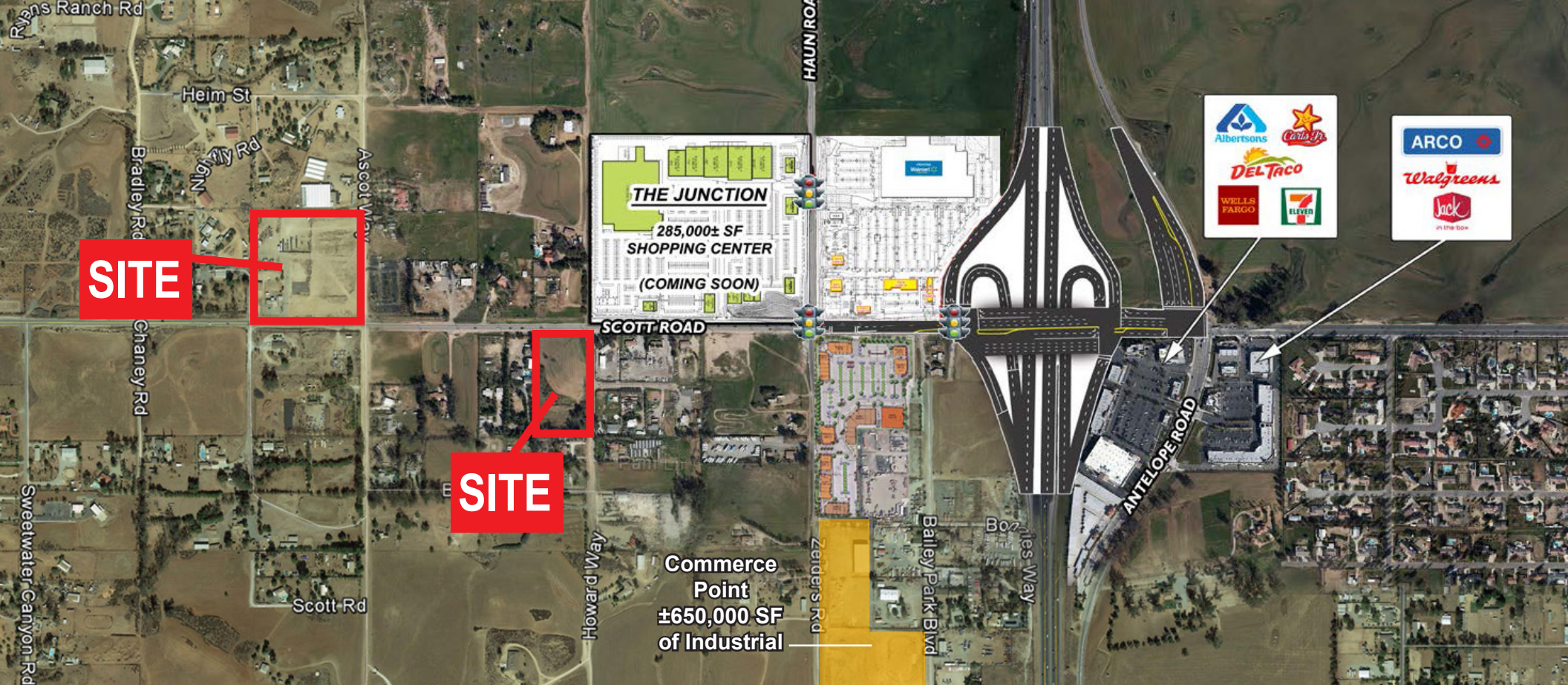
**951.445.4514**

[ssewart@lee-associates.com](mailto:ssewart@lee-associates.com)

License #1342575

No warranty or representation has been made to the accuracy of the foregoing information. Terms of sale or lease and availability are subject to change or withdrawal without notice. Lee & Associates Commercial Real Estate Services, Inc. - Riverside. 25240 Hancock Avenue, Suite 100 - Murrieta, CA 92562 | Corporate ID# 01048055





# FOR SALE ± 13.28

GROSS ACRES VACANT LAND  
SCOTT ROAD | MENIFEE, CA

**APN: 384-130-003 (4.16 ACRES)**  
**APN: 360-370-015 (9.12 ACRES)**

**SUBMIT OFFERS**



**GORDON C. MIZE**  
**951.445.4504**  
gmize@lee-associates.com  
License #01275376

**SCOTT STEWART**  
**951.445.4514**  
sstewart@lee-associates.com  
License #1342575

No warranty or representation has been made to the accuracy of the foregoing information. Terms of sale or lease and availability are subject to change or withdrawal without notice.  
Lee & Associates Commercial Real Estate Services, Inc. - Riverside. 25240 Hancock Avenue, Suite 100 - Murrieta, CA 92562 | Corporate ID# 01048055