



## ±5,248 SF Industrial Warehouse Building



±5,248 total square feet

±748 square feet of office space

Two grade level doors

17' - 19' clear height

13 parking spaces

Convenient access to Palomar Airport and I-5

Lease Rate: \$1.14 PSF MG

\$0.07 PSF CAM

### Contact

**Bob Willingham, SIOR**

858.369.3013

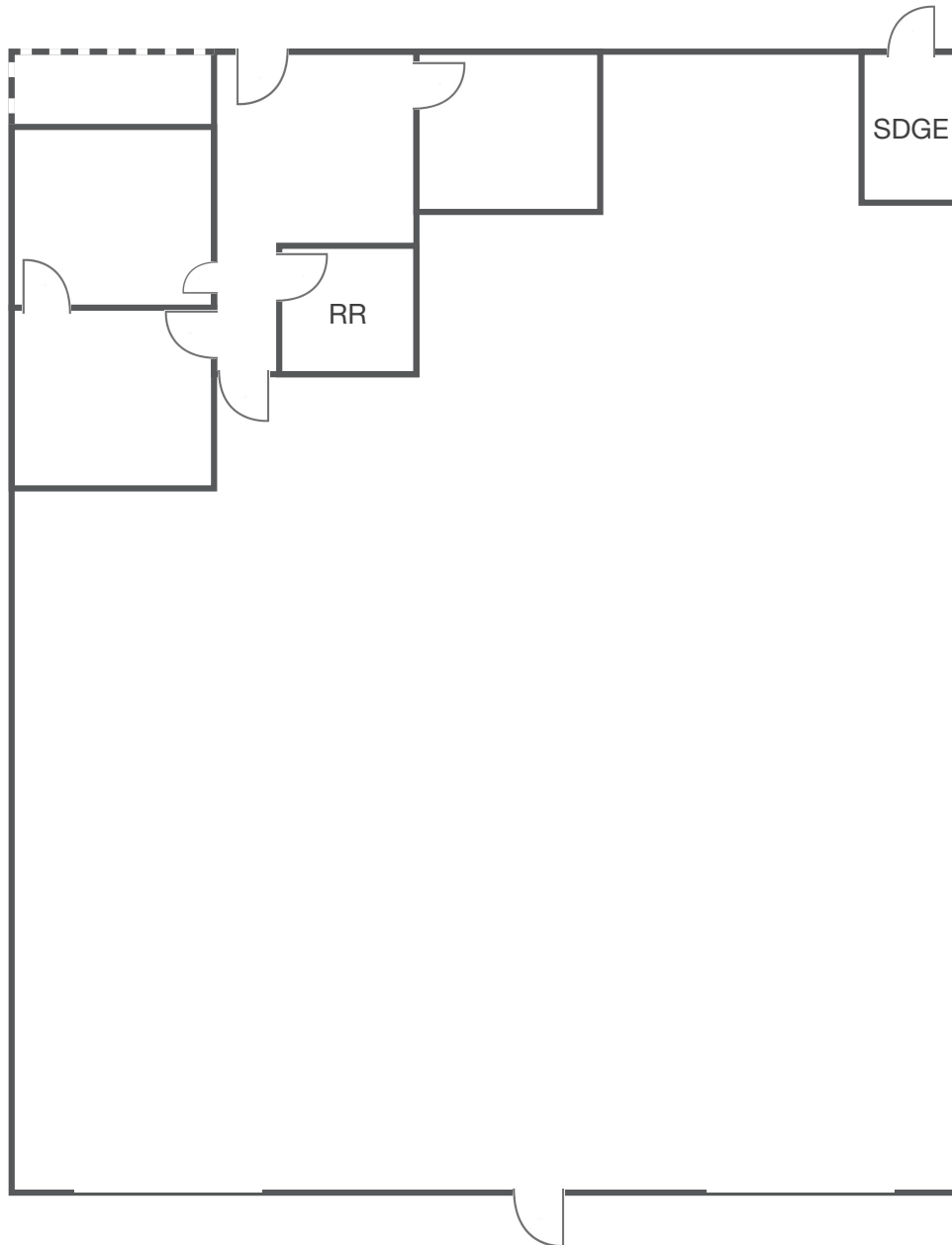
bobw@kiddermathews.com

LIC #01469841

[kiddermathews.com](http://kiddermathews.com)

# For Lease

±5,248 SF Industrial Warehouse Building



## Contact

**Bob Willingham, SIOR**

858.369.3013

bobw@kiddermathews.com

LIC #01469841

.....  
This information supplied herein is from sources we deem reliable. It is provided without any representation, warranty or guarantee, expressed or implied as to its accuracy. Prospective Buyer or Tenant should conduct an independent investigation and verification of all matters deemed to be material, including, but not limited to, statements of income and expenses. Consult your attorney, accountant, or other professional advisor.