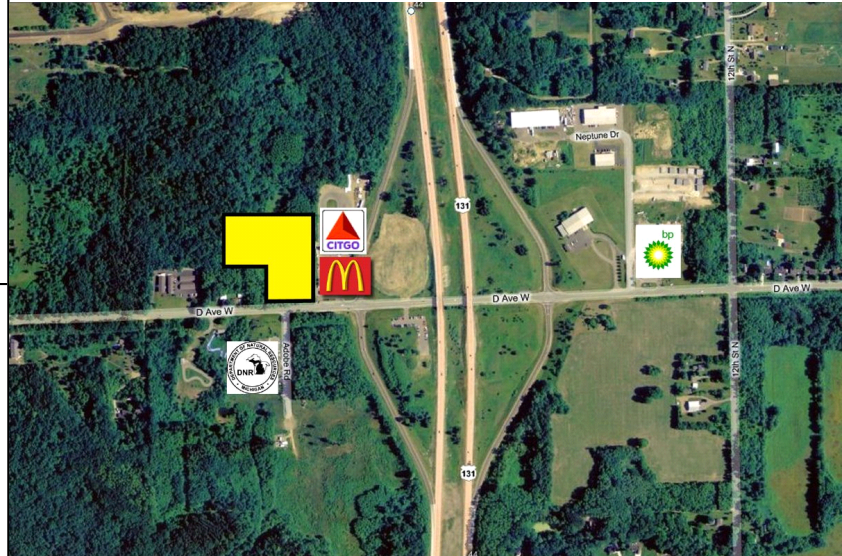


Kalamazoo County 27.25 Acres - Designated Commercial

Land
For Sale
5510 W D Avenue
Kalamazoo, Michigan

Overview:

27.25 Acre development site for commercial use located on busy D Avenue at US-131. Close proximity to the new Gun Lake Casino. Reduced to \$34,862 per acre. 500+/- sf frontage. Designated future commercial. Smaller parcels available at buyer's expense. Next to Marathon Station & McDonald's.



Information:

County:	Kalamazoo
Municipality:	Alamo Twp
Total Acres:	27.25 Acres
Lot Dimensions:	395' x 1320' x 1155' x 1006.5
Recommended Use:	Vacant Land
Zoning Code / Description:	Agricultural / Commercial - future use
Between Streets:	US131 & Owen Drive
Street Type:	Paved
Sewer / Water:	Septic / Well
Utilities Available:	Gas & Electric
Parcel #:	390113376020
RE Taxes / Year:	\$1,539.65 / 2014

Contact Information:

Joyce Wiles

(269) 384-8366 [direct]
(269) 217-6972 [mobile]
jwiles@ccmichigan.com

Sale Price:

\$950,000
Reduced from \$2,722,500.