

1540 1555 1565

RIVER PARK DRIVE
S A C R A M E N T O , C A

1540

PROPERTY HIGHLIGHTS

- Completely renovated and revitalized office park
- Excellent Proximity to numerous retail & dining amenities
- Great access to Business 80 & Highway 160
- On-site Café
- Conference facilities
- 4.00/1,000 SF Parking Ratio



SPENCER NIELSEN

Associate

+1 916 288 4531

spencer.nielsen@cushwake.com

CA LIC #01964163

KEVIN PARTINGTON

Executive Director

+1 916 288 4807

kevin.partington@cushwake.com

CA LIC #01199010

SEAN MULLEN

Director

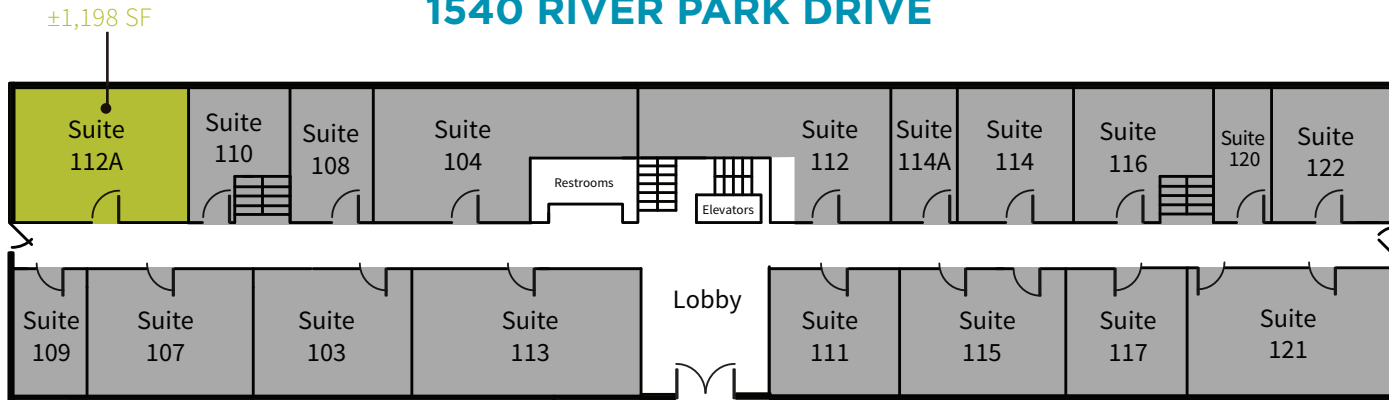
+1 916 288 4811

sean.mullen@cushwake.com

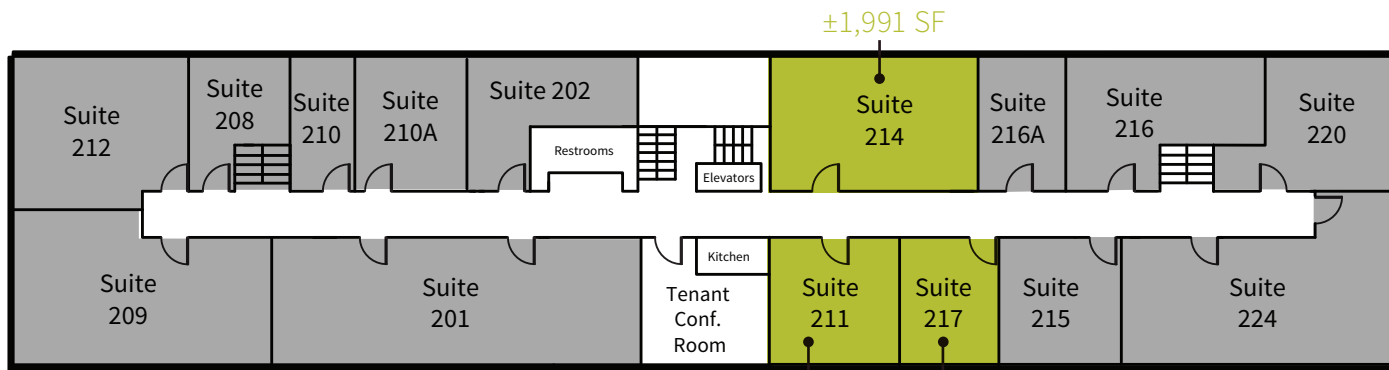
CA LIC #01845406

1540 RIVER PARK DRIVE

1ST FLOOR



2ND FLOOR



±1,054 SF ±750 SF
Available / Can combine
±1,804 SF

AVAILABLE FOR LEASE **LEASED**



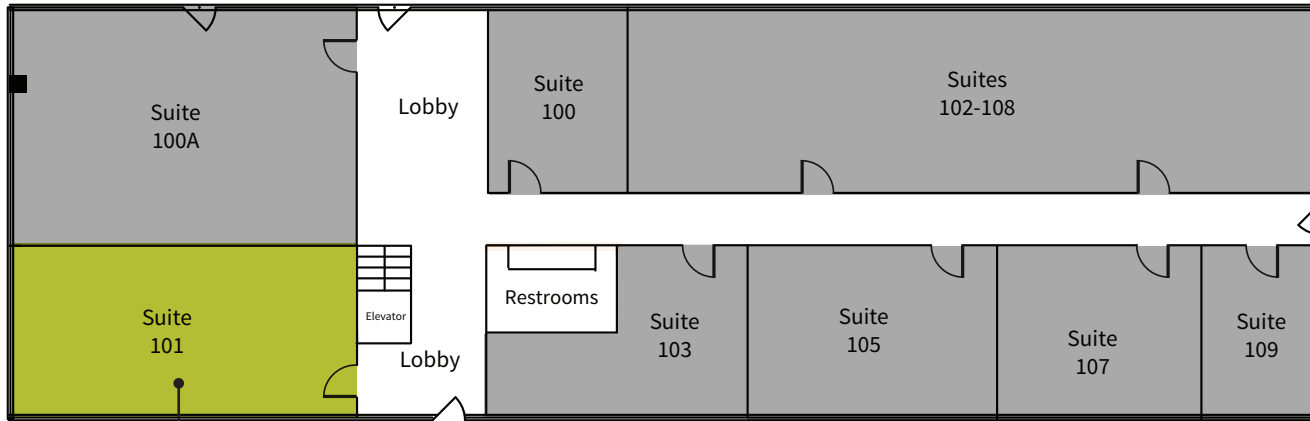
SPENCER NIELSEN
 Associate
 +1 916 288 4531
 spencer.nielsen@cushwake.com
 CA LIC #01964163

KEVIN PARTINGTON
 Executive Director
 +1 916 288 4807
 kevin.partington@cushwake.com
 CA LIC #01199010

SEAN MULLEN
 Director
 +1 916 288 4811
 sean.mullen@cushwake.com
 CA LIC #01845406

1555 RIVER PARK DRIVE

1ST FLOOR



±2,191 SF

2ND FLOOR



±719 SF

±1,192 SF

±178 SF

±249 SF

±492 SF

±178 SF

±1,162 SF

■ AVAILABLE FOR LEASE ■ LEASED



SPENCER NIELSEN
Associate
+1 916 288 4531
spencer.nielsen@cushwake.com
CA LIC #01964163

KEVIN PARTINGTON
Executive Director
+1 916 288 4807
kevin.partington@cushwake.com
CA LIC #01199010

SEAN MULLEN
Director
+1 916 288 4811
sean.mullen@cushwake.com
CA LIC #01845406

PROPERTY PHOTOS



SPENCER NIELSEN
Associate
+1 916 288 4531
spencer.nielsen@cushwake.com
CA LIC #01964163

KEVIN PARTINGTON
Executive Director
+1 916 288 4807
kevin.partington@cushwake.com
CA LIC #01199010

SEAN MULLEN
Director
+1 916 288 4811
sean.mullen@cushwake.com
CA LIC #01845406



HBA
HOWBOUTARDEN

- CENTURY THEATRES
- NORDSTROM RACK
- HOMEGOODS
- THE CONTAINER STORE
- STARBUCKS
- CARTERS
- PINKBERRY
- TOMATINA
- MOD PIZZA
- JAMBA JUICE

CAL EXPO
80+ EVENTS PER YEAR
4M+ ANNUAL VISITORS



POINT WEST
PLAZA

- KOHL'S
- OLD NAVY
- HOBBY LOBBY
- PIER 1 IMPORTS
- PETCO

ARDEN
MALL

- MACY'S
- JCPENNEY
- APPLE
- COACH
- MICHAEL KORS
- ARMANI EXCHANGE
- SEARS
- NORDSTROM
- LULUEMON
- SEASON 52
- MAGGIANO'S
- MAC

PROPERTY

MARKET
SQUARE

- UNITED ARTIST THEATRE
- BARNES & NOBLE
- CALIFORNIA PIZZA KITCHEN
- ULTA
- PLUTO'S
- URBAN OUTFITTERS



SPENCER NIELSEN
Associate
+1 916 288 4531
spencer.nielsen@cushwake.com
CA LIC #01964163

KEVIN PARTINGTON
Executive Director
+1 916 288 4807
kevin.partington@cushwake.com
CA LIC #01199010

SEAN MULLEN
Director
+1 916 288 4811
sean.mullen@cushwake.com
CA LIC #01845406

FOR MORE INFO, PLEASE CONTACT:

SPENCER NIELSEN | ASSOCIATE

+1 916 288 4531

spencer.nielsen@cushwake.com

CA LIC #01964163

KEVIN PARTINGTON | EXECUTIVE DIRECTOR

+1 916 288 4807

kevin.partington@cushwake.com

CA LIC #01199010

SEAN MULLEN | DIRECTOR

+1 916 288 4811

sean.mullen@cushwake.com

CA LIC #01845406

400 Capitol Mall, Suite 1800

Sacramento, CA 95814

+1 916 288 4800

cushmanwakefield.com

