

**us bank**



CONCEPTUAL RENDERING

 **CUSHMAN & WAKEFIELD**

ONE SEVENTY  SOUTH MAIN



**LEED Silver Building Certified**

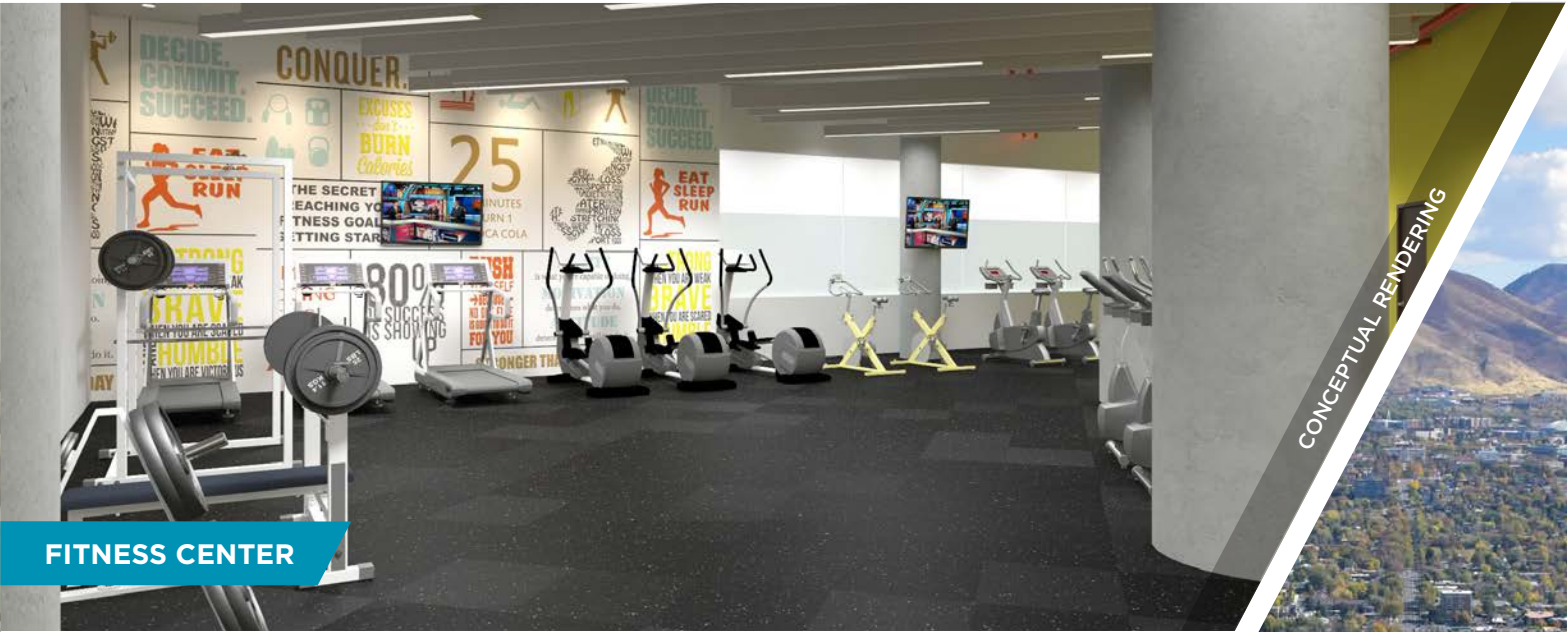


LOBBY ENTRANCE



- Lobby renovations to be completed Q1 2018. Renovations will include the main lobby, an updated gym for use of all the Tenants in the building, as well the main elevator bay.
- On-site professional property management, deli and 24-hour security
- Angled to capture dramatic views of the Wasatch Mountains and Great Salt Lake
- 420 on-site parking stalls with additional parking within one block.
- Shared conference room on the 2nd floor available to all tenants
- **BORP:** Building Occupancy Resumption Program. 170 South Main is the first building in Utah to officially implement a BORP plan.
- We are pleased to announce our newest retail Tenant, **Bagels and Greens!** Offering hand-shaped authentic bagels, fresh salads, as well as kombucha and a variety of coffee choices.





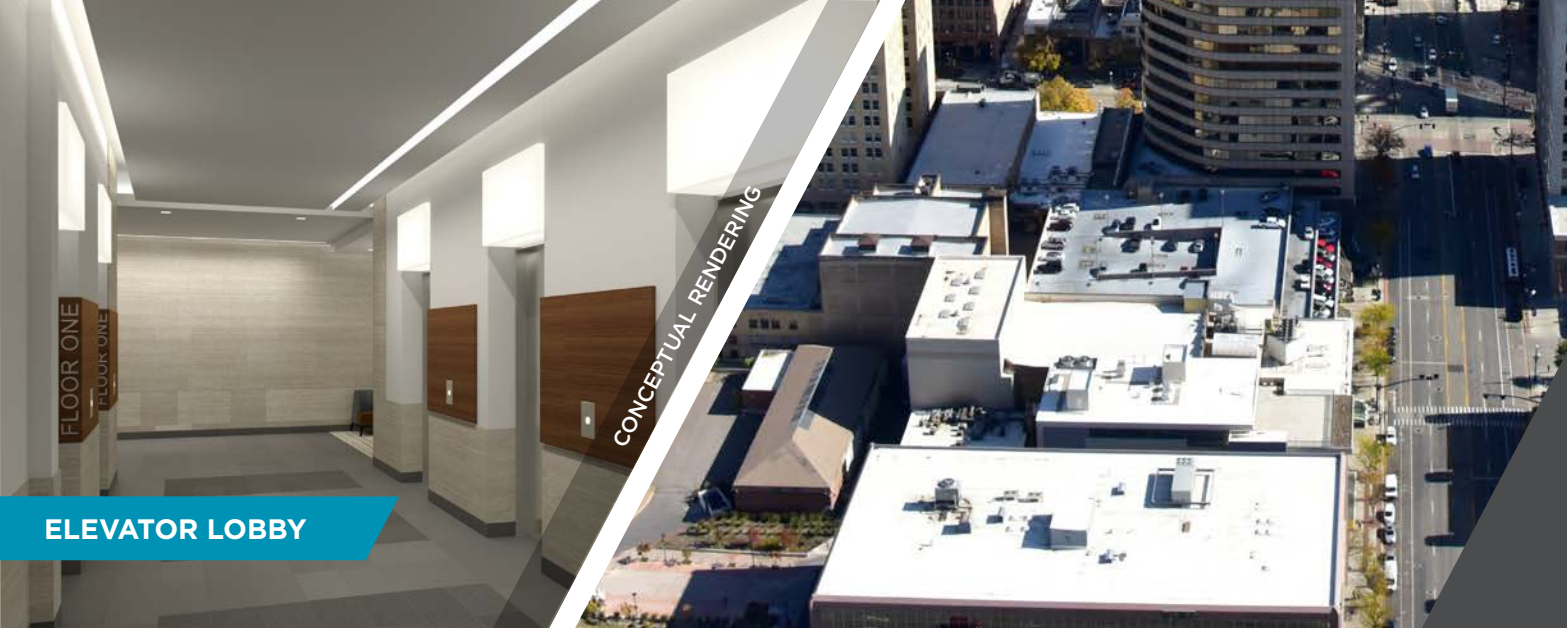
FITNESS CENTER

CONCEPTUAL RENDERING



MAIN FLOOR CORRIDOR

CONCEPTUAL RENDERING



ELEVATOR LOBBY

CONCEPTUAL RENDERING



SECOND FLOOR



Floor 2

SUITE	SIZE	AVAILABILITY
250	2,825 RSF	Immediately
290	2,333 RSF	Immediately

2nd Floor Building Common Conference Room



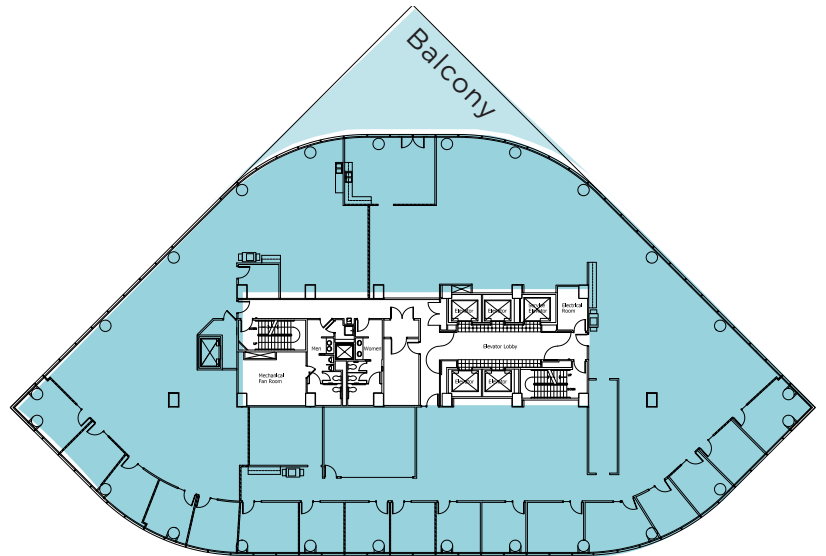
FOURTH FLOOR



Floor 4

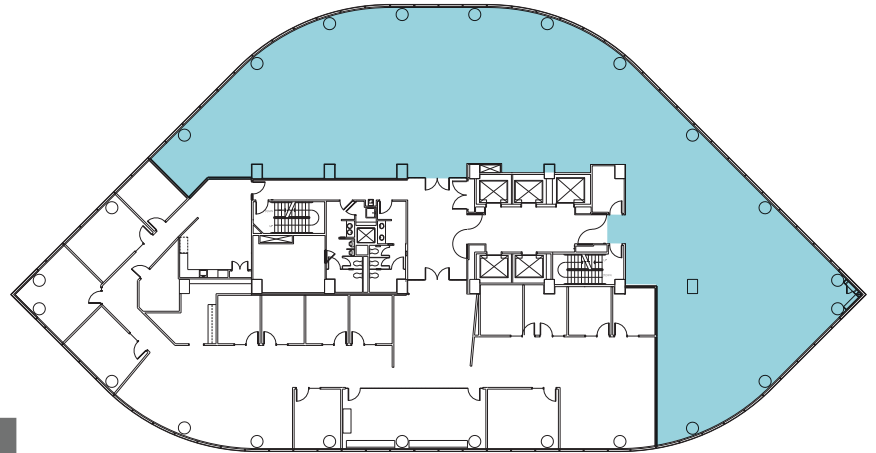
SUITE	SIZE	AVAILABILITY
400	16,587 RSF	12/1/2017

4th Floor Balcony



**FIFTH FLOOR**

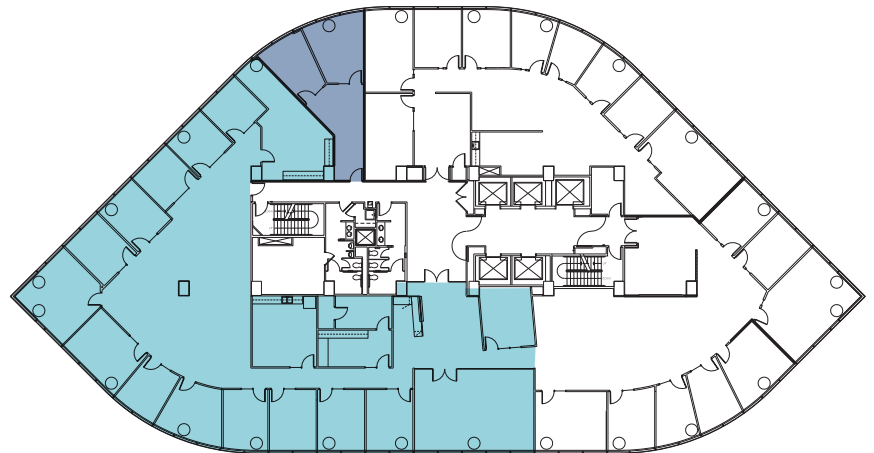
# Floor 5



SUITE	SIZE	AVAILABILITY
525	8,457 RSF	Immediately

**SEVENTH FLOOR**

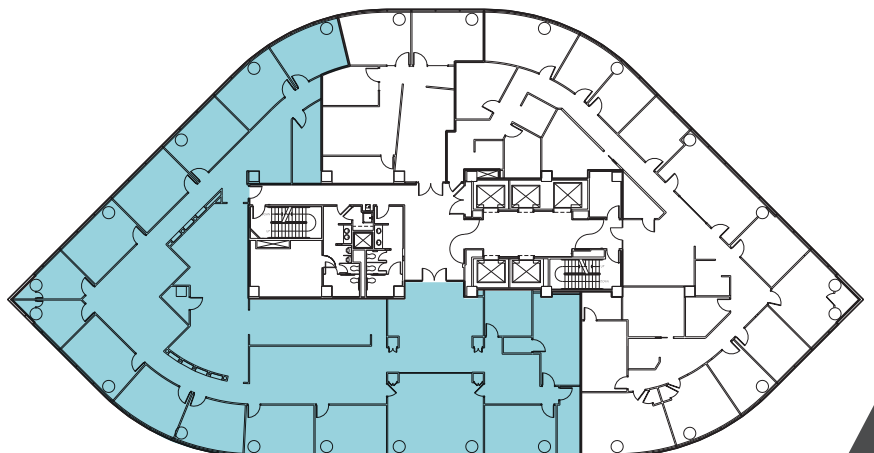
# Floor 7



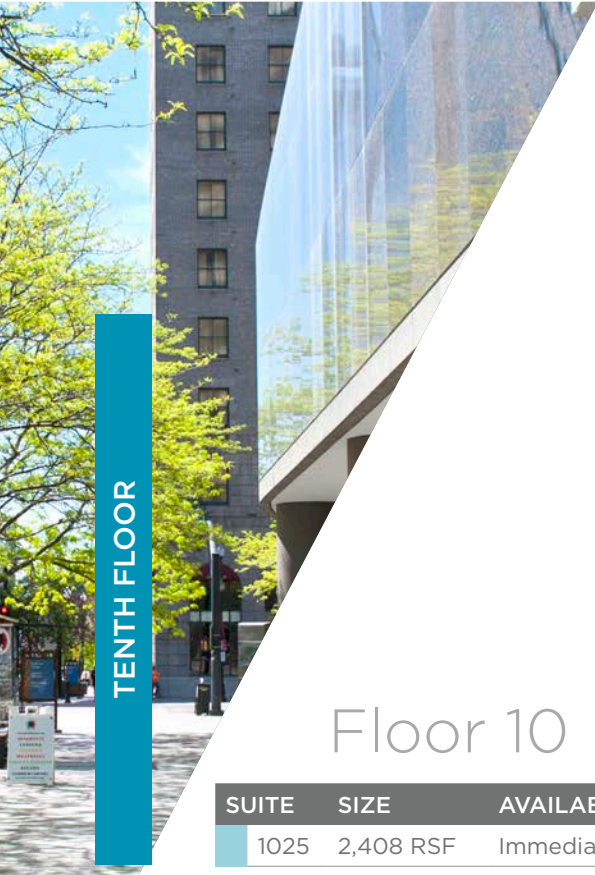
SUITE	SIZE	AVAILABILITY
700	7,795 RSF	Immediately
775	755 RSF	11/1/2017

**EIGHTH FLOOR**

# Floor 8



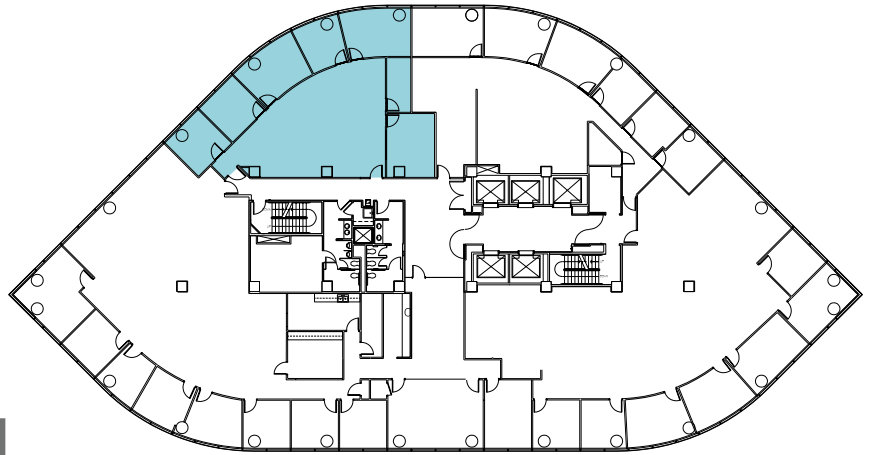
SUITE	SIZE	AVAILABILITY
800	8,743 RSF	Immediately



TENTH FLOOR

## Floor 10

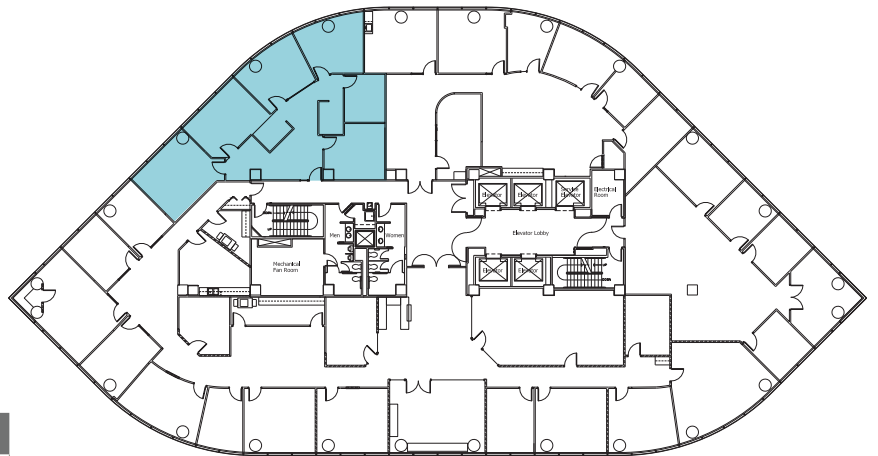
SUITE	SIZE	AVAILABILITY
1025	2,408 RSF	Immediately

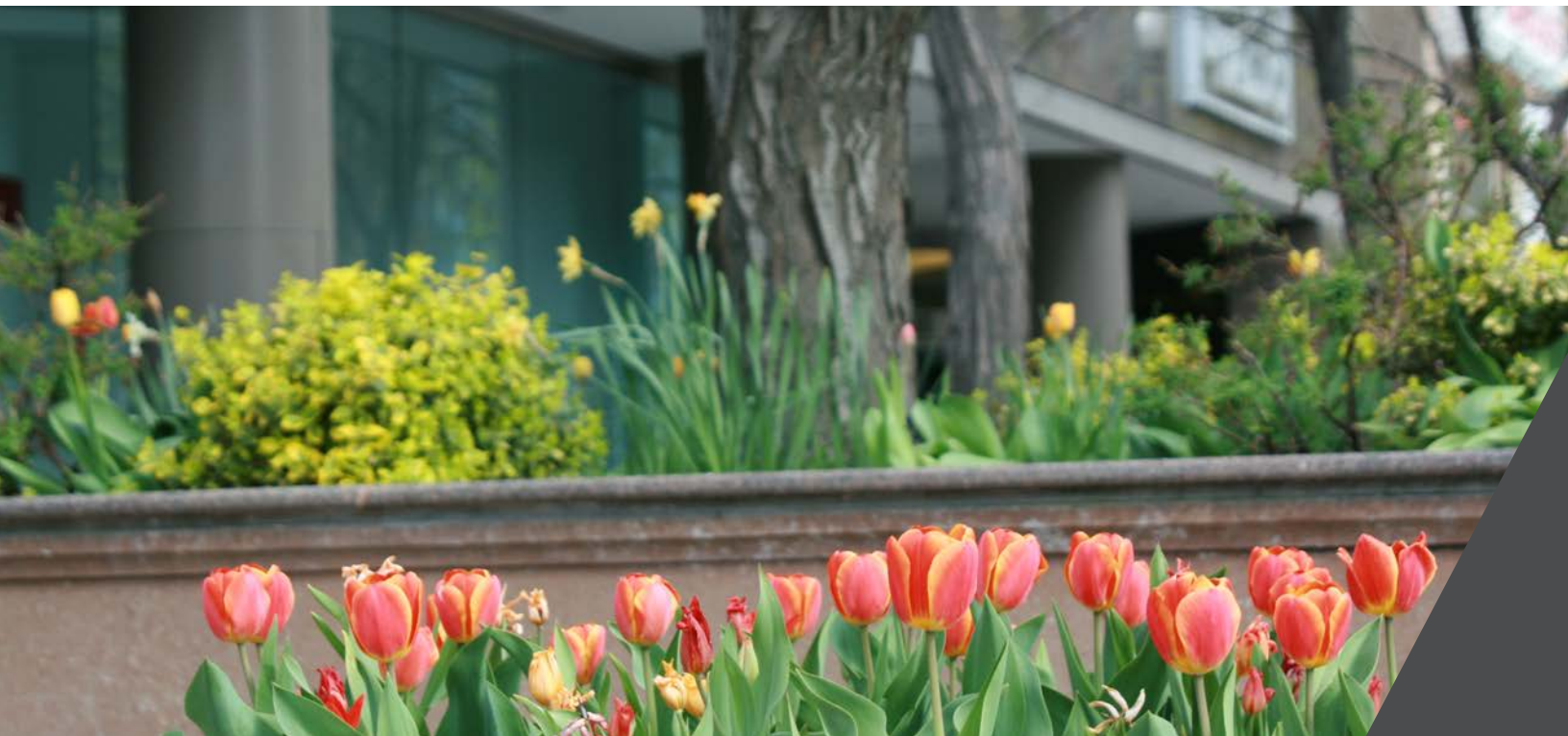
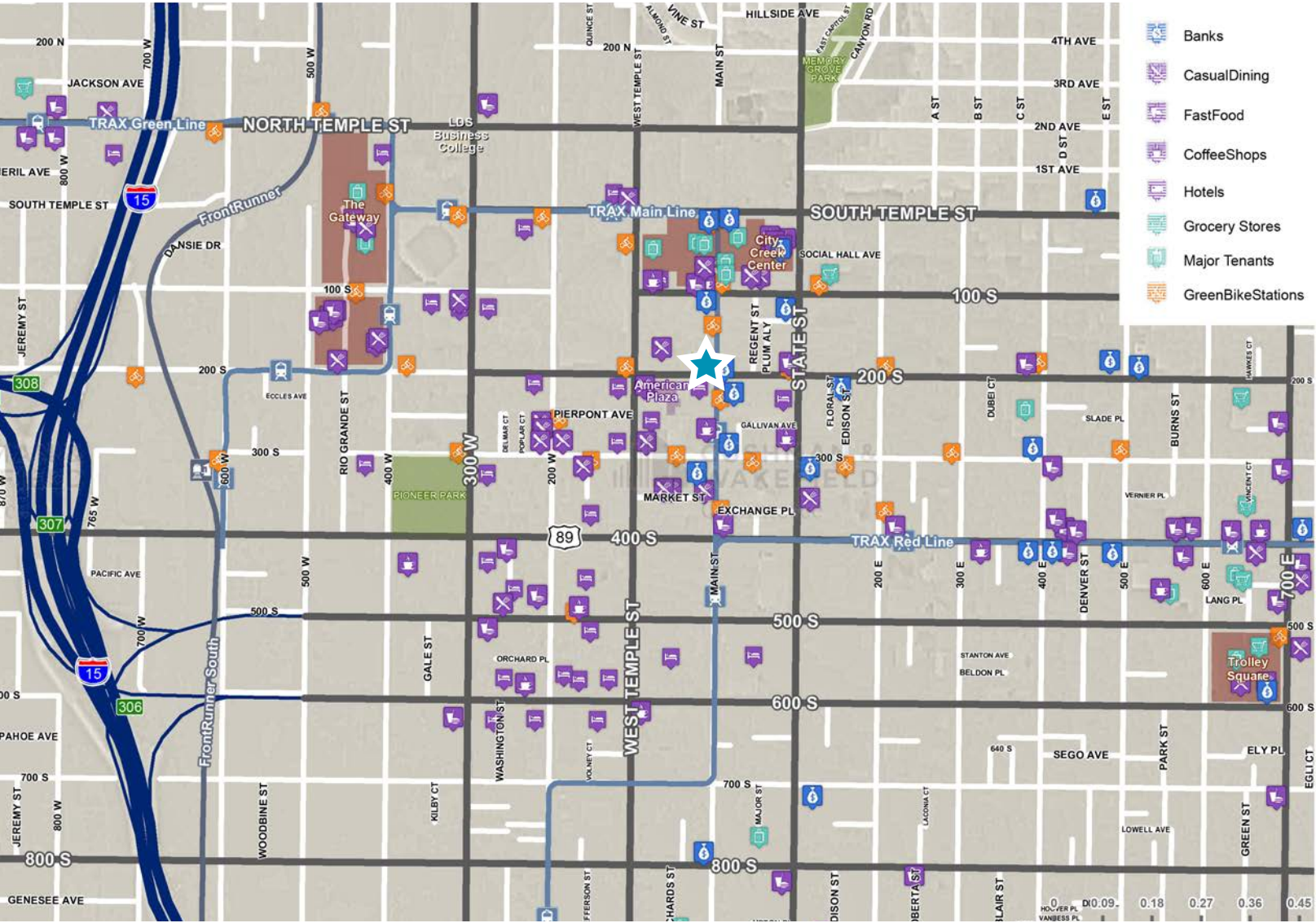


ELEVENTH FLOOR

## Floor 11

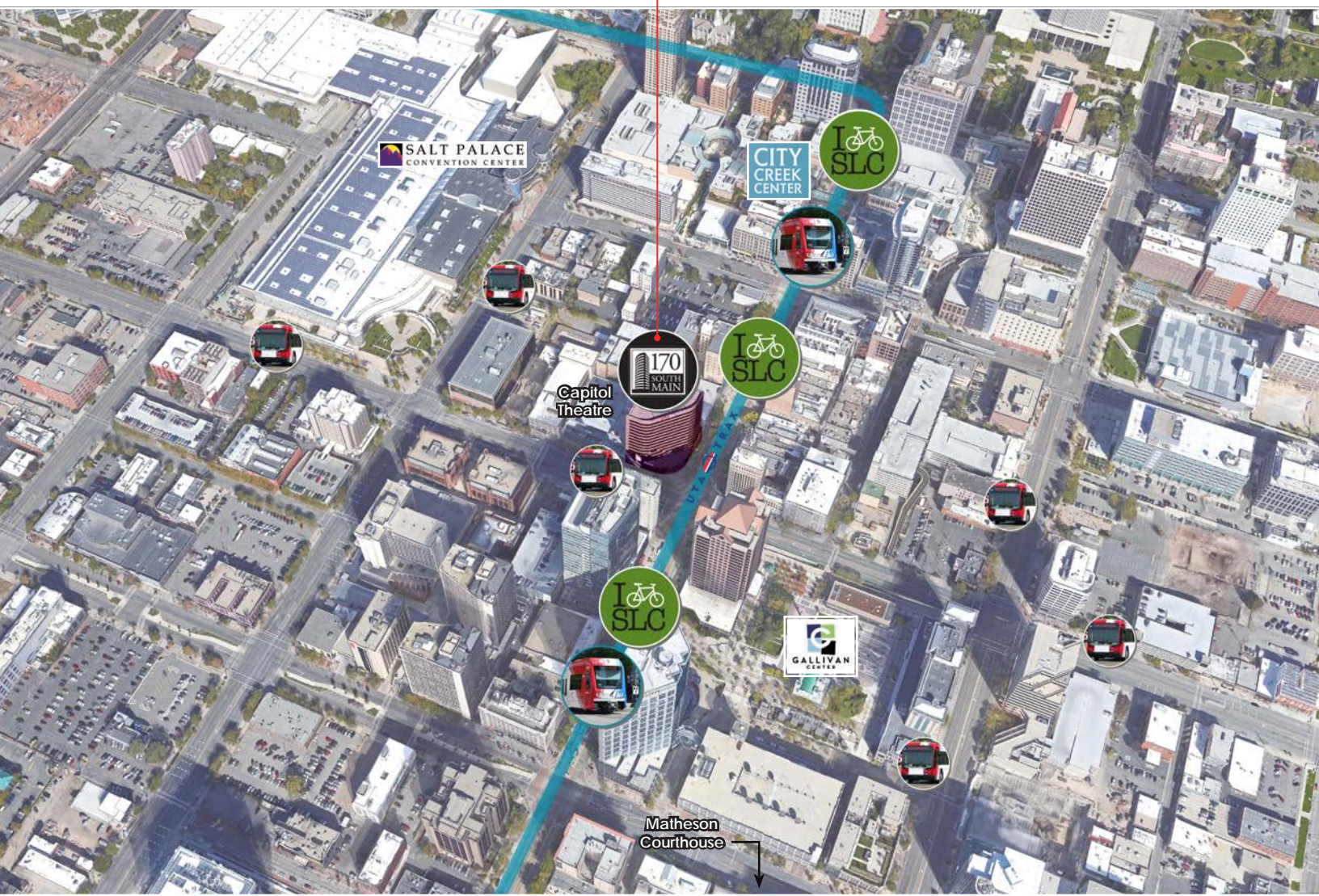
SUITE	SIZE	AVAILABILITY
1125	2,190 RSF	Immediately





ONE SEVENTY  SOUTH MAIN

170 South Main Street  
Salt Lake City • Utah



MARKETED BY:

Mike Richmond **801.303.5434**  
mike.richmond@cushwake.com

Dana Baird, CCIM **801.303.5526**  
dana.baird@cushwake.com



170 South Main Street, Suite 1600 • Salt Lake City, Utah 84111  
Tel 801-322-2000 Fax 801-322-2040 • [cushmanwakefield.com](http://cushmanwakefield.com)

©2017, Commerce Real Estate Solutions. Disclaimer: The above information is given with the obligation that all negotiations relating to the purchase, renting, or leasing of the property described above shall be conducted through **Commerce Real Estate Solutions**. No warranty or representation, express or implied, is made as to the accuracy of the information contained herein, and same is submitted subject to errors, omissions, change of price, rental or other encumbrances, withdrawal without notice, and to any special listing conditions imposed by the seller. Prospective buyers should conduct their own due diligence. Some aerial photography by DigitalGlobe or Aerials Express.  
path: G:\1 - Projects\Richmond, Mike\1 - Flyers\170 South Main\170 South Main Flyers