

FOR LEASE

Eastlake Office / Flex Building

2371 Fenton Street, Chula Vista, CA 91914

Voit

REAL ESTATE SERVICES



Real People. Real Solutions.®

FOR LEASE

Eastlake Office / Flex Building

2371 Fenton Street, Chula Vista, CA 91914

Building Features

- +/- 38,368 SF Office/Flex Building Consisting of +/- 27,456 SF of 1st Floor Space and +/- 9,962 SF of Built-Out Mezzanine Space and +/- 950 SF of Basement Space.
- Newer Building Built in 2000 (Concrete Tilt-up Construction). Renovated in 2007 to Multi-Tenant Office Suites.
- Assessor's Parcel #595-231-34.
- Elevator Served (Elevator Installed 2008).
- Sprinklered.
- State of the Art Security Features.
- +/- 4,605 SF Currently Occupied by Owner With Built Out Offices that Include a Luxurious Suite with Upscale Amenities and Features. (Current owner can lease this space or vacate dependent upon buyer's needs.)
- 117 Parking Spaces Including 5 Handicapped Parking Spaces.
- Eastlake Master Planned Community
- Easy Access Using Hwy-125 Connecting to I-805, Hwy-54 to the Border of Mexico.
- Restaurants and Retail Within Walking Distance
- Near Target/Lowe's Center, Kohls' Center and the U.S. Post Office
- Enterprise Zone Incentives

Tracy Clark
Senior Vice President
Lic. # 00641800
(858) 458-3339
tclark@voitco.com

Kimberly C. Clark, J.D.
Associate
Lic. # 01439305
858.458.3343
kclark@voitco.com

Voit
REAL ESTATE SERVICES

4747 Executive Drive, Suite 800, San Diego, CA 92121 • 858.453.0505 • 858.453.1981 Fax • Lic #01333376 | www.voitco.com

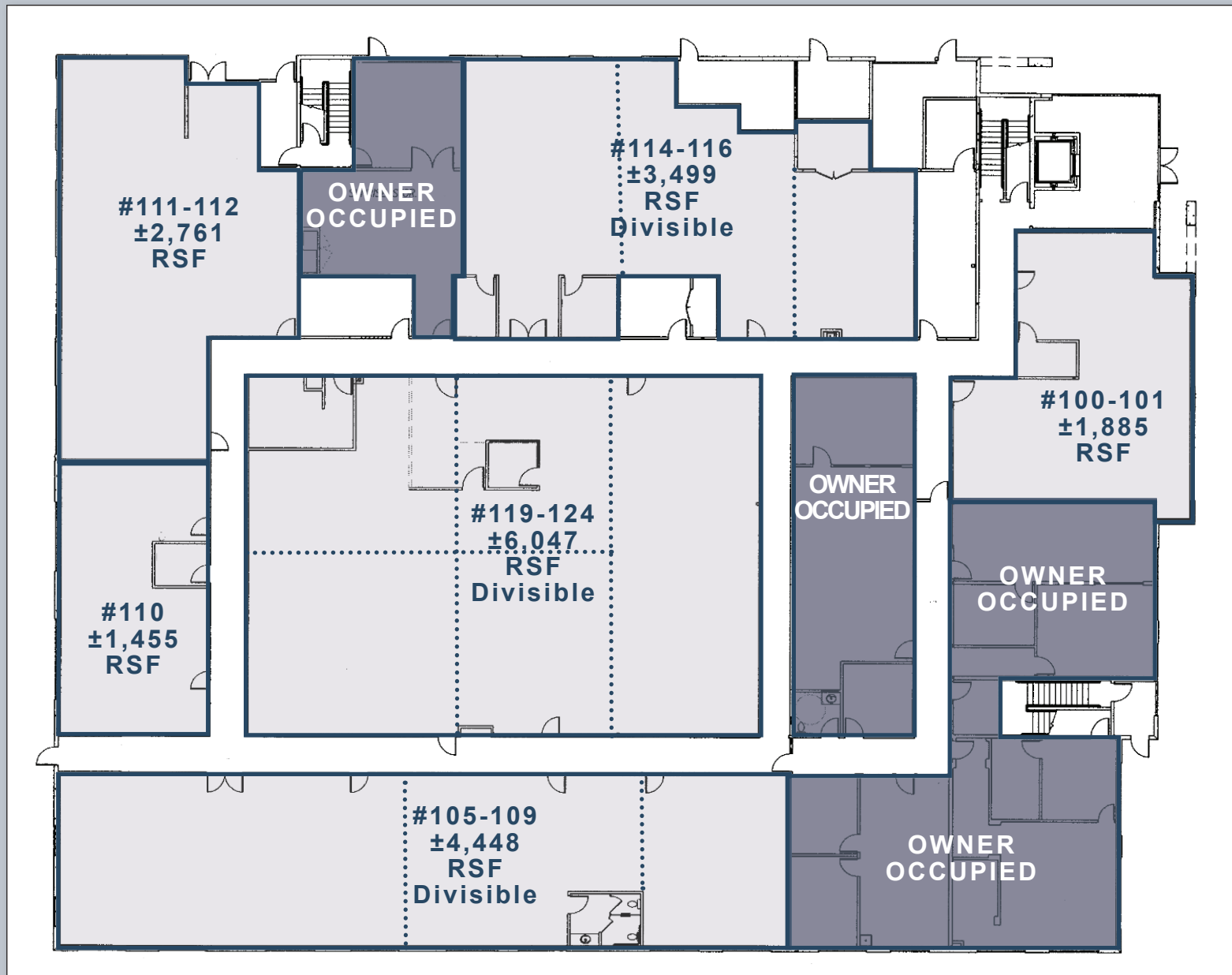
FOR LEASE

Eastlake Office / Flex Building

2371 Fenton Street, Chula Vista, CA 91914

Voit

REAL ESTATE SERVICES



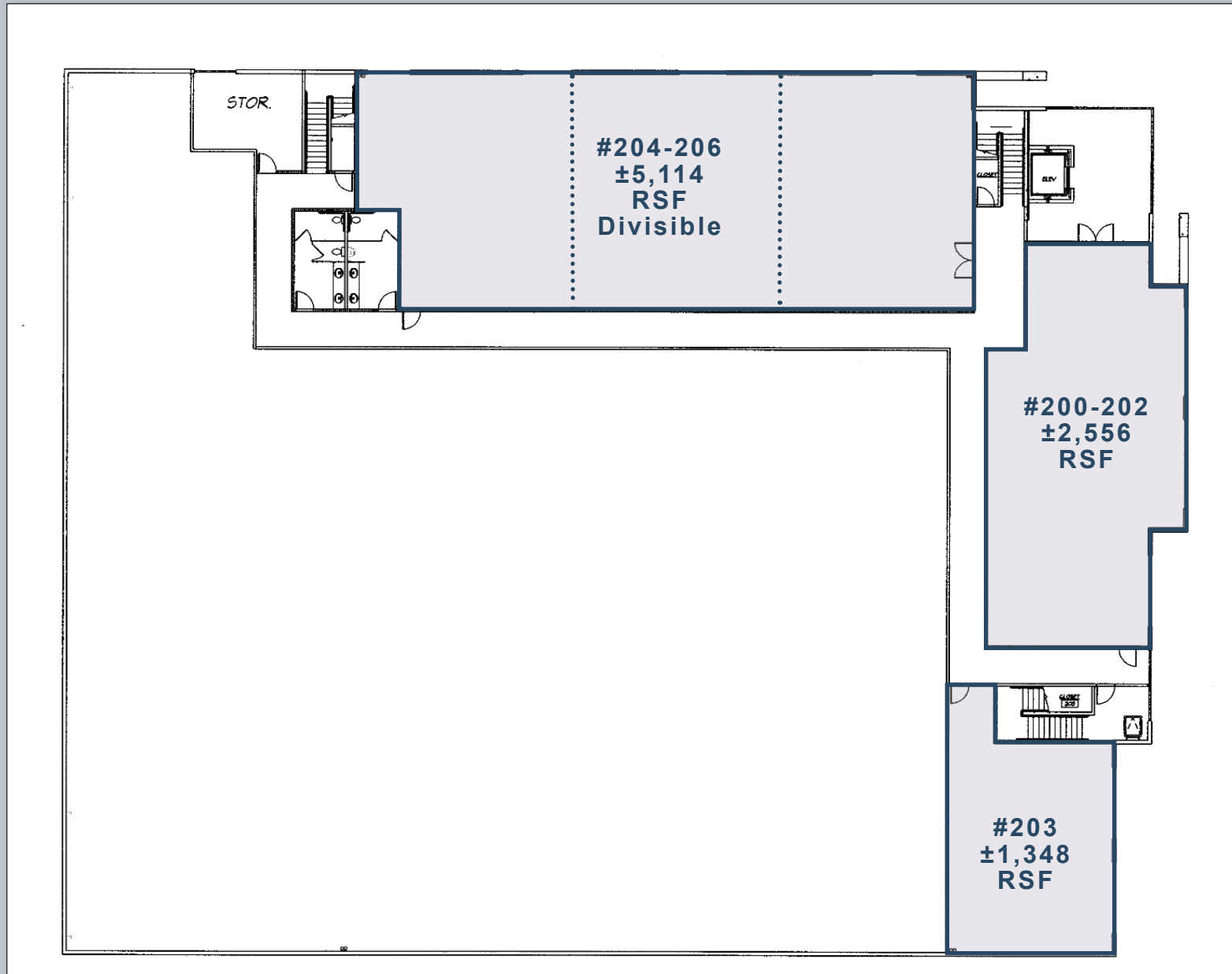
FOR LEASE

Eastlake Office / Flex Building

2371 Fenton Street, Chula Vista, CA 91914

Voit

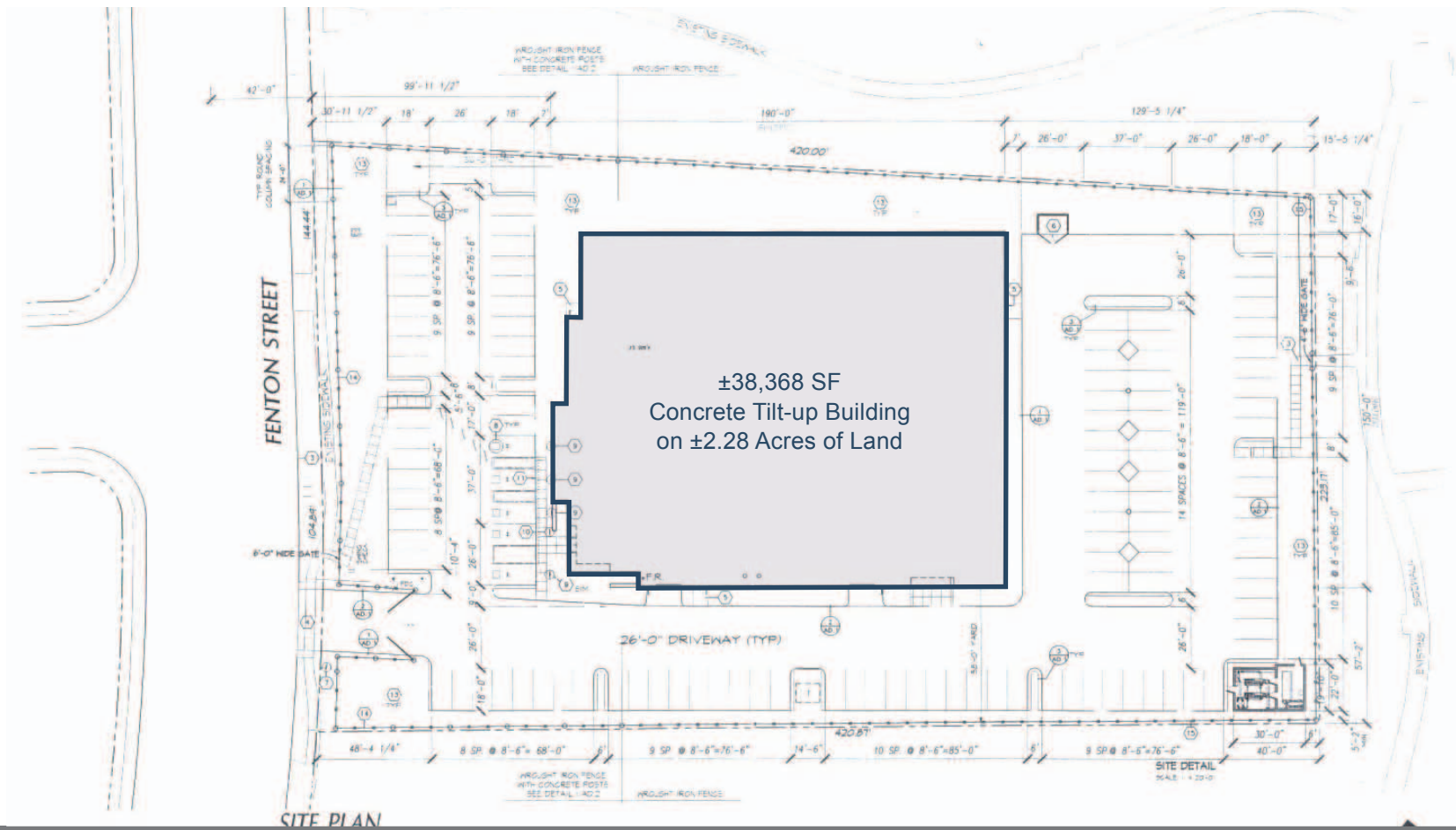
REAL ESTATE SERVICES



FOR LEASE

Eastlake Office / Flex Building

2371 Fenton Street, Chula Vista, CA 91914



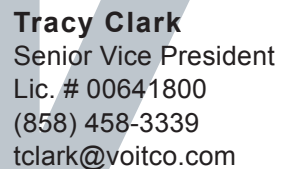
Tracy Clark
Senior Vice President
Lic. # 00641800
(858) 458-3339
tclark@voitco.com

Kimberly C. Clark, J.D.
Associate
Lic. # 01439305
858.458.3343
kclark@voitco.com

Voit
REAL ESTATE SERVICES

4747 Executive Drive, Suite 800, San Diego, CA 92121 • 858.453.0505 • 858.453.1981 Fax • Lic #01333376 | www.voitco.com

Eastlake Office / Flex Building
2371 Fenton Street, Chula Vista, CA 91914



Kimberly C. Clark, J.D.
Associate
Lic. # 01439305
858.458.3343
kclark@voitco.com

Voit
REAL ESTATE SERVICES

4747 Executive Drive, Suite 800, San Diego, CA 92121 • 858.453.0505 • 858.453.1981 Fax • Lic #01333376 | www.voitco.com

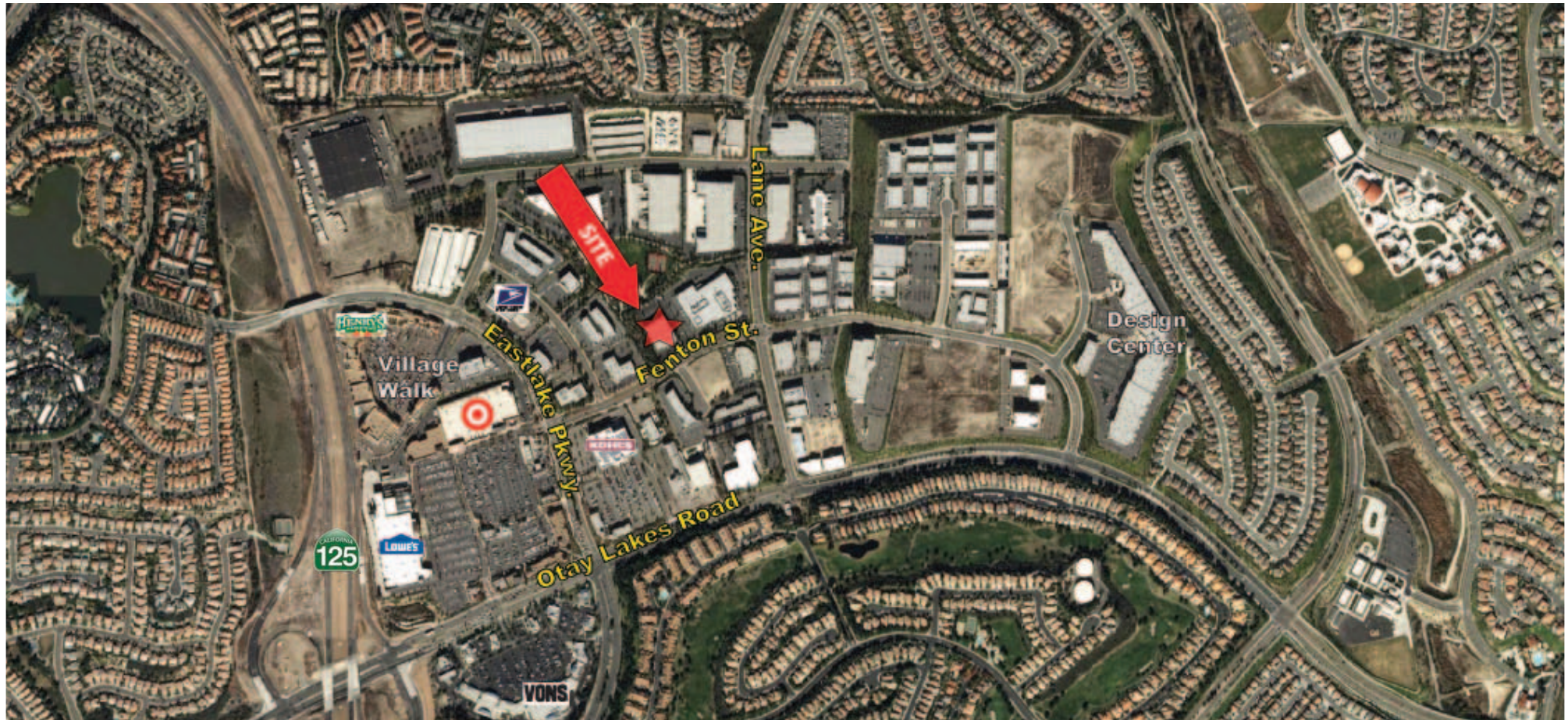
The information contained herein has been obtained from sources we deem reliable. While we have no reason to doubt its accuracy, we do not guarantee it. ©2012 VoIt Real Estate Services, Inc. All Rights Reserved. Real People. Real Solutions.™ is a trademark of VoIt Real Estate Services.



FOR LEASE

Eastlake Office / Flex Building

2371 Fenton Street, Chula Vista, CA 91914



Tracy Clark
Senior Vice President
Lic. # 00641800
(858) 458-3339
tclark@voitco.com

Kimberly C. Clark, J.D.
Associate
Lic. # 01439305
858.458.3343
kclark@voitco.com

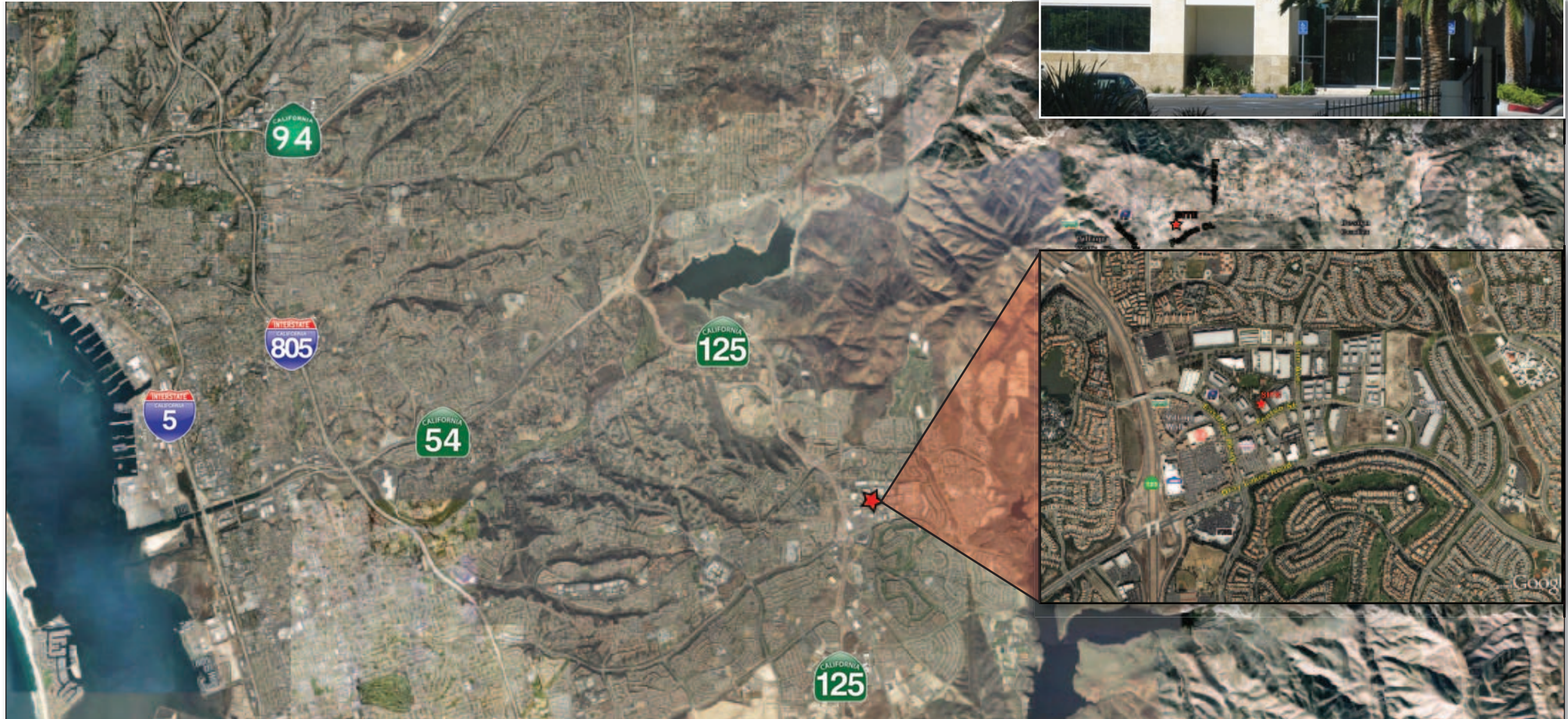
Voit
REAL ESTATE SERVICES

4747 Executive Drive, Suite 800, San Diego, CA 92121 • 858.453.0505 • 858.453.1981 Fax • Lic #01333376 | www.voitco.com

FOR LEASE

Eastlake Office / Flex Building

2371 Fenton Street, Chula Vista, CA 91914



Tracy Clark
Senior Vice President
Lic. # 00641800
(858) 458-3339
tclark@voitco.com

Kimberly C. Clark, J.D.
Associate
Lic. # 01439305
858.458.3343
kclark@voitco.com

Voit
REAL ESTATE SERVICES

4747 Executive Drive, Suite 800, San Diego, CA 92121 • 858.453.0505 • 858.453.1981 Fax • Lic #01333376 | www.voitco.com

The information contained herein has been obtained from sources we deem reliable. While we have no reason to doubt its accuracy, we do not guarantee it. ©2012 Voit Real Estate Services, Inc. All Rights Reserved. Real People. Real Solutions.™ is a trademark of Voit Real Estate Services.

